

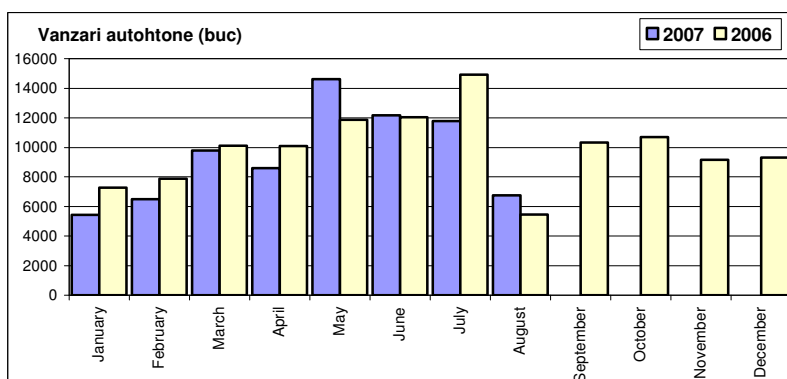
Top vânzări marci automobile - August 2007

	Autoturisme				Vehicule comerciale (inclusiv minibusuri și autobuze)				Total			
	unitati		cota piata		< 3.5 t		> 3.5 t		unitati		cota piata	
	Aug-08	Cumul-08	Aug-08	Cumul-08	Aug-08	Cumul-08	Aug-08	Cumul-08	Aug-08	Cumul-08	Aug-08	Cumul-08
DACIA	5 604	63 641	20.6%	31.1%	571	5 035	0	0	6 175	68 676	20.1%	29.0%
RENAULT	2 712	19 893	10.0%	9.7%	290	1 833	0	0	3 002	21 726	9.8%	9.2%
VW	2 121	14 861	7.8%	7.3%	183	1 601	18	119	2 322	16 581	7.6%	7.0%
OPEL	2 212	11 387	8.1%	5.6%	22	187	0	0	2 234	11 574	7.3%	4.9%
PEUGEOT	1 856	9 891	6.8%	4.8%	349	1 951	0	0	2 205	11 842	7.2%	5.0%
SKODA	1 934	15 512	7.1%	7.6%	9	12	0	0	1 943	15 524	6.3%	6.6%
FORD	1 549	9 668	5.7%	4.7%	296	2 979	0	1	1 845	12 648	6.0%	5.3%
CHEVROLET	1 548	8 674	5.7%	4.2%	0	0	0	0	1 548	8 674	5.0%	3.7%
FIAT	1 001	5 977	3.7%	2.9%	451	3 448	0	0	1 452	9 425	4.7%	4.0%
TOYOTA	1 112	5 994	4.1%	2.9%	72	505	0	0	1 184	6 499	3.9%	2.7%
DAEWOO	1 139	11 980	4.2%	5.8%	0	38	0	0	1 139	12 018	3.7%	5.1%
HYUNDAI	1 107	7 736	4.1%	3.8%	0	22	0	0	1 107	7 758	3.6%	3.3%
MERCEDES	265	1 608	1.0%	0.8%	125	1 038	229	1 600	619	4 246	2.0%	1.8%
SEAT	592	3 259	2.2%	1.6%	0	0	0	0	592	3 259	1.9%	1.4%
CITROEN	394	2 629	1.4%	1.3%	106	735	0	0	500	3 364	1.6%	1.4%
MITSUBISHI	292	1 571	1.1%	0.8%	31	518	7	37	330	2 126	1.1%	0.9%
NISSAN	181	1 249	0.7%	0.6%	91	481	0	0	272	1 730	0.9%	0.7%
AUDI	271	1 834	1.0%	0.9%	0	0	0	0	271	1 834	0.9%	0.8%
KIA	248	1 316	0.9%	0.6%	13	172	0	0	261	1 488	0.8%	0.6%
HONDA	236	1 163	0.9%	0.6%	0	0	0	0	236	1 163	0.8%	0.5%
Rest	807	5 023	3.0%	2.5%	16	1 951	659	7 679	1 482	14 653	4.8%	6.2%
TOTAL	27 181	204 866	100.0%	100.0%	2 625	22 506	913	9 436	30 719	236 808	100.0%	100.0%

Vanzari autoturisme autohtone

Luna/An	2007	2006	Variatie
January	5 429	7 260	-25.2%
February	6 494	7 874	-17.5%
March	9 793	10 119	-3.2%
April	8 591	10 097	-14.9%
May	14 606	11 874	23.0%
June	12 183	12 041	1.2%
July	11 782	14 910	-21.0%
August	6 743	5 444	23.9%
September	-	10 341	-
October	-	10 694	-
November	-	9 138	-
December	-	9 320	-
Total	75 621	79 619	-5.0%

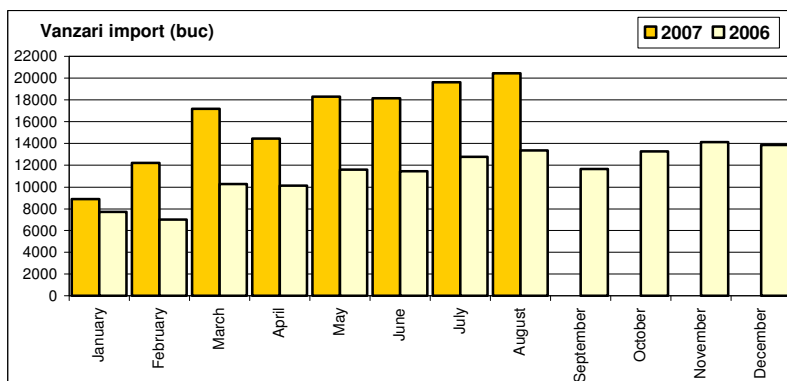
119 112



Vanzari autoturisme import

Luna/An	2007	2006	Variatie
January	8 897	7 713	15.4%
February	12 210	7 013	74.1%
March	17 176	10 281	67.1%
April	14 453	10 142	42.5%
May	18 306	11 595	57.9%
June	18 154	11 447	58.6%
July	19 611	12 788	53.4%
August	20 438	13 373	52.8%
September	-	11 666	-
October	-	13 263	-
November	-	14 114	-
December	-	13 857	-
Total	129 245	84 352	53.2%

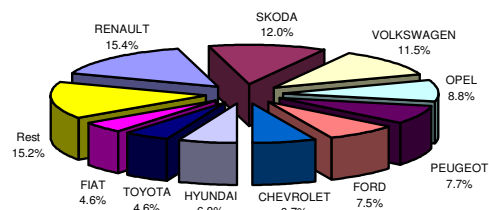
137 252



Top vanzari autoturisme import - marci

MARCA	August		Variație Iulie		8 luni 2007		Variație 2006	
	poziție	unitati	poziție	procent	poziție	unitati	poziție	procent
RENAULT	1	2712	1	↘ -18.8%	1	19893	1	↗ 43.4%
SKODA	4	1934	3	↘ -13.3%	2	15512	2	↗ 21.3%
VOLKSWAGEN	3	2121	2	↘ -9.7%	3	14861	3	↗ 57.5%
OPEL	2	2212	6	↗ 47.9%	4	11387	5	↗ 79.2%
PEUGEOT	5	1856	5	↗ 19.1%	5	9891	4	↗ 43.2%
FORD	6	1549	4	↘ -12.3%	6	9668	6	↗ 59.4%
CHEVROLET	7	1548	8	↗ 53.1%	7	8674	8	↗ 111.0%
HYUNDAI	9	1107	7	↘ -9.5%	8	7736	7	↗ 66.5%
TOYOTA	8	1112	10	↗ 39.2%	9	5994	10	↗ 85.3%
FIAT	10	1001	9	↗ 9.6%	10	5977	9	↗ 59.3%
Rest		3286		12.4%		19652		49.0%
TOTAL		20438		4.2%		129245		53.2%

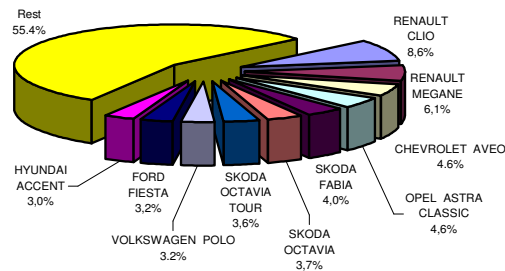
Autoturisme import - marci - 8 luni 2007



Top vanzari autoturisme import - modele

MODEL	August		Variație Iulie		8 luni 2007		Variație 2006	
	poziție	unitati	poziție	procent	poziție	unitati	poziție	procent
RENAULT CLIO	1	1361	1	↘ -19.6%	1	11127	1	↗ 29.0%
RENAULT MEGANE	2	1214	2	↘ -18.6%	2	7869	2	↗ 77.8%
CHEVROLET AVEO	4	1027	8	↗ 43.2%	3	5959	12	↗ 186.1%
OPEL ASTRA CLASSIC	3	1200	3	↗ 38.2%	4	5903	7	↗ 78.6%
SKODA FABIA	7	620	7	↘ -15.3%	5	5143	4	↗ 18.9%
SKODA OCTAVIA	9	550	4	↘ -28.6%	6	4730	5	↗ 32.5%
SKODA OCTAVIA TOUR	6	641	12	↗ 7.0%	7	4672	3	↗ 6.3%
VOLKSWAGEN POLO	17	427	6	↘ -42.5%	8	4177	6	↗ 23.7%
FORD FIESTA	8	589	9	↘ -5.3%	9	4152	11	↗ 93.0%
HYUNDAI ACCENT	11	482	16	↗ 47.4%	10	3927	10	↗ 58.5%
Rest		12327		11.6%		71586		56.9%
TOTAL		20438		4.2%		129245		53.2%

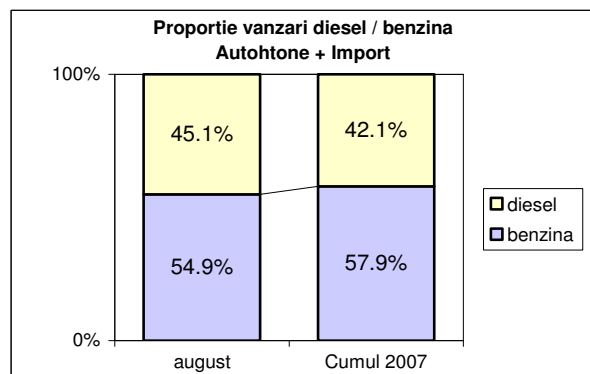
Autoturisme import - modele - 8 luni 2007



Vanzari autoturisme DIESEL

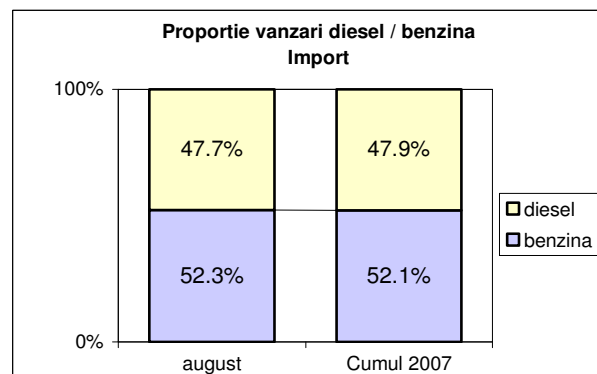
Autohtone + Import

	benzina		diesel		total
august	14 929	54.9%	12252	45.1%	27 181
Cumul 2007	118 634	57.9%	86232	42.1%	204 866



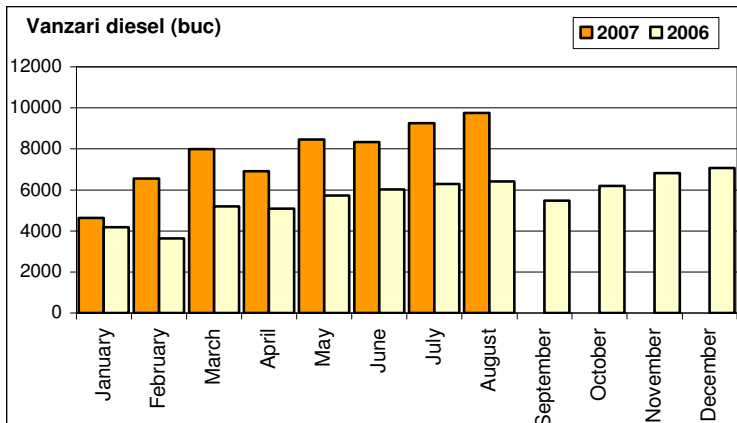
Import

	benzina		diesel		total
august	10 686	52.3%	9752	47.7%	20 438
Cumul 2007	67 329	52.1%	61916	47.9%	129 245



Vanzari autoturisme DIESEL - import

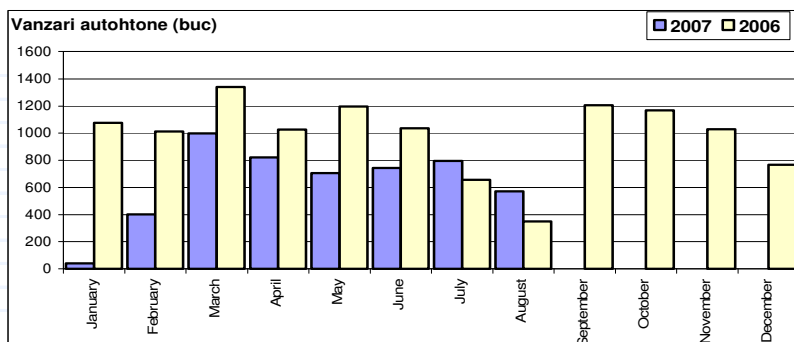
Luna/An	2007	pondere diesel	2006	pondere diesel	Variatie 07/06
January	4 634	52.1%	4 185	54.3%	10.7%
February	6 556	53.7%	3 629	51.7%	80.7%
March	7 992	46.5%	5 210	50.7%	53.4%
April	6 925	47.9%	5 095	50.2%	35.9%
May	8 469	46.3%	5 730	49.4%	47.8%
June	8 338	45.9%	6 024	52.6%	38.4%
July	9 250	47.2%	6 293	49.2%	47.0%
August	9 752	47.7%	6 416	48.0%	52.0%
September	-	-	5 480	47.0%	-
October	-	-	6 196	46.7%	-
November	-	-	6 825	48.4%	-
December	-	-	7 072	51.0%	-
Total	61 916	47.9%	42 582	50.5%	45.4%



Vanzari comerciale usoare + minibus autohtone

Luna/An	2007	2006	Variatie
January	40	1 074	-96.3%
February	401	1 012	-60.4%
March	998	1 339	-25.5%
April	821	1 026	-20.0%
May	705	1 194	-41.0%
June	744	1 035	-28.1%
July	793	656	20.9%
August	571	348	64.1%
September	-	1 205	-
October	-	1 167	-
November	-	1 029	-
December	-	766	-
Total	5 073	7 684	-34.0%

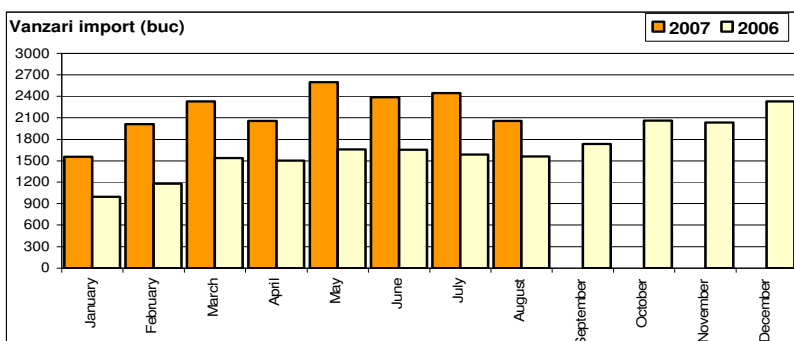
11 851



Vanzari comerciale usoare + minibus import

Luna/An	2007	2006	Variatie
January	1 553	999	55.5%
February	2 011	1 178	70.7%
March	2 331	1 538	51.6%
April	2 054	1 503	36.7%
May	2 597	1 659	56.5%
June	2 387	1 656	44.1%
July	2 446	1 585	54.3%
August	2 054	1 558	31.8%
September	-	1 733	-
October	-	2 062	-
November	-	2 033	-
December	-	2 333	-
Total	17 433	11 676	49.3%

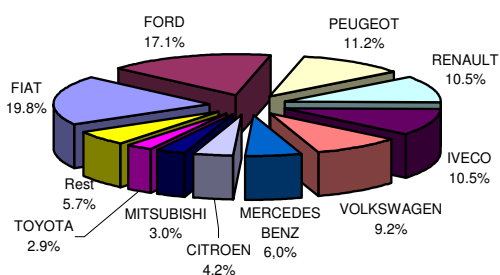
19 837



Vanzari comerciale <3.5t si minibus import - marci

MARCA	August		Variație Iulie		8 luni 2007		Variație 2006	
	poziție	unitati	poziție	procent	poziție	unitati	poziție	procent
FIAT	1	451	1	↘ -27.4%	1	3448	2	↗ 87.4%
FORD	3	296	3	↗ 11.3%	2	2979	1	↗ 48.1%
PEUGEOT	2	349	5	↘ 36.9%	3	1951	3	↗ 9.9%
RENAULT	4	290	2	↘ -11.3%	4	1833	4	↗ 28.0%
IVECO	14	6	4	↘ -97.7%	5	1829	5	↗ 116.2%
VOLKSWAGEN	5	183	6	↘ -10.3%	6	1601	5	↗ 38.5%
MERCEDES BENZ	6	125	7	↗ 2.5%	7	1038	7	↗ 79.0%
CITROEN	7	106	8	↗ 7.1%	8	735	8	↗ 64.8%
MITSUBISHI	10	31	11	↘ -18.4%	9	518	12	↗ 136.5%
TOYOTA	9	72	9	↘ -22.6%	10	505	11	↗ 76.6%
Rest		145		-8.2%		996		-8.0%
TOTAL		2054		-16.0%		17433		49.3%

Vanzari com <3.5t si minibus import - marci - 8 luni 2007



Vanzari comerciale <3.5t si minibus import - modele

MODEL	August		Variație Iulie		8 luni 2007		Variație 2006	
	poziție	unitati	poziție	procent	poziție	unitati	poziție	procent
FORD TRANSIT	2	225	4	↗ 7.1%	1	2549	1	↗ 59.3%
IVECO DAILY	50	0	3	-	2	1727	4	↗ 104.1%
FIAT DUCATO	3	210	1	↘ -40.0%	3	1670	5	↗ 99.8%
FIAT DOBLO CARGO	4	170	2	↘ -32.5%	4	1594	3	↗ 61.3%
PEUGEOT BOXER	1	253	6	↘ 42.9%	5	1337	2	↗ 17.8%
RENAULT MASTER	5	168	5	↘ -8.2%	6	1065	6	↗ 56.8%
MERCEDES BENZ SPRIN	6	92	9	↗ 9.5%	7	790	9	↗ 84.1%
CITROEN JUMPER	8	88	11	↗ 11.4%	8	562	15	↗ 110.5%
MITSUBISHI L200	18	31	18	↘ -18.4%	9	518	18	↗ 136.5%
TOYOTA HI-LUX	9	70	8	↘ -19.5%	10	491	14	↗ 76.0%
Rest		747		0.3%		5130		16.6%
TOTAL		2054		-16.0%		17433		49.3%

Vanzari com <3.5t si minibus import - modele - 8 luni 2007

