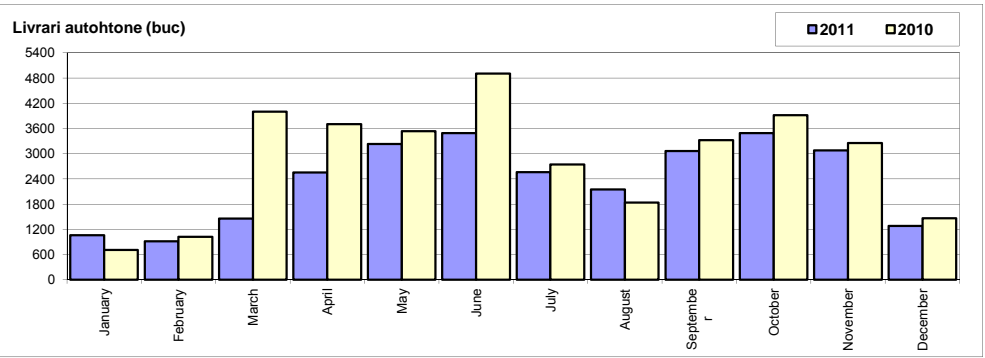


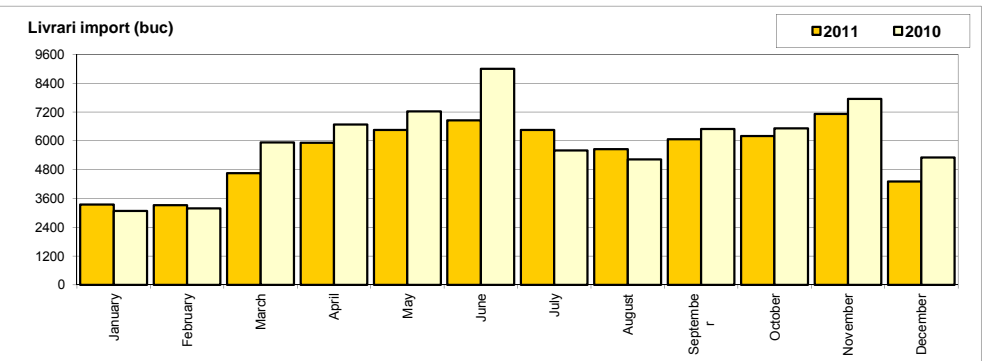
Livrari autoturisme autohtone / Domestic passenger car sales

Luna/An	2011	2010	Variatie
January	1 058	715	48.0%
February	919	1 025	-10.3%
March	1 459	3 995	-63.5%
April	2 554	3 703	-31.0%
May	3 232	3 531	-8.5%
June	3 492	4 901	-28.7%
July	2 564	2 745	-6.6%
August	2 152	1 836	17.2%
September	3 060	3 318	-7.8%
October	3 487	3 915	-10.9%
November	3 076	3 254	-5.5%
December	1 284	1 462	-12.2%
Total	28 337	34 400	-17.6%



Livrari autoturisme import / Imported passenger car sales

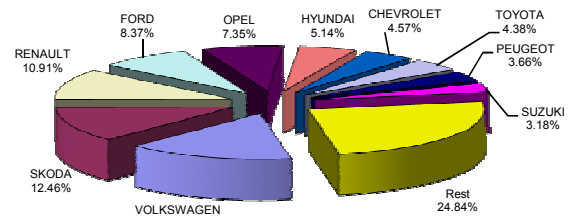
Luna/An	2011	2010	Variatie
January	3 341	3 076	8.6%
February	3 314	3 181	4.2%
March	4 654	5 928	-21.5%
April	5 911	6 673	-11.4%
May	6 448	7 227	-10.8%
June	6 849	8 991	-23.8%
July	6 452	5 591	15.4%
August	5 649	5 217	8.3%
September	6 060	6 493	-6.7%
October	6 191	6 515	-5.0%
November	7 110	7 737	-8.1%
December	4 308	5 299	-18.7%
Total	66 287	71 928	-7.8%



Top livrari autoturisme import - marci / Import passenger car top - by make

MARCA	Decembrie		Noiembrie		2011		Variatie 2010	
	pozitie	unitati	pozitie	procent	pozitie	unitati	pozitie	procent
VOLKSWAGEN	1	662	1	-34.8%	1	10043	1	14.5%
SKODA	2	542	3	-32.8%	2	8260	3	2.2%
RENAULT	4	350	2	-60.7%	3	7229	2	-14.0%
FORD	3	441	5	-29.1%	4	5547	4	-26.6%
OPEL	5	306	7	-21.1%	5	4872	5	-24.5%
HYUNDAI	7	205	6	-48.8%	6	3405	7	-22.5%
CHEVROLET	12	121	8	-54.3%	7	3027	6	-37.8%
TOYOTA	8	177	4	-74.2%	8	2902	9	18.8%
PEUGEOT	16	76	11	-62.2%	9	2425	8	-6.9%
SUZUKI	13	112	14	-25.3%	10	2111	11	-4.6%
Rest		1316		-22.0%		16466		3.7%
TOTAL		4308		-39.4%		66287		-7.8%

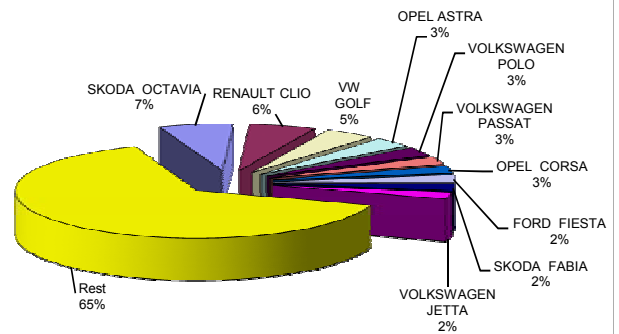
Autoturisme import - marci - 2011



Top livrari autoturisme import - modele / Imported passenger car top - by model

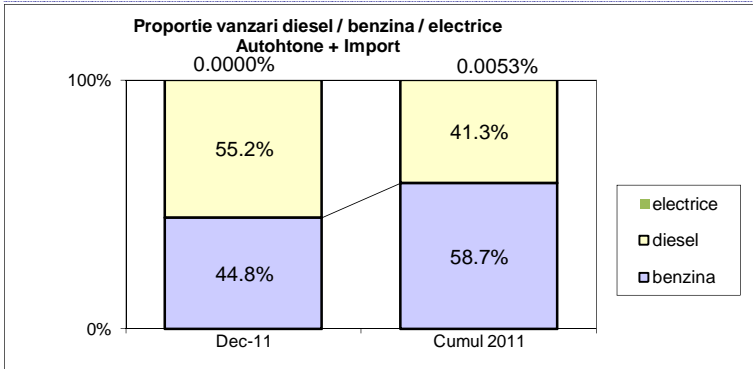
MODEL	Decembrie		Noiembrie		2011		Variatie 2010	
	pozitie	unitati	pozitie	procent	pozitie	unitati	pozitie	procent
SKODA OCTAVIA	1	270	2	-35.9%	1	4318	2	5.1%
RENAULT CLIO	2	170	1	-65.3%	2	3920	1	-21.3%
VOLKSWAGEN GOLF	5	133	5	-50.9%	3	2922	4	-4.5%
OPEL ASTRA	6	131	14	-17.1%	4	2222	3	-35.4%
VOLKSWAGEN POLO	21	59	6	-72.2%	5	1957	9	-2.4%
VOLKSWAGEN PASSAT	7	120	8	-30.6%	6	1750	12	9.4%
OPEL CORSA	15	83	10	-50.6%	7	1655	8	-21.2%
FORD FIESTA	8	116	7	-32.9%	8	1593	5	-47.0%
SKODA FABIA	10	98	16	-26.3%	9	1579	11	-9.5%
VOLKSWAGEN JETTA	3	149	15	6.4%	10	1514	34	177.8%
Rest		2979		-37.2%		42857		-4.9%
TOTAL		4308		-39.4%		66287		-7.8%

Autoturisme import - modele - 2011



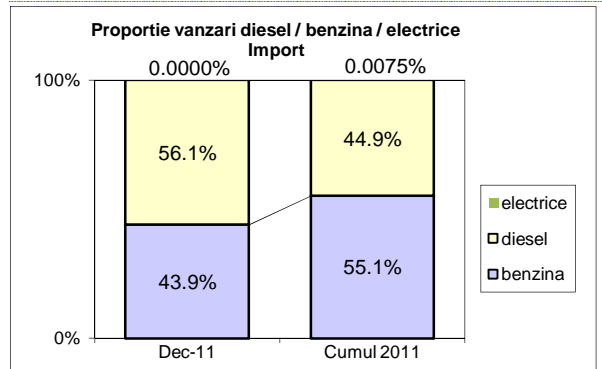
Segmentare dupa tipul de combustibil / Segmentation by type of fuel
Autohtone + Import / Domestic + Imported

	benzina		diesel		electric	total
Dec-11	2 505	44.8%	3087	55.2%	0	5 592
Cumul 2011	55 497	58.7%	39122	41.3%	5	94 624



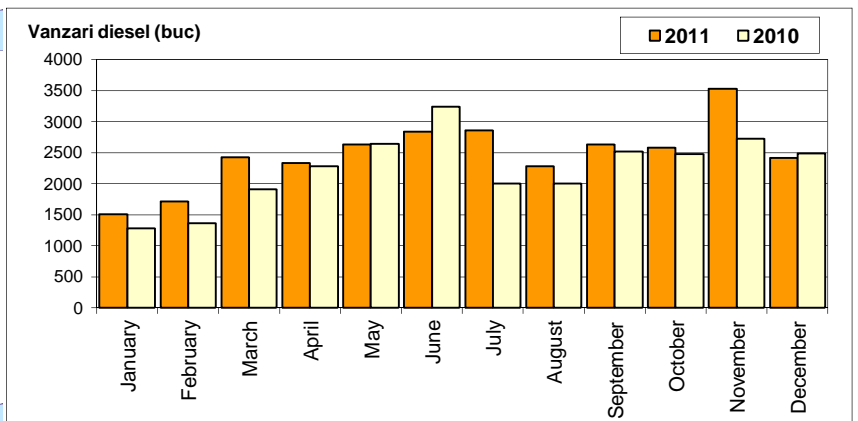
Import

	benzina		diesel		electric	total
Dec-11	1 891	43.9%	2417	56.1%	0	4 308
Cumul 2011	36 545	55.1%	29737	44.9%	5	66 287



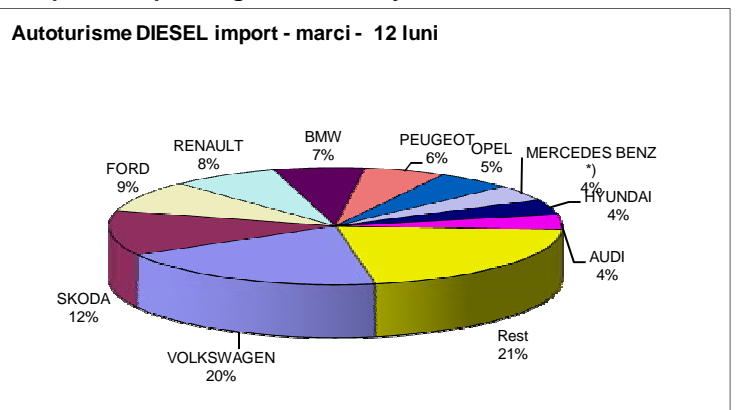
Livrari autoturisme DIESEL - import / Imported PC sales - diesel

Luna/An	2011	pondere diesel	2010	pondere diesel	Variatie 11/10
January	1 508	45.1%	1 285	41.8%	17.4%
February	1 718	52.0%	1 364	42.9%	26.0%
March	2 422	52.1%	1 912	32.3%	26.7%
April	2 330	39.4%	2 278	34.1%	2.3%
May	2 633	40.8%	2 636	35.7%	-0.1%
June	2 835	41.4%	3 235	36.0%	-12.4%
July	2 859	44.3%	2 003	35.8%	42.7%
August	2 279	40.3%	1 997	38.3%	14.1%
September	2 625	43.3%	2 514	38.7%	4.4%
October	2 581	41.7%	2 475	38.0%	4.3%
November	3 530	49.6%	2 720	35.2%	29.8%
December	2 417	56.1%	2 483	46.9%	-2.7%
Total	29 737	44.9%	26 902	37.3%	10.5%



Top 10 Autoturisme DIESEL import - marci / Top 10 Imported Diesel powered passenger car sales by make

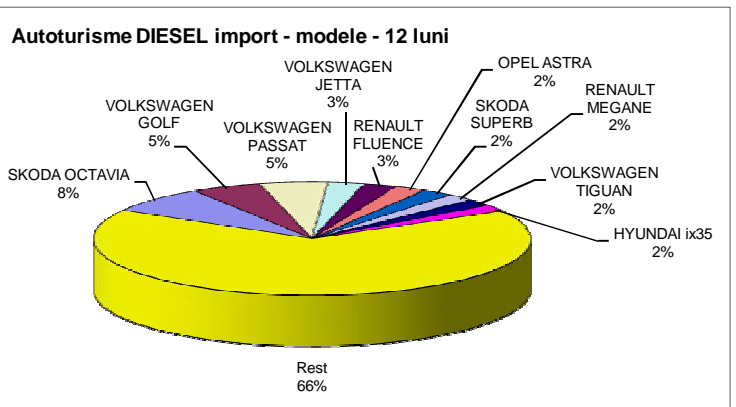
MARCA	Decembrie 2011	12 luni 2011	Pondere %	Variatie an precedent %	Pondere diesel / total
VOLKSWAGEN	447	5833	19.6%	38.0%	58.1%
SKODA	261	3665	12.3%	-3.4%	44.4%
FORD	299	2615	8.8%	-10.2%	47.1%
RENAULT	121	2282	7.7%	-32.5%	31.6%
BMW	265	1908	6.4%	33.3%	94.1%
PEUGEOT	53	1714	5.8%	26.0%	70.7%
OPEL	160	1610	5.4%	23.9%	33.0%
MERCEDES BENZ *)	124	1298	4.4%	34.2%	84.1%
HYUNDAI	99	1269	4.3%	-12.2%	37.3%
AUDI	68	1244	4.2%	31.9%	77.8%
Rest	520	6299	21.2%	20.6%	32.6%
TOTAL	2417	29737	100.0%	10.2%	44.9%



*) Estimari APIA / APIA Estimates

Top 10 Autoturisme DIESEL import - modele / Top 10 Imported Diesel powered passenger car sales by model

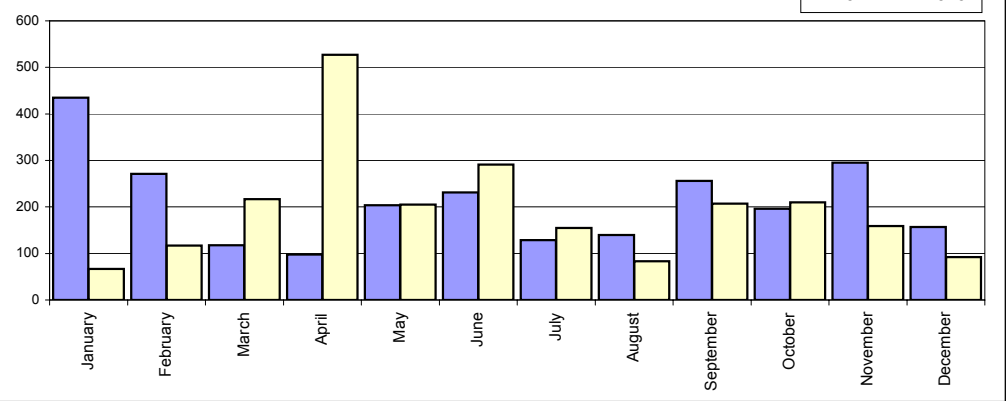
MODEL	Decembrie 2011	12 luni 2011	Pondere %	Variatie an precedent %	Pondere diesel / total
SKODA OCTAVIA	146	2275	7.7%	7.0%	52.7%
VOLKSWAGEN GOLF	71	1541	5.2%	59.4%	52.7%
VOLKSWAGEN PASSAT	107	1483	5.0%	2.5%	84.7%
VOLKSWAGEN JETTA	77	801	2.7%	217.9%	52.9%
RENAULT FLUENCE	31	732	2.5%	1.2%	48.9%
OPEL ASTRA	77	688	2.3%	30.1%	31.0%
SKODA SUPERB	73	684	2.3%	39.9%	90.8%
RENAULT MEGANE	53	617	2.1%	-10.2%	53.1%
VOLKSWAGEN TIGUAN	78	583	2.0%	1.2%	72.5%
HYUNDAI ix35	40	575	1.9%	28.1%	87.4%
Rest	1664	19758	66.4%	5.4%	40.6%
TOTAL	2417	29737	100.0%	10.2%	44.9%



Livrari comerciale usoare + minibus autohtone / Domestic LCV + minibus sales

Luna/An	2011	2010	Variatie
January	435	67	549.3%
February	271	117	131.6%
March	118	217	-45.6%
April	98	527	-81.4%
May	204	205	-0.5%
June	231	291	-20.6%
July	129	155	-16.8%
August	140	83	68.7%
September	256	207	23.7%
October	196	210	-6.7%
November	295	159	85.5%
December	157	92	70.7%
Total	2 530	2 330	8.6%

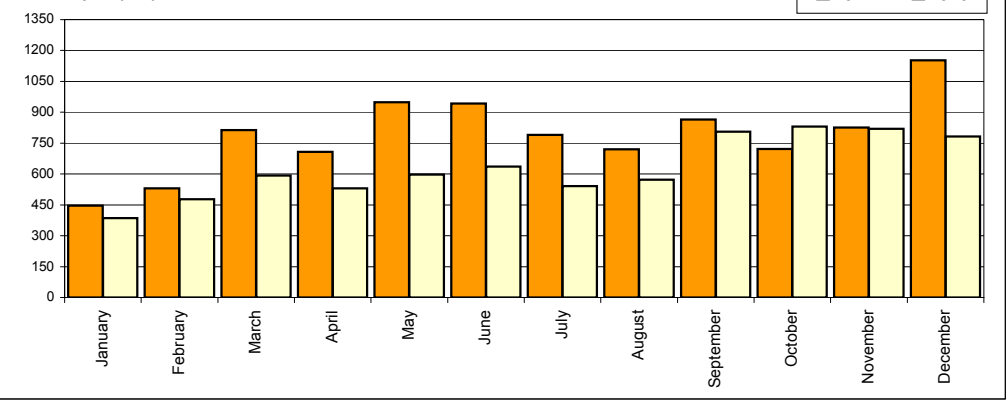
Livrari autohtone (buc)



Livrari comerciale usoare + minibus import / Imported LCV + minibus sales

Luna/An	2011	2010	Variatie
January	446	386	15.5%
February	531	478	11.1%
March	813	592	37.3%
April	708	531	33.3%
May	949	598	58.7%
June	942	636	48.1%
July	790	541	46.0%
August	720	572	25.9%
September	864	805	7.3%
October	721	831	-13.2%
November	826	819	0.9%
December	1 153	782	47.4%
Total	9 463	7 571	25.0%

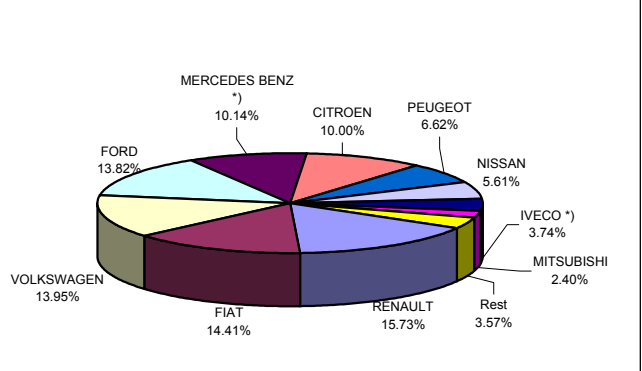
Livrari import (buc)



Livrari comerciale <3.5t si minibus import - marci / Imported LCV + minibus sales by make

MARCA	Decembrie		Variatie Noiembrie		2011		Variatie 2010	
	pozitie	unitati	pozitie	procent	pozitie	unitati	pozitie	procent
RENAULT	3	170	2 ↗	34.9%	1	1489	6 ↗	132.3%
FIAT	4	110	3 ↗	4.8%	2	1364	3 ↗	33.6%
VOLKSWAGEN	2	207	1 ↗	60.5%	3	1320	1 ↗	14.6%
FORD	1	297	5 ↗	206.2%	4	1308	4 ↗	21.4%
MERCEDES BENZ *)	5	70	4 ↘	-31.4%	5	960	5 ↗	5.5%
CITROEN	6	68	6 ↘	-27.7%	6	946	7 ↗	84.8%
PEUGEOT	9	27	7 ↘	-47.1%	7	626	8 ↗	45.6%
NISSAN	7	55	8 ↗	61.8%	8	531	10 ↗	111.6%
IVECO *)	8	45	10 ↘	-28.6%	9	354	2 ↘	-64.5%
MITSUBISHI	10	20	9 ↗	17.6%	10	227	9 ↘	-20.4%
Rest		84		31.3%		338		3.7%
TOTAL		1153		39.6%		9463		25.0%

Vanzari com <3.5t si minibus import - marci - 2011

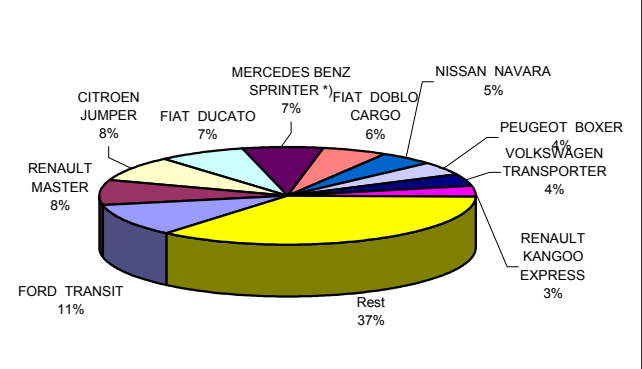


*) Estimari APIA / APIA Estimates

Livrari comerciale <3.5t si minibus import - modele / Imported LCV + minibus sales by model

MODEL	Decembrie		Variatie Noiembrie		2011		Variatie 2010	
	pozitie	unitati	pozitie	procent	pozitie	unitati	pozitie	procent
FORD TRANSIT	1	265	3 ↗	278.6%	1	1017	1 ↗	20.8%
RENAULT MASTER	4	71	6 ↗	42.0%	2	802	8 ↗	115.6%
CITROEN JUMPER	5	66	1 ↘	-25.0%	3	797	9 ↗	125.8%
FIAT DUCATO	10	36	4 ↘	-47.8%	4	702	3 ↗	18.0%
MERCEDES BENZ SPRINTER *)	9	48	2 ↘	-39.2%	5	647	2 ↘	-4.9%
FIAT DOBLO CARGO	3	74	9 ↗	111.4%	6	545	7 ↗	55.3%
NISSAN NAVARA	7	54	13 ↗	170.0%	7	427	13 ↗	96.8%
PEUGEOT BOXER	11	24	7 ↘	-46.7%	8	418	14 ↗	70.6%
VOLKSWAGEN TRANSPORTER	2	123	5 ↗	123.6%	9	381	18 ↗	168.3%
RENAULT KANGOO EXPRESS	12	21	8 ↘	-48.8%	10	330	16 ↗	197.3%
Rest		371		59.2%		3397		-8.1%
TOTAL		1153		39.6%		9463		25.0%

Vanzari com <3.5t si minibus import - modele - 2011



*) Estimari APIA / APIA Estimates