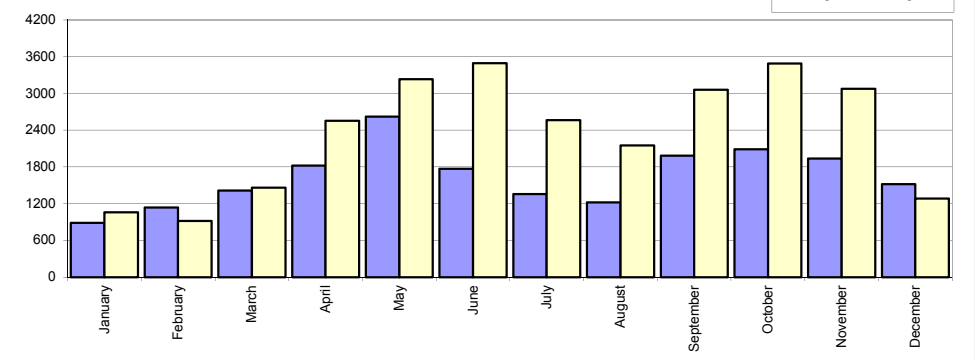


Livrari autoturisme autohtone / Domestic passenger car sales

Luna/An	2012	2011	Variatie
January	887	1 058	-16.2%
February	1 137	919	23.7%
March	1 413	1 459	-3.2%
April	1 824	2 554	-28.6%
May	2 621	3 232	-18.9%
June	1 771	3 492	-49.3%
July	1 354	2 564	-47.2%
August	1 220	2 152	-43.3%
September	1 981	3 060	-35.3%
October	2 088	3 487	-40.1%
November	1 935	3 076	-37.1%
December	1 518	1 284	18.2%
Total	19 749	28 337	-30.3%

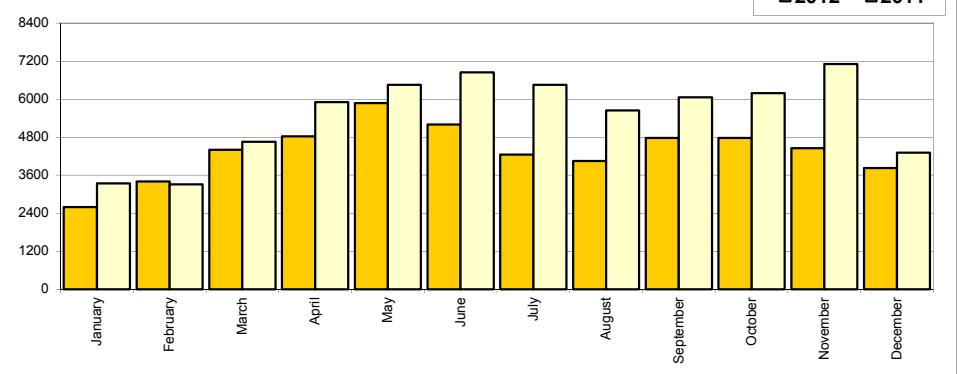
Livrari autohtone (buc)



Livrari autoturisme import / Imported passenger car sales

Luna/An	2012	2011	Variatie
January	2 588	3 341	-22.5%
February	3 405	3 314	2.7%
March	4 402	4 654	-5.4%
April	4 826	5 911	-18.4%
May	5 876	6 450	-8.9%
June	5 200	6 847	-24.1%
July	4 249	6 452	-34.1%
August	4 050	5 649	-28.3%
September	4 778	6 060	-21.2%
October	4 776	6 191	-22.9%
November	4 453	7 110	-37.4%
December	3 827	4 308	-11.2%
Total	52 430	66 287	-20.9%

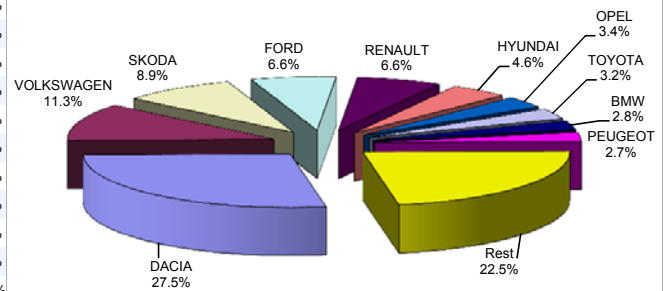
Livrari import (buc)



Top livrari autoturisme - marti / Passenger car top - by make

MARCA	Decembrie		Variatie Noi		2012		Variatie 2011	
	pozitie	unitati	pozitie	procent	pozitie	unitati	pozitie	procent
DACIA	1	1602	1	-18.3%	1	19948	1	-29.6%
VOLKSWAGEN	2	496	2	-36.4%	2	8046	2	-19.9%
SKODA	3	359	3	-28.3%	3	6291	3	-23.8%
RENAULT	4	357	4	-5.6%	4	4785	4	-33.8%
FORD	6	251	5	-26.2%	5	4682	5	-15.6%
HYUNDAI	7	241	6	-10.1%	6	3300	7	-3.1%
OPEL	10	190	8	-11.6%	7	2446	6	-49.8%
TOYOTA	8	202	9	11.6%	8	2315	9	-20.2%
BMW	5	266	7	19.8%	9	2161	12	6.6%
PEUGEOT	15	95	10	-41.4%	10	1910	10	-21.2%
Rest		1286		-6.7%		16295		-16.8%
TOTAL		5345		-16.3%		72179		-23.7%

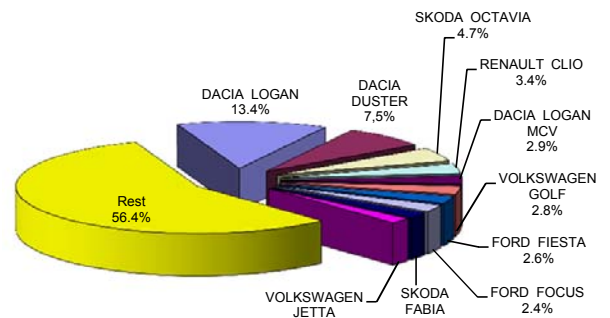
Autoturisme - marti - 2012



Top livrari autoturisme - modele / Passenger car top - by model

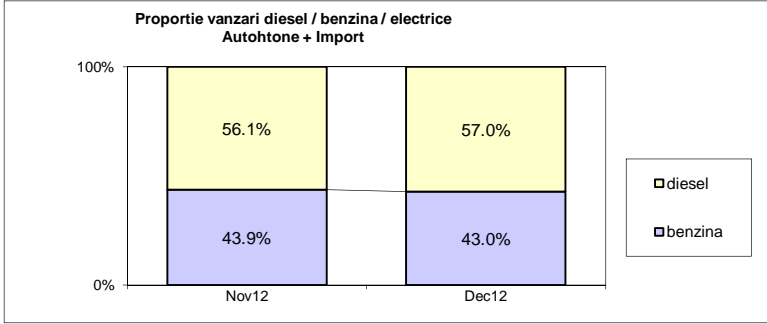
MODEL	Decembrie		Variatie Noi		2012		Variatie 2011	
	pozitie	unitati	pozitie	procent	pozitie	unitati	pozitie	procent
DACIA LOGAN	1	800	1	-3.1%	1	9780	1	-38.1%
DACIA DUSTER	2	323	2	-30.5%	2	5346	2	-26.3%
SKODA OCTAVIA	5	182	3	-31.3%	3	3350	3	-22.4%
RENAULT CLIO	4	219	7	9.0%	4	2478	4	-36.8%
VOLKSWAGEN GOLF	6	115	5	-52.1%	5	1986	5	-32.0%
DACIA LOGAN MCV	34	33	8	-76.6%	6	1940	6	-29.7%
FORD FIESTA	19	56	9	-58.8%	7	1801	11	13.1%
FORDNEW FOCUS	9	101	12	-10.6%	8	1707	17	25.1%
DACIA SANDERO	10	100	6	-52.8%	9	1510	7	-40.0%
SKODA FABIA	13	78	13	-25.7%	10	1372	12	-13.1%
Rest		3338		4.5%		40909		-19.1%
TOTAL		5345		-16.3%		72179		-23.7%

Autoturisme - modele - 2012

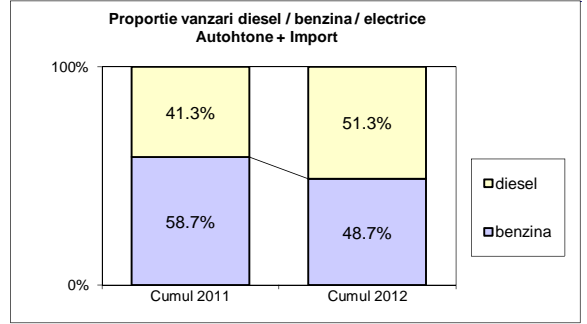


Segmentare dupa tipul de combustibil / Segmentation by type of fuel
Autohtone + Import / Domestic + Imported

	benzina		diesel		electrice	total
Dec-12	2298	43.0%	3047	57.0%	0	5 345
Nov-12	2804	43.9%	3584	56.1%	0	6 388

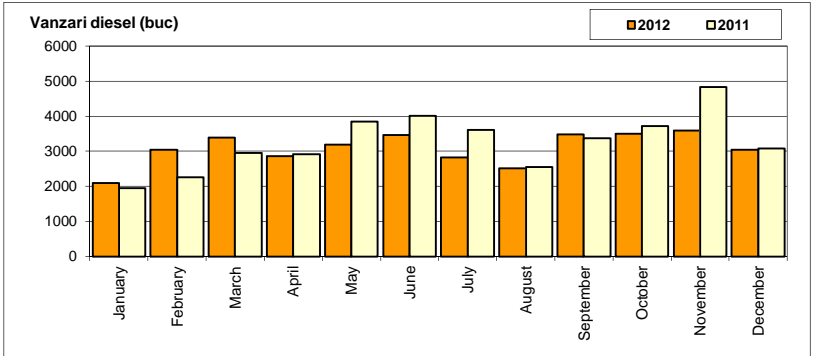


	benzina		diesel		electrice	total
Cumul 2012	35151	48.7%	37027	51.3%	1	72 179
Cumul 2011	55497	58.7%	39122	41.3%	5	94 624



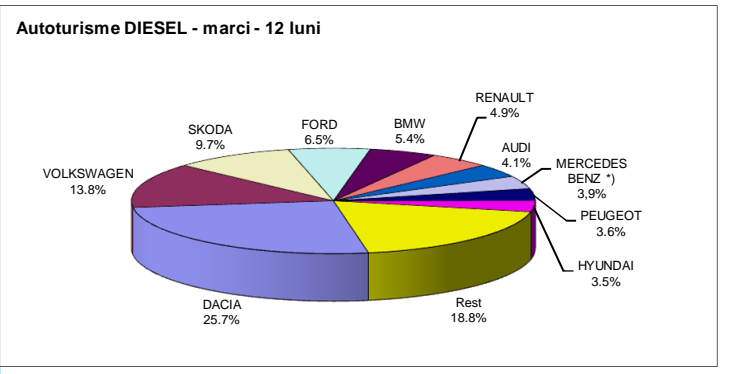
Livrari autoturisme DIESEL - PC sales - diesel -

Luna/An	2012	pondere diesel	2011	pondere diesel	Variatie 12/11
January	2 104	60.5%	1 945	44.2%	8.2%
February	3 040	66.9%	2 263	53.5%	34.3%
March	3 389	58.3%	2 957	48.4%	14.6%
April	2 856	42.9%	2 926	34.6%	-2.4%
May	3 193	37.6%	3 850	39.8%	-17.1%
June	3 470	49.8%	4 011	38.8%	-13.5%
July	2 833	50.6%	3 613	40.1%	-21.6%
August	2 525	47.9%	2 560	32.8%	-1.4%
September	3 485	51.6%	3 366	36.9%	3.5%
October	3 501	51.0%	3 722	38.5%	-5.9%
November	3 584	56.1%	4 822	47.3%	-25.7%
December	3 047	57.0%	3 087	55.2%	-1.3%
Total	37 027	51.3%	39 122	41.3%	-5.4%



Top 10 Autoturisme DIESEL - marci / Top 10 Diesel powered passenger car sales by make

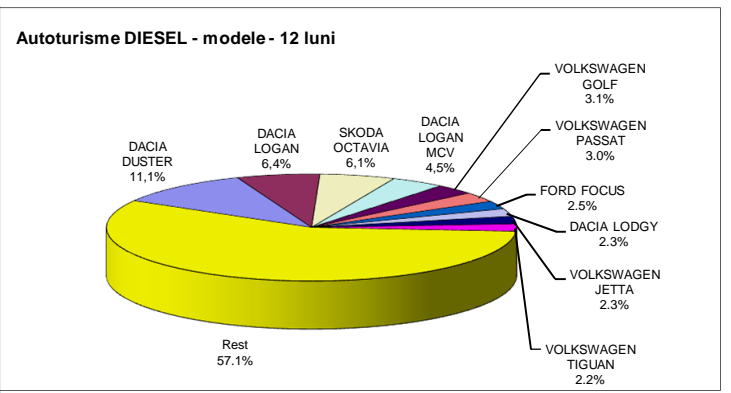
MARCA	Decembrie 2012	12 luni 2012	Pondere %	Variatie an precedent %	Pondere diesel / total
DACIA	879	9529	25.7%	1.5%	47.8%
VOLKSWAGEN	334	5107	13.8%	-12.4%	63.5%
SKODA	235	3575	9.7%	-2.5%	56.8%
FORD	127	2418	6.5%	-7.5%	51.6%
BMW	249	2007	5.4%	5.2%	92.9%
RENAULT	167	1814	4.9%	-20.5%	37.9%
AUDI	86	1508	4.1%	21.2%	79.4%
MERCEDES BENZ*)	131	1458	3.9%	12.3%	92.6%
PEUGEOT	54	1336	3.6%	-22.1%	69.9%
HYUNDAI	131	1300	3.5%	2.4%	39.4%
Rest	654	6975	18.8%	-11.8%	39.7%
TOTAL	3047	37027	100%	-5.4%	51.3%



*) Estimari APIA / APIA Estimates

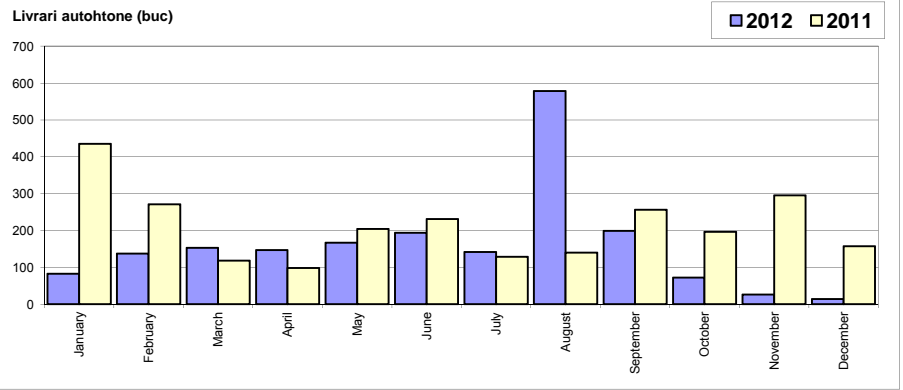
Top 10 Autoturisme DIESEL - modele / Top 10 Diesel powered passenger car sales by model

MODEL	Decembrie 2012	12 luni 2012	Pondere %	Variatie an precedent %	Pondere diesel / total
DACIA DUSTER	207	3988	10.8%	-21.0%	74.6%
DACIA LOGAN	251	2423	6.5%	-4.4%	26.3%
SKODA OCTAVIA	129	2203	5.9%	-3.2%	65.8%
DACIA LOGAN MCV	32	1559	4.2%	-6.5%	80.4%
VOLKSWAGEN GOLF	73	1150	3.1%	-25.4%	57.9%
VOLKSWAGEN PASSAT	101	1100	3.0%	-25.8%	90.5%
FORD FOCUS	52	908	2.5%	-0.9%	49.6%
DACIA LODGY	204	858	2.3%	-	81.3%
VOLKSWAGEN JETTA	46	855	2.3%	6.7%	64.1%
VOLKSWAGEN TIGUAN	40	823	2.2%	41.2%	79.9%
Rest	1912	21160	57.1%	-7.2%	48.1%
TOTAL	3047	37027	100%	-5.4%	51.3%



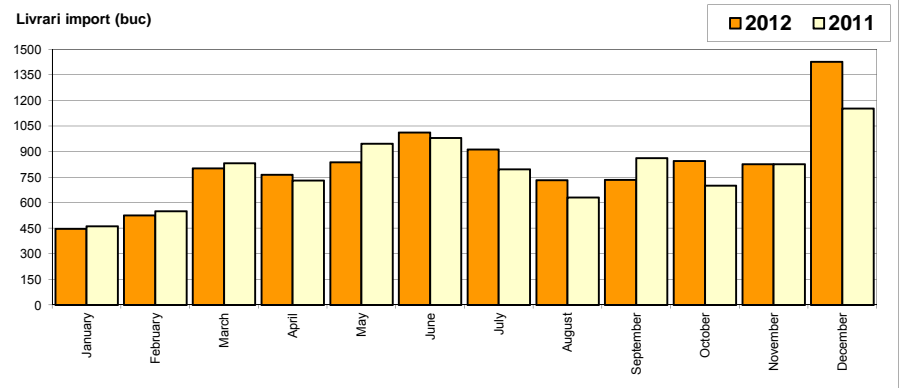
Livrarile comerciale usoare + minibus autohtone / Domestic LCV + minibus sales

Luna/An	2012	2011	Variatie
January	83	435	-80.9%
February	137	271	-49.4%
March	153	118	29.7%
April	147	98	50.0%
May	167	204	-18.1%
June	194	231	-16.0%
July	142	129	10.1%
August	578	140	312.9%
September	199	256	-22.3%
October	72	196	-63.3%
November	26	295	-91.2%
December	14	157	-91.1%
Total	1 912	2 530	-24.4%



Livrarile comerciale usoare + minibus import / Imported LCV + minibus sales

Luna/An	2012	2011	Variatie
January	446	461	-3.3%
February	525	549	-4.4%
March	801	832	-3.7%
April	764	729	4.8%
May	836	946	-11.6%
June	1 012	979	3.4%
July	911	796	14.4%
August	731	631	15.8%
September	734	862	-14.8%
October	845	699	20.9%
November	825	826	-0.1%
December	1 427	1 153	23.8%
Total	9 857	9 463	4.2%

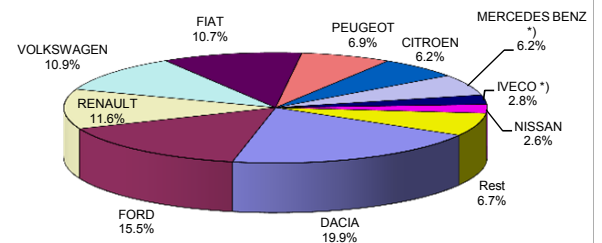


Livrarile comerciale <3.5t si minibus - marci / LCV + minibus sales by make

MARCA	Decembrie		Var Noi		2012	Variatie 2011		
	pozitie	unitati	pozitie	procent		pozitie	unitati	procent
DACIA	3	172	6 ↗	123.4%	1	2200	1 ↘	-13.0%
FORD	8	83	3 ↘	-24.5%	2	1660	5 ↗	26.9%
RENAULT	5	102	2 ↘	-25.5%	3	1287	2 ↘	-13.6%
VOLKSWAGEN	7	83	5 ↘	-12.6%	4	1190	4 ↘	-9.8%
FIAT	6	85	4 ↘	-10.5%	5	1176	3 ↘	-13.8%
MERCEDES BENZ *)	1	355	1 ↗	144.8%	6	1131	6 ↗	17.8%
CITROEN	2	302	9	-	7	937	7 ↘	-1.0%
PEUGEOT	9	44	7 ↘	-22.8%	8	749	8 ↗	19.6%
IVECO *)	4	128	8 ↗	236.8%	9	410	10 ↗	15.8%
NISSAN	13	13	13 ↗	160.0%	10	273	9 ↘	-48.6%
Rest		74		13.8%		756		33.8%
TOTAL		1441		69.3%		11769		-1.9%

*) Estimari APIA / APIA Estimates

Vanzari com <3.5t si minibus - marci - 2012



Livrarile comerciale <3.5t si minibus - modele / LCV + minibus sales by model

MODEL	Decembrie		Var Noi		2012	Variatie 2011		
	pozitie	unitati	pozitie	procent		pozitie	unitati	procent
DACIA LOGAN VAN	25	8	15 ↘	-65.2%	1	1355	1 ↘	-17.1%
FORD TRANSIT	6	61	2 ↘	-17.6%	2	977	2 ↘	-3.9%
CITROEN JUMPER	1	277	17	-	3	678	5 ↘	-14.9%
FIAT DUCATO	9	51	4 ↗	6.3%	4	616	6 ↘	-12.3%
RENAULT MASTER	7	56	6 ↗	21.7%	5	596	4 ↘	-25.7%
MERCEDES SPRINTER *)	5	74	7 ↗	64.4%	6	550	7 ↘	-15.0%
FIAT DOBLO CARGO	11	32	9 ↘	-17.9%	7	531	8 ↘	-2.6%
PEUGEOT BOXER	10	38	8 ↘	-5.0%	8	527	10 ↗	26.1%
DACIA LOGAN PICK-UP	36	0	31	-	9	456	3 ↘	-49.1%
MERCEDES SPRINTER BUS *)	2	275	1 ↗	175.0%	10	448	-	-
Rest		569		38.1%		5035		11.5%
TOTAL		1441		69.3%		11769		-1.9%

*) Estimari APIA / APIA Estimates

Vanzari com <3.5t si minibus - modele - 2012

