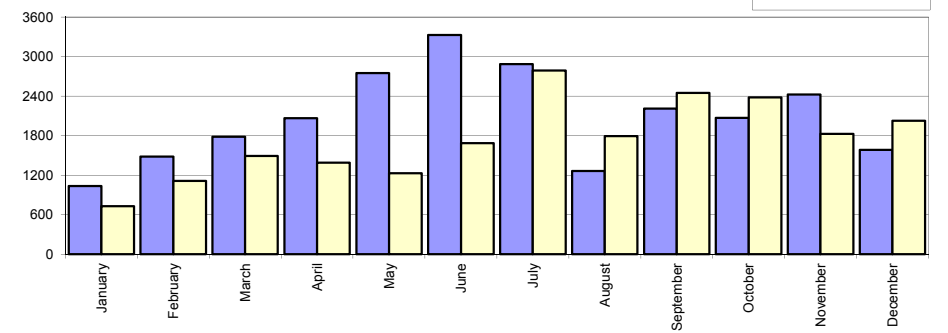


## Livrari autoturisme autohtone / Domestic passenger car sales

Luna/An	2014	2013	Variatie
January	1 034	729	41.8%
February	1 481	1 114	32.9%
March	1 785	1 490	19.8%
April	2 067	1 389	48.8%
May	2 749	1 230	123.5%
June	3 326	1 688	97.0%
July	2 885	2 790	3.4%
August	1 265	1 795	-29.5%
September	2 209	2 447	-9.7%
October	2 069	2 380	-13.1%
November	2 423	1 828	32.5%
December	1 582	2 028	-22.0%
<b>Total</b>	<b>24 875</b>	<b>20 908</b>	<b>19.0%</b>

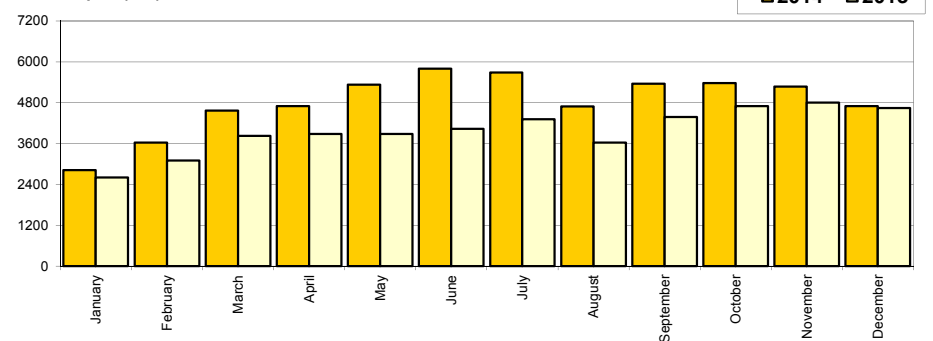
Livrari autohtone (buc)



## Livrari autoturisme import / Imported passenger car sales

Luna/An	2014	2013	Variatie
January	2 821	2 605	8.3%
February	3 627	3 099	17.0%
March	4 572	3 831	19.3%
April	4 701	3 879	21.2%
May	5 330	3 879	37.4%
June	5 797	4 031	43.8%
July	5 682	4 315	31.7%
August	4 694	3 631	29.3%
September	5 362	4 384	22.3%
October	5 374	4 696	14.4%
November	5 272	4 805	9.7%
December	4 702	4 641	1.3%
<b>Total</b>	<b>57 934</b>	<b>47 796</b>	<b>21.2%</b>

Livrari import (buc)

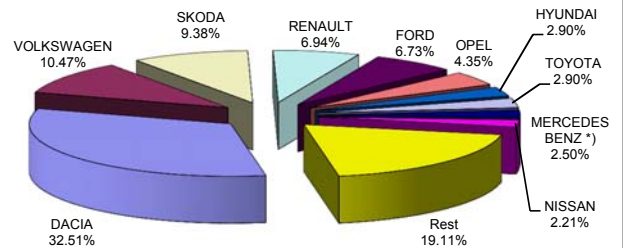


## Top livrari autoturisme - marci / Passenger car top - by make

MARCA	Decembrie		Variatie Noiembrie		2014		Variatie 2013	
	pozitie	unitati	pozitie	procent	pozitie	unitati	pozitie	procent
DACIA	1	1750	1	-34.5%	1	<b>26918</b>	1	18.4%
VOLKSWAGEN	2	677	2	-12.5%	2	<b>8674</b>	2	16.5%
SKODA	3	498	3	-31.2%	3	<b>7770</b>	3	40.9%
RENAULT	4	451	4	-25.9%	4	<b>5750</b>	4	40.7%
FORD	5	313	5	-30.3%	5	<b>5569</b>	5	49.4%
OPEL	7	243	6	-15.3%	6	<b>3605</b>	6	29.4%
HYUNDAI	14	140	12	-20.0%	7	<b>2405</b>	7	-5.2%
TOYOTA	10	205	7	-10.5%	8	<b>2402</b>	8	7.2%
MERCEDES BENZ *)	9	214	8	2.9%	9	<b>2069</b>	12	29.4%
NISSAN	6	248	9	24.6%	10	<b>1826</b>	13	26.3%
Rest		1545		12.8%		<b>15821</b>		8.4%
<b>TOTAL</b>		<b>6284</b>		<b>-18.3%</b>		<b>82809</b>		<b>20.5%</b>

\*) Estimari APIA / APIA Estimates

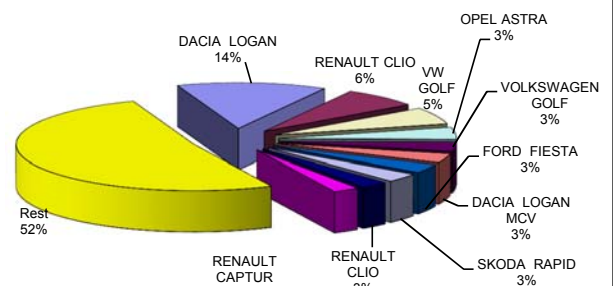
Autoturisme - marci - 2014



## Top livrari autoturisme - modele / Passenger car top - by model

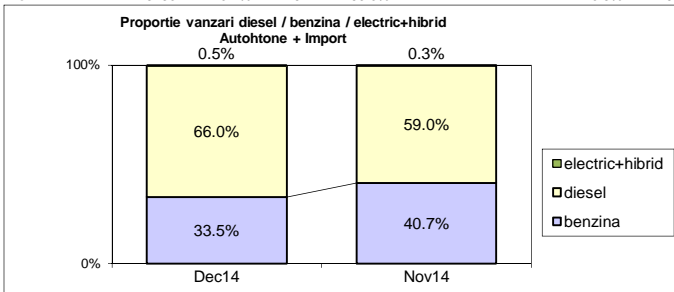
MODEL	Decembrie		Variatie Noiembrie		2014		Variatie 2013	
	pozitie	unitati	pozitie	procent	pozitie	unitati	pozitie	procent
DACIA LOGAN	1	542	2	-40.4%	1	<b>11285</b>	1	10.6%
DACIA DUSTER	2	448	1	-56.3%	2	<b>5796</b>	3	32.1%
DACIA SANDERO	3	358	3	-1.4%	3	<b>4957</b>	2	4.2%
SKODA OCTAVIA	4	264	5	-4.7%	4	<b>3473</b>	4	17.8%
VW GOLF	7	168	10	-6.2%	5	<b>2739</b>	5	2.4%
DACIA LOGAN MCV	5	228	14	91.6%	6	<b>2646</b>	10	124.4%
FORD FIESTA	10	135	4	-51.4%	7	<b>2569</b>	11	120.3%
SKODA RAPID	9	149	8	-25.9%	8	<b>2546</b>	9	113.1%
RENAULT CLIO	11	125	6	-49.0%	9	<b>2088</b>	6	20.6%
RENAULT CAPTUR	6	206	7	-10.4%	10	<b>1981</b>	15	107.0%
Rest		3661		-5.4%		<b>42729</b>		13.9%
<b>TOTAL</b>		<b>6284</b>		<b>-18.3%</b>		<b>82809</b>		<b>20.5%</b>

Autoturisme - modele - 2014

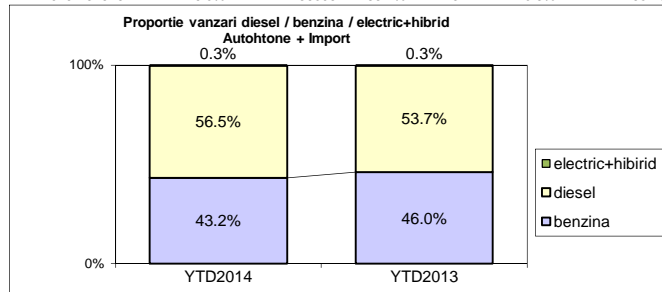


**Segmentare dupa tipul de combustibil / Segmentation by type of fuel**  
**Autohtone + Import / Domestic + Imported**

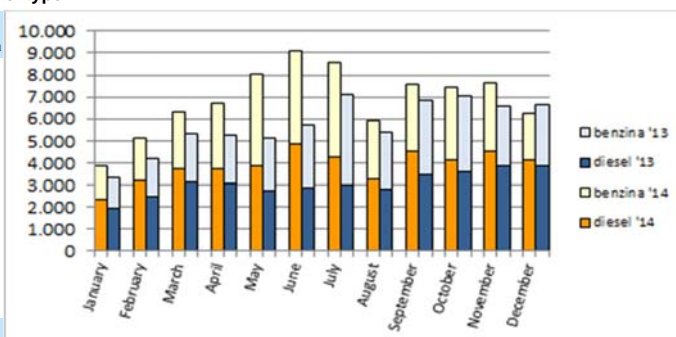
	benzina		diesel		electric+hibrid		total
Dec-14	2108	33.5%	4146	66.0%	30	0.5%	6 284
Nov-14	3130	40.7%	4541	59.0%	24	0.3%	7 695



	benzina		diesel		electric+hibrid		total
YTD2014	35804	43.2%	46769	56.5%	236	0.3%	82 809
YTD2013	31575	46.0%	36895	53.7%	234	0.3%	68 704


**Livrari autoturisme in functie de tipul de combustibil / Passenger car sales by fuel type**

Luna/An	2014		Pondere		2013		Variatie 14/13	
	diesel	benzina	diesel	benzina	diesel	benzina	diesel	benzina
January	2 364	1 480	61.3%	38.4%	1 979	1 343	19.5%	10.2%
February	3 208	1 885	62.8%	36.9%	2 467	1 722	30.0%	9.5%
March	3 757	2 575	59.1%	40.5%	3 145	2 158	19.5%	19.3%
April	3 762	2 983	55.6%	44.1%	3 041	2 216	23.7%	34.6%
May	3 883	4 173	48.1%	51.7%	2 765	2 334	40.4%	78.8%
June	4 853	4 251	53.2%	46.6%	2 889	2 817	68.0%	50.9%
July	4 297	4 257	50.2%	49.7%	3 029	4 056	41.9%	5.0%
August	3 264	2 686	54.8%	45.1%	2 800	2 605	16.6%	3.1%
September	4 547	3 005	60.1%	39.7%	3 459	3 357	31.5%	-10.5%
October	4 147	3 271	55.7%	43.9%	3 581	3 472	15.8%	-5.8%
November	4 541	3 130	59.0%	40.7%	3 868	2 735	17.4%	14.4%
December	4 146	2 108	66.0%	33.5%	3 872	2 760	7.1%	-23.6%
<b>Total</b>	<b>46 769</b>	<b>35 804</b>	<b>56.5%</b>	<b>43.2%</b>	<b>36 895</b>	<b>31 575</b>	<b>26.8%</b>	<b>13.4%</b>


**Top 10 Autoturisme in functie de tipul de alimentare - marci / Top 10 passenger car sales by fuel type and make**
**Top 10 diesel - marci**

MARCA	Decembrie 2014	12 luni 2014	Pondere %	Variatie an precedent %	Pondere diesel/total
DACIA	1211	13008	27.8%	23.9%	48.3%
VOLKSWAGEN	425	5693	12.2%	20.6%	65.6%
SKODA	364	4518	9.7%	30.9%	58.1%
RENAULT	353	3959	8.5%	33.4%	68.9%
FORD	152	3610	7.7%	78.3%	64.8%
MERCEDES BENZ *)	187	1853	4.0%	30.5%	89.6%
OPEL	133	1673	3.6%	83.0%	46.4%
AUDI	169	1432	3.1%	-0.3%	78.7%
BMW	178	1410	3.0%	-10.5%	94.6%
PEUGEOT	79	1213	2.6%	0.0%	68.5%
Rest	895	8400	18.0%	25.9%	48.4%
<b>TOTAL</b>	<b>4146</b>	<b>46769</b>	<b>100%</b>	<b>26.8%</b>	<b>56.5%</b>

\*) Estimari APIA / APIA Estimates

**Top 10 benzina - marci**

MARCA	Decembrie 2014	12 luni 2014	Pondere %	Variatie an precedent %	Pondere benzina/total
DACIA	539	13910	38.9%	13.8%	51.7%
SKODA	134	3252	9.1%	57.5%	41.9%
VOLKSWAGEN	252	2981	8.3%	9.4%	34.4%
FORD	161	1959	5.5%	15.1%	35.2%
OPEL	110	1931	5.4%	3.3%	53.6%
RENAULT	98	1791	5.0%	59.8%	31.1%
HYUNDAI	60	1481	4.1%	-2.5%	61.6%
TOYOTA	119	1390	3.9%	13.3%	57.9%
SUZUKI	76	1189	3.3%	0.1%	97.2%
FIAT	138	987	2.8%	42.4%	55.9%
Rest	421	4933	13.8%	-5.8%	29.5%
<b>TOTAL</b>	<b>2108</b>	<b>35804</b>	<b>100%</b>	<b>13.4%</b>	<b>43.2%</b>

\*) Estimari APIA / APIA Estimates

**Top 10 Autoturisme in functie de tipul de alimentare - modele / Top 10 passenger car sales by fuel type and model**
**Top 10 diesel - model**

MODEL	Decembrie 2014	12 luni 2014	Pondere %	Variatie an precedent %	Pondere diesel/total
DACIA DUSTER	382	4390	9.4%	18.2%	75.7%
DACIA LOGAN	228	3502	7.5%	26.8%	31.0%
SKODA OCTAVIA	232	2637	5.6%	22.2%	75.9%
DACIA SANDERO	278	1865	4.0%	4.3%	37.6%
VOLKSWAGEN GOLF	120	1841	3.9%	30.1%	67.2%
FORD FIESTA	58	1706	3.6%	219.5%	66.4%
RENAULT CAPTUR	182	1580	3.4%	110.1%	79.8%
DACIA LOGAN MCV	170	1435	3.1%	174.9%	54.2%
VOLKSWAGEN PASSAT	46	1344	2.9%	45.9%	98.6%
DACIA DOKKER	89	1294	2.8%	8.6%	81.1%
Rest	2361	25175	53.8%	19.1%	56.7%
<b>TOTAL</b>	<b>4146</b>	<b>46769</b>	<b>100%</b>	<b>26.8%</b>	<b>56.5%</b>

\*) Estimari APIA / APIA Estimates

**Top 10 benzina - model**

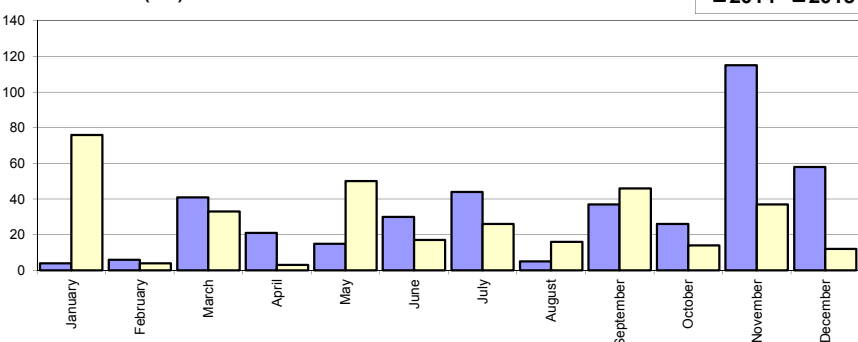
MODEL	Decembrie 2014	12 luni 2014	Pondere %	Variatie an precedent %	Pondere benzina/total
DACIA LOGAN	314	7783	21.7%	4.6%	69.0%
DACIA SANDERO	80	3092	8.6%	4.1%	62.4%
SKODA RAPID	64	1625	4.5%	140.4%	63.8%
DACIA DUSTER	66	1406	3.9%	108.9%	24.3%
VOLKSWAGEN POLO	138	1299	3.6%	88.8%	81.3%
DACIA LOGAN MCV	58	1211	3.4%	84.3%	45.8%
RENAULT CLIO	43	952	2.7%	65.6%	45.6%
VOLKSWAGEN GOLF	48	898	2.5%	-28.8%	32.8%
FORD FIESTA	77	863	2.4%	36.6%	33.6%
SKODA OCTAVIA	32	836	2.3%	5.7%	24.1%
Rest	1188	15839	44.2%	4.1%	36.7%
<b>TOTAL</b>	<b>2108</b>	<b>35804</b>	<b>100%</b>	<b>13.4%</b>	<b>43.2%</b>

\*) Estimari APIA / APIA Estimates

## Livrarile comerciale usoare + minibus autohtone / Domestic LCV + minibus sales

Luna/An	2014	2013	Variatie
January	4	76	-94.7%
February	6	4	50.0%
March	41	33	24.2%
April	21	3	600.0%
May	15	50	-70.0%
June	30	17	76.5%
July	44	26	69.2%
August	5	16	-68.8%
September	37	46	-19.6%
October	26	14	85.7%
November	115	37	210.8%
December	58	12	383.3%
<b>Total</b>	<b>402</b>	<b>334</b>	<b>20.4%</b>

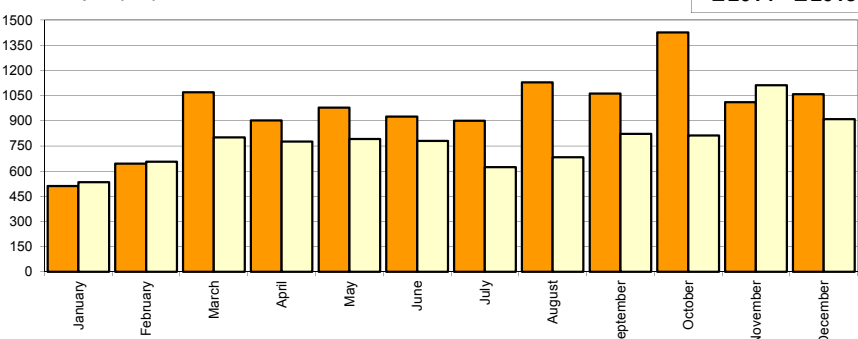
Livrarile autohtone (buc)



## Livrarile comerciale usoare + minibus import / Imported LCV + minibus sales

Luna/An	2014	2013	Variatie
January	511	535	-4.5%
February	645	657	-1.8%
March	1 069	801	33.5%
April	903	776	16.4%
May	978	792	23.5%
June	925	780	18.6%
July	900	624	44.2%
August	1 128	683	65.2%
September	1 062	823	29.0%
October	1 426	812	75.6%
November	1 011	1 111	-9.0%
December	1 058	909	16.4%
<b>Total</b>	<b>11 616</b>	<b>9 303</b>	<b>24.9%</b>

Livrarile import (buc)

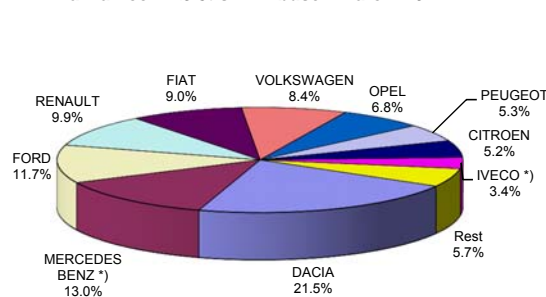


## Livrarile comerciale &lt;3.5t si minibus - marci / LCV + minibus sales by make

MARCA	Decembrie		Variatie Noiembrie		2014		Variatie 2013	
	pozitie	unitati	pozitie	procent	pozitie	unitati	pozitie	procent
DACIA	1	274	1	-17.5%	1	2707	1	25.2%
FORD	2	185	2	43.4%	2	1409	2	4.1%
MERCEDES BENZ *)	4	156	3	47.2%	3	1391	4	39.0%
VOLKSWAGEN	3	172	7	117.7%	4	1040	5	7.7%
FIAT	5	90	4	-10.0%	5	1034	6	45.8%
RENAULT	7	59	6	-31.4%	6	991	3	-1.5%
OPEL	12	11	13	37.5%	7	821	13	526.7%
PEUGEOT	8	45	8	-18.2%	8	788	8	33.3%
CITROEN	6	62	5	-35.4%	9	664	7	12.4%
TOYOTA	11	15	12	7.1%	10	421	10	36.3%
Rest		47		-61.2%		752		-8.0%
<b>TOTAL</b>		1116		-0.9%		12018		24.7%

\*) Estimari APIA / APIA Estimates

Vanzari com &lt;3.5t si minibus - marci - 2014



## Livrarile comerciale &lt;3.5t si minibus - modele / LCV + minibus sales by model

MODEL	Decembrie		Variatie Noiembrie		2014		Variatie 2013	
	pozitie	unitati	pozitie	procent	pozitie	unitati	pozitie	procent
DACIA DOKKER VAN	1	216	1	-0.5%	1	2305	1	26.0%
FORD TRANSIT	2	95	3	5.6%	2	801	2	1.1%
OPEL MOVANO	25	9	37	200.0%	3	695	36	-
PEUGEOT BOXER	10	38	8	-13.6%	4	663	5	53.8%
MERCEDES *) SPRINTER	3	87	10	117.5%	5	658	8	84.8%
FIAT DUCATO	4	70	5	18.6%	6	649	7	74.0%
CITROEN JUMPER	13	27	4	-69.7%	7	532	3	2.3%
RENAULT MASTER	12	32	11	-20.0%	8	480	4	-3.6%
MERCEDES *) SPRINTER BUS	7	50	12	78.6%	9	416	6	-3.5%
IVECO *) DAILY	14	26	7	-42.2%	10	361	10	15.3%
Rest		466		-1.1%		4458		9.7%
<b>TOTAL</b>		1116		-0.9%		12018		24.7%

\*) Estimari APIA / APIA Estimates

Vanzari com &lt;3.5t si minibus - modele - 2014

