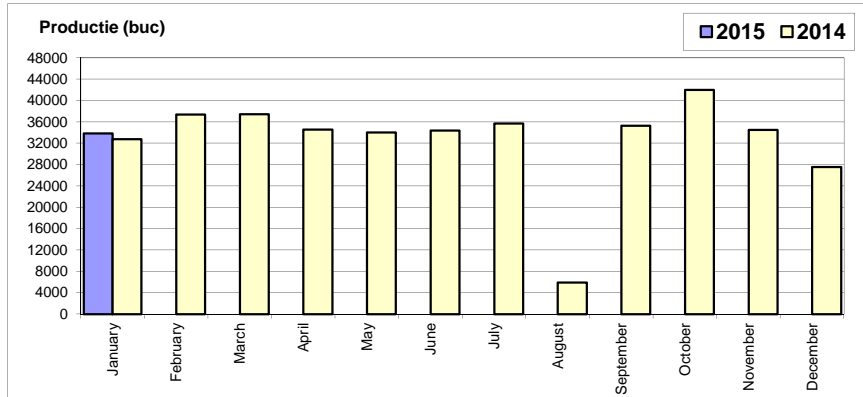


## Productie autoturisme / Passenger car production

Luna/An	2015	2014	Variatie
January	33 834	32 772	3.2%
February	-	37 371	-
March	-	37 430	-
April	-	34 547	-
May	-	34 000	-
June	-	34 399	-
July	-	35 703	-
August	-	5 892	-
September	-	35 294	-
October	-	41 997	-
November	-	34 492	-
December	-	27 525	-
<b>Total</b>	<b>33 834</b>	<b>32 772</b>	<b>3.2%</b>

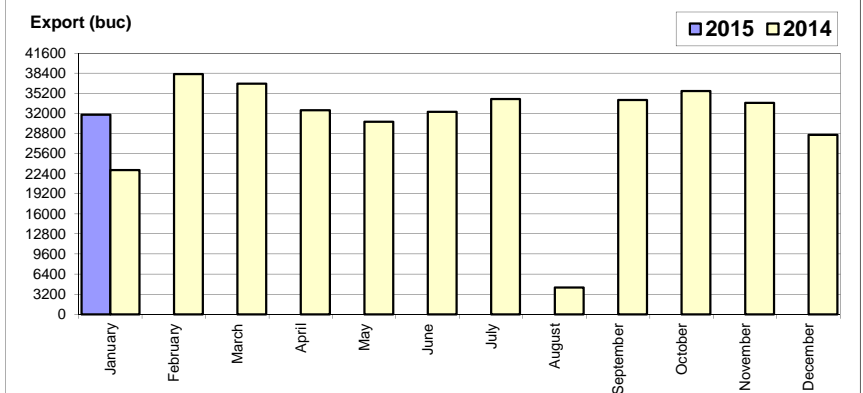
391 422



## Export autoturisme / Passenger car export

Luna/An	2015	2014	Variatie
January	31 801	23 017	38.16%
February	-	38 276	-
March	-	36 741	-
April	-	32 513	-
May	-	30 708	-
June	-	32 285	-
July	-	34 327	-
August	-	4 304	-
September	-	34 181	-
October	-	35 570	-
November	-	33 727	-
December	-	28 602	-
<b>Total</b>	<b>31 801</b>	<b>23 017</b>	<b>38.2%</b>

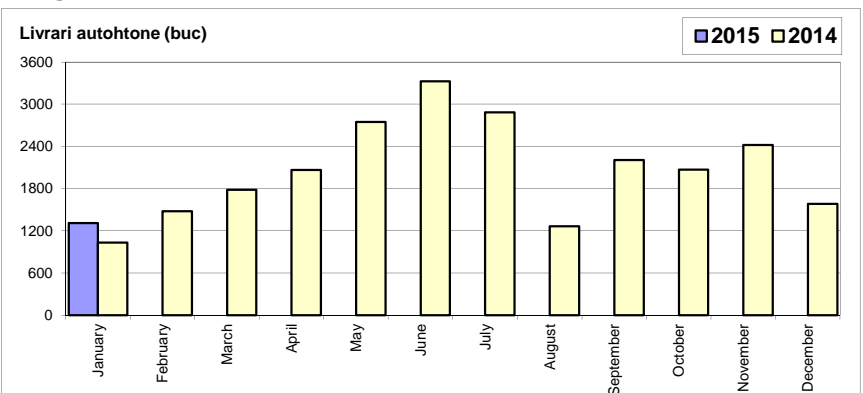
364 251



## Livrari autoturisme autohtone / Domestic passenger car sales

Luna/An	2015	2014	Variatie
January	1 310	1 034	26.7%
February	-	1 481	-
March	-	1 785	-
April	-	2 067	-
May	-	2 749	-
June	-	3 326	-
July	-	2 885	-
August	-	1 265	-
September	-	2 209	-
October	-	2 069	-
November	-	2 423	-
December	-	1 582	-
<b>Total</b>	<b>1 310</b>	<b>1 034</b>	<b>26.7%</b>

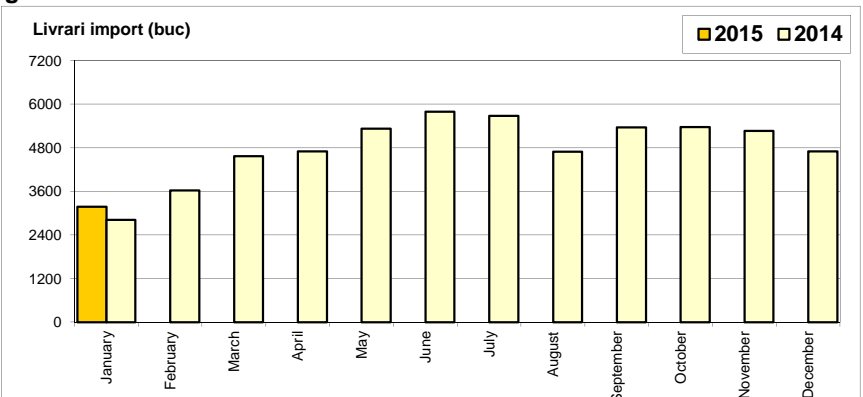
24 875



## Livrari autoturisme import / Imported passenger car sales

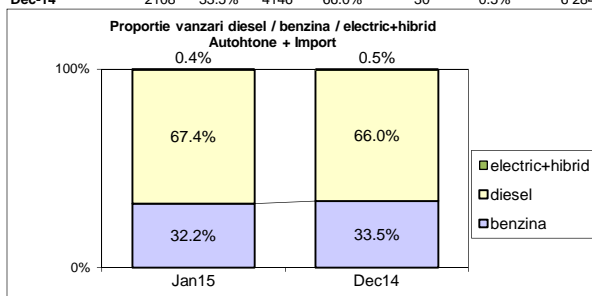
Luna/An	2015	2014	Variatie
January	3 183	2 821	12.8%
February	-	3 627	-
March	-	4 572	-
April	-	4 701	-
May	-	5 330	-
June	-	5 797	-
July	-	5 682	-
August	-	4 694	-
September	-	5 361	-
October	-	5 374	-
November	-	5 272	-
December	-	4 702	-
<b>Total</b>	<b>3 183</b>	<b>2 821</b>	<b>12.8%</b>

57 933

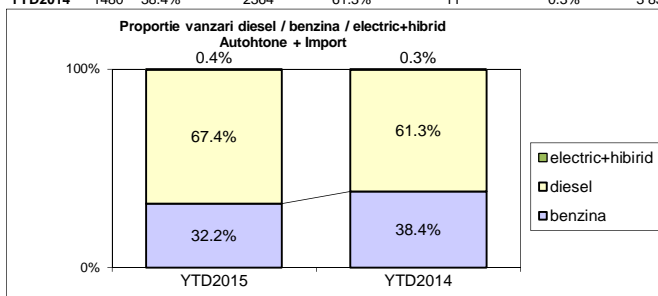


**Segmentare dupa tipul de combustibil / Segmentation by type of fuel**  
**Autohtone + Import / Domestic + Imported**

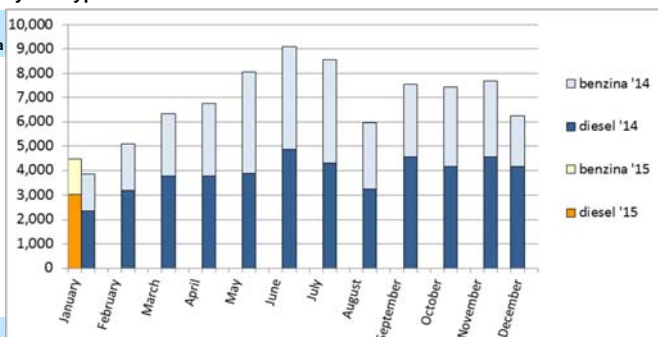
	benzina		diesel		electric+hibrid		total
Jan-15	1448	32.2%	3028	67.4%	17	0.4%	4 493
Dec-14	2108	33.5%	4146	66.0%	30	0.5%	6 284



	benzina		diesel		electric+hibrid		total
YTD2015	1448	32.2%	3028	67.4%	17	0.4%	4 493
YTD2014	1480	38.4%	2364	61.3%	11	0.3%	3 855


**Livrari autoturisme in functie de tipul de combustibil / Passenger car sales by fuel type**

Luna/An	2015		Pondere		2014		Variatie 15/14	
	diesel	benzina	diesel	benzina	diesel	benzina	diesel	benzina
January	3 028	1 448	67.4%	32.2%	2 364	1 480	28.1%	-2.2%
February	-	-	-	-	3 208	1 885	-	-
March	-	-	-	-	3 757	2 575	-	-
April	-	-	-	-	3 762	2 983	-	-
May	-	-	-	-	3 883	4 173	-	-
June	-	-	-	-	4 853	4 251	-	-
July	-	-	-	-	4 297	4 257	-	-
August	-	-	-	-	3 264	2 686	-	-
September	-	-	-	-	4 546	3 005	-	-
October	-	-	-	-	4 147	3 271	-	-
November	-	-	-	-	4 541	3 130	-	-
December	-	-	-	-	4 146	2 108	-	-
<b>Total</b>	<b>3 028</b>	<b>1 448</b>	<b>67.4%</b>	<b>32.2%</b>	<b>2 364</b>	<b>1 480</b>	<b>28.1%</b>	<b>-2.2%</b>


**Top 10 Autoturisme in functie de tipul de alimentare - marci / Top 10 passenger car sales by fuel type and make**
**Top 10 diesel - marci**

MARCA	Ianuarie 2015	Pondere %	variatie an precedent %	Pondere diesel/total
DACIA	875	28.9%	27.9%	65.0%
SKODA	398	13.1%	59.8%	76.8%
VOLKSWAGEN	308	10.2%	19.4%	67.5%
RENAULT	234	7.7%	85.7%	86.0%
FORD	211	7.0%	-35.5%	65.1%
OPEL	149	4.9%	129.2%	59.4%
MERCEDES BENZ *)	99	3.3%	19.3%	90.0%
SEAT	78	2.6%	200.0%	70.9%
BMW	77	2.5%	40.0%	97.5%
KIA	69	2.3%	1280.0%	61.1%
Rest	530	17.5%	9.1%	58.0%
<b>TOTAL</b>	<b>3028</b>	<b>100%</b>	<b>28.1%</b>	<b>67.4%</b>

\*) Estimari APIA / APIA Estimates

**Top 10 benzina - marci**

MARCA	Ianuarie 2015	Pondere %	variatie an precedent %	Pondere benzina/total
DACIA	471	32.5%	35.7%	35.0%
VOLKSWAGEN	147	10.2%	-2.6%	32.2%
SKODA	120	8.3%	-32.2%	23.2%
FORD	113	7.8%	37.8%	34.9%
OPEL	102	7.0%	-27.1%	40.6%
HYUNDAI	95	6.6%	39.7%	66.9%
TOYOTA	57	3.9%	-35.2%	49.1%
FIAT	46	3.2%	58.6%	40.4%
KIA	44	3.0%	57.1%	38.9%
SUZUKI	43	3.0%	-38.6%	100.0%
Rest	210	14.5%	-30.0%	19.6%
<b>TOTAL</b>	<b>1448</b>	<b>100%</b>	<b>-2.2%</b>	<b>32.2%</b>

\*) Estimari APIA / APIA Estimates

**Top 10 Autoturisme in functie de tipul de alimentare - modele / Top 10 passenger car sales by fuel type and model**
**Top 10 diesel - model**

MODEL	Ianuarie 2015	Pondere %	Variatie an precedent %	Pondere diesel/total
DACIA DUSTER	395	13.0%	52.5%	91.6%
SKODA OCTAVIA	245	8.1%	61.2%	85.7%
DACIA LOGAN	240	7.9%	31.9%	50.8%
DACIA LOGAN MCV	148	4.9%	66.3%	64.9%
RENAULT CAPTUR	95	3.1%	352.4%	91.3%
SKODA RAPID	95	3.1%	375.0%	69.9%
VOLKSWAGEN GOLF	89	2.9%	-20.5%	73.0%
VOLKSWAGEN PASSAT	83	2.7%	69.4%	98.8%
SEAT LEON	73	2.4%	305.6%	78.5%
FORD FOCUS	70	2.3%	-45.3%	63.1%
Rest	1495	49.4%	12.1%	61.6%
<b>TOTAL</b>	<b>3028</b>	<b>100%</b>	<b>28.1%</b>	<b>67.4%</b>

\*) Estimari APIA / APIA Estimates

**Top 10 benzina - model**

MODEL	Ianuarie 2015	Pondere %	Variatie an precedent %	Pondere benzina/total
DACIA LOGAN	232	16.0%	393.6%	49.2%
DACIA SANDERO	109	7.5%	-12.8%	68.6%
DACIA LOGAN MCV	80	5.5%	63.3%	35.1%
VOLKSWAGEN POLO	59	4.1%	40.5%	72.8%
OPEL CORSA	55	3.8%	-19.1%	88.7%
HYUNDAI I20	52	3.6%	57.6%	100.0%
FORD FIESTA	46	3.2%	130.0%	54.1%
SKODA RAPID	41	2.8%	-41.4%	30.1%
SKODA OCTAVIA	41	2.8%	-28.1%	14.3%
FORD FOCUS	41	2.8%	7.9%	36.9%
Rest	692	47.8%	-25.7%	24.5%
<b>TOTAL</b>	<b>1448</b>	<b>100%</b>	<b>-2.2%</b>	<b>32.2%</b>

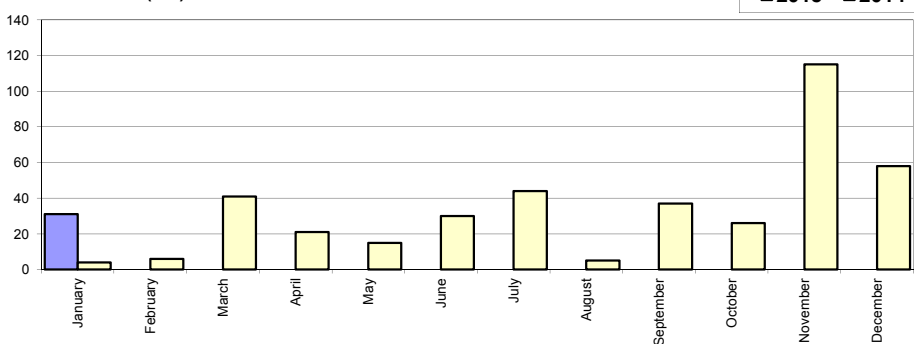
\*) Estimari APIA / APIA Estimates

## Livri comerciale usoare + minibus autohtone / Domestic LCV + minibus sales

Luna/An	2015	2014	Variatie
January	31	4	675.0%
February	-	6	-
March	-	41	-
April	-	21	-
May	-	15	-
June	-	30	-
July	-	44	-
August	-	5	-
September	-	37	-
October	-	26	-
November	-	115	-
December	-	58	-
<b>Total</b>	<b>31</b>	<b>4</b>	<b>-</b>

402

Livri autohtone (buc)

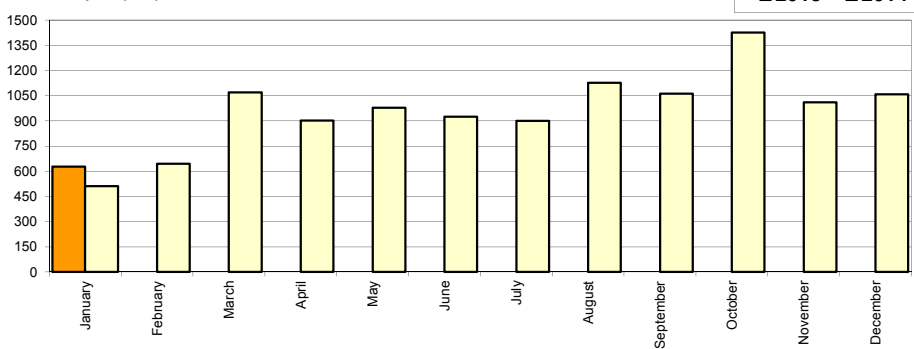


## Livri comerciale usoare + minibus import / Imported LCV + minibus sales

Luna/An	2015	2014	Variatie
January	628	511	22.9%
February	-	645	-
March	-	1 069	-
April	-	903	-
May	-	978	-
June	-	925	-
July	-	900	-
August	-	1 128	-
September	-	1 063	-
October	-	1 426	-
November	-	1 011	-
December	-	1 058	-
<b>Total</b>	<b>628</b>	<b>511</b>	<b>22.9%</b>

11 617

Livri import (buc)

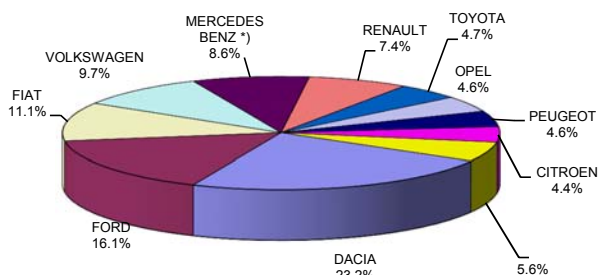


## Livri comerciale &lt;3.5t si minibus - marci / LCV + minibus sales by make

MARCA	Ianuarie		Variatie Decembrie		2015		Variatie 2014	
	pozitie	unitati	pozitie	procent	pozitie	unitati	pozitie	procent
DACIA	1	153	1	-44.2%	1	153	6	247.7%
FORD	2	106	2	-42.7%	2	106	1	0.0%
FIAT	3	73	5	-18.9%	3	73	7	97.3%
VOLKSWAGEN	4	64	3	-62.8%	4	64	2	-3.0%
MERCEDES BENZ *)	5	57	4	-63.5%	5	57	3	1.8%
RENAULT	6	49	7	-17.0%	6	49	4	-9.3%
TOYOTA	7	31	11	106.7%	7	31	9	55.0%
OPEL	8	30	12	172.7%	8	30	11	87.5%
PEUGEOT	9	30	8	-33.3%	9	30	5	-42.3%
CITROEN	10	29	6	-53.2%	10	29	8	26.1%
Rest		37		-21.3%		37		-9.8%
<b>TOTAL</b>		<b>659</b>		<b>-41.0%</b>		<b>659</b>		<b>28.0%</b>

\*) Estimari APIA / APIA Estimates

Vanzari com &lt;3.5t si minibus - marci - 2015



## Livri comerciale &lt;3.5t si minibus - modele / LCV + minibus sales by model

MODEL	Ianuarie		Variatie Decembrie		2015		Variatie 2014	
	pozitie	unitati	pozitie	procent	pozitie	unitati	pozitie	procent
DACIA DOKKER VAN	1	122	1	-43.5%	1	122	3	205.0%
FIAT DUCATO	2	48	4	-31.4%	2	48	6	84.6%
FORD TRANSIT	3	43	2	-54.7%	3	43	1	-18.9%
TOYOTA HI-LUX	4	31	22	121.4%	4	31	10	72.2%
RENAULT MASTER	5	29	12	-9.4%	5	29	7	26.1%
DACIA DUSTER VU	6	28	9	-30.0%	6	28	-	-
CITROEN JUMPER	7	28	13	3.7%	7	28	8	33.3%
M B *) SPRINTER	8	26	3	-70.1%	8	26	15	85.7%
PEUGEOT BOXER	9	24	10	-36.8%	9	24	2	-50.0%
FIAT DOBLO CARGO	10	22	17	15.8%	10	22	24	266.7%
Rest		258		-46.0%		258		-3.0%
<b>TOTAL</b>		<b>659</b>		<b>-41.0%</b>		<b>659</b>		<b>28.0%</b>

\*) Estimari APIA / APIA Estimates

Vanzari com &lt;3.5t si minibus - modele - 2015

