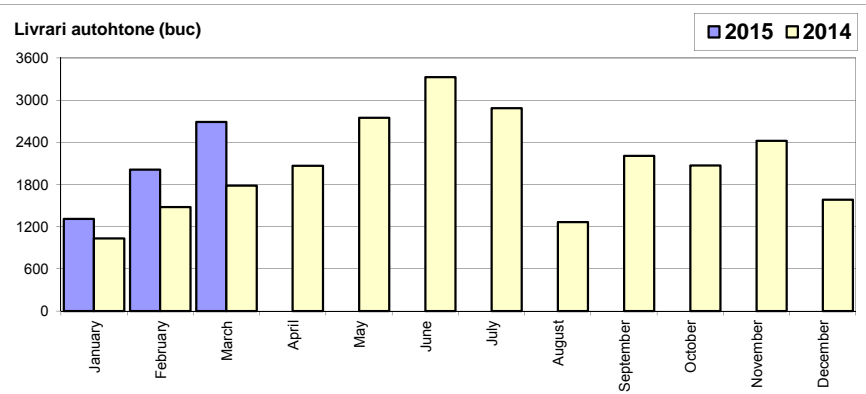


Livri autoturisme autohtone / Domestic passenger car sales

Luna/An	2015	2014	Variatie
January	1 310	1 034	26.7%
February	2 012	1 481	35.9%
March	2 689	1 785	50.6%
April	-	2 067	-
May	-	2 749	-
June	-	3 326	-
July	-	2 885	-
August	-	1 265	-
September	-	2 209	-
October	-	2 069	-
November	-	2 423	-
December	-	1 582	-
Total	6 011	4 300	39.8%

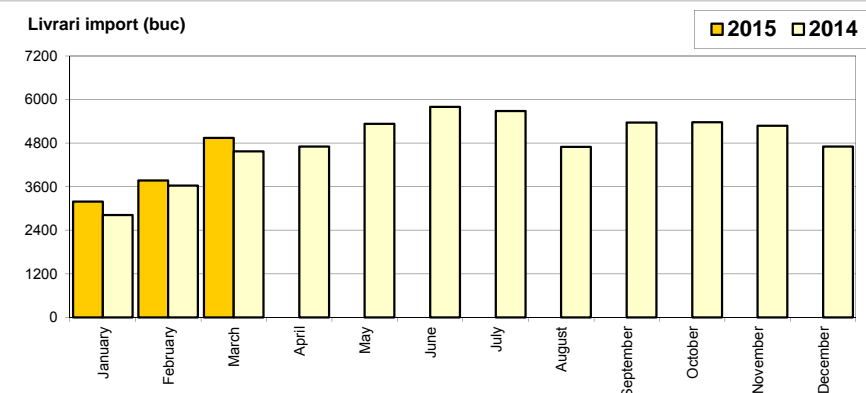
24 875



Livri autoturisme import / Imported passenger car sales

Luna/An	2015	2014	Variatie
January	3 183	2 821	12.8%
February	3 769	3 627	3.9%
March	4 937	4 572	8.0%
April	-	4 701	-
May	-	5 330	-
June	-	5 797	-
July	-	5 682	-
August	-	4 694	-
September	-	5 361	-
October	-	5 374	-
November	-	5 272	-
December	-	4 702	-
Total	11 889	11 020	7.9%

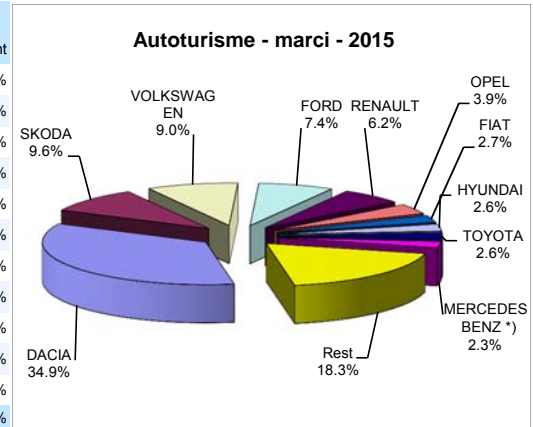
57 933



Top livri autoturisme - marci / Passenger car top - by make

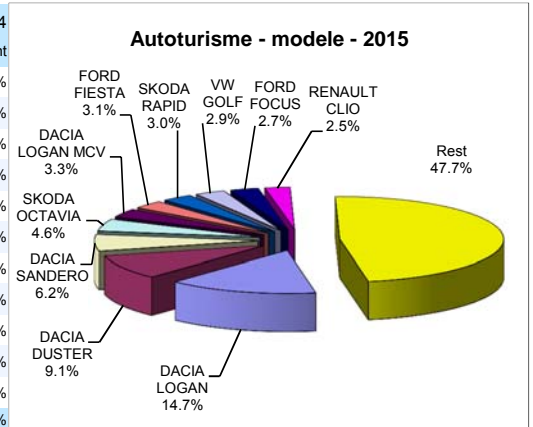
MARCA	Martie		Variatie Februarie		2015		Variatie2014	
	pozitie	unitati	pozitie	procent	pozitie	unitati	pozitie	procent
DACIA	1	2808	1	34.0%	1	6249	1	32.3%
SKODA	4	601	2	-2.4%	2	1735	3	14.0%
VOLKSWAGEN	3	608	3	10.1%	3	1616	2	5.4%
FORD	2	688	5	111.0%	4	1338	4	16.4%
RENAULT	5	519	4	58.7%	5	1118	5	42.1%
OPEL	6	259	6	37.0%	6	699	6	8.9%
FIAT	7	215	8	35.2%	7	488	13	60.5%
HYUNDAI	10	172	7	6.8%	8	475	9	18.5%
TOYOTA	9	204	9	32.5%	9	474	7	-13.4%
MERCEDES BENZ *)	11	171	10	22.1%	10	421	11	20.3%
Rest		1381		30.0%		3287		-2.2%
TOTAL		7626		31.9%		17900		16.8%

*) Estimari APIA / APIA Estimates



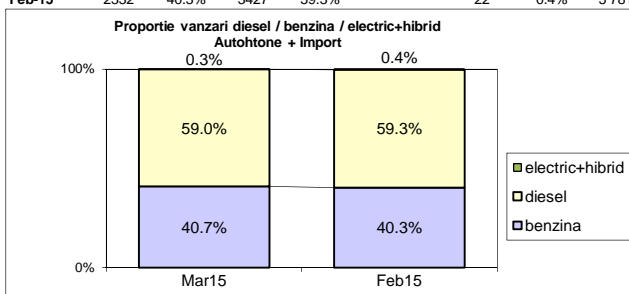
Top livri autoturisme - modele / Passenger car top - by model

MODEL	Martie		Variatie Februarie		2015		Variatie2014	
	pozitie	unitati	pozitie	procent	pozitie	unitati	pozitie	procent
DACIA LOGAN	1	1300	1	49.9%	1	2639	1	66.6%
DACIA DUSTER	2	727	3	52.4%	2	1635	3	53.0%
DACIA SANDERO	3	467	2	-4.3%	3	1114	2	4.0%
SKODA OCTAVIA	5	292	4	20.7%	4	820	4	3.7%
DACIA LOGAN MCV	10	185	7	5.1%	5	589	6	14.2%
FORD FIESTA	4	334	9	151.1%	6	552	7	22.4%
SKODA RAPID	9	188	6	-14.9%	7	545	10	58.4%
VOLKSWAGEN GOLF	11	182	5	-20.5%	8	533	5	-23.3%
FORD FOCUS	6	263	10	115.6%	9	496	9	19.2%
RENAULT CLIO	8	191	8	15.1%	10	444	11	38.8%
Rest		3497		31.5%		8533		5.8%
TOTAL		7626		31.9%		17900		16.8%

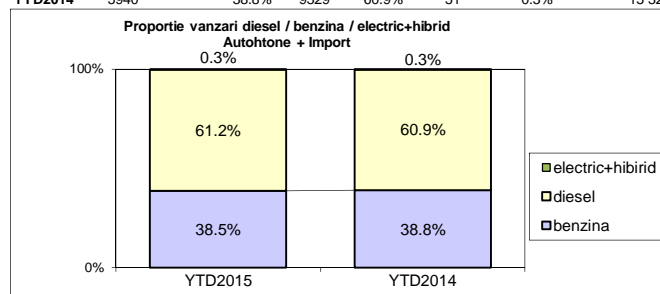


Segmentare dupa tipul de combustibil / Segmentation by type of fuel
Autohtone + Import / Domestic + Imported

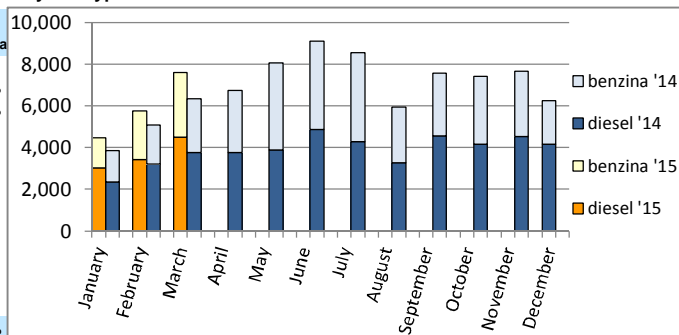
	benzina		diesel		electric+hibrid		total
Mar-15	3105	40.7%	4501	59.0%	20	0.3%	7 626
Feb-15	2332	40.3%	3427	59.3%	22	0.4%	5 781



	benzina		diesel		electric+hibrid		total
YTD2015	6884	38.5%	10957	61.2%	59	0.3%	17 900
YTD2014	5940	38.8%	9329	60.9%	51	0.3%	15 320


Livrari autoturisme in functie de tipul de combustibil / Passenger car sales by fuel type

Luna/An	2015		Pondere		2014		Variatie 15/14	
	diesel	benzina	diesel	benzina	diesel	benzina	diesel	benzina
January	3 029	1 447	67.4%	32.2%	2 364	1 480	28.1%	-2.2%
February	3 427	2 332	59.3%	40.3%	3 208	1 885	6.8%	23.7%
March	4 501	3 105	59.0%	40.7%	3 757	2 575	19.8%	20.6%
April	-	-	-	-	3 762	2 983	-	-
May	-	-	-	-	3 883	4 173	-	-
June	-	-	-	-	4 853	4 251	-	-
July	-	-	-	-	4 297	4 257	-	-
August	-	-	-	-	3 264	2 686	-	-
September	-	-	-	-	4 546	3 005	-	-
October	-	-	-	-	4 147	3 271	-	-
November	-	-	-	-	4 541	3 130	-	-
December	-	-	-	-	4 150	2 104	-	-
Total	10 957	6 884	61.2%	38.5%	9 329	5 940	17.5%	15.9%


Top 10 Autoturisme in functie de tipul de alimentare - marci / Top 10 passenger car sales by fuel type and make
Top 10 diesel - marci

MARCA	Martie 2015	3 luni 2015	Pondere %	Variatie an precedent %	Pondere diesel/total
DACIA	1214	3178	29.0%	20.9%	50.9%
SKODA	412	1232	11.2%	21.9%	71.0%
FORD	586	1043	9.5%	16.5%	78.0%
VOLKSWAGEN	404	1039	9.5%	-0.3%	64.3%
RENAULT	369	856	7.8%	43.4%	76.6%
OPEL	141	396	3.6%	43.0%	56.7%
MERCEDES BENZ *)	127	357	3.3%	11.2%	84.8%
BMW	153	336	3.1%	31.3%	95.5%
NISSAN	178	279	2.5%	125.0%	76.4%
AUDI	117	261	2.4%	-6.5%	86.7%
Rest	800	1980	18.1%	4.3%	53.4%
TOTAL	4501	10957	100%	17.5%	61.2%

*) Estimari APIA / APIA Estimates

Top 10 benzina - marci

MARCA	Martie 2015	3 luni 2015	Pondere %	Variatie an precedent %	Pondere benzina/total
DACIA	1594	3071	44.6%	46.7%	49.1%
VOLKSWAGEN	204	576	8.4%	17.3%	35.6%
SKODA	189	503	7.3%	-1.6%	29.0%
OPEL	118	303	4.4%	-17.0%	43.3%
HYUNDAI	100	302	4.4%	37.3%	63.6%
FIAT	128	299	4.3%	107.6%	61.3%
FORD	102	295	4.3%	15.7%	22.0%
TOYOTA	140	287	4.2%	-5.3%	60.5%
RENAULT	150	262	3.8%	37.9%	23.4%
KIA	49	153	2.2%	80.0%	40.8%
Rest	331	833	12.1%	-35.0%	25.0%
TOTAL	3105	6884	100%	15.9%	38.5%

*) Estimari APIA / APIA Estimates

Top 10 Autoturisme in functie de tipul de alimentare - modele / Top 10 passenger car sales by fuel type and model
Top 10 diesel - model

MODEL	Martie 2015	3 luni 2015	Pondere %	Variatie an precedent %	Pondere diesel/total
DACIA DUSTER	559	1375	12.5%	71.2%	84.1%
DACIA LOGAN	288	831	7.6%	22.2%	31.5%
SKODA OCTAVIA	217	677	6.2%	10.1%	82.6%
FORD FIESTA	301	447	4.1%	23.5%	81.0%
DACIA LOGAN MCV	130	405	3.7%	28.2%	68.8%
VOLKSWAGEN GOLF	156	371	3.4%	-21.7%	69.6%
FORD FOCUS	215	363	3.3%	14.9%	73.2%
RENAULT CAPTUR	187	351	3.2%	80.9%	83.6%
DACIA SANDERO	137	349	3.2%	-15.5%	31.3%
SKODA RAPID	124	326	3.0%	123.3%	59.8%
Rest	2187	5462	49.8%	9.0%	63.8%
TOTAL	4501	10957	100%	17.5%	61.2%

*) Estimari APIA / APIA Estimates

Top 10 benzina - model

MODEL	Martie 2015	3 luni 2015	Pondere %	Variatie an precedent %	Pondere benzina/total
DACIA LOGAN	1012	1808	26.3%	100.0%	68.5%
DACIA SANDERO	330	765	11.1%	16.3%	68.7%
DACIA DUSTER	168	260	3.8%	-2.3%	15.9%
SKODA RAPID	64	219	3.2%	10.6%	40.2%
FIAT 500	88	207	3.0%	132.6%	93.2%
VOLKSWAGEN POLO	81	191	2.8%	36.4%	83.4%
DACIA LOGAN MCV	55	184	2.7%	-8.0%	31.2%
HYUNDAI I20	55	179	2.6%	179.7%	91.3%
VOLKSWAGEN GOLF	26	162	2.4%	-26.7%	30.4%
SKODA OCTAVIA	75	143	2.1%	-18.8%	17.4%
Rest	1151	2766	40.2%	-8.5%	29.5%
TOTAL	3105	6884	100%	15.9%	38.5%

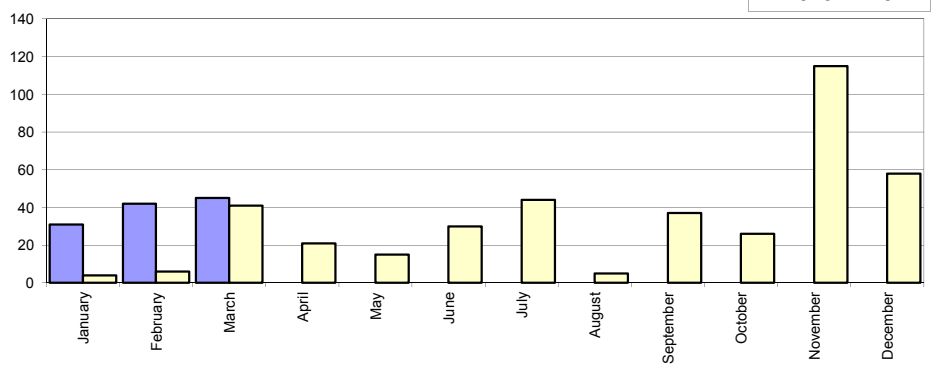
*) Estimari APIA / APIA Estimates

Livrarile comerciale usoare + minibus autohtone / Domestic LCV + minibus sales

Luna/An	2015	2014	Variatie
January	31	4	675.0%
February	42	6	600.0%
March	45	41	9.8%
April	-	21	-
May	-	15	-
June	-	30	-
July	-	44	-
August	-	5	-
September	-	37	-
October	-	26	-
November	-	115	-
December	-	58	-
Total	118	51	131.4%

402

Livrarile autohtone (buc)

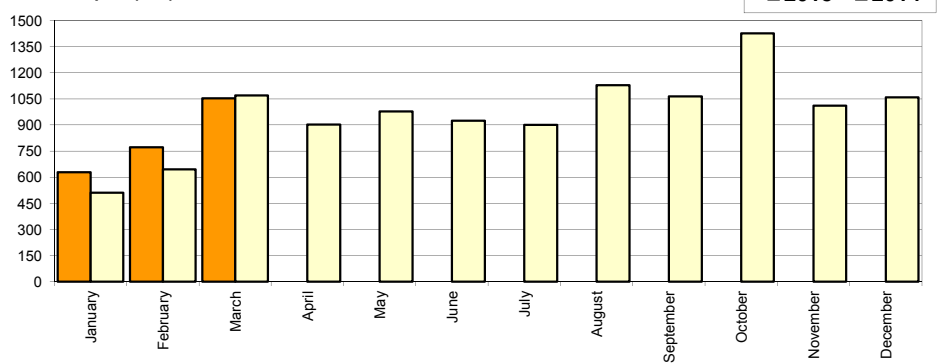


Livrarile comerciale usoare + minibus import / Imported LCV + minibus sales

Luna/An	2015	2014	Variatie
January	628	511	22.9%
February	772	645	19.7%
March	1 053	1 069	-1.5%
April	-	903	-
May	-	978	-
June	-	925	-
July	-	900	-
August	-	1 128	-
September	-	1 063	-
October	-	1 426	-
November	-	1 011	-
December	-	1 058	-
Total	2 453	2 225	10.2%

11 617

Livrarile import (buc)

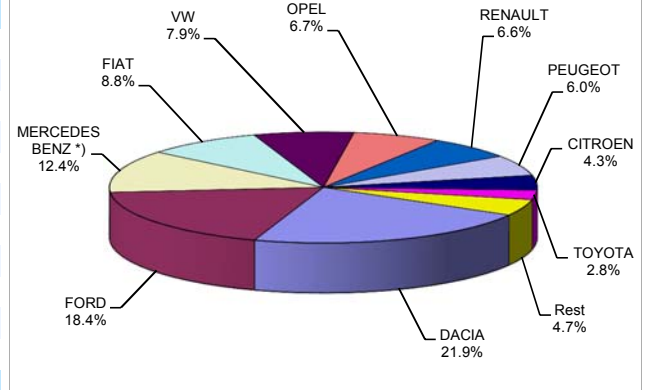


Livrarile comerciale <3.5t si minibus - martie / LCV + minibus sales by make

MARCA	Martie		Variatie Februarie		2015		Variatie2014	
	pozitie	unitati	pozitie	procent	pozitie	unitati	pozitie	procent
DACIA	1	216	1	11.9%	1	562	1	37.4%
FORD	2	207	2	30.2%	2	472	2	32.6%
MERCEDES BENZ *)	3	131	3	0.8%	3	318	3	14.8%
FIAT	5	82	4	13.9%	4	227	5	21.4%
VOLKSWAGEN	6	77	6	45.3%	5	194	6	11.5%
OPEL	4	126	10	740.0%	6	171	13	297.7%
RENAULT	8	67	5	26.4%	7	169	4	-39.0%
PEUGEOT	7	74	7	48.0%	8	154	7	0.7%
CITROEN	9	45	8	25.0%	9	110	8	-18.5%
TOYOTA	10	29	11	141.7%	10	72	11	16.1%
Rest		44		7.3%		122		-39.9%
TOTAL		1098		34.9%		2571		13.0%

*) Estimari APIA / APIA Estimates

Vanzari com <3.5t si minibus - marci - 2015



Livrarile comerciale <3.5t si minibus - modele / LCV + minibus sales by model

MODEL	Martie		Variatie Februarie		2015		Variatie2014	
	pozitie	unitati	pozitie	procent	pozitie	unitati	pozitie	procent
DACIA DOKKER VAN	1	171	1	13.3%	1	444	1	24.0%
FORD TRANSIT	2	140	4	204.4%	2	229	2	-6.2%
FIAT DUCATO	5	61	3	27.1%	3	157	4	17.2%
M.B. *) SPRINTER	4	70	2	16.7%	4	156	3	0.0%
OPEL MOVANO	3	115	27	-	5	130	38	-
RENAULT MASTER	6	54	6	35.0%	6	123	6	0.0%
DACIA DUSTER VU	8	43	7	10.3%	7	110	20	214.3%
PEUGEOT BOXER	7	50	11	61.3%	8	105	5	-19.9%
CITROEN JUMPER	9	42	12	61.5%	9	96	7	-11.9%
M.B. *) SPRINTER BUS	10	35	5	-12.5%	10	85	14	70.0%
Rest		317		-3.1%		936		0.6%
TOTAL		1098		34.9%		2571		13.0%

*) Estimari APIA / APIA Estimates

Vanzari com <3.5t si minibus - modele - 2015

