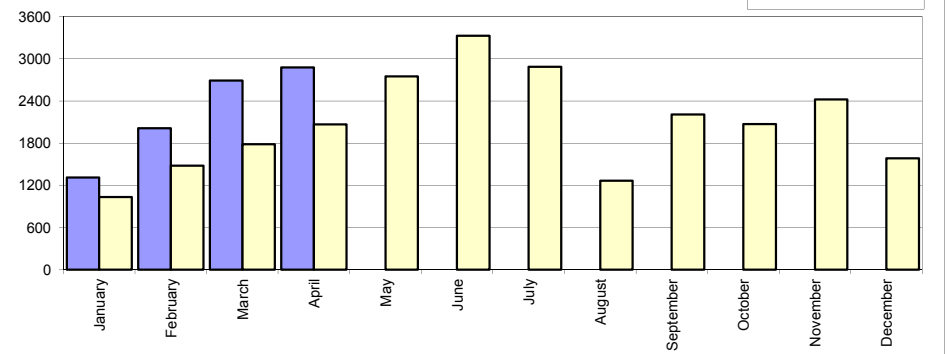


Livrari autoturisme autohtone / Domestic passenger car sales

Luna/An	2015	2014	Variatie
January	1 310	1 034	26.7%
February	2 012	1 481	35.9%
March	2 689	1 785	50.6%
April	2 878	2 067	39.2%
May	-	2 749	-
June	-	3 326	-
July	-	2 885	-
August	-	1 265	-
September	-	2 209	-
October	-	2 069	-
November	-	2 423	-
December	-	1 582	-
Total	8 889	6 367	39.6%

24 875

Livrari autohtone (buc)

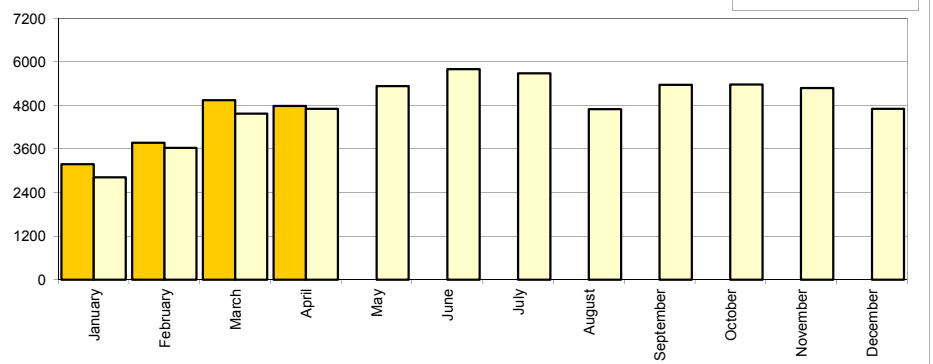


Livrari autoturisme import / Imported passenger car sales

Luna/An	2015	2014	Variatie
January	3 183	2 821	12.8%
February	3 769	3 627	3.9%
March	4 937	4 572	8.0%
April	4 786	4 701	1.8%
May	-	5 330	-
June	-	5 797	-
July	-	5 682	-
August	-	4 694	-
September	-	5 361	-
October	-	5 374	-
November	-	5 272	-
December	-	4 702	-
Total	16 675	15 721	6.1%

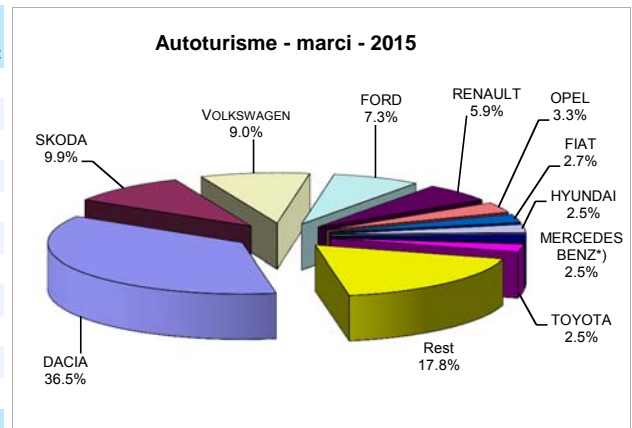
57 933

Livrari import (buc)



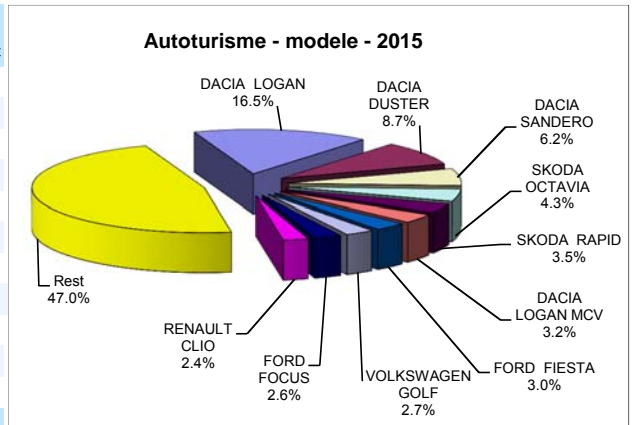
Top livrari autoturisme - marci / Passenger car top - by make

MARCA	Aprilie		Variatie Martie		2015		Variatie2014	
	pozitie	unitati	pozitie	procent	pozitie	unitati	pozitie	procent
DACIA	1	3094	1	10.2%	1	9343	1	34.6%
SKODA	2	787	4	31.0%	2	2522	3	17.4%
VOLKSWAGEN	3	696	3	14.5%	3	2312	2	5.6%
FORD	4	529	2	-23.1%	4	1867	4	24.5%
RENAULT	5	401	5	-22.7%	5	1519	5	14.3%
OPEL	12	148	6	-42.9%	6	847	6	-6.7%
FIAT	7	199	7	-7.4%	7	687	14	78.9%
HYUNDAI	8	171	10	-0.6%	8	646	9	-3.2%
MERCEDES BENZ *)	6	215	11	25.7%	9	636	10	21.6%
TOYOTA	9	162	9	-20.6%	10	636	7	-17.5%
Rest		1262		-8.6%		4549		-3.8%
TOTAL		7664		0.5%		25564		15.7%



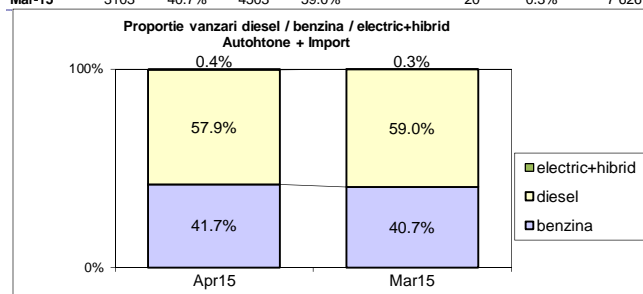
Top livrari autoturisme - modele / Passenger car top - by model

MODEL	Aprilie		Variatie Martie		2015		Variatie2014	
	pozitie	unitati	pozitie	procent	pozitie	unitati	pozitie	procent
DACIA LOGAN	1	1585	1	21.9%	1	4224	1	68.8%
DACIA DUSTER	2	593	2	-18.4%	2	2228	3	51.0%
DACIA SANDERO	3	461	3	-1.3%	3	1575	2	-2.4%
SKODA OCTAVIA	5	292	5	0.0%	4	1112	4	2.4%
SKODA RAPID	4	337	9	79.3%	5	882	8	55.6%
DACIA LOGAN MCV	6	232	10	25.4%	6	821	6	17.3%
FORD FIESTA	7	213	4	-36.2%	7	765	7	33.7%
VOLKSWAGEN GOLF	11	151	11	-17.0%	8	684	5	-28.2%
FORD FOCUS	8	165	6	-37.3%	9	661	9	21.7%
RENAULT CLIO	9	162	8	-15.2%	10	606	11	26.8%
Rest		3473		-0.7%		12006		3.5%
TOTAL		7664		0.5%		25564		15.7%

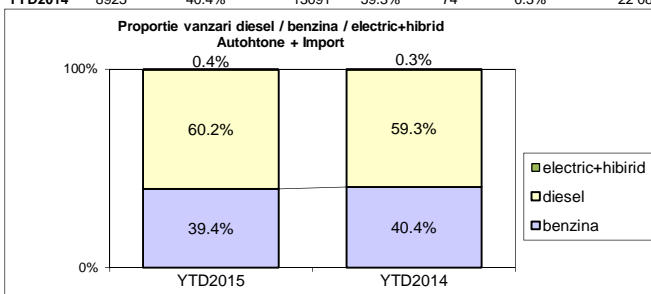


Segmentare dupa tipul de combustibil / Segmentation by type of fuel
Autohtone + Import / Domestic + Imported

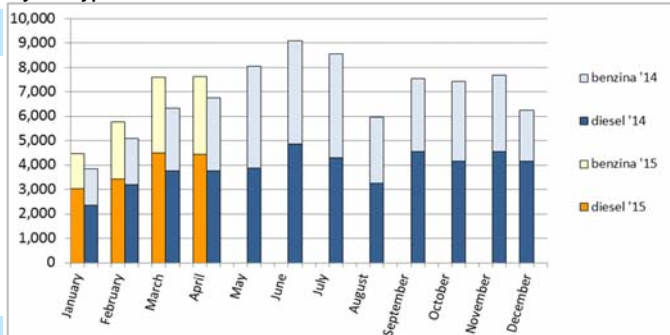
	benzina	diesel	electric+hibrid	total			
Apr-15	3194	41.7%	4437	57.9%	33	0.4%	7 664
Mar-15	3103	40.7%	4503	59.0%	20	0.3%	7 626



	benzina	diesel	electric+hibrid	total			
YTD2015	10076	39.4%	15396	60.2%	92	0.4%	25 564
YTD2014	8923	40.4%	13091	59.3%	74	0.3%	22 088


Livrari autoturisme in functie de tipul de combustibil / Passenger car sales by fuel type

Luna/An	2015		Pondere		2014		Variatie 15/14	
	diesel	benzina	diesel	benzina	diesel	benzina	diesel	benzina
January	3 029	1 447	67.4%	32.2%	2 364	1 480	28.1%	-2.2%
February	3 427	2 332	59.3%	40.3%	3 208	1 885	6.8%	23.7%
March	4 503	3 103	59.0%	40.7%	3 757	2 575	19.9%	20.5%
April	4 437	3 194	57.9%	41.7%	3 762	2 983	17.9%	7.1%
May	-	-	-	-	3 883	4 173	-	-
June	-	-	-	-	4 853	4 251	-	-
July	-	-	-	-	4 297	4 257	-	-
August	-	-	-	-	3 264	2 686	-	-
September	-	-	-	-	4 546	3 005	-	-
October	-	-	-	-	4 147	3 271	-	-
November	-	-	-	-	4 541	3 130	-	-
December	-	-	-	-	4 150	2 104	-	-
Total	15 396	10 076	60.2%	39.4%	13 091	8 923	17.6%	12.9%


Top 10 Autoturisme in functie de tipul de alimentare - marci / Top 10 passenger car sales by fuel type and make
Top 10 diesel - marci

MARCA	Aprilie 2015	4 luni 2015	Pondere %	Variatie an precedent %	Pondere diesel/total
DACIA	1338	4516	29.3%	21.4%	48.3%
SKODA	595	1827	11.9%	28.8%	72.4%
VOLKSWAGEN	472	1511	9.8%	3.2%	65.4%
FORD	400	1443	9.4%	36.1%	77.3%
RENAULT	264	1120	7.3%	18.4%	73.7%
MERCEDES BENZ *)	181	538	3.5%	11.9%	84.6%
BMW	128	464	3.0%	33.7%	94.1%
OPEL	65	461	3.0%	19.1%	54.4%
NISSAN	124	403	2.6%	102.5%	77.6%
AUDI	130	393	2.6%	0.3%	85.2%
Rest	740	2720	17.7%	1.6%	53.9%
TOTAL	4437	15396	100%	17.6%	60.2%

*) Estimari APIA / APIA Estimates

Top 10 benzina - marci

MARCA	Aprilie 2015	4 luni 2015	Pondere %	Variatie an precedent %	Pondere benzina/total
DACIA	1756	4827	47.9%	49.9%	51.7%
VOLKSWAGEN	224	800	7.9%	10.3%	34.6%
SKODA	192	695	6.9%	-4.8%	27.6%
FORD	129	424	4.2%	-3.6%	22.7%
HYUNDAI	104	406	4.0%	1.5%	62.8%
FIAT	101	400	4.0%	100.0%	58.2%
RENAULT	137	399	4.0%	4.2%	26.3%
TOYOTA	100	387	3.8%	-7.4%	60.8%
OPEL	82	385	3.8%	-26.1%	45.5%
KIA	40	193	1.9%	72.3%	41.4%
Rest	329	1160	11.5%	-34.6%	24.6%
TOTAL	3194	10076	100%	12.9%	39.4%

*) Estimari APIA / APIA Estimates

Top 10 Autoturisme in functie de tipul de alimentare - modele / Top 10 passenger car sales by fuel type and model
Top 10 diesel - model

MODEL	Aprilie 2015	4 luni 2015	Pondere %	Variatie an precedent %	Pondere diesel/total
DACIA DUSTER	560	1935	12.6%	71.7%	86.8%
DACIA LOGAN	277	1108	7.2%	15.3%	26.2%
SKODA OCTAVIA	254	931	6.0%	6.5%	83.7%
FORD FIESTA	164	611	4.0%	45.5%	79.9%
SKODA RAPID	241	567	3.7%	166.2%	64.3%
DACIA LOGAN MCV	137	542	3.5%	17.3%	66.0%
DACIA SANDERO	167	516	3.4%	-17.0%	32.8%
VOLKSWAGEN GOLF	120	491	3.2%	-19.6%	71.8%
FORD FOCUS	104	467	3.0%	31.2%	70.7%
RENAULT CAPTUR	101	452	2.9%	25.2%	81.1%
Rest	2312	7776	50.5%	9.8%	64.5%
TOTAL	4437	15396	100%	17.6%	60.2%

*) Estimari APIA / APIA Estimates

Top 10 benzina - model

MODEL	Aprilie 2015	4 luni 2015	Pondere %	Variatie an precedent %	Pondere benzina/total
DACIA LOGAN	1308	3116	30.9%	102.2%	73.8%
DACIA SANDERO	294	1059	10.5%	6.8%	67.2%
SKODA RAPID	96	315	3.1%	-11.0%	35.7%
DACIA DUSTER	33	293	2.9%	-16.0%	13.2%
VOLKSWAGEN POLO	101	292	2.9%	43.1%	80.9%
DACIA LOGAN MCV	95	279	2.8%	17.2%	34.0%
FIAT 500	62	269	2.7%	100.7%	94.7%
HYUNDAI I20	49	228	2.3%	61.7%	88.7%
FORD FOCUS	61	194	1.9%	3.7%	29.3%
VOLKSWAGEN GOLF	31	193	1.9%	-43.6%	28.2%
Rest	1064	3838	38.1%	-13.6%	28.2%
TOTAL	3194	10076	100%	12.9%	39.4%

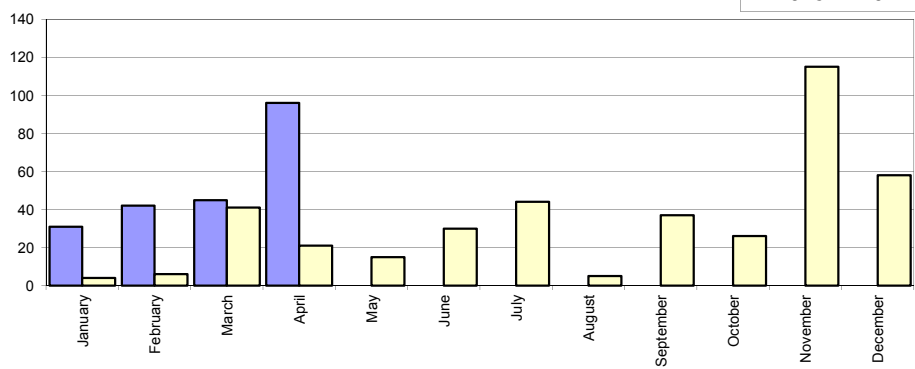
*) Estimari APIA / APIA Estimates

Livrari comerciale usoare + minibus autohtone / Domestic LCV + minibus sales

Luna/An	2015	2014	Variatie
January	31	4	675.0%
February	42	6	600.0%
March	45	41	9.8%
April	96	21	357.1%
May	-	15	-
June	-	30	-
July	-	44	-
August	-	5	-
September	-	37	-
October	-	26	-
November	-	115	-
December	-	58	-
Total	214	72	197.2%

402

Livrari autohtone (buc)

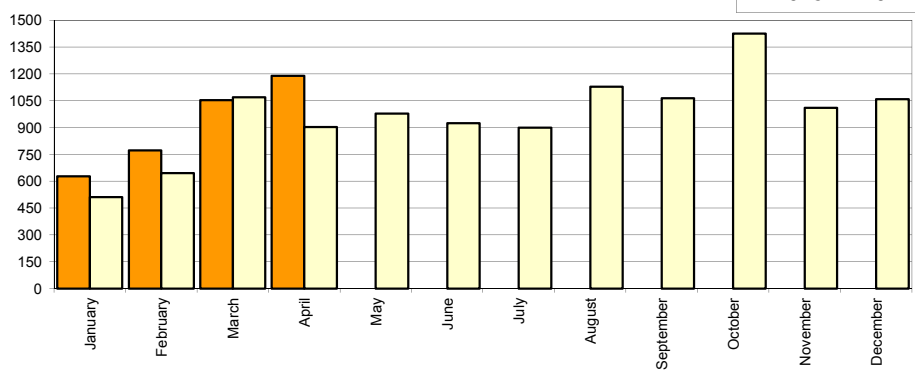


Livrari comerciale usoare + minibus import / Imported LCV + minibus sales

Luna/An	2015	2014	Variatie
January	628	511	22.9%
February	772	645	19.7%
March	1 053	1 069	-1.5%
April	1 189	903	31.7%
May	-	978	-
June	-	925	-
July	-	900	-
August	-	1 128	-
September	-	1 063	-
October	-	1 426	-
November	-	1 011	-
December	-	1 058	-
Total	3 642	3 128	16.4%

11 617

Livrari import (buc)

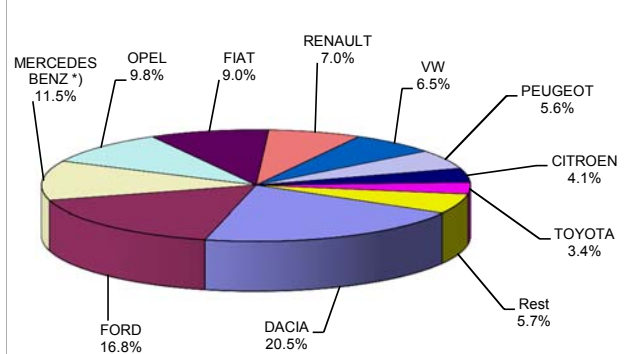


Livrari comerciale <3.5t si minibus - marci / LCV + minibus sales by make

MARCA	Aprilie		Variatie Martie		2015		Variatie2014	
	pozitie	unitati	pozitie	procent	pozitie	unitati	pozitie	procent
DACIA	1	228	1	5.6%	1	790	1	27.6%
FORD	3	175	2	-15.5%	2	647	2	48.4%
MERCEDES BENZ *)	4	126	3	-3.8%	3	444	3	5.5%
OPEL	2	208	4	65.1%	4	379	12	441.4%
FIAT	5	120	5	46.3%	5	347	6	30.0%
RENAULT	6	102	8	52.2%	6	271	4	-26.2%
VOLKSWAGEN	9	58	6	-24.7%	7	252	5	-7.0%
PEUGEOT	8	62	7	-16.2%	8	216	7	6.9%
CITROEN	11	49	9	8.9%	9	159	8	-20.9%
TOYOTA	10	58	10	100.0%	10	130	11	75.7%
Rest		99		125.0%		221		-18.8%
TOTAL		1285		17.0%		3856		20.5%

*) Estimari APIA / APIA Estimates

Vanzari com <3.5t si minibus - marci - 2015



Livrari comerciale <3.5t si minibus - modele / LCV + minibus sales by model

MODEL	Aprilie		Variatie Martie		2015		Variatie2014	
	pozitie	unitati	pozitie	procent	pozitie	unitati	pozitie	procent
DACIA DOKKER VAN	2	132	1	-22.8%	1	576	1	5.3%
FORD TRANSIT	3	118	2	-15.7%	2	347	2	16.1%
OPEL MOVANO	1	204	3	77.4%	3	334	38	4075.0%
FIAT DUCATO	4	110	5	80.3%	4	267	4	43.6%
MERCEDES BENZ *) SF	6	78	4	11.4%	5	234	3	-1.7%
DACIA DUSTER VU	5	95	8	120.9%	6	205	20	279.6%
RENAULT MASTER	9	50	6	-7.4%	7	173	6	3.6%
PEUGEOT BOXER	10	49	7	-2.0%	8	154	7	-7.8%
IVECO *) DAILY	7	63	23	425.0%	9	127	8	-0.8%
TOYOTA HI-LUX	8	56	11	107.4%	10	126	12	82.6%
Rest		330		-7.0%		1313		-1.8%
TOTAL		1285		17.0%		3856		20.5%

*) Estimari APIA / APIA Estimates

Vanzari com <3.5t si minibus - modele - 2015

