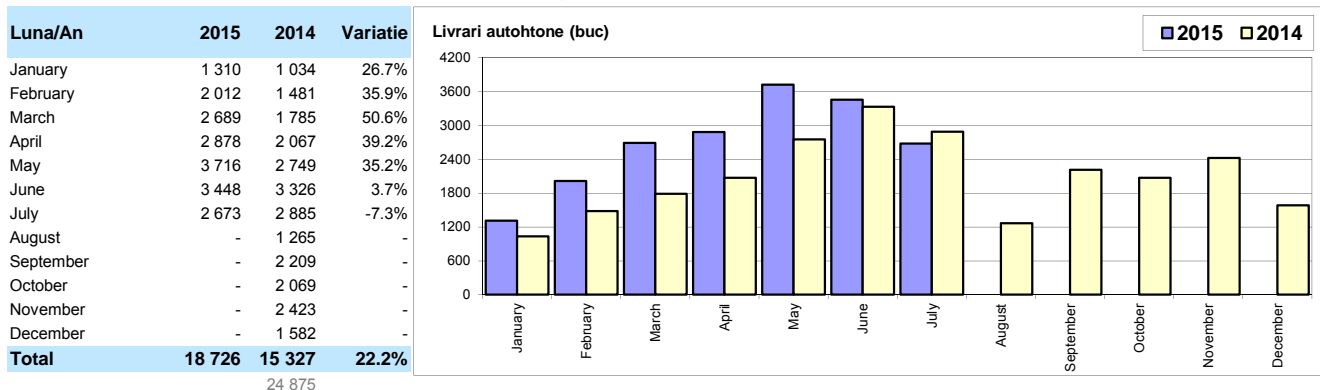
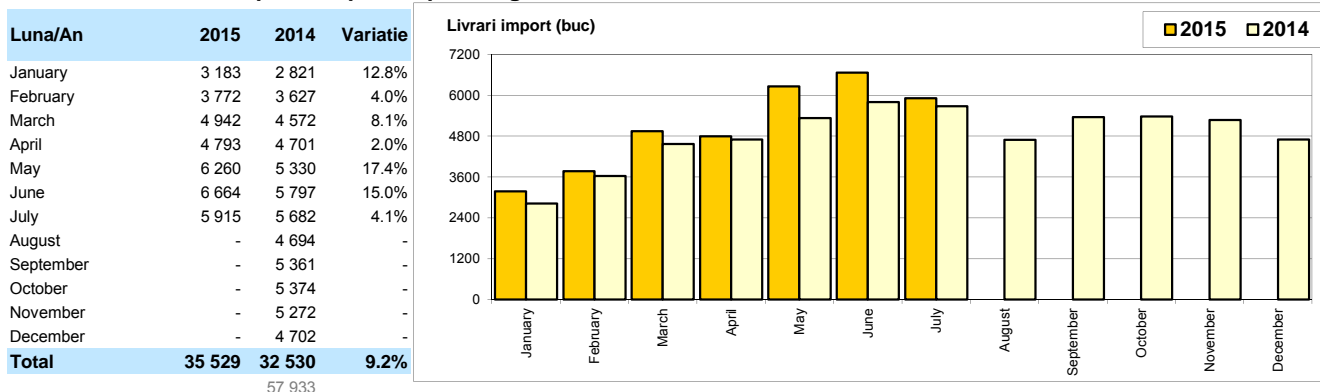


Livrari autoturisme autohtone / Domestic passenger car sales

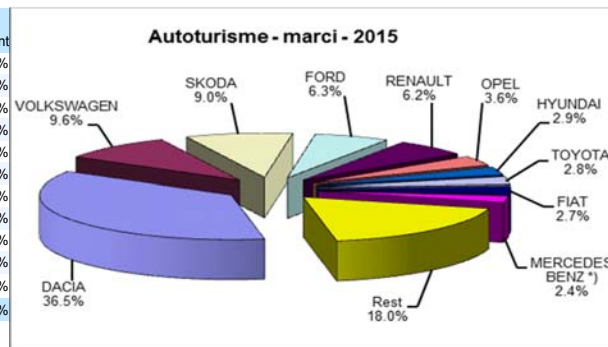


Livrari autoturisme import / Imported passenger car sales



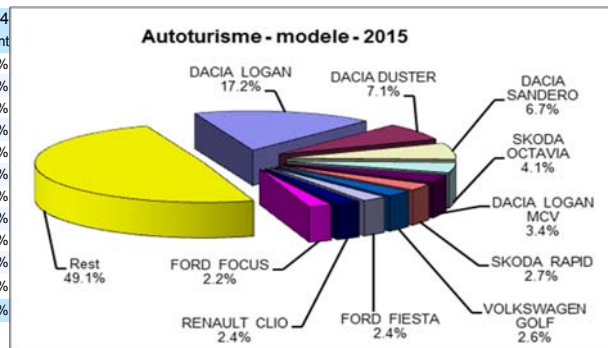
Top livrari autoturisme - marci / Passenger car top - by make

MARCA	Iulie		Variatie Iunie		2015		Variatie 2014	
	pozitie	unitati	pozitie	procent	pozitie	unitati	pozitie	procent
DACIA	1	2812	1	-24.4%	1	19822	1	21.6%
VOLKSWAGEN	3	837	2	-14.4%	2	5192	2	9.9%
SKODA	2	840	3	7.1%	3	4896	3	11.9%
FORD	4	644	5	22.4%	4	3434	4	3.7%
RENAULT	5	491	4	-27.6%	5	3369	5	6.1%
OPEL	6	321	6	-28.5%	6	1928	6	-10.8%
HYUNDAI	9	226	7	-33.7%	7	1570	7	8.1%
TOYOTA	7	256	8	-23.8%	8	1513	8	12.2%
FIAT	8	239	9	-19.5%	9	1455	13	66.1%
MERCEDES BENZ *)	10	217	11	4.8%	10	1290	10	16.6%
Rest		1705		-5.1%		9786		8.4%
TOTAL		8588		-15.1%		54255		13.4%



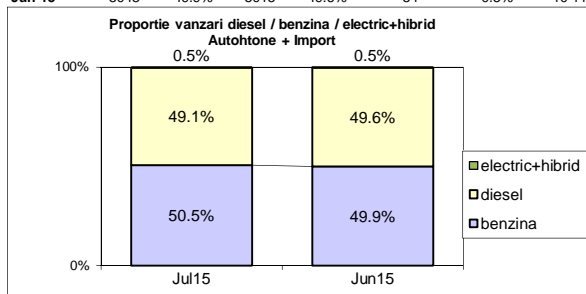
Top livrari autoturisme - modele / Passenger car top - by model

MODEL	Iulie		Variatie Iunie		2015		Variatie 2014	
	pozitie	unitati	pozitie	procent	pozitie	unitati	pozitie	procent
DACIA LOGAN	1	1280	1	-27.9%	1	9341	1	30.7%
DACIA DUSTER	3	399	2	-46.2%	2	3868	3	28.6%
DACIA SANDERO	2	718	3	40.2%	3	3617	2	7.4%
SKODA OCTAVIA	4	395	5	9.7%	4	2244	4	8.7%
DACIA LOGAN MCV	5	266	4	-34.8%	5	1833	6	9.7%
SKODA RAPID	11	168	7	-29.1%	6	1491	8	10.6%
VOLKSWAGEN GOLF	7	214	11	23.0%	7	1410	5	-18.3%
FORD FIESTA	6	262	16	70.1%	8	1295	7	-18.9%
RENAULT CLIO	8	207	6	-15.9%	9	1285	9	12.4%
FORD FOCUS	10	197	9	-9.2%	10	1212	11	30.0%
Rest		4482		-15.2%		26659		11.8%
TOTAL		8588		-15.1%		54255		13.4%

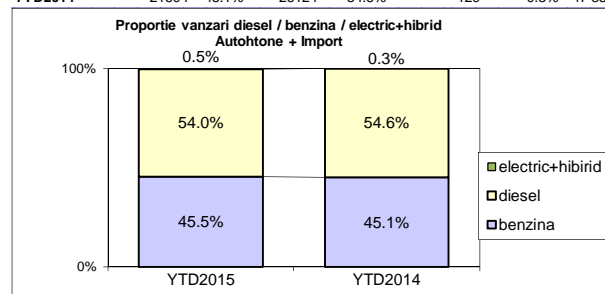


Segmentare dupa tipul de combustibil / Segmentation by type of fuel
Autohtone + Import / Domestic + Imported

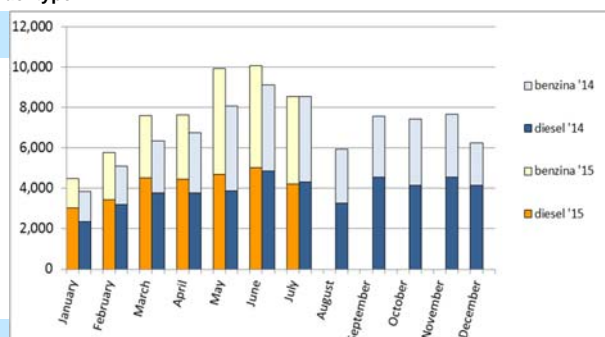
	benzina		diesel		electric+hibrid	total	
Jul-15	4334	50.5%	4213	49.1%	41	0.5%	8 588
Jun-15	5043	49.9%	5015	49.6%	54	0.5%	10 112



	benzina		diesel		electric+hibrid	total	
YTD2015	24707	45.5%	29302	54.0%	246	0.5%	54 255
YTD2014	21604	45.1%	26124	54.6%	129	0.3%	47 857


Livrari autoturisme in functie de tipul de combustibil / Passenger car sales by fuel type

Luna/An	2015		Pondere		2014		Variatie 15/14	
	diesel	benzina	diesel	benzina	diesel	benzina	diesel	benzina
January	3 029	1 447	67.4%	32.2%	2 364	1 480	28.1%	-2.2%
February	3 429	2 333	59.3%	40.3%	3 208	1 885	6.9%	23.8%
March	4 505	3 106	59.0%	40.7%	3 757	2 575	19.9%	20.6%
April	4 434	3 204	57.8%	41.8%	3 762	2 983	17.9%	7.4%
May	4 677	5 240	46.9%	52.5%	3 883	4 173	20.4%	25.6%
June	5 015	5 043	49.6%	49.9%	4 853	4 251	3.3%	18.6%
July	4 213	4 334	49.1%	50.5%	4 297	4 257	-2.0%	1.8%
August	-	-	-	-	3 264	2 686	-	-
September	-	-	-	-	4 546	3 005	-	-
October	-	-	-	-	4 147	3 271	-	-
November	-	-	-	-	4 541	3 130	-	-
December	-	-	-	-	4 150	2 104	-	-
Total	29 302	24 707	54.0%	45.5%	26 124	21 604	12.2%	14.4%


Top 10 Autoturisme in functie de tipul de alimentare - marci / Top 10 passenger car sales by fuel type and make
Top 10 diesel - marci

MARCA	Iulie 2015	7 luni 2015	Pondere %	Variatie an precedent %	Pondere diesel/total
DACIA	939	8572	29.3%	21.2%	43.2%
SKODA	412	3152	10.8%	21.1%	64.4%
VOLKSWAGEN	498	3067	10.5%	-3.3%	59.1%
FORD	408	2291	7.8%	0.4%	66.7%
RENAULT	306	2223	7.6%	2.9%	66.0%
MERCEDES BENZ *)	190	1093	3.7%	10.0%	84.7%
BMW	157	923	3.1%	43.1%	93.4%
OPEL	141	876	3.0%	-10.2%	45.4%
AUDI	157	857	2.9%	11.3%	81.8%
NISSAN	105	811	2.8%	53.3%	68.2%
Rest	900	5437	18.6%	10.4%	49.0%
TOTAL	4213	29302	100%	12.2%	54.0%

*) Estimari APIA / APIA Estimates

Top 10 benzina - marci

MARCA	Iulie 2015	7 luni 2015	Pondere %	Variatie an precedent %	Pondere benzina/total
DACIA	1873	11250	45.5%	21.9%	56.8%
VOLKSWAGEN	337	2120	8.6%	36.8%	40.8%
SKODA	428	1744	7.1%	-1.6%	35.6%
FORD	236	1143	4.6%	10.8%	33.3%
RENAULT	185	1141	4.6%	12.5%	33.9%
HYUNDAI	156	1086	4.4%	16.5%	69.2%
OPEL	180	1051	4.3%	-11.3%	54.5%
TOYOTA	151	964	3.9%	23.7%	63.7%
FIAT	115	744	3.0%	43.9%	51.1%
SUZUKI	137	447	1.8%	-40.2%	91.2%
Rest	536	3017	12.2%	6.0%	28.5%
TOTAL	4334	24707	100%	14.4%	45.5%

*) Estimari APIA / APIA Estimates

Top 10 Autoturisme in functie de tipul de alimentare - modele / Top 10 passenger car sales by fuel type and model
Top 10 diesel - model

MODEL	Iulie 2015	7 luni 2015	Pondere %	Variatie an precedent %	Pondere diesel/total
DACIA DUSTER	355	3285	11.2%	39.7%	84.9%
DACIA LOGAN	226	2077	7.1%	9.6%	22.2%
SKODA OCTAVIA	255	1770	6.0%	14.9%	78.9%
DACIA SANDERO	135	1214	4.1%	11.5%	33.6%
DACIA LOGAN MCV	97	1032	3.5%	23.9%	56.3%
VOLKSWAGEN GOLF	157	943	3.2%	-18.8%	66.9%
FORD FIESTA	188	898	3.1%	-22.2%	69.3%
RENAULT CAPTUR	66	849	2.9%	7.1%	72.5%
SKODA RAPID	67	844	2.9%	75.1%	56.6%
VOLKSWAGEN PASSAT	138	840	2.9%	17.0%	96.1%
Rest	2529	15550	53.1%	10.2%	57.4%
TOTAL	4213	29302	100%	12.2%	54.0%

*) Estimari APIA / APIA Estimates

Top 10 benzina - model

MODEL	Iulie 2015	7 luni 2015	Pondere %	Variatie an precedent %	Pondere benzina/total
DACIA LOGAN	1054	7264	29.4%	38.3%	77.8%
DACIA SANDERO	583	2403	9.7%	5.4%	66.4%
DACIA LOGAN MCV	169	801	3.2%	-4.4%	43.7%
VOLKSWAGEN POLO	73	697	2.8%	13.5%	87.3%
SKODA RAPID	101	647	2.6%	-25.3%	43.4%
DACIA DUSTER	44	583	2.4%	-11.1%	15.1%
RENAULT CLIO	122	568	2.3%	6.2%	44.2%
FORD FOCUS	122	553	2.2%	54.9%	45.6%
SKODA FABIA	167	515	2.1%	122.0%	80.6%
HYUNDAI I20	44	511	2.1%	39.2%	89.5%
Rest	1855	10165	41.1%	5.8%	34.3%
TOTAL	4334	24707	100%	14.4%	45.5%

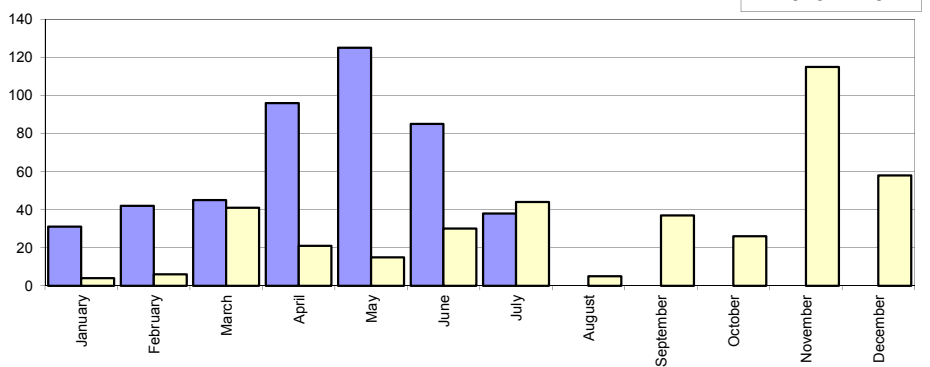
*) Estimari APIA / APIA Estimates

Livrarile comerciale usoare + minibus autohtone / Domestic LCV + minibus sales

Luna/An	2015	2014	Variatie
January	31	4	675.0%
February	42	6	600.0%
March	45	41	9.8%
April	96	21	357.1%
May	125	15	733.3%
June	85	30	183.3%
July	38	44	-13.6%
August	-	5	-
September	-	37	-
October	-	26	-
November	-	115	-
December	-	58	-
Total	462	161	187.0%

402

Livrarile autohtone (buc)

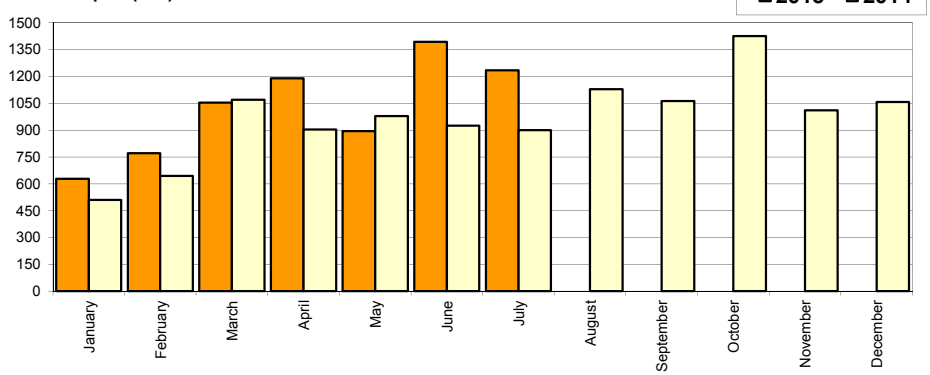


Livrarile comerciale usoare + minibus import / Imported LCV + minibus sales

Luna/An	2015	2014	Variatie
January	628	511	22.9%
February	772	645	19.7%
March	1 053	1 069	-1.5%
April	1 189	903	31.7%
May	894	978	-8.6%
June	1 394	925	50.7%
July	1 234	900	37.1%
August	-	1 128	-
September	-	1 063	-
October	-	1 426	-
November	-	1 011	-
December	-	1 058	-
Total	7 164	5 931	20.8%

11 617

Livrarile import (buc)

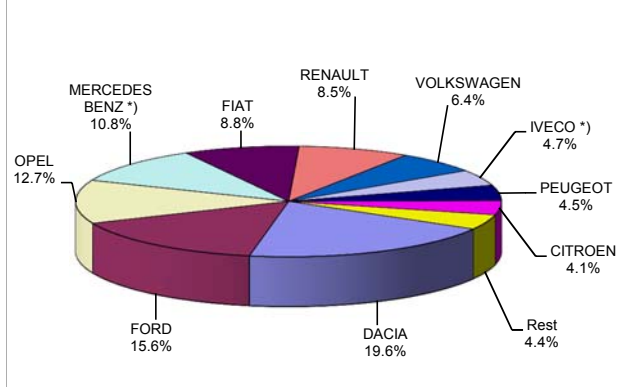


Livrarile comerciale <3.5t si minibus - marci / LCV + minibus sales by make

MARCA	Iulie		Variatie lunie		2015		Variatie 2014	
	pozitie	unitati	pozitie	procent	pozitie	unitati	pozitie	procent
DACIA	4	136	1	-52.9%	1	1495	1	17.3%
FORD	3	170	3	-28.6%	2	1188	3	65.0%
OPEL	1	265	2	-8.0%	3	968	9	300.0%
MERCEDES BENZ *)	2	190	6	69.6%	4	822	2	-4.3%
FIAT	6	99	5	-15.4%	5	671	5	20.3%
RENAULT	5	123	4	-15.8%	6	647	4	0.3%
VOLKSWAGEN	8	66	7	-30.5%	7	485	6	-10.9%
IVECO *)	7	83	8	2.5%	8	355	10	67.5%
PEUGEOT	10	25	10	-37.5%	9	344	8	3.3%
CITROEN	9	65	9	30.0%	10	315	7	-8.7%
Rest		50		117.4%		336		-6.4%
TOTAL		1272		-14.0%		7626		25.2%

*) Estimari APIA / APIA Estimates

Vanzari com <3.5t si minibus - marci - 2015



Livrarile comerciale <3.5t si minibus - modele / LCV + minibus sales by model

MODEL	Iulie		Variatie lunie		2015		Variatie 2014	
	pozitie	unitati	pozitie	procent	pozitie	unitati	pozitie	procent
DACIA DOKKER VAN	2	98	2	-52.0%	1	1033	1	-7.3%
OPEL MOVANO	1	244	1	7.5%	2	810	10	454.8%
FORD TRANSIT	5	80	3	-56.0%	3	701	3	58.2%
FIAT DUCATO	3	84	4	-16.8%	4	540	4	65.6%
MB *) SPRINTER	7	77	8	14.9%	5	421	2	-6.0%
DACIA DUSTER VU	18	16	7	-79.5%	6	420	13	208.8%
RENAULT MASTER	6	78	5	-4.9%	7	394	5	28.3%
IVECO *) DAILY	4	83	6	2.5%	8	355	9	67.5%
PEUGEOT BOXER	11	25	13	-34.2%	9	277	7	2.6%
CITROEN JUMPER	10	57	9	21.3%	10	262	6	-10.9%
Rest		430		15.6%		2413		0.7%
TOTAL		1272		-14.0%		7626		25.2%

*) Estimari APIA / APIA Estimates

Vanzari com <3.5t si minibus - modele - 2015

