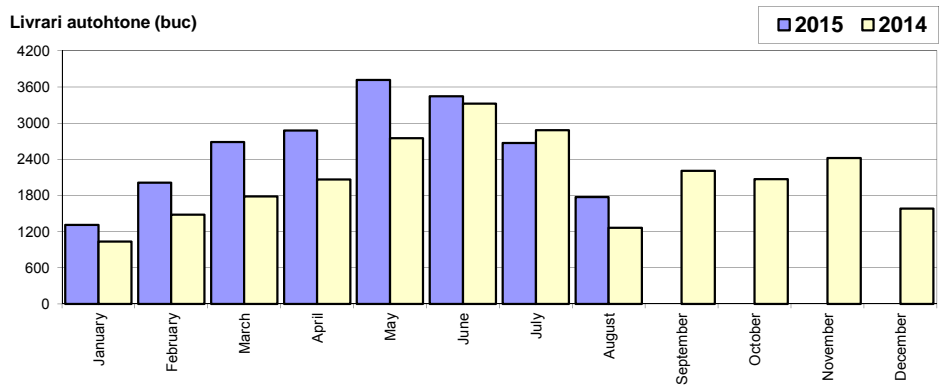


## Livrarile autoturismelor autohtone / Domestic passenger car sales

Luna/An	2015	2014	Variatie
January	1 310	1 034	26.7%
February	2 012	1 481	35.9%
March	2 689	1 785	50.6%
April	2 878	2 067	39.2%
May	3 716	2 749	35.2%
June	3 448	3 326	3.7%
July	2 673	2 885	-7.3%
August	1 772	1 265	40.1%
September	-	2 209	-
October	-	2 069	-
November	-	2 423	-
December	-	1 582	-
<b>Total</b>	<b>20 498</b>	<b>16 592</b>	<b>23.5%</b>

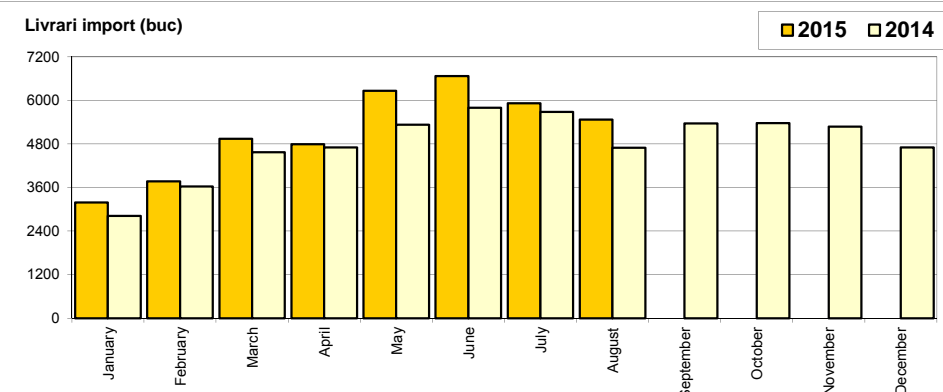
24 875



## Livrarile autoturismelor import / Imported passenger car sales

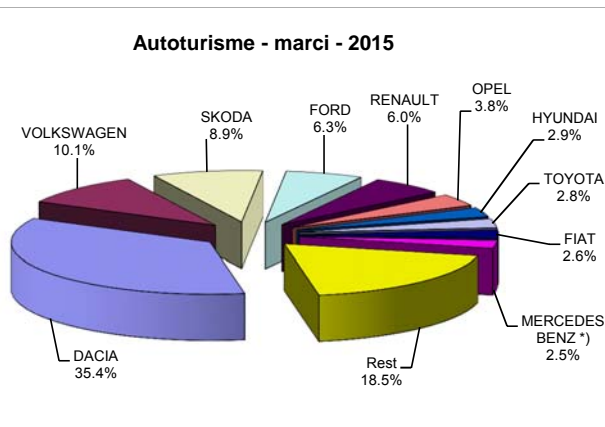
Luna/An	2015	2014	Variatie
January	3 183	2 821	12.8%
February	3 772	3 627	4.0%
March	4 942	4 572	8.1%
April	4 793	4 701	2.0%
May	6 260	5 330	17.4%
June	6 664	5 797	15.0%
July	5 915	5 682	4.1%
August	5 473	4 694	16.6%
September	-	5 361	-
October	-	5 374	-
November	-	5 272	-
December	-	4 702	-
<b>Total</b>	<b>41 002</b>	<b>37 224</b>	<b>10.1%</b>

57 933



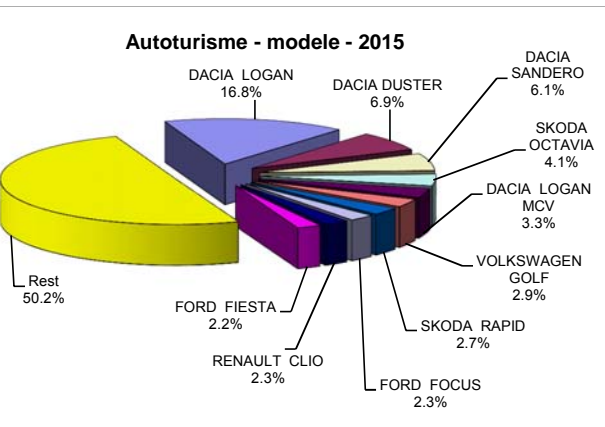
## Top livrarile autoturismelor - marti / Passenger car top - by make

MARCA	August		Variatie Iulie		2015		Variatie 2014	
	pozitie	unitati	pozitie	procent	pozitie	unitati	pozitie	procent
DACIA	1	1955	1	-30.5%	1	21777	1	22.4%
VOLKSWAGEN	2	1031	3	23.2%	2	6223	2	13.3%
SKODA	3	606	2	-27.9%	3	5502	3	9.1%
FORD	4	456	4	-29.2%	4	3890	4	4.0%
RENAULT	6	338	5	-31.2%	5	3707	5	2.0%
OPEL	5	421	6	31.2%	6	2349	6	-3.5%
HYUNDAI	9	220	9	-2.7%	7	1790	7	9.8%
TOYOTA	8	221	7	-13.7%	8	1734	8	11.1%
FIAT	15	154	8	-35.6%	9	1609	12	51.1%
MERCEDES BENZ *)	7	225	10	3.7%	10	1515	10	20.0%
Rest		1618		-5.1%		11404		12.2%
<b>TOTAL</b>		<b>7245</b>		<b>-15.6%</b>		<b>61500</b>		<b>14.3%</b>



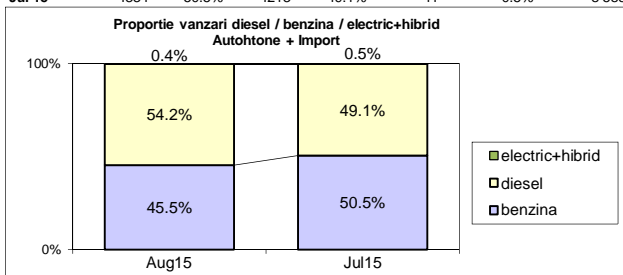
## Top livrarile autoturismelor - modele / Passenger car top - by model

MODEL	August		Variatie Iulie		2015		Variatie 2014	
	pozitie	unitati	pozitie	procent	pozitie	unitati	pozitie	procent
DACIA LOGAN	1	1021	1	-20.2%	1	10362	1	31.6%
DACIA DUSTER	3	359	3	-10.0%	2	4227	3	29.1%
DACIA SANDERO	9	161	2	-77.6%	3	3778	2	8.0%
SKODA OCTAVIA	4	292	4	-26.1%	4	2536	4	10.6%
DACIA LOGAN MCV	7	220	5	-17.3%	5	2053	6	14.3%
VOLKSWAGEN GOLF	2	360	7	68.2%	6	1770	5	-7.2%
SKODA RAPID	8	177	11	5.4%	7	1668	8	0.2%
FORD FOCUS	6	230	10	16.8%	8	1442	11	34.0%
RENAULT CLIO	12	135	8	-34.8%	9	1420	9	13.5%
FORD FIESTA	32	66	6	-74.8%	10	1361	7	-22.1%
Rest		4224		-5.8%		30883		12.6%
<b>TOTAL</b>		<b>7245</b>		<b>-15.6%</b>		<b>61500</b>		<b>14.3%</b>

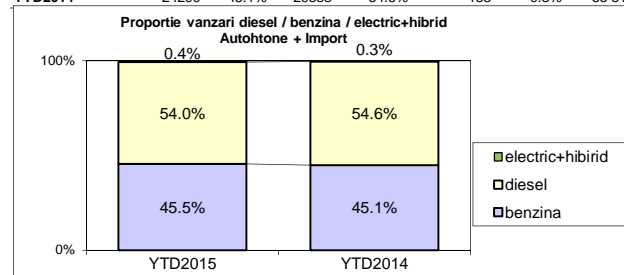


**Segmentare dupa tipul de combustibil / Segmentation by type of fuel**  
**Autohone + Import / Domestic + Imported**

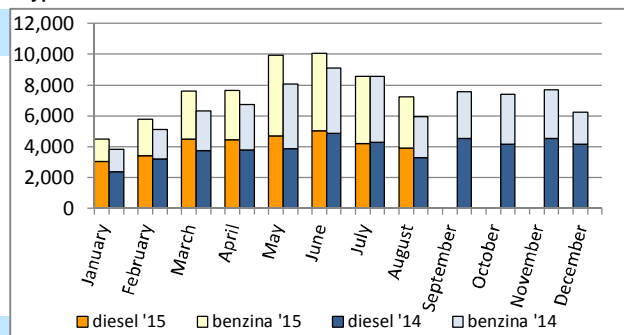
	benzina		diesel		electric+hibrid		total
Aug-15	3295	45.5%	3924	54.2%	26	0.4%	7 245
Jul-15	4334	50.5%	4213	49.1%	41	0.5%	8 588



	benzina		diesel		electric+hibrid		total
YTD2015	28002	45.5%	33226	54.0%	272	0.4%	61 500
YTD2014	24290	45.1%	29388	54.6%	138	0.3%	53 816


**Livrari autoturisme in functie de tipul de combustibil / Passenger car sales by fuel type**

Luna/An	2015		Pondere		2014		Variatie 15/14	
	diesel	benzina	diesel	benzina	diesel	benzina	diesel	benzina
January	3 029	1 447	67.4%	32.2%	2 364	1 480	28.1%	-2.2%
February	3 429	2 333	59.3%	40.3%	3 208	1 885	6.9%	23.8%
March	4 505	3 106	59.0%	40.7%	3 757	2 575	19.9%	20.6%
April	4 434	3 204	57.8%	41.8%	3 762	2 983	17.9%	7.4%
May	4 677	5 240	46.9%	52.5%	3 883	4 173	20.4%	25.6%
June	5 015	5 043	49.6%	49.9%	4 853	4 251	3.3%	18.6%
July	4 213	4 334	49.1%	50.5%	4 297	4 257	-2.0%	1.8%
August	3 924	3 295	54.2%	45.5%	3 264	2 686	20.2%	22.7%
September	-	-	-	-	4 546	3 005	-	-
October	-	-	-	-	4 147	3 271	-	-
November	-	-	-	-	4 541	3 130	-	-
December	-	-	-	-	4 150	2 104	-	-
<b>Total</b>	<b>33 226</b>	<b>28 002</b>	<b>54.0%</b>	<b>45.5%</b>	<b>29 388</b>	<b>24 290</b>	<b>13.1%</b>	<b>15.3%</b>


**Top 10 Autoturisme in functie de tipul de alimentare - marci / Top 10 passenger car sales by fuel type and make**
**Top 10 diesel - marci**

MARCA	August 2015	8 luni 2015	Pondere %	Variatie an precedent %	Pondere diesel/total
DACIA	766	9338	28.1%	20.4%	42.9%
VOLKSWAGEN	795	3862	11.6%	4.2%	62.1%
SKODA	329	3481	10.5%	18.4%	63.3%
FORD	272	2563	7.7%	1.5%	65.9%
RENAULT	223	2446	7.4%	-0.5%	66.0%
MERCEDES BENZ *)	192	1285	3.9%	13.6%	84.8%
BMW	187	1110	3.3%	44.3%	92.6%
OPEL	200	1076	3.2%	0.4%	45.8%
AUDI	141	998	3.0%	15.9%	80.9%
NISSAN	105	916	2.8%	61.6%	66.7%
Rest	714	6151	18.5%	9.9%	48.3%
<b>TOTAL</b>	<b>3924</b>	<b>33226</b>	<b>100%</b>	<b>13.1%</b>	<b>54.0%</b>

\*) Estimari APIA / APIA Estimates

**Top 10 benzina - marci**

MARCA	August 2015	8 luni 2015	Pondere %	Variatie an precedent %	Pondere benzina/total
DACIA	1189	12439	44.4%	24.0%	57.1%
VOLKSWAGEN	236	2356	8.4%	32.1%	37.9%
SKODA	277	2021	7.2%	-3.8%	36.7%
FORD	184	1327	4.7%	9.1%	34.1%
OPEL	221	1272	4.5%	-6.5%	54.2%
RENAULT	115	1256	4.5%	6.8%	33.9%
HYUNDAI	141	1227	4.4%	18.3%	68.5%
TOYOTA	150	1114	4.0%	23.5%	64.2%
FIAT	107	851	3.0%	38.8%	52.9%
SUZUKI	125	572	2.0%	-30.9%	90.1%
Rest	550	3567	12.7%	10.1%	29.0%
<b>TOTAL</b>	<b>3295</b>	<b>28002</b>	<b>100%</b>	<b>15.3%</b>	<b>45.5%</b>

\*) Estimari APIA / APIA Estimates

**Top 10 Autoturisme in functie de tipul de alimentare - modele / Top 10 passenger car sales by fuel type and model**
**Top 10 diesel - model**

MODEL	August 2015	8 luni 2015	Pondere %	Variatie an precedent %	Pondere diesel/total
DACIA DUSTER	335	3620	10.9%	41.0%	85.6%
DACIA LOGAN	112	2189	6.6%	5.4%	21.1%
SKODA OCTAVIA	198	1968	5.9%	14.5%	77.6%
DACIA SANDERO	37	1251	3.8%	9.9%	33.1%
VOLKSWAGEN GOLF	293	1236	3.7%	-4.7%	69.8%
DACIA LOGAN MCV	135	1167	3.5%	30.4%	56.8%
VOLKSWAGEN PASSAT	139	979	2.9%	14.1%	95.6%
SKODA RAPID	89	933	2.8%	64.6%	55.9%
FORD FIESTA	26	924	2.8%	-24.9%	67.9%
RENAULT CAPTUR	46	895	2.7%	-7.1%	72.8%
Rest	2514	18064	54.4%	12.4%	57.4%
<b>TOTAL</b>	<b>3924</b>	<b>33226</b>	<b>100%</b>	<b>13.1%</b>	<b>54.0%</b>

\*) Estimari APIA / APIA Estimates

**Top 10 benzina - model**

MODEL	August 2015	8 luni 2015	Pondere %	Variatie an precedent %	Pondere benzina/total
DACIA LOGAN	909	8173	29.2%	41.0%	78.9%
DACIA SANDERO	124	2527	9.0%	7.0%	66.9%
DACIA LOGAN MCV	85	886	3.2%	-1.8%	43.2%
VOLKSWAGEN POLO	63	760	2.7%	8.1%	73.6%
SKODA RAPID	88	735	2.6%	-33.1%	44.1%
FORD FOCUS	105	658	2.3%	54.8%	45.6%
RENAULT CLIO	70	638	2.3%	5.5%	44.9%
DACIA DUSTER	24	607	2.2%	-14.1%	14.4%
SKODA FABIA	83	598	2.1%	131.8%	80.8%
SKODA OCTAVIA	94	568	2.0%	-1.0%	22.4%
Rest	1650	11852	42.3%	9.1%	36.8%
<b>TOTAL</b>	<b>3295</b>	<b>28002</b>	<b>100%</b>	<b>15.3%</b>	<b>45.5%</b>

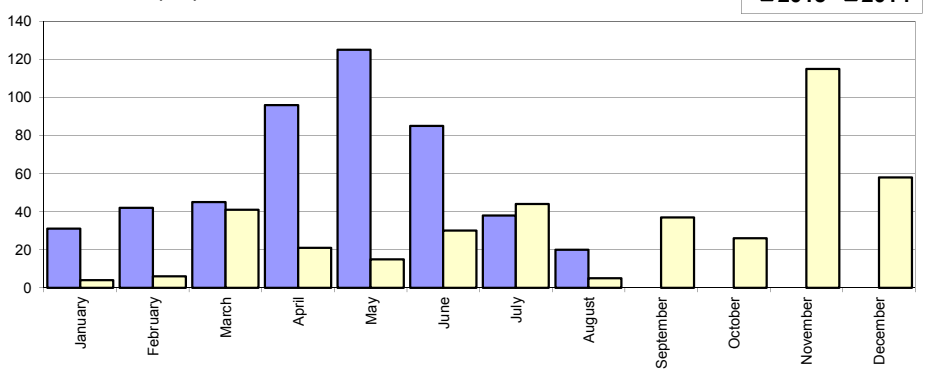
\*) Estimari APIA / APIA Estimates

## Livrari comerciale usoare + minibus autohtone / Domestic LCV + minibus sales

Luna/An	2015	2014	Variatie
January	31	4	675.0%
February	42	6	600.0%
March	45	41	9.8%
April	96	21	357.1%
May	125	15	733.3%
June	85	30	183.3%
July	38	44	-13.6%
August	20	5	300.0%
September	-	37	-
October	-	26	-
November	-	115	-
December	-	58	-
<b>Total</b>	<b>482</b>	<b>166</b>	<b>190.4%</b>

402

Livrari autohtone (buc)

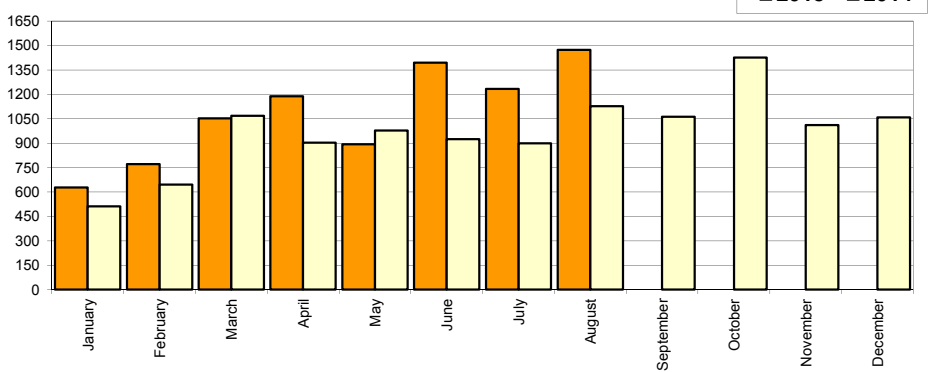


## Livrari comerciale usoare + minibus import / Imported LCV + minibus sales

Luna/An	2015	2014	Variatie
January	628	511	22.9%
February	772	645	19.7%
March	1 053	1 069	-1.5%
April	1 189	903	31.7%
May	894	978	-8.6%
June	1 394	925	50.7%
July	1 234	900	37.1%
August	1 474	1 128	30.7%
September	-	1 063	-
October	-	1 426	-
November	-	1 011	-
December	-	1 058	-
<b>Total</b>	<b>8 638</b>	<b>7 059</b>	<b>22.4%</b>

11 617

Livrari import (buc)

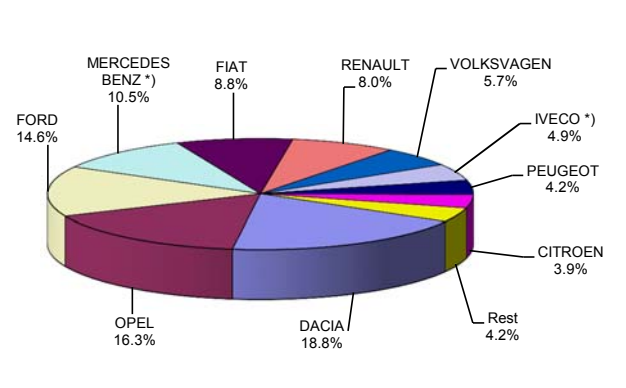


## Livrari comerciale &lt;3.5t si minibus - marci / LCV + minibus sales by make

MARCA	August		Variatie Iulie		2015		Variatie 2014	
	pozitie	unitati	pozitie	procent	pozitie	unitati	pozitie	procent
DACIA	2	217	4	59.6%	1	1712	1	10.1%
OPEL	1	518	1	95.5%	2	1486	7	202.0%
FORD	3	148	3	-12.9%	3	1336	3	58.5%
MERCEDES BENZ *)	4	140	2	-26.3%	4	962	2	2.2%
FIAT	5	135	6	36.4%	5	806	5	23.4%
RENAULT	7	85	5	-30.9%	6	732	4	2.0%
VOLKSWAGEN	10	38	8	-42.4%	7	523	6	-13.8%
IVECO *)	6	89	7	7.2%	8	444	10	79.8%
PEUGEOT	8	41	10	64.0%	9	385	8	0.3%
CITROEN	9	39	9	-40.0%	10	354	9	-5.9%
Rest		44		-12.0%		380		-7.1%
<b>TOTAL</b>		<b>1494</b>		<b>17.5%</b>		<b>9120</b>		<b>26.2%</b>

\*) Estimari APIA / APIA Estimates

Vanzari com &lt;3.5t si minibus - marci - 2015



## Livrari comerciale &lt;3.5t si minibus - modele / LCV + minibus sales by model

MODEL	August		Variatie Iulie		2015		Variatie 2014	
	pozitie	unitati	pozitie	procent	pozitie	unitati	pozitie	procent
OPEL MOVANO	1	503	1	106.2%	1	1313	5	239.3%
DACIA DOKKER VAN	2	197	2	101.0%	2	1230	1	-11.5%
FORD TRANSIT	6	75	5	-6.3%	3	776	2	56.1%
FIAT DUCATO	3	113	3	34.5%	4	653	4	65.3%
MERCEDES BENZ *) SPRINTER	4	92	7	19.5%	5	513	3	5.8%
RENAULT MASTER	7	54	6	-30.8%	6	448	6	34.1%
IVECO *) DAILY	5	89	4	7.2%	7	444	10	79.8%
DACIA DUSTER VU	29	6	18	-62.5%	8	426	16	204.3%
PEUGEOT BOXER	8	39	11	56.0%	9	316	8	1.0%
CITROEN JUMPER	9	35	10	-38.6%	10	297	7	-7.5%
Rest		291		-32.3%		2704		-0.5%
<b>TOTAL</b>		<b>1494</b>		<b>17.5%</b>		<b>9120</b>		<b>26.2%</b>

\*) Estimari APIA / APIA Estimates

Vanzari com &lt;3.5t si minibus - modele - 2015

