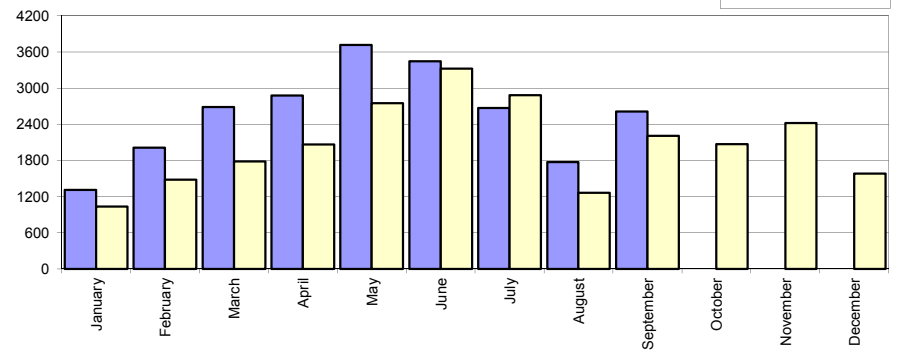


Livrari autoturisme autohtone / Domestic passenger car sales

Luna/An	2015	2014	Variatie
January	1 310	1 034	26.7%
February	2 012	1 481	35.9%
March	2 689	1 785	50.6%
April	2 878	2 067	39.2%
May	3 716	2 749	35.2%
June	3 448	3 326	3.7%
July	2 673	2 885	-7.3%
August	1 772	1 265	40.1%
September	2 612	2 209	18.2%
October	-	2 069	-
November	-	2 423	-
December	-	1 582	-
Total	23 110	18 801	22.9%

24 875

Livrari autohtone (buc)

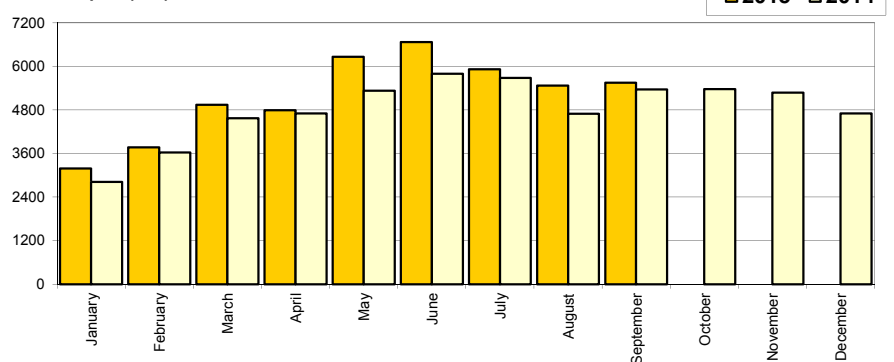


Livrari autoturisme import / Imported passenger car sales

Luna/An	2015	2014	Variatie
January	3 183	2 821	12.8%
February	3 772	3 627	4.0%
March	4 942	4 572	8.1%
April	4 793	4 701	2.0%
May	6 260	5 330	17.4%
June	6 664	5 797	15.0%
July	5 915	5 682	4.1%
August	5 473	4 694	16.6%
September	5 547	5 361	3.5%
October	-	5 374	-
November	-	5 272	-
December	-	4 702	-
Total	46 549	42 585	9.3%

57 933

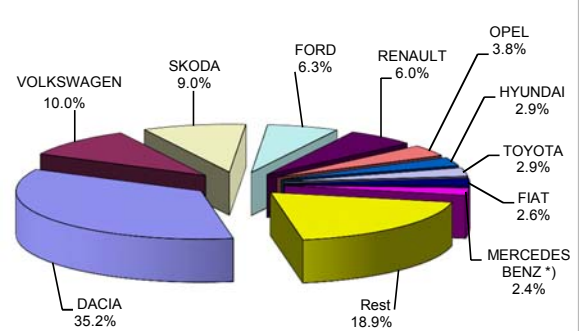
Livrari import (buc)



Top livrari autoturisme - marci / Passenger car top - by make

MARCA	Septembrie		Variatie August		2015		Variatie 2014	
	pozitie	unitati	pozitie	procent	pozitie	unitati	pozitie	procent
DACIA	1	2765	1	41.4%	1	24542	1	21.4%
VOLKSWAGEN	3	716	2	-30.6%	2	6939	2	9.0%
SKODA	2	762	3	25.7%	3	6264	3	9.1%
FORD	5	464	4	1.8%	4	4354	4	-0.3%
RENAULT	4	489	6	44.7%	5	4196	5	0.2%
OPEL	6	290	5	-31.1%	6	2639	6	-5.3%
HYUNDAI	9	235	9	6.8%	7	2025	7	7.4%
TOYOTA	7	271	8	22.6%	8	2005	8	15.0%
FIAT	10	200	15	29.9%	9	1809	13	54.0%
MERCEDES BENZ *)	14	174	7	-22.7%	10	1689	10	17.1%
Rest		1793		10.8%		13197		15.0%
TOTAL		8159		12.6%		69659		13.5%

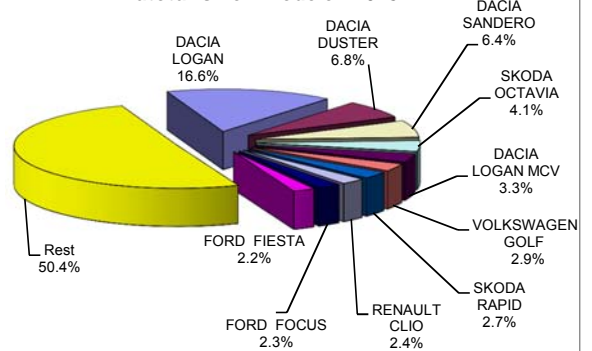
Autoturisme - marci - 2015



Top livrari autoturisme - modele / Passenger car top - by model

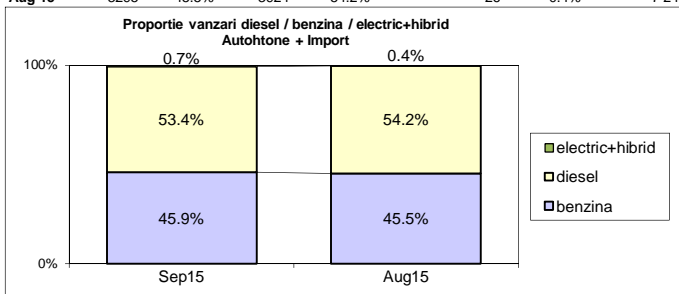
MODEL	Septembrie		Variatie August		2015		Variatie 2014	
	pozitie	unitati	pozitie	procent	pozitie	unitati	pozitie	procent
DACIA LOGAN	1	1170	1	14.6%	1	11532	1	28.1%
DACIA DUSTER	3	488	3	35.9%	2	4715	2	21.7%
DACIA SANDERO	2	695	9	331.7%	3	4473	3	21.7%
SKODA OCTAVIA	4	305	4	4.5%	4	2841	4	9.8%
DACIA LOGAN MCV	6	236	7	7.3%	5	2289	6	9.9%
VOLKSWAGEN GOLF	7	233	2	-35.3%	6	2003	5	-9.2%
SKODA RAPID	8	213	8	20.3%	7	1881	8	-1.3%
RENAULT CLIO	5	246	12	82.2%	8	1666	9	12.0%
FORD FOCUS	9	180	6	-21.7%	9	1622	11	31.1%
FORD FIESTA	11	149	32	125.8%	10	1510	7	-24.6%
Rest		4244		0.5%		35127		12.2%
TOTAL		8159		12.6%		69659		13.5%

Autoturisme - modele - 2015

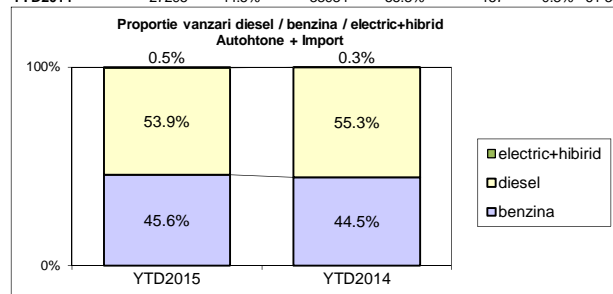


Segmentare dupa tipul de combustibil / Segmentation by type of fuel
Autohtone + Import / Domestic + Imported

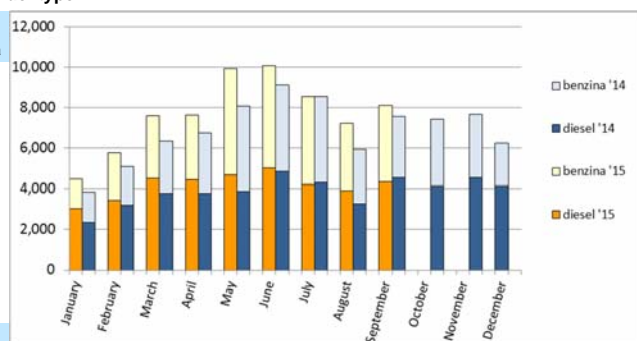
	benzina		diesel		electric+hibrid		total
Sep-15	3745	45.9%	4354	53.4%	60	0.7%	8 159
Aug-15	3295	45.5%	3924	54.2%	26	0.4%	7 245



	benzina		diesel		electric+hibrid		total
YTD2015	31747	45.6%	37580	53.9%	332	0.5%	69 659
YTD2014	27295	44.5%	33934	55.3%	157	0.3%	61 386


Livrari autoturisme in functie de tipul de combustibil / Passenger car sales by fuel type

Luna/An	2015		Pondere		2014		Variatie 15/14	
	diesel	benzina	diesel	benzina	diesel	benzina	diesel	benzina
January	3 029	1 447	67.4%	32.2%	2 364	1 480	28.1%	-2.2%
February	3 429	2 333	59.3%	40.3%	3 208	1 885	6.9%	23.8%
March	4 505	3 106	59.0%	40.7%	3 757	2 575	19.9%	20.6%
April	4 434	3 204	57.8%	41.8%	3 762	2 983	17.9%	7.4%
May	4 677	5 240	46.9%	52.5%	3 883	4 173	20.4%	25.6%
June	5 015	5 043	49.6%	49.9%	4 853	4 251	3.3%	18.6%
July	4 213	4 334	49.1%	50.5%	4 297	4 257	-2.0%	1.8%
August	3 924	3 295	54.2%	45.5%	3 264	2 686	20.2%	22.7%
September	4 354	3 745	53.4%	45.9%	4 546	3 005	-4.2%	24.6%
October	-	-	-	-	4 147	3 271	-	-
November	-	-	-	-	4 541	3 130	-	-
December	-	-	-	-	4 150	2 104	-	-
Total	37 580	31 747	53.9%	45.6%	33 934	27 295	10.7%	16.3%


Top 10 Autoturisme in functie de tipul de alimentare - marci / Top 10 passenger car sales by fuel type and make
Top 10 diesel - marci

MARCA	Septembrie 2015	9 luni 2015	Pondere %	Variatie an precedent %	Pondere diesel/total
DACIA	1326	10664	28.4%	14.5%	43.5%
VOLKSWAGEN	511	4373	11.6%	2.9%	63.0%
SKODA	400	3881	10.3%	16.4%	62.0%
FORD	220	2783	7.4%	-5.6%	63.9%
RENAULT	292	2738	7.3%	-2.8%	65.3%
MERCEDES BENZ *)	156	1441	3.8%	11.0%	85.3%
BMW	137	1247	3.3%	35.8%	91.5%
OPEL	117	1193	3.2%	-3.7%	45.2%
AUDI	129	1127	3.0%	15.2%	78.6%
NISSAN	142	1058	2.8%	69.6%	65.7%
Rest	924	7075	18.8%	13.8%	48.4%
TOTAL	4354	37580	100%	10.7%	53.9%

*) Estimari APIA / APIA Estimates

Top 10 benzina - marci

MARCA	Septembrie 2015	9 luni 2015	Pondere %	Variatie an precedent %	Pondere benzina/total
DACIA	1439	13878	43.7%	27.3%	56.5%
VOLKSWAGEN	205	2561	8.1%	20.8%	36.9%
SKODA	362	2383	7.5%	-1.0%	38.0%
FORD	244	1571	4.9%	10.9%	36.1%
RENAULT	194	1450	4.6%	5.7%	34.6%
OPEL	173	1445	4.6%	-6.5%	54.8%
HYUNDAI	120	1347	4.2%	11.3%	66.5%
TOYOTA	172	1286	4.1%	27.6%	64.1%
FIAT	151	1002	3.2%	46.9%	55.4%
SUZUKI	96	668	2.1%	-27.5%	89.2%
Rest	589	4156	13.1%	12.0%	29.4%
TOTAL	3745	31747	100%	16.3%	45.6%

*) Estimari APIA / APIA Estimates

Top 10 Autoturisme in functie de tipul de alimentare - modele / Top 10 passenger car sales by fuel type and model
Top 10 diesel - model

MODEL	Septembrie 2015	9 luni 2015	Pondere %	Variatie an precedent %	Pondere diesel/total
DACIA DUSTER	413	4033	10.7%	29.8%	85.5%
DACIA LOGAN	455	2644	7.0%	1.5%	22.9%
SKODA OCTAVIA	210	2178	5.8%	13.3%	76.7%
DACIA SANDERO	199	1450	3.9%	16.5%	32.4%
VOLKSWAGEN GOLF	133	1369	3.6%	-8.9%	68.3%
DACIA LOGAN MCV	111	1278	3.4%	19.8%	55.8%
VOLKSWAGEN PASSAT	137	1116	3.0%	14.8%	96.0%
SKODA RAPID	89	1022	2.7%	53.7%	54.3%
FORD FIESTA	87	1011	2.7%	-27.4%	67.0%
RENAULT CAPTUR	36	931	2.5%	-17.2%	72.8%
Rest	2484	20548	54.7%	12.1%	57.1%
TOTAL	4354	37580	100%	10.7%	53.9%

*) Estimari APIA / APIA Estimates

Top 10 benzina - model

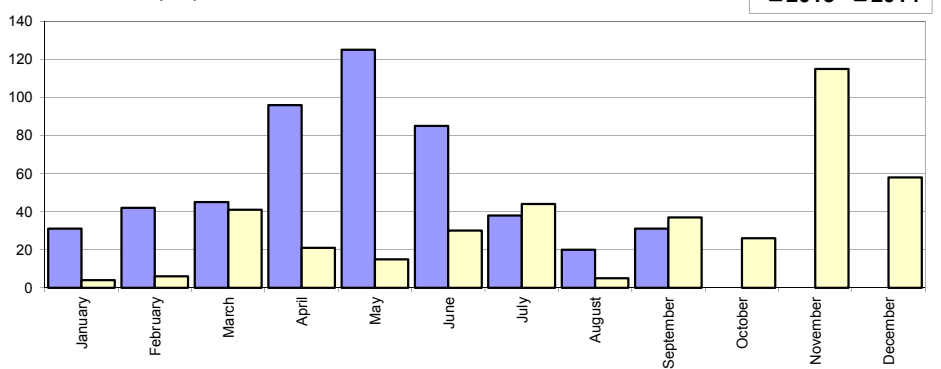
MODEL	Septembrie 2015	9 luni 2015	Pondere %	Variatie an precedent %	Pondere benzina/total
DACIA LOGAN	715	8888	28.0%	38.9%	77.1%
DACIA SANDERO	496	3023	9.5%	24.4%	67.6%
DACIA LOGAN MCV	125	1011	3.2%	-0.5%	44.2%
SKODA RAPID	124	859	2.7%	-30.8%	45.7%
VOLKSWAGEN POLO	40	800	2.5%	-6.4%	72.7%
FORD FOCUS	134	792	2.5%	62.3%	48.8%
RENAULT CLIO	134	772	2.4%	4.2%	46.3%
SKODA FABIA	110	708	2.2%	130.6%	78.3%
DACIA DUSTER	75	682	2.1%	-11.2%	14.5%
SKODA OCTAVIA	95	663	2.1%	-0.2%	23.3%
Rest	1697	13549	42.7%	9.4%	37.0%
TOTAL	3745	31747	100%	16.3%	45.6%

*) Estimari APIA / APIA Estimates

Livrari comerciale usoare + minibus autohtone / Domestic LCV + minibus sales

Luna/An	2015	2014	Variatie
January	31	4	675.0%
February	42	6	600.0%
March	45	41	9.8%
April	96	21	357.1%
May	125	15	733.3%
June	85	30	183.3%
July	38	44	-13.6%
August	20	5	300.0%
September	31	37	-16.2%
October	-	26	-
November	-	115	-
December	-	58	-
Total	513	203	152.7%

Livrari autohtone (buc)

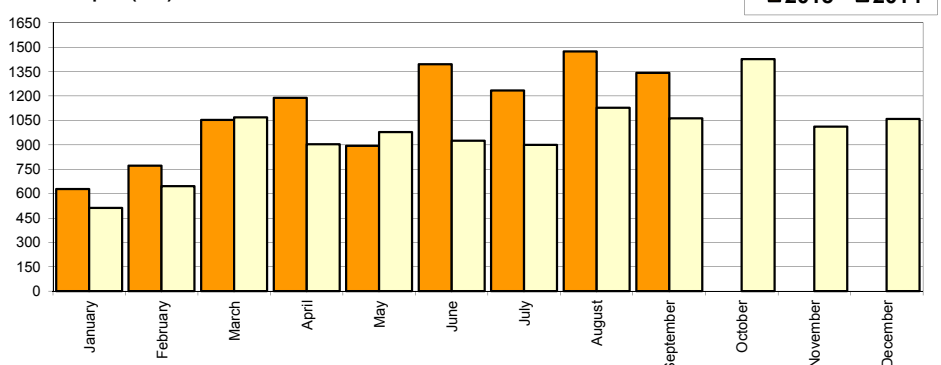


402

Livrari comerciale usoare + minibus import / Imported LCV + minibus sales

Luna/An	2015	2014	Variatie
January	628	511	22.9%
February	772	645	19.7%
March	1 053	1 069	-1.5%
April	1 189	903	31.7%
May	894	978	-8.6%
June	1 394	925	50.7%
July	1 234	900	37.1%
August	1 474	1 128	30.7%
September	1 342	1 063	26.2%
October	-	1 426	-
November	-	1 011	-
December	-	1 058	-
Total	9 980	8 122	22.9%

Livrari import (buc)



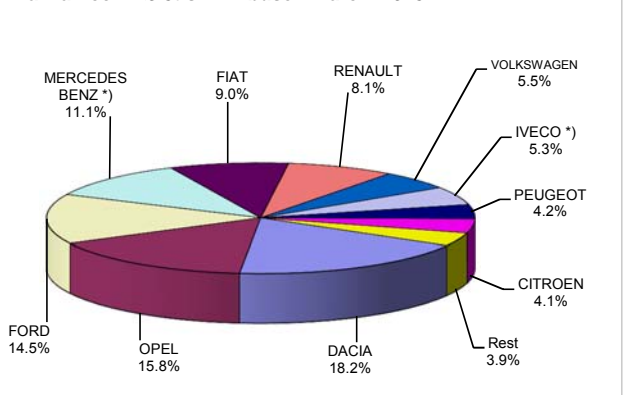
11 617

Livrari comerciale <3.5t si minibus - marci / LCV + minibus sales by make

MARCA	Septembrie		Variatie August			2015		Variatie2014	
	pozitie	unitati	pozitie	procent	pozitie	unitati	pozitie	procent	
DACIA	2	202	2	-6.9%	1	1914	1	9.4%	
OPEL	4	176	1	-66.0%	2	1662	7	145.1%	
FORD	3	190	3	28.4%	3	1526	3	60.0%	
MERCEDES BENZ *)	1	207	4	47.9%	4	1169	2	13.2%	
FIAT	5	137	5	1.5%	5	943	5	27.8%	
RENAULT	6	123	7	44.7%	6	855	4	8.9%	
VOLKSWAGEN	9	59	10	55.3%	7	582	6	-16.9%	
IVECO *)	7	117	6	31.5%	8	561	10	114.1%	
PEUGEOT	10	54	8	31.7%	9	439	8	-18.4%	
CITROEN	8	79	9	102.6%	10	433	9	0.9%	
Rest		29		-34.1%		409		-10.7%	
TOTAL		1373		-8.1%		10493		26.0%	

*) Estimari APIA / APIA Estimates

Vanzari com <3.5t si minibus - marci - 2015



Livrari comerciale <3.5t si minibus - modele / LCV + minibus sales by model

MODEL	Septembrie		Variatie August			2015		Variatie2014	
	pozitie	unitati	pozitie	procent	pozitie	unitati	pozitie	procent	
OPEL MOVANO	2	160	1	-68.2%	1	1473	2	159.3%	
DACIA DOKKER VAN	1	171	2	-13.2%	2	1401	1	-9.4%	
FORD TRANSIT	9	67	6	-10.7%	3	843	3	51.6%	
FIAT DUCATO	5	101	3	-10.6%	4	754	5	66.1%	
MB *) SPRINTER	3	119	4	29.4%	5	632	4	24.9%	
IVECO *) DAILY	4	117	5	31.5%	6	561	10	114.1%	
RENAULT MASTER	6	86	7	59.3%	7	534	7	44.3%	
DACIA DUSTER VU	14	27	29	350.0%	8	453	15	171.3%	
CITROEN JUMPER	7	76	9	117.1%	9	373	8	1.9%	
PEUGEOT BOXER	11	51	8	30.8%	10	367	6	-17.2%	
Rest		398		36.8%		3102		0.5%	
TOTAL		1373		-8.1%		10493		26.0%	

*) Estimari APIA / APIA Estimates

Vanzari com <3.5t si minibus - modele - 2015

