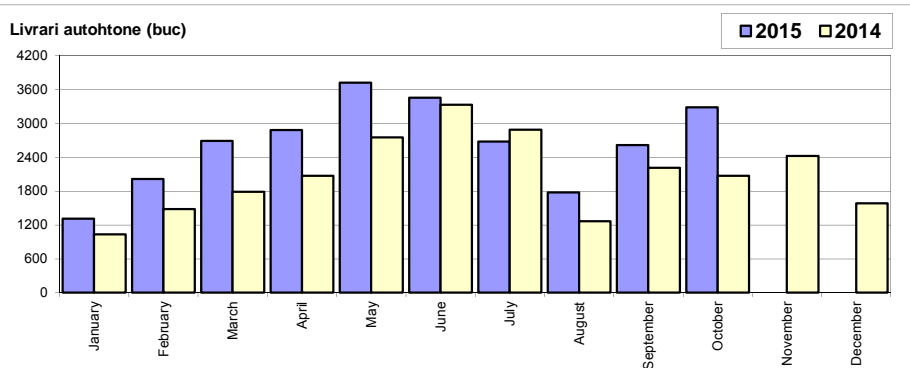


## Livrari autoturisme autohtone / Domestic passenger car sales

Luna/An	2015	2014	Variatie
January	1 310	1 034	26.7%
February	2 012	1 481	35.9%
March	2 689	1 785	50.6%
April	2 878	2 067	39.2%
May	3 716	2 749	35.2%
June	3 448	3 326	3.7%
July	2 673	2 885	-7.3%
August	1 772	1 265	40.1%
September	2 612	2 209	18.2%
October	3 283	2 069	58.7%
November	-	2 423	-
December	-	1 582	-
<b>Total</b>	<b>26 393</b>	<b>20 870</b>	<b>26.5%</b>

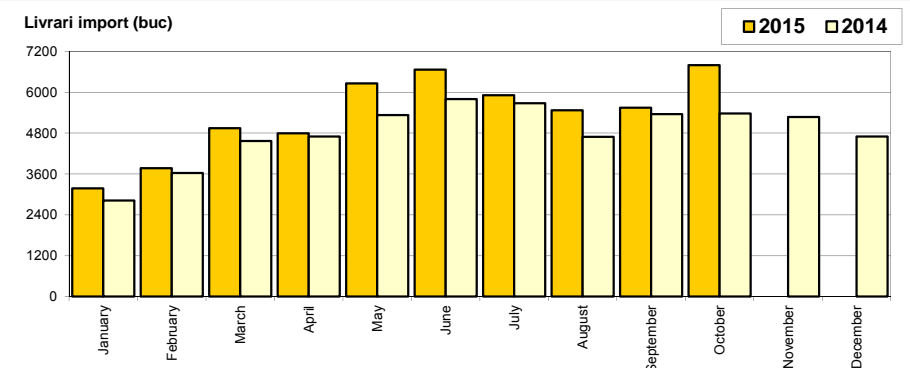
24 875



## Livrari autoturisme import / Imported passenger car sales

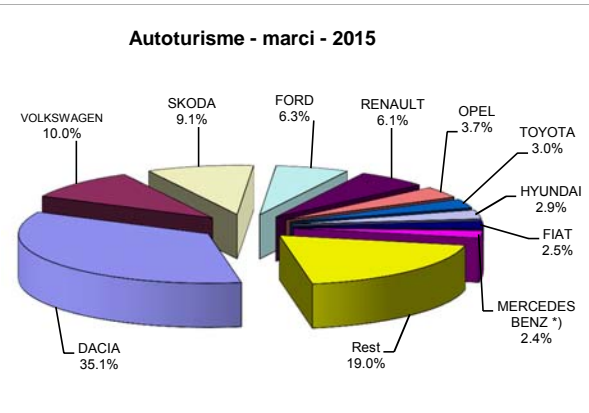
Luna/An	2015	2014	Variatie
January	3 183	2 821	12.8%
February	3 772	3 627	4.0%
March	4 942	4 572	8.1%
April	4 793	4 701	2.0%
May	6 260	5 330	17.4%
June	6 664	5 797	15.0%
July	5 915	5 682	4.1%
August	5 473	4 694	16.6%
September	5 547	5 361	3.5%
October	6 797	5 374	26.5%
November	-	5 272	-
December	-	4 702	-
<b>Total</b>	<b>53 346</b>	<b>47 959</b>	<b>11.2%</b>

57 933



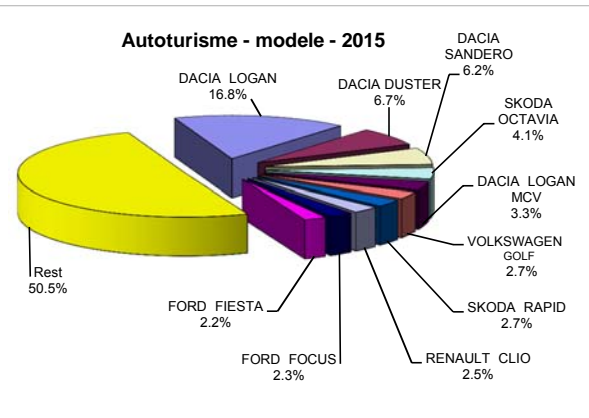
## Top livrari autoturisme - marci / Passenger car top - by make

MARCA	Octombrie		Variatie Septembrie		2015		Variatie 2014	
	pozitie	unitati	pozitie	procent	pozitie	unitati	pozitie	procent
DACIA	1	3444	1	24.6%	1	27986	1	24.4%
VOLKSWAGEN	2	1021	3	42.6%	2	7960	2	10.2%
SKODA	3	981	2	28.7%	3	7245	3	10.6%
FORD	4	637	5	37.3%	4	4991	4	3.8%
RENAULT	5	636	4	30.1%	5	4832	5	3.0%
OPEL	7	314	6	8.3%	6	2953	6	-4.0%
TOYOTA	6	353	7	30.3%	7	2358	8	19.8%
HYUNDAI	8	307	9	30.6%	8	2332	7	11.6%
FIAT	10	220	11	10.0%	9	2029	12	43.3%
MERCEDES BENZ *)	9	234	14	34.5%	10	1923	9	16.8%
Rest		1933		7.8%		15130		17.6%
<b>TOTAL</b>		<b>10080</b>		<b>23.5%</b>		<b>79739</b>		<b>15.9%</b>



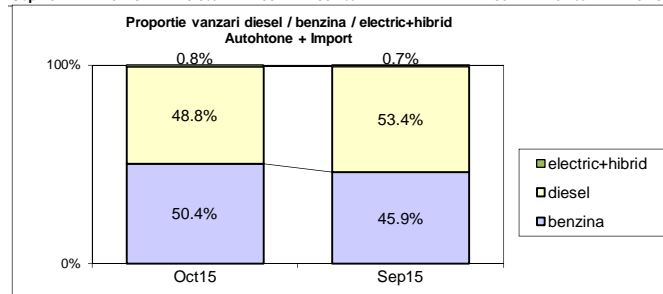
## Top livrari autoturisme - modele / Passenger car top - by model

MODEL	Octombrie		Variatie Septembrie		2015		Variatie 2014	
	pozitie	unitati	pozitie	procent	pozitie	unitati	pozitie	procent
DACIA LOGAN	1	1847	1	57.9%	1	13379	1	36.1%
DACIA DUSTER	2	651	3	33.4%	2	5366	2	24.1%
DACIA SANDERO	5	453	2	-34.8%	3	4926	3	16.3%
SKODA OCTAVIA	4	457	4	49.8%	4	3298	4	12.5%
DACIA LOGAN MCV	7	323	6	36.9%	5	2612	6	13.6%
VOLKSWAGEN GOLF	11	169	7	-27.5%	6	2172	5	-9.2%
SKODA RAPID	8	282	8	32.4%	7	2163	7	-1.5%
RENAULT CLIO	6	331	5	34.6%	8	1997	9	16.2%
FORD FOCUS	9	230	9	27.8%	9	1852	11	31.4%
FORD FIESTA	10	211	11	41.6%	10	1721	8	-20.2%
Rest		5126		20.8%		40253		13.9%
<b>TOTAL</b>		<b>10080</b>		<b>23.5%</b>		<b>79739</b>		<b>15.9%</b>

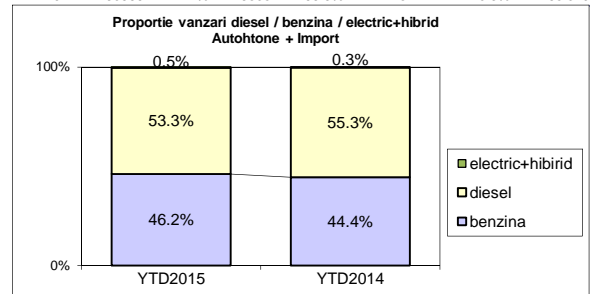


**Segmentare dupa tipul de combustibil / Segmentation by type of fuel**  
**Autohtone + Import / Domestic + Imported**

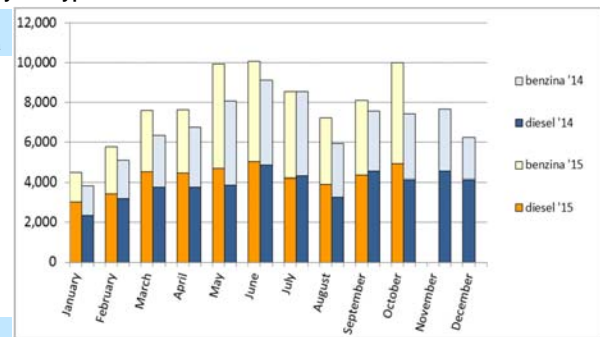
	benzina		diesel		electric+hibrid		total
Oct-15	5078	50.4%	4923	48.8%	79	0.8%	10 080
Sep-15	3745	45.9%	4354	53.4%	60	0.7%	8 159



	benzina		diesel		electric+hibrid		total
YTD2015	36825	46.2%	42503	53.3%	411	0.5%	79 739
YTD2014	30566	44.4%	38081	55.3%	182	0.3%	68 829


**Livrari autoturisme in functie de tipul de combustibil / Passenger car sales by fuel type**

Luna/An	2015		Pondere		2014		Variatie 15/14	
	diesel	benzina	diesel	benzina	diesel	benzina	diesel	benzina
January	3 029	1 447	67.4%	32.2%	2 364	1 480	28.1%	-2.2%
February	3 429	2 333	59.3%	40.3%	3 208	1 885	6.9%	23.8%
March	4 505	3 106	59.0%	40.7%	3 757	2 575	19.9%	20.6%
April	4 434	3 204	57.8%	41.8%	3 762	2 983	17.9%	7.4%
May	4 677	5 240	46.9%	52.5%	3 883	4 173	20.4%	25.6%
June	5 015	5 043	49.6%	49.9%	4 853	4 251	3.3%	18.6%
July	4 213	4 334	49.1%	50.5%	4 297	4 257	-2.0%	1.8%
August	3 924	3 295	54.2%	45.5%	3 264	2 686	20.2%	22.7%
September	4 354	3 745	53.4%	45.9%	4 546	3 005	-4.2%	24.6%
October	4 923	5 078	48.8%	50.4%	4 147	3 271	18.7%	55.2%
November	-	-	-	-	4 541	3 130	-	-
December	-	-	-	-	4 150	2 104	-	-
<b>Total</b>	<b>42 503</b>	<b>36 825</b>	<b>53.3%</b>	<b>46.2%</b>	<b>38 081</b>	<b>30 566</b>	<b>11.6%</b>	<b>20.5%</b>


**Top 10 Autoturisme in functie de tipul de alimentare - marci / Top 10 passenger car sales by fuel type and make**
**Top 10 diesel - marci**

MARCA	Octombrie 2015	10 luni 2015	Pondere %	Variatie an precedent %	Pondere diesel/total
DACIA	1398	12062	28.4%	15.0%	43.1%
VOLKSWAGEN	414	4787	11.3%	0.0%	60.1%
SKODA	611	4492	10.6%	19.7%	62.0%
FORD	385	3168	7.5%	1.0%	63.5%
RENAULT	351	3089	7.3%	-2.1%	63.9%
MERCEDES BENZ *)	214	1655	3.9%	12.1%	86.1%
BMW	120	1367	3.2%	27.8%	91.4%
OPEL	141	1334	3.1%	-3.9%	45.2%
AUDI	118	1245	2.9%	12.2%	76.2%
NISSAN	139	1197	2.8%	60.5%	66.1%
Rest	1032	8107	19.1%	16.3%	47.9%
<b>TOTAL</b>	<b>4923</b>	<b>42503</b>	<b>100%</b>	<b>11.6%</b>	<b>53.3%</b>

\*) Estimari APIA / APIA Estimates

**Top 10 benzina - marci**

MARCA	Octombrie 2015	10 luni 2015	Pondere %	Variatie an precedent %	Pondere benzina/total
DACIA	2046	15924	43.2%	32.6%	56.9%
VOLKSWAGEN	607	3168	8.6%	30.0%	39.8%
SKODA	370	2753	7.5%	-1.5%	38.0%
FORD	251	1822	4.9%	9.2%	36.5%
RENAULT	284	1734	4.7%	12.9%	35.9%
OPEL	173	1618	4.4%	-4.0%	54.8%
HYUNDAI	168	1515	4.1%	13.1%	65.0%
TOYOTA	218	1504	4.1%	30.6%	63.8%
FIAT	135	1137	3.1%	41.8%	56.0%
SUZUKI	138	806	2.2%	-21.0%	88.9%
Rest	688	4844	13.2%	17.5%	30.0%
<b>TOTAL</b>	<b>5078</b>	<b>36825</b>	<b>100%</b>	<b>20.5%</b>	<b>46.2%</b>

\*) Estimari APIA / APIA Estimates

**Top 10 Autoturisme in functie de tipul de alimentare - modele / Top 10 passenger car sales by fuel type and model**
**Top 10 diesel - model**

MODEL	Octombrie 2015	10 luni 2015	Pondere %	Variatie an precedent %	Pondere diesel/total
DACIA DUSTER	513	4546	10.7%	31.1%	84.7%
DACIA LOGAN	347	2991	7.0%	3.2%	22.4%
SKODA OCTAVIA	347	2525	5.9%	15.9%	76.6%
DACIA SANDERO	222	1672	3.9%	14.1%	33.9%
VOLKSWAGEN GOLF	103	1472	3.5%	-9.4%	67.8%
DACIA LOGAN MCV	167	1445	3.4%	21.0%	55.3%
VOLKSWAGEN PASSAT	128	1244	2.9%	8.5%	95.8%
SKODA RAPID	143	1165	2.7%	54.9%	53.9%
FORD FIESTA	124	1135	2.7%	-20.7%	66.0%
RENAULT CLIO	143	1037	2.4%	17.6%	51.9%
Rest	2686	23271	54.8%	10.6%	57.0%
<b>TOTAL</b>	<b>4923</b>	<b>42503</b>	<b>100%</b>	<b>11.6%</b>	<b>53.3%</b>

\*) Estimari APIA / APIA Estimates

**Top 10 benzina - model**

MODEL	Octombrie 2015	10 luni 2015	Pondere %	Variatie an precedent %	Pondere benzina/total
DACIA LOGAN	1500	10388	28.2%	49.8%	77.6%
DACIA SANDERO	231	3254	8.8%	17.4%	66.1%
VOLKSWAGEN POLO	450	1250	3.4%	18.6%	79.4%
DACIA LOGAN MCV	156	1167	3.2%	5.6%	44.7%
SKODA RAPID	139	998	2.7%	-30.8%	46.1%
RENAULT CLIO	188	960	2.6%	14.8%	48.1%
FORD FOCUS	99	891	2.4%	53.4%	48.1%
DACIA DUSTER	138	820	2.2%	-4.2%	15.3%
SKODA FABIA	89	797	2.2%	117.8%	74.3%
SKODA OCTAVIA	110	773	2.1%	2.7%	23.4%
Rest	1978	15527	42.2%	12.0%	37.4%
<b>TOTAL</b>	<b>5078</b>	<b>36825</b>	<b>100%</b>	<b>20.5%</b>	<b>46.2%</b>

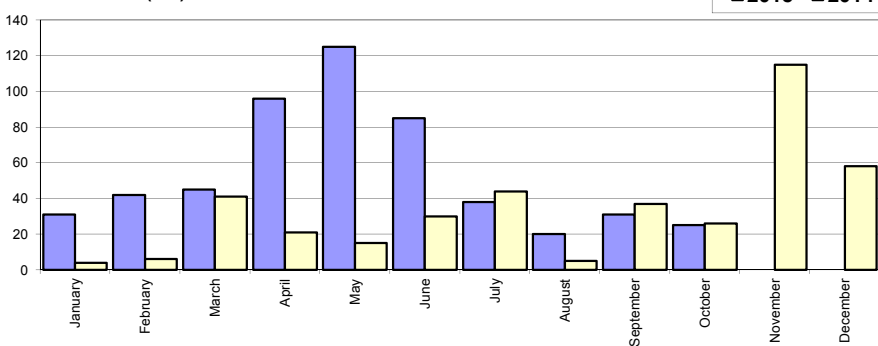
\*) Estimari APIA / APIA Estimates

## Livrari comerciale usoare + minibus autohtone / Domestic LCV + minibus sales

Luna/An	2015	2014	Variatie
January	31	4	675.0%
February	42	6	600.0%
March	45	41	9.8%
April	96	21	357.1%
May	125	15	733.3%
June	85	30	183.3%
July	38	44	-13.6%
August	20	5	300.0%
September	31	37	-16.2%
October	25	26	-3.8%
November	-	115	-
December	-	58	-
<b>Total</b>	<b>538</b>	<b>229</b>	<b>134.9%</b>

402

Livrari autohtone (buc)

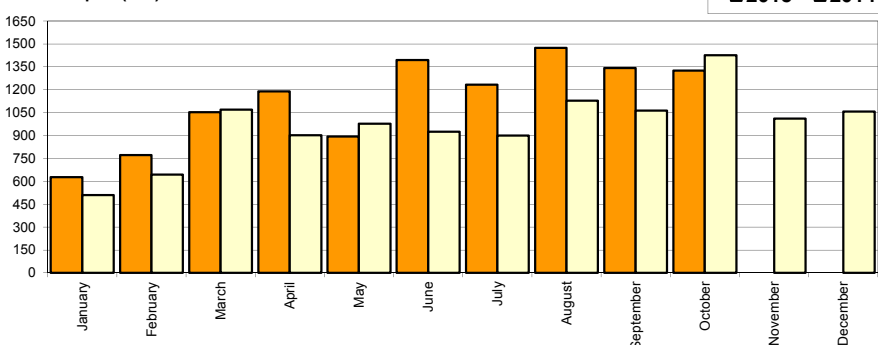


## Livrari comerciale usoare + minibus import / Imported LCV + minibus sales

Luna/An	2015	2014	Variatie
January	628	511	22.9%
February	772	645	19.7%
March	1 053	1 069	-1.5%
April	1 189	903	31.7%
May	894	978	-8.6%
June	1 394	925	50.7%
July	1 234	900	37.1%
August	1 474	1 128	30.7%
September	1 342	1 063	26.2%
October	1 325	1 426	-7.1%
November	-	1 011	-
December	-	1 058	-
<b>Total</b>	<b>11 305</b>	<b>9 548</b>	<b>18.4%</b>

11 617

Livrari import (buc)

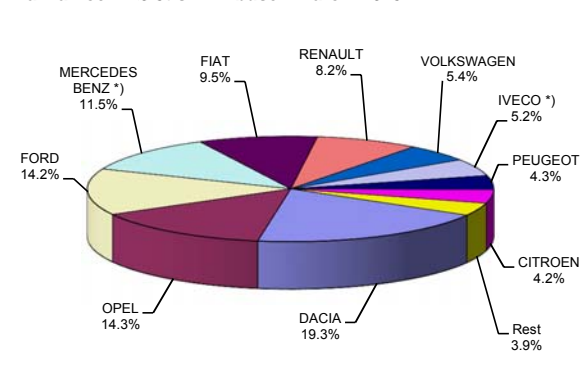


## Livrari comerciale &lt;3.5t si minibus - marci / LCV + minibus sales by make

MARCA	Octombrie		Variatie Septembrie		2015		Variatie 2014	
	pozitie	unitati	pozitie	procent	pozitie	unitati	pozitie	procent
DACIA	1	366	2	81.2%	1	<b>2280</b>	1	8.5%
OPEL	10	37	4	-79.0%	2	<b>1699</b>	6	111.9%
FORD	4	159	3	-16.3%	3	<b>1685</b>	3	53.9%
MERCEDES BENZ *)	2	189	1	-8.7%	4	<b>1358</b>	2	20.3%
FIAT	3	180	5	31.4%	5	<b>1123</b>	5	33.1%
RENAULT	5	119	6	-3.3%	6	<b>974</b>	4	15.1%
VOLKSWAGEN	9	54	9	-8.5%	7	<b>636</b>	7	-19.4%
IVECO *)	8	58	7	-50.4%	8	<b>619</b>	11	113.5%
PEUGEOT	6	71	10	31.5%	9	<b>510</b>	8	-25.9%
CITROEN	7	62	8	-21.5%	10	<b>495</b>	9	-2.2%
Rest		55		89.7%		<b>464</b>		-32.5%
<b>TOTAL</b>		<b>1350</b>		<b>-1.7%</b>		<b>11843</b>		<b>21.1%</b>

\*) Estimari APIA / APIA Estimates

Vanzari com &lt;3.5t si minibus - marci - 2015



## Livrari comerciale &lt;3.5t si minibus - modele / LCV + minibus sales by model

MODEL	Octombrie		Variatie Septembrie		2015		Variatie 2014	
	pozitie	unitati	pozitie	procent	pozitie	unitati	pozitie	procent
DACIA DOKKER VAN	1	341	1	99.4%	1	<b>1742</b>	1	-6.9%
OPEL MOVANO	27	9	2	-94.4%	2	<b>1482</b>	2	117.0%
FORD TRANSIT	4	74	9	10.5%	3	<b>917</b>	3	48.9%
FIAT DUCATO	2	136	5	34.7%	4	<b>890</b>	6	71.2%
MERCEDES BENZ *) SPRINTER	3	84	3	-29.4%	5	<b>716</b>	5	34.8%
IVECO *) DAILY	8	56	4	-52.1%	6	<b>617</b>	10	112.8%
RENAULT MASTER	7	62	6	-27.9%	7	<b>596</b>	8	46.1%
DACIA DUSTER VU	18	16	13	-40.7%	8	<b>469</b>	15	150.8%
PEUGEOT BOXER	6	66	11	29.4%	9	<b>433</b>	4	-25.5%
CITROEN JUMPER	9	56	7	-26.3%	10	<b>429</b>	7	3.1%
Rest		450		13.1%		<b>3552</b>		-3.3%
<b>TOTAL</b>		<b>1350</b>		<b>-1.7%</b>		<b>11843</b>		<b>21.1%</b>

\*) Estimari APIA / APIA Estimates

Vanzari com &lt;3.5t si minibus - modele - 2015

