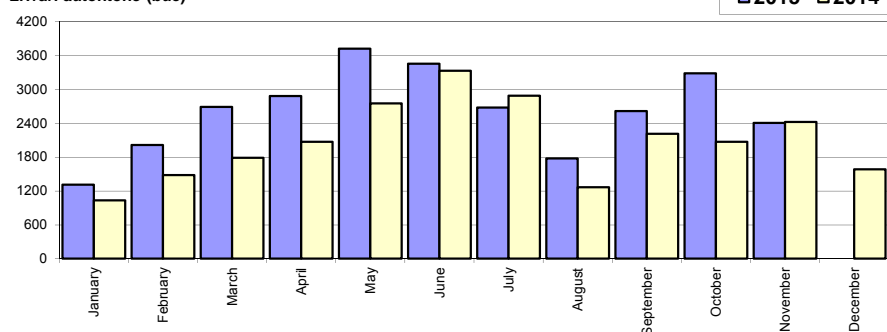


Livrari autoturisme autohtone / Domestic passenger car sales

Luna/An	2015	2014	Variatie
January	1 310	1 034	26.7%
February	2 012	1 481	35.9%
March	2 689	1 785	50.6%
April	2 878	2 067	39.2%
May	3 716	2 749	35.2%
June	3 448	3 326	3.7%
July	2 673	2 885	-7.3%
August	1 772	1 265	40.1%
September	2 612	2 209	18.2%
October	3 283	2 069	58.7%
November	2 404	2 423	-0.8%
December	-	1 582	-
Total	28 797	23 293	23.6%

24 875

Livrari autohtone (buc)

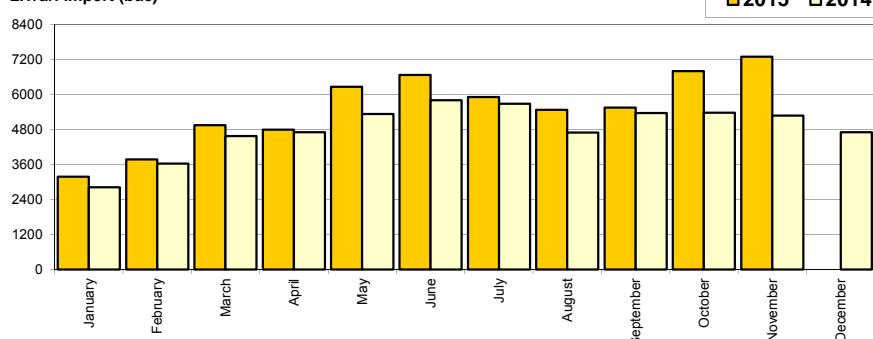


Livrari autoturisme import / Imported passenger car sales

Luna/An	2015	2014	Variatie
January	3 183	2 821	12.8%
February	3 772	3 627	4.0%
March	4 942	4 572	8.1%
April	4 793	4 701	2.0%
May	6 260	5 330	17.4%
June	6 664	5 797	15.0%
July	5 915	5 682	4.1%
August	5 473	4 694	16.6%
September	5 547	5 361	3.5%
October	6 797	5 374	26.5%
November	7 294	5 272	38.4%
December	-	4 702	-
Total	60 640	53 231	13.9%

57 933

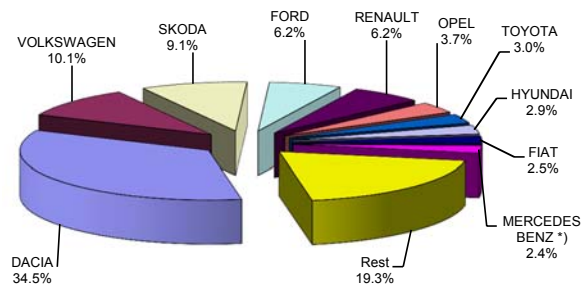
Livrari import (buc)



Top livrari autoturisme - marci / Passenger car top - by make

MARCA	Noiembrie		Variatie Octombrie		2015		Variatie 2014	
	pozitie	unitati	pozitie	procent	pozitie	unitati	pozitie	procent
DACIA	1	2856	1	-17.1%	1	30842	1	22.5%
VOLKSWAGEN	2	1117	2	9.4%	2	9077	2	13.5%
SKODA	3	901	3	-8.2%	3	8146	3	12.0%
FORD	5	559	4	-12.2%	4	5550	5	5.6%
RENAULT	4	680	5	6.9%	5	5512	4	4.0%
OPEL	7	329	7	4.8%	6	3282	6	-2.4%
TOYOTA	6	362	6	2.6%	7	2720	8	23.8%
HYUNDAI	8	285	8	-7.2%	8	2617	7	15.5%
FIAT	11	239	10	8.6%	9	2268	13	48.1%
MERCEDES BENZ *)	9	264	9	12.8%	10	2187	9	17.9%
Rest		2106		8.9%		17236		20.3%
TOTAL		9698		-3.8%		89437		16.9%

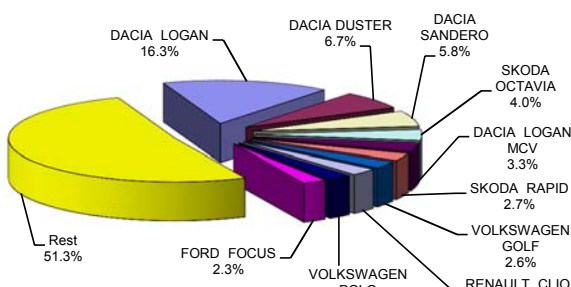
Autoturisme - marci - 2015



Top livrari autoturisme - modele / Passenger car top - by model

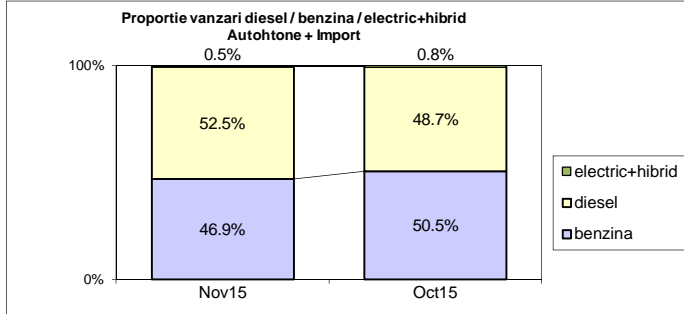
MODEL	Noiembrie		Variatie Octombrie		2015		Variatie 2014	
	pozitie	unitati	pozitie	procent	pozitie	unitati	pozitie	procent
DACIA LOGAN	1	1179	1	-36.2%	1	14558	1	35.5%
DACIA DUSTER	2	599	2	-8.0%	2	5965	2	11.5%
DACIA SANDERO	7	304	5	-32.9%	3	5230	3	13.7%
SKODA OCTAVIA	8	304	4	-33.5%	4	3602	4	12.3%
DACIA LOGAN MCV	6	316	7	-2.2%	5	2928	7	21.1%
SKODA RAPID	9	277	8	-1.8%	6	2440	8	1.8%
VOLKSWAGEN GOLF	12	176	11	4.1%	7	2348	5	-8.7%
RENAULT CLIO	5	323	6	-2.4%	8	2320	9	18.2%
VOLKSWAGEN POLO	3	498	3	4.8%	9	2073	13	43.9%
FORD FOCUS	10	221	9	-3.9%	10	2073	11	38.4%
Rest		5501		13.1%		45900		13.8%
TOTAL		9698		-3.8%		89437		16.9%

Autoturisme - modele - 2015

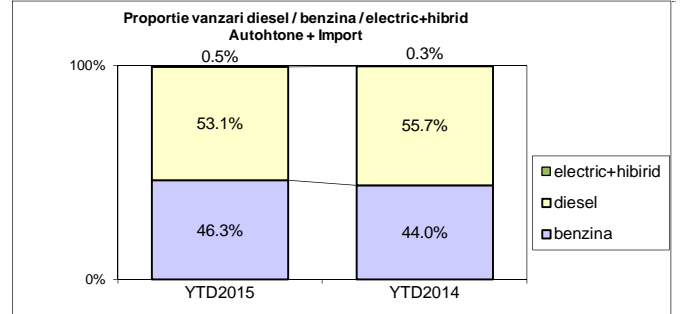


Segmentare dupa tipul de combustibil / Segmentation by type of fuel
Autohtone + Import / Domestic + Imported

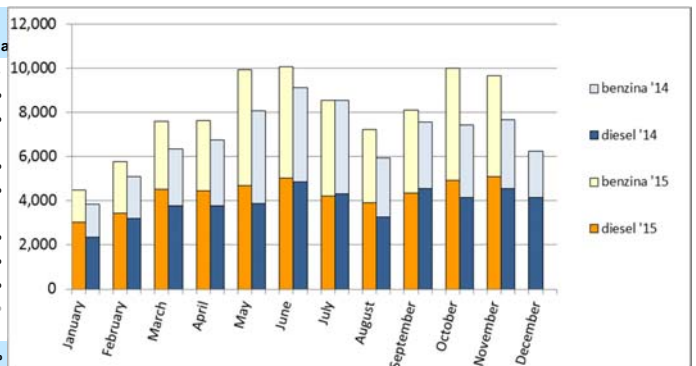
	benzina		diesel		electric+hibrid		total
Nov-15	4552	46.9%	5094	52.5%	52	0.5%	9 698
Oct-15	5090	50.5%	4911	48.7%	79	0.8%	10 080



	benzina		diesel		electric+hibrid		total
YTD2015	41446	46.3%	47528	53.1%	463	0.5%	89 437
YTD2014	33696	44.0%	42622	55.7%	206	0.3%	76 524


Livrari autoturisme in functie de tipul de combustibil / Passenger car sales by fuel type

Luna/An	2015		Pondere		2014		Variatie 15/14	
	diesel	benzina	diesel	benzina	diesel	benzina	diesel	benzina
January	3 029	1 447	67.4%	32.2%	2 364	1 480	28.1%	-2.2%
February	3 429	2 333	59.3%	40.3%	3 208	1 885	6.9%	23.8%
March	4 505	3 106	59.0%	40.7%	3 757	2 575	19.9%	20.6%
April	4 434	3 204	57.8%	41.8%	3 762	2 983	17.9%	7.4%
May	4 677	5 240	46.9%	52.5%	3 883	4 173	20.4%	25.6%
June	5 015	5 043	49.6%	49.9%	4 853	4 251	3.3%	18.6%
July	4 213	4 334	49.1%	50.5%	4 297	4 257	-2.0%	1.8%
August	3 924	3 295	54.2%	45.5%	3 264	2 686	20.2%	22.7%
September	4 297	3 802	52.7%	46.6%	4 546	3 005	-5.5%	26.5%
October	4 911	5 090	48.7%	50.5%	4 147	3 271	18.4%	55.6%
November	5 094	4 552	52.5%	46.9%	4 541	3 130	12.2%	45.4%
December	-	-	-	-	4 150	2 104	-	-
Total	47 528	41 446	53.1%	46.3%	42 622	33 696	11.5%	23.0%


Top 10 Autoturisme in functie de tipul de alimentare - marci / Top 10 passenger car sales by fuel type and make
Top 10 diesel - marci

MARCA	Noiembrie 2015	11 luni 2015	Pondere %	Variatie an precedent %	Pondere diesel/total
DACIA	1650	13712	28.9%	16.2%	44.5%
VOLKSWAGEN	437	5224	11.0%	-0.8%	57.6%
SKODA	467	4959	10.4%	19.4%	60.9%
RENAULT	408	3497	7.4%	-3.0%	63.4%
FORD	260	3428	7.2%	-0.9%	61.8%
MERCEDES BENZ *)	209	1864	3.9%	11.9%	85.2%
BMW	165	1532	3.2%	24.4%	92.1%
OPEL	156	1490	3.1%	-3.2%	45.4%
AUDI	132	1377	2.9%	9.0%	76.5%
NISSAN	143	1340	2.8%	52.6%	66.5%
Rest	1067	9105	19.2%		47.0%
TOTAL	5094	47528	100%	11.5%	53.1%

*) Estimari APIA / APIA Estimates

Top 10 benzina - marci

MARCA	Noiembrie 2015	11 luni 2015	Pondere %	Variatie an precedent %	Pondere benzina/total
DACIA	1206	17130	41.3%	28.1%	55.5%
VOLKSWAGEN	680	3848	9.3%	41.0%	42.4%
SKODA	434	3187	7.7%	2.2%	39.1%
FORD	299	2121	5.1%	18.0%	38.2%
RENAULT	271	2005	4.8%	18.4%	36.4%
OPEL	173	1791	4.3%	-1.6%	54.6%
TOYOTA	242	1746	4.2%	37.4%	64.2%
HYUNDAI	170	1685	4.1%	18.6%	64.4%
FIAT	148	1285	3.1%	51.4%	56.7%
SUZUKI	216	1022	2.5%	-8.2%	88.5%
Rest	713	5626	13.6%		30.8%
TOTAL	4552	41446	100%	23.0%	46.3%

*) Estimari APIA / APIA Estimates

Top 10 Autoturisme in functie de tipul de alimentare - modele / Top 10 passenger car sales by fuel type and model
Top 10 diesel - model

MODEL	Noiembrie 2015	11 luni 2015	Pondere %	Variatie an precedent %	Pondere diesel/total
DACIA DUSTER	431	4977	10.5%	24.2%	83.4%
DACIA LOGAN	410	3401	7.2%	3.9%	23.4%
SKODA OCTAVIA	250	2775	5.8%	15.4%	77.0%
DACIA SANDERO	158	1830	3.9%	15.3%	35.0%
DACIA LOGAN MCV	221	1666	3.5%	31.7%	56.9%
VOLKSWAGEN GOLF	83	1555	3.3%	-9.6%	66.2%
VOLKSWAGEN PASSAT	122	1366	2.9%	5.2%	95.9%
DACIA DOKKER	364	1324	2.8%	9.9%	86.0%
SKODA RAPID	88	1253	2.6%	49.9%	51.4%
RENAULT CLIO	186	1223	2.6%	16.0%	52.7%
Rest	2781	26158	55.0%		55.6%
TOTAL	5094	47528	100%	11.5%	53.1%

*) Estimari APIA / APIA Estimates

Top 10 benzina - model

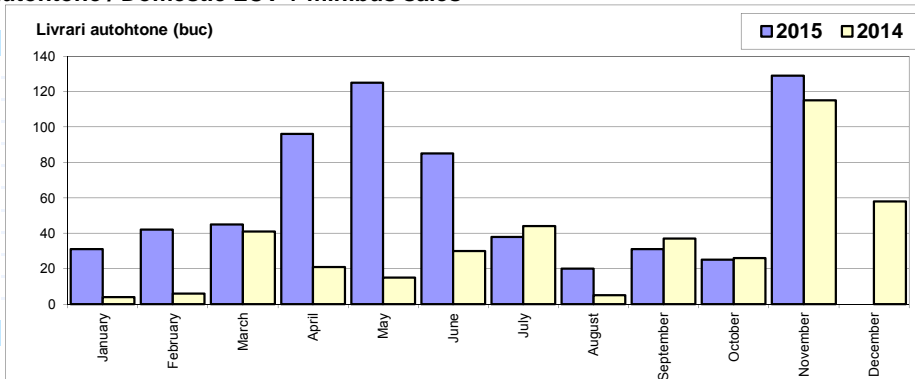
MODEL	Noiembrie 2015	11 luni 2015	Pondere %	Variatie an precedent %	Pondere benzina/total
DACIA LOGAN	769	11157	26.9%	49.4%	76.6%
DACIA SANDERO	146	3400	8.2%	12.9%	65.0%
VOLKSWAGEN POLO	485	1735	4.2%	49.4%	83.7%
DACIA LOGAN MCV	95	1262	3.0%	9.5%	43.1%
SKODA RAPID	189	1187	2.9%	-23.9%	48.6%
RENAULT CLIO	137	1097	2.6%	20.7%	47.3%
FORD FOCUS	133	1024	2.5%	64.9%	49.4%
DACIA DUSTER	168	988	2.4%	-26.3%	16.6%
SKODA FABIA	137	934	2.3%	132.3%	72.7%
SKODA OCTAVIA	54	827	2.0%	2.9%	23.0%
Rest	2239	17835	43.0%		38.0%
TOTAL	4552	41446	100%	23.0%	46.3%

*) Estimari APIA / APIA Estimates

Livrari comerciale usoare + minibusse autohtone / Domestic LCV + minibus sales

Luna/An	2015	2014	Variatie
January	31	4	675.0%
February	42	6	600.0%
March	45	41	9.8%
April	96	21	357.1%
May	125	15	733.3%
June	85	30	183.3%
July	38	44	-13.6%
August	20	5	300.0%
September	31	37	-16.2%
October	25	26	-3.8%
November	129	115	12.2%
December	-	58	-
Total	667	344	93.9%

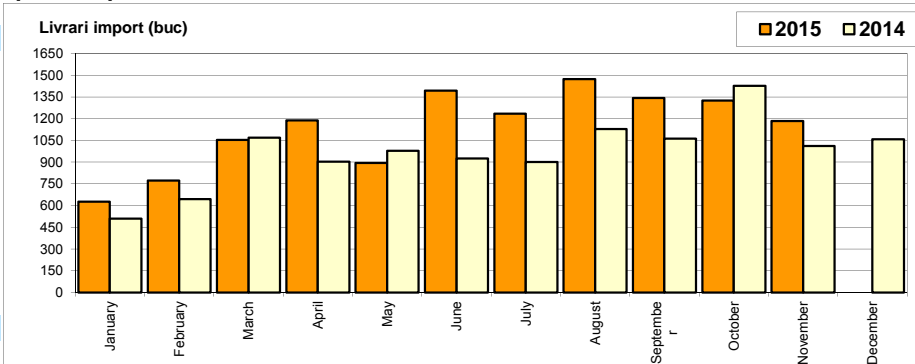
402



Livrari comerciale usoare + minibusse import / Imported LCV + minibus sales

Luna/An	2015	2014	Variatie
January	628	511	22.9%
February	772	645	19.7%
March	1 053	1 069	-1.5%
April	1 189	903	31.7%
May	894	978	-8.6%
June	1 394	925	50.7%
July	1 234	900	37.1%
August	1 474	1 128	30.7%
September	1 342	1 063	26.2%
October	1 325	1 426	-7.1%
November	1 184	1 011	17.1%
December	-	1 058	-
Total	12 489	10 559	18.3%

11 617

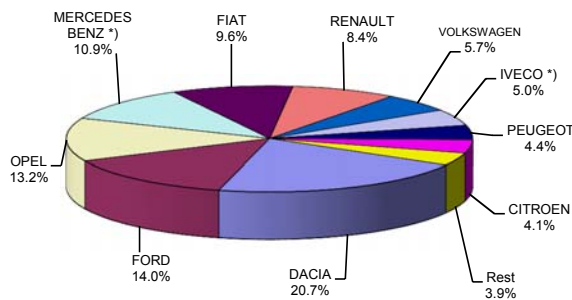


Livrari comerciale <3.5t si minibusse - marci / LCV + minibus sales by make

MARCA	Noiembrie		Variatie Octombrie		2015		Variatie 2014	
	pozitie	unitati	pozitie	procent	pozitie	unitati	pozitie	procent
DACIA	1	441	1	20.5%	1	2721	1	11.8%
FORD	2	163	4	2.5%	2	1848	3	51.0%
OPEL	9	39	10	5.4%	3	1738	7	114.6%
MERCEDES BENZ *)	6	78	2	-58.7%	4	1436	2	16.3%
FIAT	3	146	3	-18.9%	5	1269	4	34.4%
RENAULT	4	133	5	11.8%	6	1107	5	18.8%
VOLKSWAGEN	5	113	9	109.3%	7	749	6	-13.7%
IVECO *)	10	39	8	-32.8%	8	658	11	96.4%
PEUGEOT	7	69	6	-2.8%	9	579	8	-22.1%
CITROEN	8	47	7	-24.2%	10	542	9	-10.0%
Rest		45		-18.2%		509		-34.5%
TOTAL		1313		-2.8%		13156		20.7%

*) Estimari APIA / APIA Estimates

Vanzari com <3.5t si minibusse - marci - 2015



Livrari comerciale <3.5t si minibusse - modele / LCV + minibus sales by model

MODEL	Noiembrie		Variatie Octombrie		2015		Variatie 2014	
	pozitie	unitati	pozitie	procent	pozitie	unitati	pozitie	procent
DACIA DOKKER VAN	1	312	1	-8.5%	1	2054	1	-1.7%
OPEL MOVANO	19	18	27	100.0%	2	1500	3	118.7%
FIAT DUCATO	3	114	2	-16.2%	3	1004	5	73.4%
FORD TRANSIT	4	77	4	4.1%	4	994	2	40.8%
MERCEDES BENZ *) SPRINTER	13	29	3	-65.5%	5	745	6	30.5%
RENAULT MASTER	6	66	7	6.5%	6	662	8	47.8%
IVECO *) DAILY	8	39	8	-30.4%	7	656	10	95.8%
DACIA DUSTER VU	2	115	18	618.8%	8	584	11	96.0%
PEUGEOT BOXER	5	67	6	1.5%	9	500	4	-20.0%
CITROEN JUMPER	7	41	9	-26.8%	10	470	7	-6.9%
Rest		435		-3.3%		3987		-1.8%
TOTAL		1313		-2.8%		13156		20.7%

*) Estimari APIA / APIA Estimates

Vanzari com <3.5t si minibusse - modele - 2015

