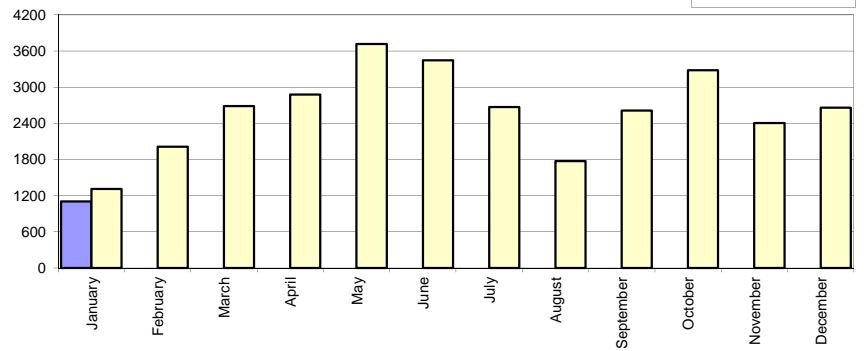


**Livrari autoturisme autohtone / Domestic passenger car sales**

Luna/An	2016	2015	Variatie
January	1 103	1 310	-15.8%
February	-	2 012	-
March	-	2 689	-
April	-	2 878	-
May	-	3 716	-
June	-	3 448	-
July	-	2 673	-
August	-	1 772	-
September	-	2 612	-
October	-	3 283	-
November	-	2 404	-
December	-	2 660	-
<b>Total</b>	<b>1 103</b>	<b>1 310</b>	<b>-15.8%</b>

31 457

Livrari autohtone (buc)

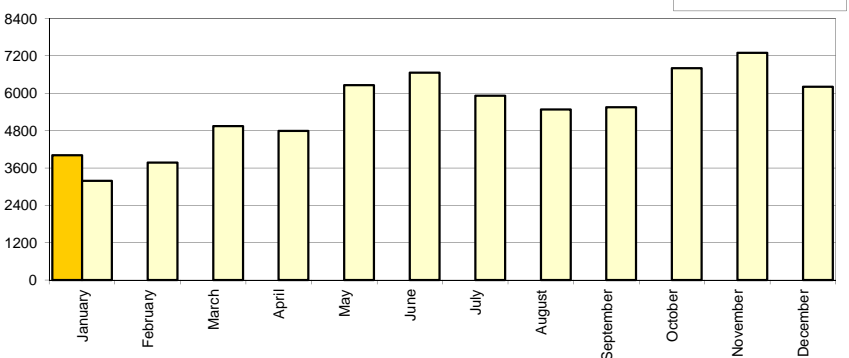


**Livrari autoturisme import / Imported passenger car sales**

Luna/An	2016	2015	Variatie
January	4 008	3 183	25.9%
February	-	3 775	-
March	-	4 942	-
April	-	4 791	-
May	-	6 257	-
June	-	6 664	-
July	-	5 918	-
August	-	5 478	-
September	-	5 551	-
October	-	6 803	-
November	-	7 296	-
December	-	6 208	-
<b>Total</b>	<b>4 008</b>	<b>3 183</b>	<b>25.9%</b>

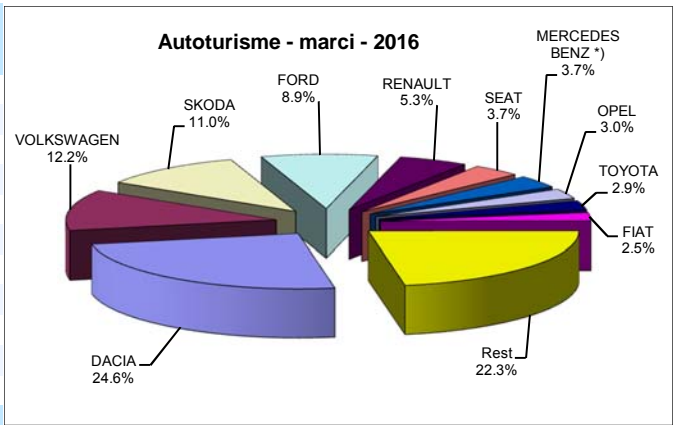
66 866

Livrari import (buc)



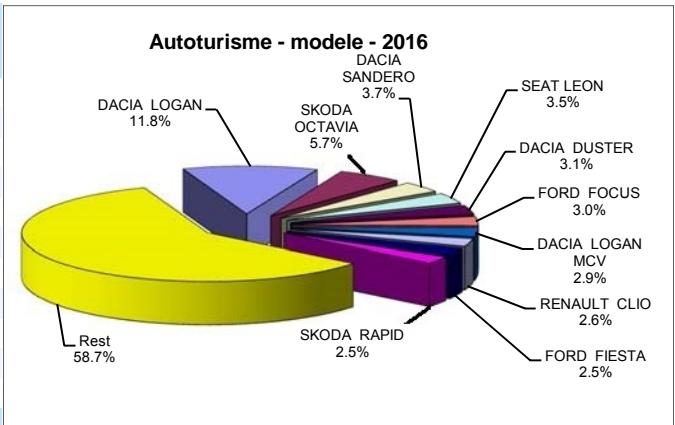
**Top livrari autoturisme - marci / Passenger car top - by make**

MARCA	Ianuarie		Decembrie		2016		Variatie2015	
	pozitie	unitati	pozitie	procent	pozitie	unitati	pozitie	procent
DACIA	1	1258	1	-58.7%	1	1258	1	-6.5%
VOLKSWAGEN	2	621	2	-13.0%	2	621	3	36.2%
SKODA	3	563	3	-19.9%	3	563	2	8.7%
FORD	4	457	4	-11.6%	4	457	4	41.1%
RENAULT	5	272	5	-46.5%	5	272	5	0.0%
SEAT	6	190	17	26.7%	6	190	11	72.7%
MERCEDES BENZ *)	7	187	8	-32.7%	7	187	12	70.0%
OPEL	8	152	6	-55.8%	8	152	6	-39.4%
TOYOTA	9	146	14	-22.8%	9	146	8	25.9%
FIAT	10	127	7	-60.1%	10	127	9	11.4%
Rest		1138		-45.8%		1138		
<b>TOTAL</b>		<b>5111</b>		<b>-42.4%</b>		<b>5111</b>		<b>13.8%</b>



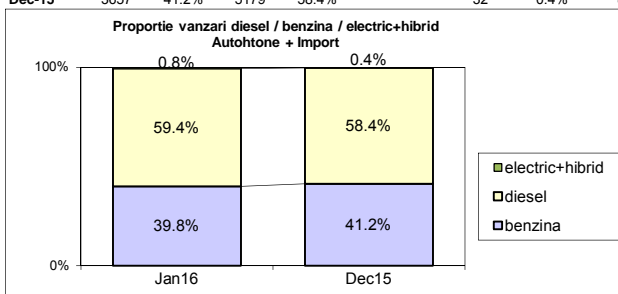
**Top livrari autoturisme - modele / Passenger car top - by model**

MODEL	Ianuarie		Decembrie		2016		Variatie2015	
	pozitie	unitati	pozitie	procent	pozitie	unitati	pozitie	procent
DACIA LOGAN	1	601	1	-58.9%	1	601	1	27.3%
SKODA OCTAVIA	2	291	4	-8.8%	2	291	3	1.8%
DACIA SANDERO	3	189	3	-43.1%	3	189	5	18.9%
SEAT LEON	4	181	32	178.5%	4	181	11	94.6%
DACIA DUSTER	5	157	2	-76.8%	5	157	2	-63.6%
FORD FOCUS	6	155	13	-6.1%	6	155	8	39.6%
DACIA LOGAN MCV	7	150	9	-18.0%	7	150	4	-34.2%
RENAULT CLIO	8	132	7	-32.3%	8	132	12	51.7%
FORD FIESTA	9	129	12	-22.3%	9	129	13	51.8%
SKODA RAPID	10	128	6	-54.1%	10	128	6	-5.9%
Rest		2998		-40.3%		2998		
<b>TOTAL</b>		<b>5111</b>		<b>-42.4%</b>		<b>5111</b>		<b>13.8%</b>

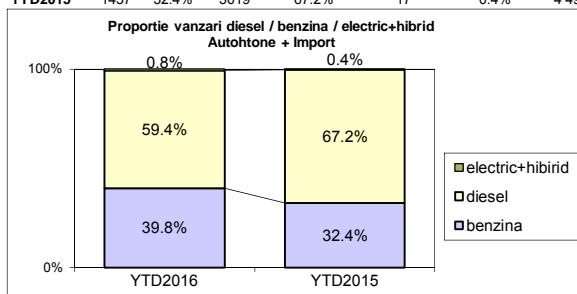


**Segmentare dupa tipul de combustibil / Segmentation by type of fuel**  
**Autohtone + Import / Domestic + Imported**

	benzina		diesel		electric+hibrid		total
Jan-16	2036	39.8%	3036	59.4%	39	0.8%	5 111
Dec-15	3657	41.2%	5179	58.4%	32	0.4%	8 868



	benzina		diesel		electric+hibrid		total
YTD2016	2036	39.8%	3036	59.4%	39	0.8%	5 111
YTD2015	1457	32.4%	3019	67.2%	17	0.4%	4 493


**Livrari autoturisme in functie de tipul de combustibil / Passenger car sales by fuel type**

Luna/An	2016		Pondere		2015		Variatie 16/15	
	diesel	benzina	diesel	benzina	diesel	benzina	diesel	benzina
January	3 036	2 036	59.4%	39.8%	3 019	1 457	0.6%	39.7%
February	-	-	-	-	3 430	2 335	-	-
March	-	-	-	-	4 504	3 107	-	-
April	-	-	-	-	4 432	3 204	-	-
May	-	-	-	-	4 671	5 243	-	-
June	-	-	-	-	5 010	5 048	-	-
July	-	-	-	-	4 212	4 338	-	-
August	-	-	-	-	3 925	3 298	-	-
September	-	-	-	-	4 278	3 825	-	-
October	-	-	-	-	4 895	5 112	-	-
November	-	-	-	-	5 072	4 576	-	-
December	-	-	-	-	5 179	3 657	-	-
<b>Total</b>	<b>3 036</b>	<b>2 036</b>	<b>59.4%</b>	<b>39.8%</b>	<b>3 019</b>	<b>1 457</b>	<b>0.6%</b>	<b>39.7%</b>

**TOP Marci electric + hibrid**

Pozitie	MARCA	2016	2015	Pondere %	Variatie an precedent %
1	TOYOTA	24	9	61.5%	1.7%
2	LEXUS	9	4	23.1%	1.3%
3	BMW	3	0	7.7%	-
4	LAND ROVER	1	3	2.6%	-0.7%
5	RENAULT	1	0	2.6%	-
6	VOLVO	1	0	2.6%	-
7	VOLKSWAGEN	0	1	0.0%	-1.0%
	<b>TOTAL</b>	<b>39</b>	<b>17</b>	<b>100%</b>	<b>1.3%</b>

**Top 10 Autoturisme in functie de tipul de alimentare - marci / Top 10 passenger car sales by fuel type and make**
**Top 10 diesel - marci**

MARCA	Ianuarie 2016	1 luni 2016	Pondere %	Variatie an precedent %	Pondere diesel/total
DACIA	540	540	17.8%	-38.3%	42.9%
SKODA	370	370	12.2%	-7.0%	65.7%
VOLKSWAGEN	359	359	11.8%	16.6%	57.8%
FORD	348	348	11.5%	64.9%	76.1%
RENAULT	191	191	6.3%	-18.4%	70.2%
MERCEDES BENZ *)	163	163	5.4%	64.6%	87.2%
SEAT	159	159	5.2%	127.1%	83.7%
AUDI	111	111	3.7%	113.5%	92.5%
BMW	100	100	3.3%	29.9%	86.2%
LAND ROVER	100	100	3.3%	75.4%	87.0%
Rest	595	595	19.6%	-6.7%	49.1%
<b>TOTAL</b>	<b>3036</b>	<b>3036</b>	<b>100%</b>	<b>0.6%</b>	<b>59.4%</b>

\*) Estimari APIA / APIA Estimates

**Top 10 benzina - marci**

MARCA	Ianuarie 2016	1 luni 2016	Pondere %	Variatie an precedent %	Pondere benzina/total
DACIA	718	718	35.3%	52.4%	57.1%
VOLKSWAGEN	262	262	12.9%	78.2%	42.2%
SKODA	193	193	9.5%	60.8%	34.3%
FORD	109	109	5.4%	-3.5%	23.9%
OPEL	89	89	4.4%	-12.7%	58.6%
SUZUKI	83	83	4.1%	93.0%	85.6%
TOYOTA	81	81	4.0%	42.1%	55.5%
RENAULT	80	80	3.9%	110.5%	29.4%
MAZDA	72	72	3.5%	166.7%	64.3%
FIAT	70	70	3.4%	52.2%	55.1%
Rest	279	279	13.7%	-4.8%	21.4%
<b>TOTAL</b>	<b>2036</b>	<b>2036</b>	<b>100%</b>	<b>39.7%</b>	<b>39.8%</b>

\*) Estimari APIA / APIA Estimates

**Top 10 Autoturisme in functie de tipul de alimentare - modele / Top 10 passenger car sales by fuel type and model**
**Top 10 diesel - model**

MODEL	Ianuarie 2016	1 luni 2016	Pondere %	Variatie an precedent %	Pondere diesel/total
SKODA OCTAVIA	237	237	7.8%	-3.3%	81.4%
DACIA LOGAN	168	168	5.5%	-30.0%	28.0%
SEAT LEON	153	153	5.0%	135.4%	84.5%
FORD FOCUS	124	124	4.1%	77.1%	80.0%
DACIA DUSTER	108	108	3.6%	-72.7%	68.8%
VOLKSWAGEN PASSAT	95	95	3.1%	14.5%	87.2%
DACIA DOKKER	93	93	3.1%	151.4%	79.5%
DACIA LOGAN MCV	90	90	3.0%	-39.2%	60.0%
FORD FIESTA	83	83	2.7%	112.8%	64.3%
VOLKSWAGEN JETTA	77	77	2.5%	165.5%	77.8%
Rest	1808	1808	59.6%	8.4%	57.9%
<b>TOTAL</b>	<b>3036</b>	<b>3036</b>	<b>100%</b>	<b>0.6%</b>	<b>59.4%</b>

\*) Estimari APIA / APIA Estimates

**Top 10 benzina - model**

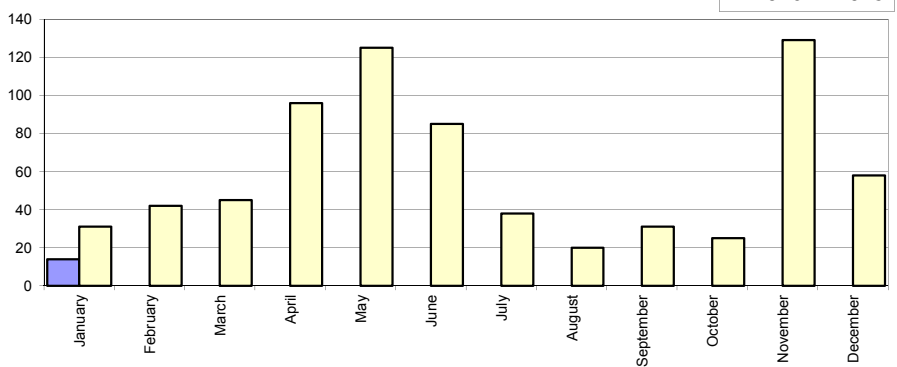
MODEL	Ianuarie 2016	1 luni 2016	Pondere %	Variatie an precedent %	Pondere benzina/total
DACIA LOGAN	433	433	21.3%	86.6%	72.0%
DACIA SANDERO	142	142	7.0%	30.3%	75.1%
VOLKSWAGEN POLO	113	113	5.6%	91.5%	95.0%
SKODA RAPID	67	67	3.3%	63.4%	52.3%
OPEL CORSA	60	60	2.9%	9.1%	100.0%
DACIA LOGAN MCV	60	60	2.9%	-25.0%	40.0%
RENAULT CLIO	57	57	2.8%	185.0%	43.2%
SKODA FABIA	55	55	2.7%	61.8%	72.4%
SKODA OCTAVIA	54	54	2.7%	31.7%	18.6%
SUZUKI VITARA	52	52	2.6%	0.0%	80.0%
Rest	943	943	46.3%	20.0%	28.6%
<b>TOTAL</b>	<b>2036</b>	<b>2036</b>	<b>100%</b>	<b>39.7%</b>	<b>39.8%</b>

\*) Estimari APIA / APIA Estimates

## Livrarile comerciale usoare + minibus autohtone / Domestic LCV + minibus sales

Luna/An	2016	2015	Variatie
January	14	31	-54.8%
February	-	42	-
March	-	45	-
April	-	96	-
May	-	125	-
June	-	85	-
July	-	38	-
August	-	20	-
September	-	31	-
October	-	25	-
November	-	129	-
December	-	58	-
<b>Total</b>	<b>14</b>	<b>31</b>	<b>-54.8%</b>

Livrarile autohtone (buc)

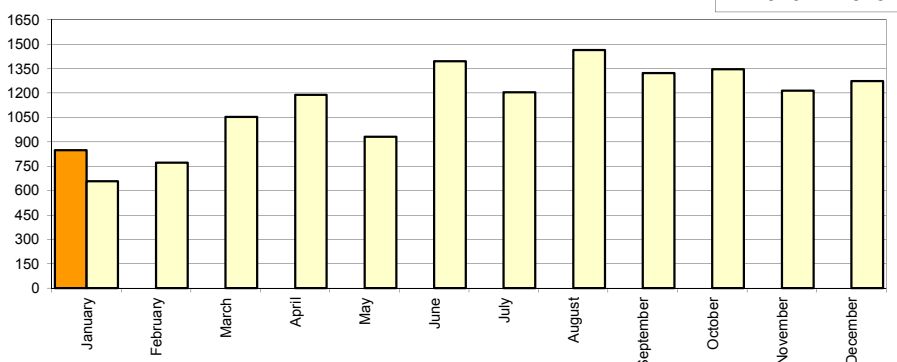


725

## Livrarile comerciale usoare + minibus import / Imported LCV + minibus sales

Luna/An	2016	2015	Variatie
January	848	658	28.9%
February	-	772	-
March	-	1 053	-
April	-	1 189	-
May	-	931	-
June	-	1 394	-
July	-	1 204	-
August	-	1 463	-
September	-	1 322	-
October	-	1 346	-
November	-	1 214	-
December	-	1 274	-
<b>Total</b>	<b>848</b>	<b>658</b>	<b>28.9%</b>

Livrarile import (buc)

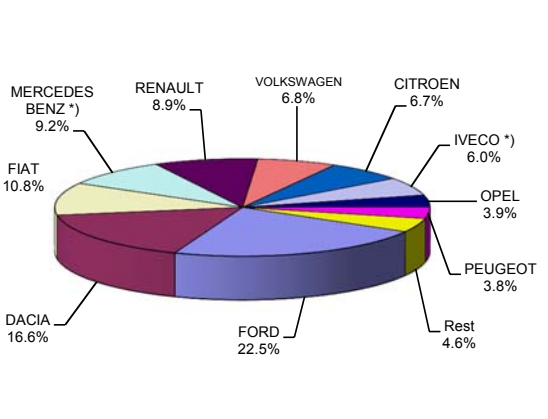


13 820

## Livrarile comerciale &lt;3.5t si minibus - marci / LCV + minibus sales by make

MARCA	Ianuarie		Variatie Decembrie		2016		Variatie 2015	
	pozitie	unitati	pozitie	procent	pozitie	unitati	pozitie	procent
FORD	1	194	2	-6.7%	1	194	2	83.0%
DACIA	2	143	1	-57.3%	2	143	1	-6.5%
FIAT	3	93	5	-29.0%	3	93	4	27.4%
MERCEDES BENZ *)	4	79	3	-44.4%	4	79	3	-11.2%
RENAULT	5	77	4	-43.4%	5	77	6	57.1%
VOLKSWAGEN	6	59	6	-55.0%	6	59	5	-7.8%
CITROEN	7	58	11	152.2%	7	58	10	100.0%
IVECO *)	8	52	7	-28.8%	8	52	11	160.0%
OPEL	9	34	8	-32.0%	9	34	8	13.3%
PEUGEOT	10	33	9	-17.5%	10	33	9	10.0%
Rest		40		-36.5%		40		
<b>TOTAL</b>		<b>862</b>		<b>-35.3%</b>		<b>862</b>		<b>25.1%</b>

Vanzari com &lt;3.5t si minibus - marci - 2016



\*) Estimari APIA / APIA Estimates

## Livrarile comerciale &lt;3.5t si minibus - modele / LCV + minibus sales by model

MODEL	Ianuarie		Variatie Decembrie		2016		Variatie 2015	
	pozitie	unitati	pozitie	procent	pozitie	unitati	pozitie	procent
DACIA DOKKER VAN	1	129	1	-53.4%	1	129	1	5.7%
FORD TRANSIT	2	116	2	-24.7%	2	116	4	169.8%
FIAT DUCATO	3	82	3	-30.5%	3	82	3	70.8%
IVECO *) DAILY	4	51	4	-30.1%	4	51	11	155.0%
CITROEN JUMPER	5	51	18	142.9%	5	51	8	82.1%
FORD TRANSIT CUSTOM	6	34	33	466.7%	6	34	20	209.1%
PEUGEOT BOXER	7	30	11	-14.3%	7	30	9	25.0%
MB *) SPRINTER	8	28	5	-50.0%	8	28	2	-51.7%
MB *) SPRINTER BUS	9	27	9	-35.7%	9	27	22	170.0%
RENAULT MASTER	10	24	7	-51.0%	10	24	6	-17.2%
Rest		290		-42.1%		290		
<b>TOTAL</b>		<b>862</b>		<b>-35.3%</b>		<b>862</b>		<b>25.1%</b>

Vanzari com &lt;3.5t si minibus - modele - 2016

