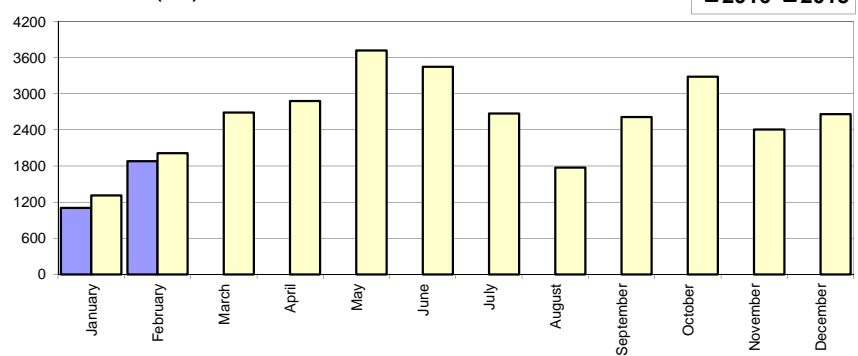


## Livrari autoturisme autohtone / Domestic passenger car sales

Luna/An	2016	2015	Variatie
January	1 103	1 310	-15.8%
February	1 878	2 012	-6.7%
March	-	2 689	-
April	-	2 878	-
May	-	3 716	-
June	-	3 448	-
July	-	2 673	-
August	-	1 772	-
September	-	2 612	-
October	-	3 283	-
November	-	2 404	-
December	-	2 660	-
<b>Total</b>	<b>2 981</b>	<b>3 322</b>	<b>-10.3%</b>

31 457

Livrari autohtone (buc)

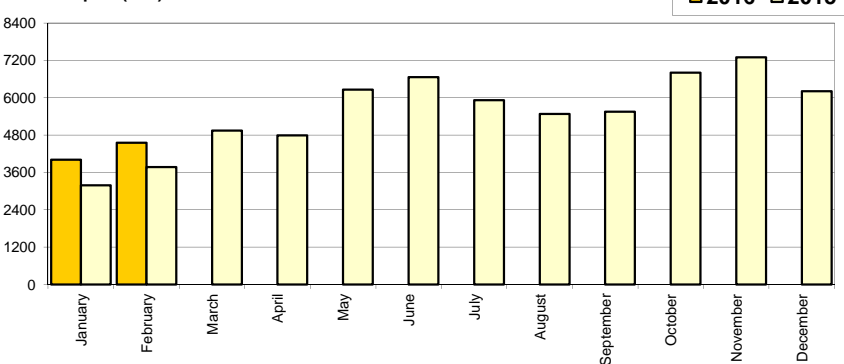


## Livrari autoturisme import / Imported passenger car sales

Luna/An	2016	2015	Variatie
January	4 008	3 185	25.8%
February	4 548	3 775	20.5%
March	-	4 942	-
April	-	4 791	-
May	-	6 257	-
June	-	6 664	-
July	-	5 918	-
August	-	5 478	-
September	-	5 551	-
October	-	6 803	-
November	-	7 296	-
December	-	6 208	-
<b>Total</b>	<b>8 556</b>	<b>6 960</b>	<b>22.9%</b>

66 868

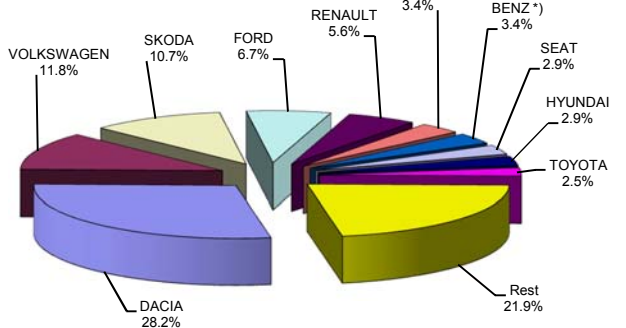
Livrari import (buc)



## Top livrari autoturisme - marci / Passenger car top - by make

MARCA	Februarie		Variatie Ianuarie		2016		Variatie 2015	
	pozitie	unitati	pozitie	procent	pozitie	unitati	pozitie	procent
DACIA	1	1994	1	58.5%	1	<b>3252</b>	1	-5.5%
VOLKSWAGEN	2	740	2	19.2%	2	<b>1361</b>	3	35.0%
SKODA	3	670	3	19.0%	3	<b>1233</b>	2	8.7%
FORD	5	321	4	-29.8%	4	<b>778</b>	4	19.7%
RENAULT	4	372	5	36.8%	5	<b>644</b>	5	7.5%
OPEL	6	239	8	57.2%	6	<b>391</b>	6	-11.1%
MERCEDES BENZ *)	8	200	7	7.0%	7	<b>387</b>	10	54.8%
SEAT	12	150	6	-21.1%	8	<b>340</b>	12	54.6%
HYUNDAI	7	210	11	69.4%	9	<b>334</b>	7	10.2%
TOYOTA	14	147	9	0.7%	10	<b>293</b>	9	8.5%
Rest		1383		21.2%		<b>2524</b>		28.3%
<b>TOTAL</b>		<b>6426</b>		<b>25.7%</b>		<b>11537</b>		<b>12.2%</b>

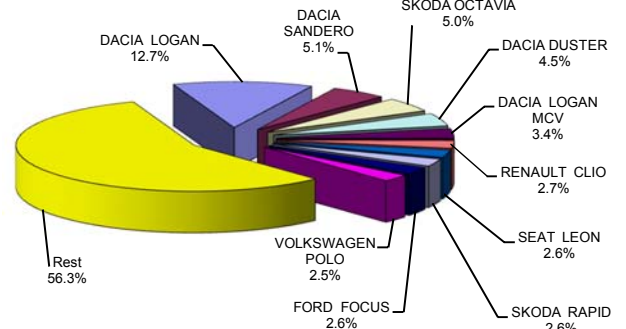
Autoturisme - marci - 2016



## Top livrari autoturisme - modele / Passenger car top - by model

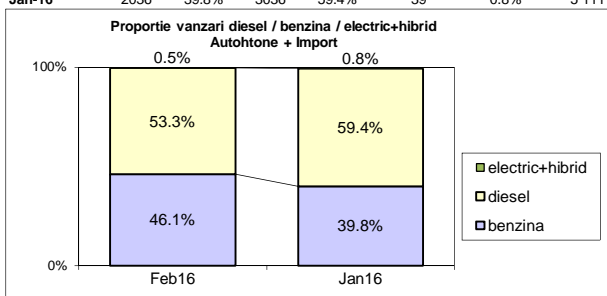
MODEL	Februarie		Variatie Ianuarie		2016		Variatie 2015	
	pozitie	unitati	pozitie	procent	pozitie	unitati	pozitie	procent
DACIA LOGAN	1	868	1	44.4%	1	<b>1469</b>	1	9.7%
DACIA SANDERO	2	401	3	112.2%	2	<b>590</b>	3	-8.8%
SKODA OCTAVIA	4	282	2	-3.1%	3	<b>573</b>	4	8.5%
DACIA DUSTER	3	359	5	128.7%	4	<b>516</b>	2	-43.2%
DACIA LOGAN MCV	5	244	7	62.7%	5	<b>394</b>	5	-2.5%
RENAULT CLIO	6	176	8	33.3%	6	<b>308</b>	8	21.7%
SEAT LEON	11	121	4	-33.2%	7	<b>302</b>	11	55.7%
SKODA RAPID	8	171	10	33.6%	8	<b>299</b>	6	-16.3%
FORD FOCUS	10	141	6	-9.0%	9	<b>296</b>	9	27.0%
VOLKSWAGEN POLO	9	170	11	42.9%	10	<b>289</b>	15	103.5%
Rest		3493		16.1%		<b>6501</b>		23.2%
<b>TOTAL</b>		<b>6426</b>		<b>25.7%</b>		<b>11537</b>		<b>12.2%</b>

Autoturisme - modele - 2016

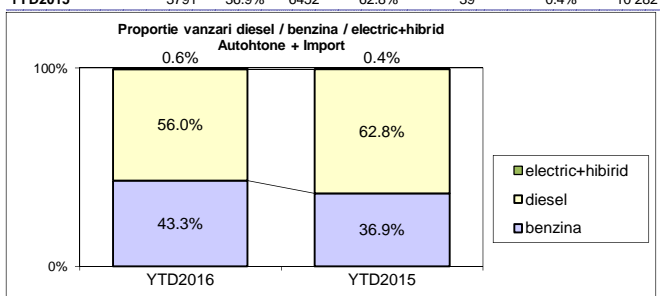


**Segmentare dupa tipul de combustibil / Segmentation by type of fuel**  
**Autohtone + Import / Domestic + Imported**

	benzina		diesel		electric+hibrid		total
<b>Feb-16</b>	2963	46.1%	3428	53.3%	35	0.5%	6 426
<b>Jan-16</b>	2036	39.8%	3036	59.4%	39	0.8%	5 111



	benzina		diesel		electric+hibrid		total
<b>YTD2016</b>	4999	43.3%	6464	56.0%	74	0.6%	11 537
<b>YTD2015</b>	3791	36.9%	6452	62.8%	39	0.4%	10 282


**Livrari autoturisme in functie de tipul de combustibil / Passenger car sales by fuel type**

Luna/An	2016		Pondere		2015		Variatie 16/15	
	diesel	benzina	diesel	benzina	diesel	benzina	diesel	benzina
January	3 036	2 036	59.4%	39.8%	3 022	1 456	0.5%	39.8%
February	3 428	2 963	53.3%	46.1%	3 430	2 335	-0.1%	26.9%
March	-	-	-	-	4 504	3 107	-	-
April	-	-	-	-	4 432	3 204	-	-
May	-	-	-	-	4 671	5 243	-	-
June	-	-	-	-	5 010	5 048	-	-
July	-	-	-	-	4 212	4 338	-	-
August	-	-	-	-	3 925	3 298	-	-
September	-	-	-	-	4 278	3 825	-	-
October	-	-	-	-	4 895	5 112	-	-
November	-	-	-	-	5 072	4 576	-	-
December	-	-	-	-	5 179	3 657	-	-
<b>Total</b>	<b>6 464</b>	<b>4 999</b>	<b>56.0%</b>	<b>43.3%</b>	<b>6 452</b>	<b>3 791</b>	<b>0.2%</b>	<b>31.9%</b>

**Top Electric + Hibrid - marci**

Pozitie	MARCA	2016	2015	Pondere %	Variatie an precedent %
1	TOYOTA	47	22	63.5%	113.6%
2	LEXUS	13	10	17.6%	30.0%
3	LAND ROVER	6	6	8.1%	0.0%
4	BMW	3	0	4.1%	-
5	VOLVO	2	0	2.7%	-
6	RENAULT	1	0	1.4%	-
7	VOLKSWAGEN	1	1	1.4%	0.0%
8	TESLA MOTORS	1	0	1.4%	-
	<b>TOTAL</b>	<b>74</b>	<b>39</b>	<b>100.0%</b>	<b>89.7%</b>

**Top 10 Autoturisme in functie de tipul de alimentare - marci / Top 10 passenger car sales by fuel type and make**
**Top 10 diesel - marci**

MARCA	Februarie 2016	2 luni 2016	Pondere %	Variatie an precedent %	Pondere diesel/total
DACIA	894	1434	22.2%	-27.0%	44.1%
SKODA	417	787	12.2%	-4.0%	63.8%
VOLKSWAGEN	408	767	11.9%	20.8%	56.4%
FORD	221	569	8.8%	24.5%	73.1%
RENAULT	221	412	6.4%	-15.4%	64.0%
MERCEDES BENZ *)	176	339	5.2%	47.4%	87.6%
BMW	162	262	4.1%	43.2%	91.3%
SEAT	82	241	3.7%	59.6%	70.9%
AUDI	96	207	3.2%	43.8%	76.7%
LAND ROVER	80	180	2.8%	53.8%	87.8%
Rest	671	1266	19.6%	0.2%	45.5%
<b>TOTAL</b>	<b>3428</b>	<b>6464</b>	<b>100%</b>	<b>0.2%</b>	<b>56.0%</b>

\*) Estimari APIA / APIA Estimates

**Top 10 benzina - marci**

MARCA	Februarie 2016	2 luni 2016	Pondere %	Variatie an precedent %	Pondere benzina/total
DACIA	1100	1818	36.4%	23.1%	55.9%
VOLKSWAGEN	331	593	11.9%	59.4%	43.6%
SKODA	253	446	8.9%	42.0%	36.2%
OPEL	144	233	4.7%	25.9%	59.6%
RENAULT	151	231	4.6%	106.3%	35.9%
FORD	100	209	4.2%	8.3%	26.9%
TOYOTA	92	173	3.5%	17.7%	59.0%
SUZUKI	83	166	3.3%	112.8%	86.0%
FIAT	91	161	3.2%	-5.8%	56.3%
HYUNDAI	108	159	3.2%	-21.3%	47.6%
Rest	510	810	16.2%	50.0%	29.2%
<b>TOTAL</b>	<b>2963</b>	<b>4999</b>	<b>100%</b>	<b>31.9%</b>	<b>43.3%</b>

\*) Estimari APIA / APIA Estimates

**Top 10 Autoturisme in functie de tipul de alimentare - modele / Top 10 passenger car sales by fuel type and model**
**Top 10 diesel - model**

MODEL	Februarie 2016	2 luni 2016	Pondere %	Variatie an precedent %	Pondere diesel/total
SKODA OCTAVIA	246	483	7.5%	5.0%	84.3%
DACIA LOGAN	258	426	6.6%	-21.5%	29.0%
DACIA DUSTER	290	398	6.2%	-51.2%	77.1%
DACIA LOGAN MCV	171	261	4.0%	-5.1%	66.2%
SEAT LEON	66	219	3.4%	54.2%	72.5%
FORD FOCUS	85	209	3.2%	41.2%	70.6%
VOLKSWAGEN PASSAT	101	196	3.0%	32.4%	93.3%
RENAULT CLIO	95	170	2.6%	-9.1%	55.2%
VOLKSWAGEN GOLF	108	155	2.4%	-27.9%	61.0%
DACIA DOKKER	59	152	2.4%	65.2%	74.5%
Rest	1949	3795	58.7%	10.8%	54.1%
<b>TOTAL</b>	<b>3428</b>	<b>6464</b>	<b>100%</b>	<b>0.2%</b>	<b>56.0%</b>

\*) Estimari APIA / APIA Estimates

**Top 10 benzina - model**

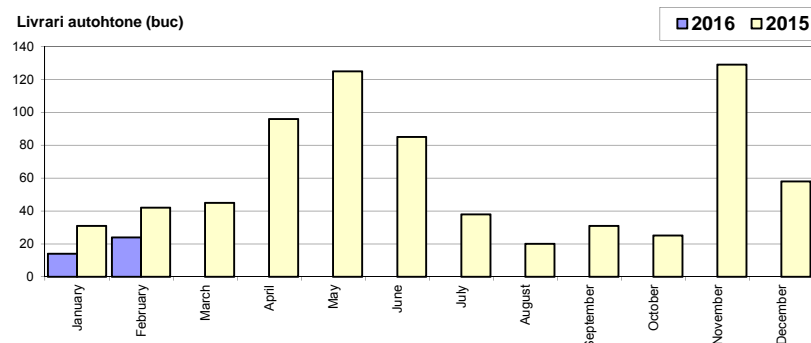
MODEL	Februarie 2016	2 luni 2016	Pondere %	Variatie an precedent %	Pondere benzina/total
DACIA LOGAN	610	1043	20.9%	31.0%	71.0%
DACIA SANDERO	310	452	9.0%	3.9%	76.6%
VOLKSWAGEN POLO	163	276	5.5%	150.9%	95.5%
SKODA RAPID	95	162	3.2%	4.5%	54.2%
SKODA FABIA	94	149	3.0%	119.1%	80.5%
RENAULT CLIO	81	138	2.8%	109.1%	44.8%
OPEL CORSA	77	137	2.7%	63.1%	99.3%
DACIA LOGAN MCV	73	133	2.7%	3.1%	33.8%
DACIA DUSTER	69	118	2.4%	28.3%	22.9%
SUZUKI VITARA	53	105	2.1%	0.0%	80.8%
Rest	1338	2286	45.7%	23.2%	31.7%
<b>TOTAL</b>	<b>2963</b>	<b>4999</b>	<b>100%</b>	<b>31.9%</b>	<b>43.3%</b>

\*) Estimari APIA / APIA Estimates

## Livrari comerciale usoare + minibus autohtone / Domestic LCV + minibus sales

Luna/An	2016	2015	Variatie
January	14	31	-54.8%
February	24	42	-42.9%
March	-	45	-
April	-	96	-
May	-	125	-
June	-	85	-
July	-	38	-
August	-	20	-
September	-	31	-
October	-	25	-
November	-	129	-
December	-	58	-
<b>Total</b>	<b>38</b>	<b>73</b>	<b>-47.9%</b>

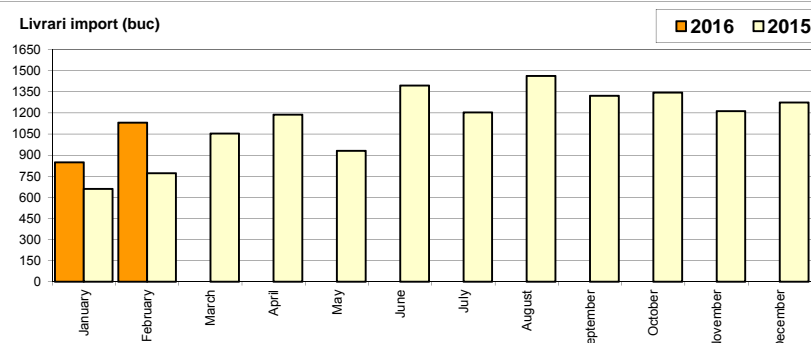
725



## Livrari comerciale usoare + minibus import / Imported LCV + minibus sales

Luna/An	2016	2015	Variatie
January	848	660	28.5%
February	1 131	772	46.5%
March	-	1 053	-
April	-	1 189	-
May	-	931	-
June	-	1 394	-
July	-	1 204	-
August	-	1 463	-
September	-	1 322	-
October	-	1 346	-
November	-	1 214	-
December	-	1 274	-
<b>Total</b>	<b>1 979</b>	<b>1 432</b>	<b>38.2%</b>

13 822

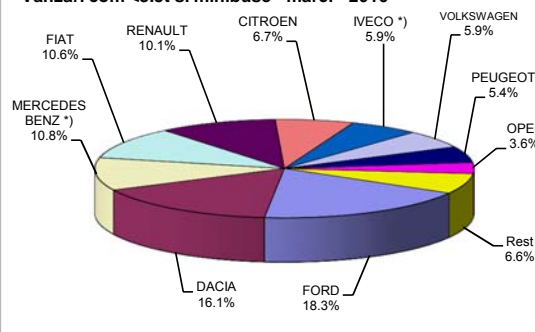


## Livrari comerciale &lt;3.5t si minibus - marci / LCV + minibus sales by make

MARCA	Februarie		Variatie Ianuarie		2016		Variatie 2015	
	pozitie	unitati	pozitie	procent	pozitie	unitati	pozitie	procent
FORD	2	176	1	-9.3%	1	370	2	39.6%
DACIA	1	182	2	27.3%	2	325	1	-6.1%
MERCEDES BENZ *)	3	138	4	74.7%	3	217	3	-0.9%
FIAT	5	120	3	29.0%	4	213	4	46.9%
RENAULT	4	127	5	64.9%	5	204	6	100.0%
CITROEN	6	77	7	32.8%	6	135	8	107.7%
IVECO *)	8	68	8	30.8%	7	120	9	130.8%
VOLKSWAGEN	9	59	6	0.0%	8	118	5	0.9%
PEUGEOT	7	75	10	127.3%	9	108	7	35.0%
OPEL	11	39	9	14.7%	10	73	10	62.2%
Rest		94		135.0%		134		94.2%
<b>TOTAL</b>		<b>1155</b>		<b>34.0%</b>		<b>2017</b>		<b>34.0%</b>

\*) Estimari APIA / APIA Estimates

## Vanzari com &lt;3.5t si minibus - marci - 2016



## Livrari comerciale &lt;3.5t si minibus - modele / LCV + minibus sales by model

MODEL	Februarie		Variatie Ianuarie		2016		Variatie 2015	
	pozitie	unitati	pozitie	procent	pozitie	unitati	pozitie	procent
DACIA DOKKER VAN	1	158	1	22.5%	1	287	1	5.1%
FORD TRANSIT	4	74	2	-36.2%	2	190	4	113.5%
FIAT DUCATO	2	91	3	11.0%	3	173	3	80.2%
CITROEN JUMPER	3	74	5	45.1%	4	125	8	131.5%
IVECO *) DAILY	7	62	4	21.6%	5	113	9	117.3%
PEUGEOT BOXER	6	67	7	123.3%	6	97	7	76.4%
RENAULT MASTER	5	72	10	200.0%	7	96	5	39.1%
MERCEDES BENZ *) SPRINTER	8	57	8	103.8%	8	85	2	-28.0%
MERCEDES BENZ *) SPRINTER BUS	9	53	9	96.3%	9	80	10	60.0%
FORD TRANSIT CUSTOM	11	43	6	26.5%	10	77	11	63.8%
Rest		404		39.3%		694		15.3%
<b>TOTAL</b>		<b>1155</b>		<b>34.0%</b>		<b>2017</b>		<b>34.0%</b>

\*) Estimari APIA / APIA Estimates

## Vanzari com &lt;3.5t si minibus - modele - 2016

