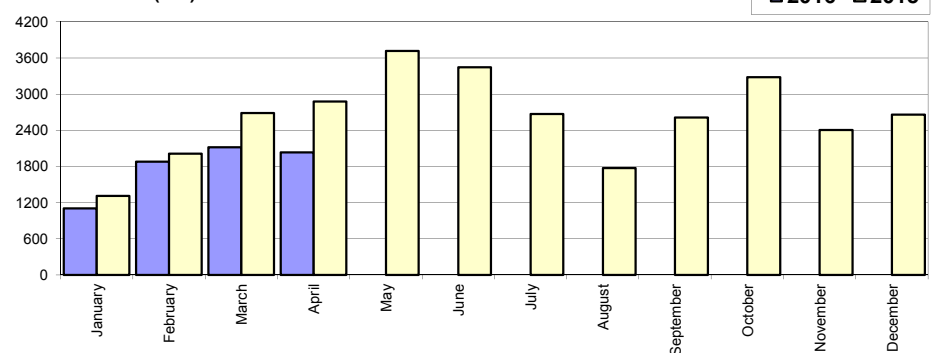


## Livrari autoturisme autohtone / Domestic passenger car sales

Luna/An	2016	2015	Variatie
January	1 103	1 310	-15.8%
February	1 878	2 012	-6.7%
March	2 116	2 689	-21.3%
April	2 035	2 878	-29.3%
May	-	3 716	-
June	-	3 448	-
July	-	2 673	-
August	-	1 772	-
September	-	2 612	-
October	-	3 283	-
November	-	2 404	-
December	-	2 660	-
<b>Total</b>	<b>7 132</b>	<b>8 889</b>	<b>-19.8%</b>

31 457

Livrari autohtone (buc)

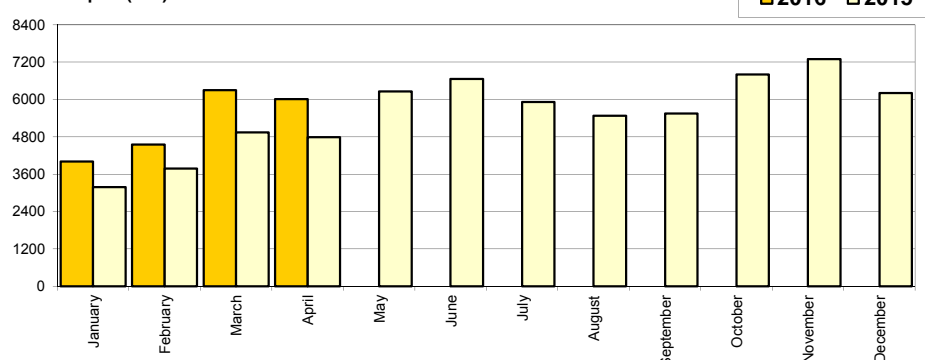


## Livrari autoturisme import / Imported passenger car sales

Luna/An	2016	2015	Variatie
January	4 008	3 185	25.8%
February	4 549	3 775	20.5%
March	6 297	4 942	27.4%
April	6 007	4 791	25.4%
May	-	6 257	-
June	-	6 664	-
July	-	5 918	-
August	-	5 478	-
September	-	5 551	-
October	-	6 803	-
November	-	7 296	-
December	-	6 208	-
<b>Total</b>	<b>20 861</b>	<b>16 693</b>	<b>25.0%</b>

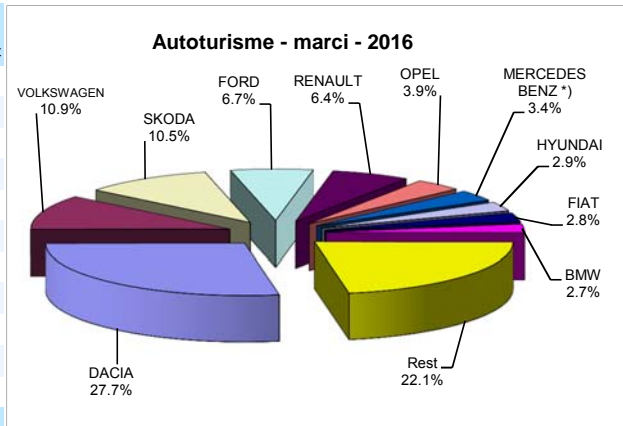
66 868

Livrari import (buc)



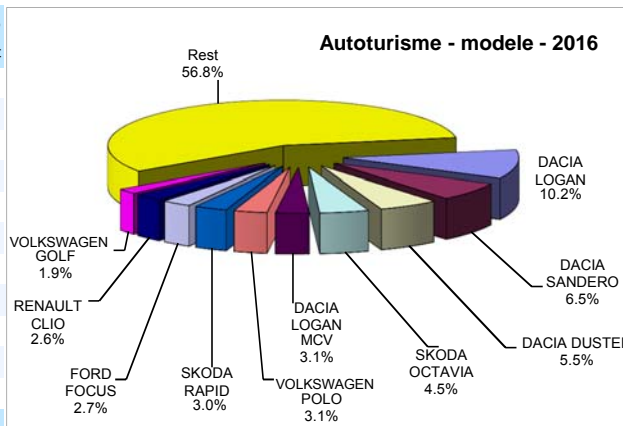
## Top livrari autoturisme - marti / Passenger car top - by make

MARCA	Aprilie		Variatie Martie		2016		Variatie2015	
	pozitie	unitati	pozitie	procent	pozitie	unitati	pozitie	procent
DACIA	1	2238	1	-1.1%	1	<b>7752</b>	1	-17.0%
VOLKSWAGEN	3	815	2	-7.7%	2	<b>3059</b>	3	32.3%
SKODA	2	844	3	-2.3%	3	<b>2941</b>	2	16.6%
FORD	5	546	5	-0.6%	4	<b>1873</b>	4	0.3%
RENAULT	4	560	4	-4.0%	5	<b>1787</b>	5	17.6%
OPEL	6	392	6	29.0%	6	<b>1087</b>	6	28.3%
MERCEDES BENZ *)	7	273	9	-5.2%	7	<b>948</b>	9	49.1%
HYUNDAI	8	229	11	-6.9%	8	<b>809</b>	8	25.2%
FIAT	10	212	8	-27.9%	9	<b>792</b>	7	15.3%
BMW	14	180	7	-39.4%	10	<b>764</b>	12	55.0%
Rest		1753		-4.9%		<b>6181</b>		31.2%
<b>TOTAL</b>		<b>8042</b>		<b>-4.4%</b>		<b>27993</b>		<b>9.4%</b>



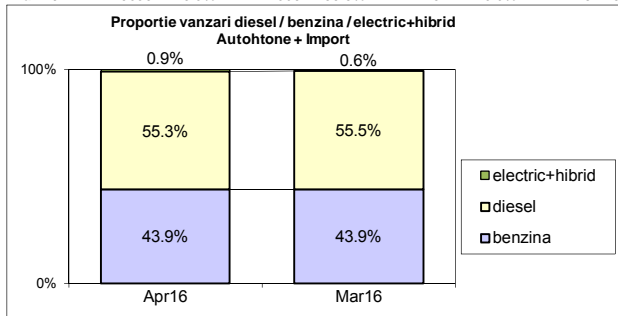
## Top livrari autoturisme - modele / Passenger car top - by model

MODEL	Aprilie		Variatie Martie		2016		Variatie2015	
	pozitie	unitati	pozitie	procent	pozitie	unitati	pozitie	procent
DACIA LOGAN	2	592	1	-26.7%	1	<b>2869</b>	1	-32.1%
DACIA SANDERO	1	709	3	34.5%	2	<b>1826</b>	3	15.9%
DACIA DUSTER	3	479	2	-11.8%	3	<b>1538</b>	2	-31.0%
SKODA OCTAVIA	4	317	4	-15.2%	4	<b>1264</b>	4	13.7%
DACIA LOGAN MCV	7	249	7	13.7%	5	<b>862</b>	6	5.0%
VOLKSWAGEN POLO	8	238	5	-28.1%	6	<b>858</b>	14	137.7%
SKODA RAPID	5	299	6	22.0%	7	<b>843</b>	5	-4.4%
FORD FOCUS	6	260	9	34.7%	8	<b>749</b>	9	13.3%
RENAULT CLIO	9	216	8	0.9%	9	<b>738</b>	10	21.8%
VOLKSWAGEN GOLF	11	157	14	20.8%	10	<b>541</b>	8	-20.9%
Rest		4526		-6.3%		<b>15905</b>		28.0%
<b>TOTAL</b>		<b>8042</b>		<b>-4.4%</b>		<b>27993</b>		<b>9.4%</b>

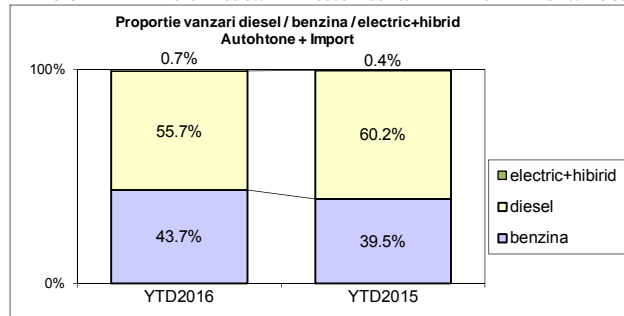


**Segmentare dupa tipul de combustibil / Segmentation by type of fuel**  
**Autohtone + Import / Domestic + Imported**

	benzina		diesel		electric+hibrid		total
Apr-16	3527	43.9%	4446	55.3%	69	0.9%	8 042
Mar-16	3693	43.9%	4668	55.5%	52	0.6%	8 413



	benzina		diesel		electric+hibrid		total
YTD2016	12219	43.7%	15579	55.7%	195	0.7%	27 993
YTD2015	10102	39.5%	15388	60.2%	92	0.4%	25 582


**Livrari autoturisme in functie de tipul de combustibil**  
**Passenger car sales by fuel type**

Luna/An	2016		Pondere		2015		Variatie 16/15	
	diesel	benzina	diesel	benzina	diesel	benzina	diesel	benzina
January	3 036	2 036	59.4%	39.8%	3 022	1 456	0.5%	39.8%
February	3 429	2 963	53.4%	46.1%	3 430	2 335	0.0%	26.9%
March	4 668	3 693	55.5%	43.9%	4 504	3 107	3.6%	18.9%
April	4 446	3 527	55.3%	43.9%	4 432	3 204	0.3%	10.1%
May	-	-	-	-	4 671	5 243	-	-
June	-	-	-	-	5 010	5 048	-	-
July	-	-	-	-	4 212	4 338	-	-
August	-	-	-	-	3 925	3 298	-	-
September	-	-	-	-	4 278	3 825	-	-
October	-	-	-	-	4 895	5 112	-	-
November	-	-	-	-	5 072	4 576	-	-
December	-	-	-	-	5 179	3 657	-	-
<b>Total</b>	<b>15 579</b>	<b>12 219</b>	<b>55.7%</b>	<b>43.7%</b>	<b>15 388</b>	<b>10 102</b>	<b>1.2%</b>	<b>21.0%</b>

**Top Electric + Hibrid - marci**

Pozitie	MARCA	4 luni 2016	4 luni 2015	Pondere %	Variatie an precedent %
1	TOYOTA	119	47	61.0%	153.2%
2	LEXUS	48	16	24.6%	200.0%
3	BMW	8	0	4.1%	-
4	LAND ROVER	7	9	3.6%	-22.2%
5	VOLKSWAGEN	4	1	2.1%	300.0%
6	VOLVO	3	0	1.5%	-
7	MITSUBISHI	2	1	1.0%	100.0%
8	FORD	1	0	0.5%	-
9	MERCEDES BENZ *)	1	7	0.5%	-85.7%
10	ALTE MARCI *)	1	4	0.5%	-75.0%
	Rest	1	7	0.5%	-85.7%
	<b>TOTAL</b>	<b>195</b>	<b>92</b>	<b>100%</b>	<b>112.0%</b>

\*) Estimari APIA / APIA Estimates

**Top 10 Autoturisme in functie de tipul de alimentare - marci / Top 10 passenger car sales by fuel type and make**
**Top 10 diesel - marci**

MARCA	Aprilie 2016	4 luni 2016	Pondere %	Variatie an precedent %	Pondere diesel/total
DACIA	1218	3814	24.5%	-15.5%	49.2%
SKODA	480	1837	11.8%	0.5%	62.5%
VOLKSWAGEN	416	1609	10.3%	6.5%	52.6%
RENAULT	383	1174	7.5%	4.8%	65.7%
FORD	270	1153	7.4%	-20.1%	61.6%
MERCEDES BENZ *)	214	783	5.0%	45.5%	82.6%
BMW	168	713	4.6%	56.0%	93.3%
AUDI	130	453	2.9%	15.3%	68.4%
OPEL	185	434	2.8%	-5.9%	39.9%
NISSAN	117	413	2.7%	2.5%	68.2%
Rest	865	3196	20.5%	17.5%	49.1%
<b>TOTAL</b>	<b>4446</b>	<b>15579</b>	<b>100%</b>	<b>1.2%</b>	<b>55.7%</b>

\*) Estimari APIA / APIA Estimates

**Top 10 benzina - marci**

MARCA	Aprilie 2016	4 luni 2016	Pondere %	Variatie an precedent %	Pondere benzina/total
DACIA	1020	3938	32.2%	-18.4%	50.8%
VOLKSWAGEN	397	1446	11.8%	80.8%	47.3%
SKODA	364	1104	9.0%	58.8%	37.5%
FORD	276	719	5.9%	69.6%	38.4%
OPEL	207	653	5.3%	69.6%	60.1%
RENAULT	177	612	5.0%	53.4%	34.2%
FIAT	134	509	4.2%	27.3%	64.3%
HYUNDAI	131	400	3.3%	-1.5%	49.4%
TOYOTA	94	397	3.2%	2.6%	52.9%
SUZUKI	96	357	2.9%	168.4%	86.9%
Rest	631	2084	17.1%	67.3%	31.0%
<b>TOTAL</b>	<b>3527</b>	<b>12219</b>	<b>100%</b>	<b>21.0%</b>	<b>43.7%</b>

\*) Estimari APIA / APIA Estimates

**Top 10 Autoturisme in functie de tipul de alimentare - modele / Top 10 passenger car sales by fuel type and model**
**Top 10 diesel - model**

MODEL	Aprilie 2016	4 luni 2016	Pondere %	Variatie an precedent %	Pondere diesel/total
DACIA DUSTER	411	1217	7.8%	-37.1%	79.1%
SKODA OCTAVIA	258	1047	6.7%	12.5%	82.8%
DACIA LOGAN	254	996	6.4%	-10.1%	34.7%
DACIA SANDERO	256	602	3.9%	16.7%	33.0%
DACIA LOGAN MCV	140	525	3.4%	-3.1%	60.9%
VOLKSWAGEN PASSAT	93	430	2.8%	9.1%	92.5%
FORD FOCUS	102	410	2.6%	-12.2%	54.7%
SKODA RAPID	99	398	2.6%	-29.8%	47.2%
RENAULT CLIO	87	396	2.5%	-4.6%	53.7%
VOLKSWAGEN GOLF	113	358	2.3%	-27.1%	66.2%
Rest	2633	9200	59.1%	14.7%	56.4%
<b>TOTAL</b>	<b>4446</b>	<b>15579</b>	<b>100%</b>	<b>1.2%</b>	<b>55.7%</b>

\*) Estimari APIA / APIA Estimates

**Top 10 benzina - model**

MODEL	Aprilie 2016	4 luni 2016	Pondere %	Variatie an precedent %	Pondere benzina/total
DACIA LOGAN	338	1873	15.3%	-39.9%	65.3%
DACIA SANDERO	453	1224	10.0%	15.6%	67.0%
VOLKSWAGEN POLO	235	836	6.8%	186.3%	97.4%
SKODA RAPID	200	445	3.6%	41.3%	52.8%
RENAULT CLIO	129	342	2.8%	79.1%	46.3%
SKODA FABIA	88	342	2.8%	140.8%	85.7%
FORD FOCUS	158	339	2.8%	74.7%	45.3%
DACIA LOGAN MCV	109	337	2.8%	20.8%	39.1%
DACIA DUSTER	68	321	2.6%	9.6%	20.9%
OPEL CORSA	5	244	2.0%	51.6%	79.2%
Rest	1744	5916	48.4%	45.7%	34.8%
<b>TOTAL</b>	<b>3527</b>	<b>12219</b>	<b>100%</b>	<b>21.0%</b>	<b>43.7%</b>

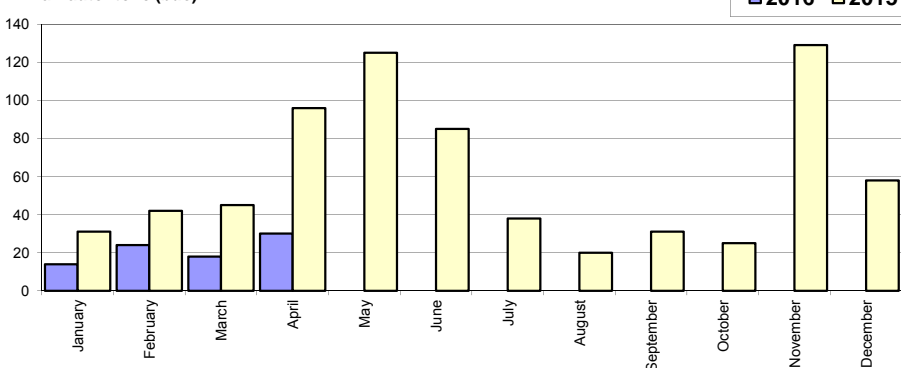
\*) Estimari APIA / APIA Estimates

## Livrari comerciale usoare + minibus autohtone / Domestic LCV + minibus sales

Luna/An	2016	2015	Variatie
January	14	31	-54.8%
February	24	42	-42.9%
March	18	45	-60.0%
April	30	96	-68.8%
May	-	125	-
June	-	85	-
July	-	38	-
August	-	20	-
September	-	31	-
October	-	25	-
November	-	129	-
December	-	58	-
<b>Total</b>	<b>86</b>	<b>214</b>	<b>-59.8%</b>

725

Livrari autohtone (buc)

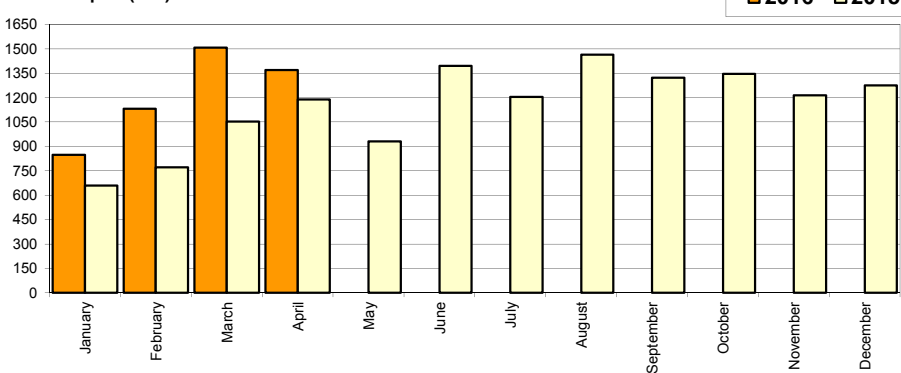


## Livrari comerciale usoare + minibus import / Imported LCV + minibus sales

Luna/An	2016	2015	Variatie
January	848	660	28.5%
February	1 131	772	46.5%
March	1 508	1 053	43.2%
April	1 370	1 189	15.2%
May	-	931	-
June	-	1 394	-
July	-	1 204	-
August	-	1 463	-
September	-	1 322	-
October	-	1 346	-
November	-	1 214	-
December	-	1 274	-
<b>Total</b>	<b>4 857</b>	<b>3 674</b>	<b>32.2%</b>

13 822

Livrari import (buc)

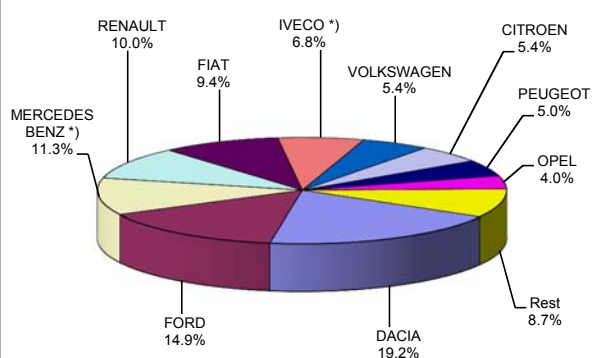


## Livrari comerciale &lt;3.5t si minibus - marci / LCV + minibus sales by make

MARCA	Aprilie		Variatie Martie		2016		Variatie2015	
	pozitie	unitati	pozitie	procent	pozitie	unitati	pozitie	procent
DACIA	1	259	1	-29.0%	1	949	1	20.1%
FORD	2	196	3	15.3%	2	736	2	13.8%
MERCEDES BENZ *)	4	165	2	-6.3%	3	558	3	17.2%
RENAULT	3	169	5	40.8%	4	493	6	81.9%
FIAT	6	111	4	-20.7%	5	464	5	33.7%
IVECO *)	5	113	6	9.7%	6	336	11	164.6%
VOLKSWAGEN	8	65	7	-22.6%	7	267	7	6.0%
CITROEN	9	63	11	-6.0%	8	265	9	66.7%
PEUGEOT	10	57	8	-30.5%	9	247	8	14.4%
OPEL	12	49	10	-33.8%	10	196	4	-48.3%
Rest		153		5.5%		432		92.9%
<b>TOTAL</b>		<b>1400</b>		<b>-8.3%</b>		<b>4943</b>		<b>27.1%</b>

\*) Estimari APIA / APIA Estimates

Vanzari com &lt;3.5t si minibus - marci - 2016



## Livrari comerciale &lt;3.5t si minibus - modele / LCV + minibus sales by model

MODEL	Aprilie		Variatie Martie		2016		Variatie2015	
	pozitie	unitati	pozitie	procent	pozitie	unitati	pozitie	procent
DACIA DOKKER VAN	1	229	1	-34.0%	1	863	1	49.8%
FORD TRANSIT	2	123	4	26.8%	2	410	2	18.2%
FIAT DUCATO	5	89	2	-23.3%	3	378	4	41.6%
IVECO *) DAILY	3	113	3	10.8%	4	328	9	158.3%
RENAULT MASTER	4	109	8	81.7%	5	265	7	53.2%
MERCEDES BENZ *) SPRINTER	7	72	5	-17.2%	6	244	5	-8.3%
CITROEN JUMPER	9	55	10	5.8%	7	232	10	84.1%
PEUGEOT BOXER	11	45	7	-34.8%	8	211	8	37.0%
MERCEDES BENZ *) SPRINTER BUS	8	56	9	7.7%	9	188	12	121.2%
TOYOTA HI-LUX	10	47	13	38.2%	10	149	11	18.3%
Rest		462		-9.4%		1675		2.1%
<b>TOTAL</b>		<b>1400</b>		<b>-8.3%</b>		<b>4943</b>		<b>27.1%</b>

\*) Estimari APIA / APIA Estimates

Vanzari com &lt;3.5t si minibus - modele - 2016

