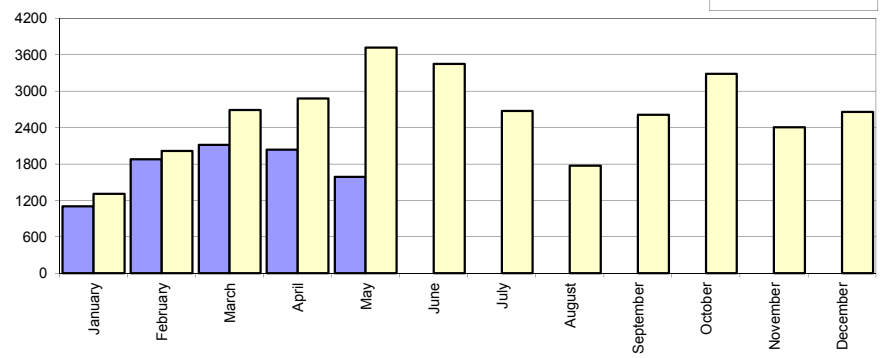


Livrari autoturisme autohtone / Domestic passenger car sales

Luna/An	2016	2015	Variatie
January	1 103	1 310	-15.8%
February	1 878	2 012	-6.7%
March	2 116	2 689	-21.3%
April	2 035	2 878	-29.3%
May	1 586	3 716	-57.3%
June	-	3 448	-
July	-	2 673	-
August	-	1 772	-
September	-	2 612	-
October	-	3 283	-
November	-	2 404	-
December	-	2 660	-
Total	8 718	12 605	-30.8%

31 457

Livrari autohtone (buc)

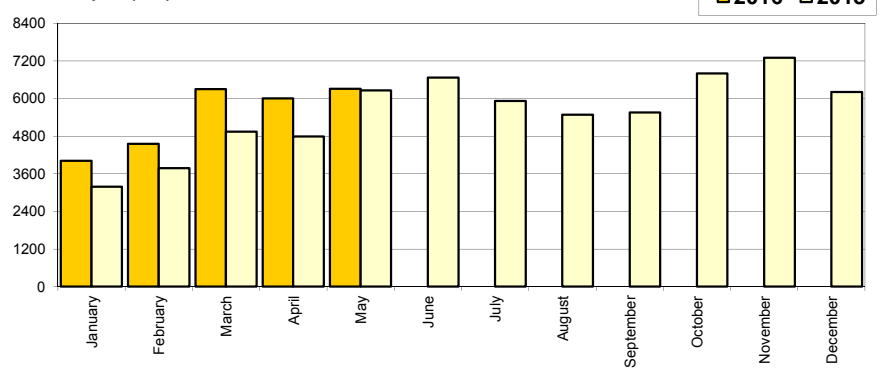


Livrari autoturisme import / Imported passenger car sales

Luna/An	2016	2015	Variatie
January	4 008	3 185	25.8%
February	4 549	3 775	20.5%
March	6 297	4 942	27.4%
April	6 007	4 791	25.4%
May	6 310	6 257	0.8%
June	-	6 664	-
July	-	5 918	-
August	-	5 478	-
September	-	5 551	-
October	-	6 803	-
November	-	7 296	-
December	-	6 208	-
Total	27 171	22 950	18.4%

66 868

Livrari import (buc)

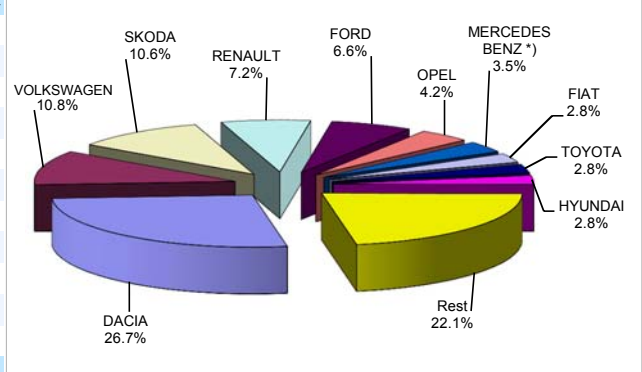


Top livrari autoturisme - marci / Passenger car top - by make

MARCA	Mai		Variatie Aprilie		2016		Variatie2015	
	pozitie	unitati	pozitie	procent	pozitie	unitati	pozitie	procent
DACIA	1	1841	1	-17.7%	1	9593	1	-27.8%
VOLKSWAGEN	3	804	3	-1.4%	2	3863	2	14.4%
SKODA	2	847	2	0.4%	3	3788	3	15.8%
RENAULT	4	794	4	41.8%	4	2581	5	17.3%
FORD	5	495	5	-9.3%	5	2368	4	4.6%
OPEL	6	435	6	11.0%	6	1522	6	31.4%
MERCEDES BENZ *)	7	292	7	7.0%	7	1240	10	43.2%
FIAT	10	230	10	8.5%	8	1022	9	11.2%
TOYOTA	8	255	13	40.9%	9	1005	8	9.1%
HYUNDAI	14	184	8	-19.7%	10	993	7	-1.0%
Rest		1719		-1.9%		7914		25.9%
TOTAL		7896		-1.8%		35889		0.9%

*) Estimari APIA / APIA Estimates

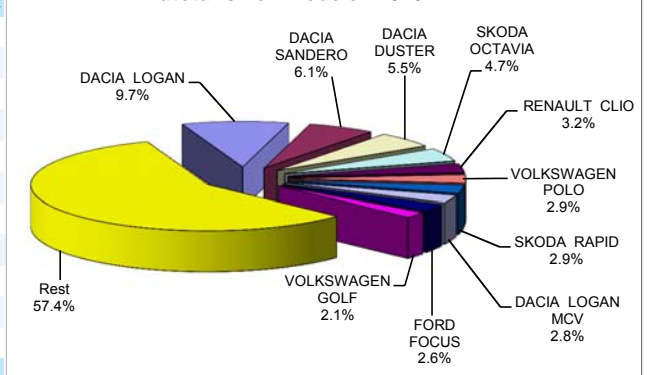
Autoturisme - marci - 2016



Top livrari autoturisme - modele / Passenger car top - by model

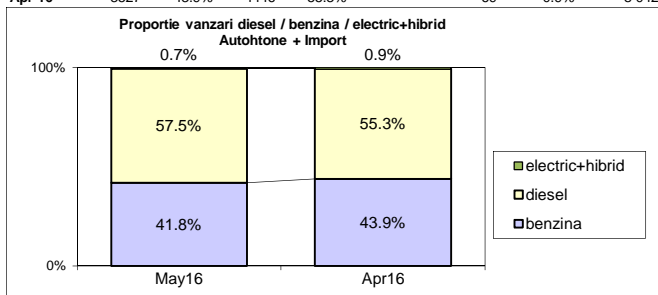
MODEL	Mai		Variatie Aprilie		2016		Variatie2015	
	pozitie	unitati	pozitie	procent	pozitie	unitati	pozitie	procent
DACIA LOGAN	1	628	2	6.1%	1	3497	1	-44.4%
DACIA SANDERO	5	380	1	-46.4%	2	2206	3	-7.6%
DACIA DUSTER	2	438	3	-8.6%	3	1976	2	-27.5%
SKODA OCTAVIA	3	414	4	30.6%	4	1678	4	12.7%
RENAULT CLIO	4	405	9	87.5%	5	1143	10	37.4%
VOLKSWAGEN POLO	7	194	8	-18.5%	6	1052	13	89.2%
SKODA RAPID	9	190	5	-36.5%	7	1033	6	-4.9%
DACIA LOGAN MCV	15	138	7	-44.6%	8	1000	5	-13.7%
FORD FOCUS	8	190	6	-26.9%	9	939	11	17.7%
VOLKSWAGEN GOLF	6	217	11	38.2%	10	758	7	-25.8%
Rest		4702		3.9%		20607		19.7%
TOTAL		7896		-1.8%		35889		0.9%

Autoturisme - modele - 2016

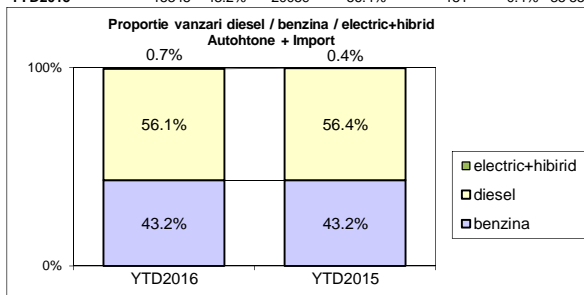


Segmentare dupa tipul de combustibil / Segmentation by type of fuel
Autohtone + Import / Domestic + Imported

	benzina	diesel	electric+hibrid	total
May-16	3301 41.8%	4543 57.5%	52 0.7%	7 896
Apr-16	3527 43.9%	4446 55.3%	69 0.9%	8 042



	benzina	diesel	electric+hibrid	total
YTD2016	15520 43.2%	20122 56.1%	247 0.7%	35 889
YTD2015	15345 43.2%	20059 56.4%	151 0.4%	35 555


Livrari autoturisme in functie de tipul de combustibil / Passenger car sales by fuel type

Luna/An	2016		Pondere		2015		Variatie 16/15	
	diesel	benzina	diesel	benzina	diesel	benzina	diesel	benzina
January	3 036	2 036	59.4%	39.8%	3 022	1 456	0.5%	39.8%
February	3 429	2 963	53.4%	46.1%	3 430	2 335	0.0%	26.9%
March	4 668	3 693	55.5%	43.9%	4 504	3 107	3.6%	18.9%
April	4 446	3 527	55.3%	43.9%	4 432	3 204	0.3%	10.1%
May	4 543	3 301	57.5%	41.8%	4 671	5 243	-2.7%	-37.0%
June	-	-	-	-	5 010	5 048	-	-
July	-	-	-	-	4 212	4 338	-	-
August	-	-	-	-	3 925	3 298	-	-
September	-	-	-	-	4 278	3 825	-	-
October	-	-	-	-	4 895	5 112	-	-
November	-	-	-	-	5 072	4 576	-	-
December	-	-	-	-	5 179	3 657	-	-
Total	20 122	15 520	56.1%	43.2%	20 059	15 345	0.3%	1.1%

Top Electric + Hibrid - marci

Pozitie	MARCA	5 luni 2016	5 luni 2015	Pondere %	Variatie an precedent %
1	TOYOTA	148	87	59.9%	70.1%
2	LEXUS	66	21	26.7%	214.3%
3	BMW	11	0	4.5%	-
4	LAND ROVER	7	12	2.8%	-41.7%
5	VOLVO	5	0	2.0%	-
6	VOLKSWAGEN	4	2	1.6%	100.0%
7	MITSUBISHI	2	2	0.8%	0.0%
8	FORD	1	0	0.4%	-
9	MERCEDES BEN	1	7	0.4%	-85.7%
10	RENAULT	1	5	0.4%	-80.0%
	Rest	1	15	0.4%	-93.3%
	TOTAL	247	151	100%	63.6%

*) Estimari APIA / APIA Estimates

Top 10 Autoturisme in functie de tipul de alimentare - marci / Top 10 passenger car sales by fuel type and make
Top 10 diesel - marci

MARCA	Mai 2016	5 luni 2016	Pondere %	Variatie an precedent %	Pondere diesel/total
DACIA	1117	4931	24.5%	-17.9%	51.4%
SKODA	583	2420	12.0%	5.7%	63.9%
VOLKSWAGEN	440	2049	10.2%	-0.3%	53.0%
RENAULT	515	1689	8.4%	9.5%	65.4%
FORD	275	1428	7.1%	-12.6%	60.3%
MERCEDES BENZ *)	249	1032	5.1%	40.6%	83.2%
BMW	152	865	4.3%	45.6%	91.6%
AUDI	164	617	3.1%	13.0%	69.2%
OPEL	142	576	2.9%	4.9%	37.8%
NISSAN	157	570	2.8%	1.4%	71.9%
Rest	749	3945	19.6%	11.1%	47.5%
TOTAL	4543	20122	100%	0.3%	56.1%

*) Estimari APIA / APIA Estimates

Top 10 benzina - marci

MARCA	Mai 2016	5 luni 2016	Pondere %	Variatie an precedent %	Pondere benzina/total
DACIA	724	4662	30.0%	-36.0%	48.6%
VOLKSWAGEN	364	1810	11.7%	37.2%	46.9%
SKODA	264	1368	8.8%	39.2%	36.1%
OPEL	293	946	6.1%	55.6%	62.2%
FORD	220	939	6.1%	49.0%	39.7%
RENAULT	279	891	5.7%	36.4%	34.5%
FIAT	128	637	4.1%	26.6%	62.3%
TOYOTA	174	571	3.7%	-1.0%	56.8%
HYUNDAI	110	510	3.3%	-24.0%	51.4%
SUZUKI	103	460	3.0%	108.1%	87.6%
Rest	642	2726	17.6%	44.0%	31.6%
TOTAL	3301	15520	100%	1.1%	43.2%

*) Estimari APIA / APIA Estimates

Top 10 Autoturisme in functie de tipul de alimentare - modele / Top 10 passenger car sales by fuel type and model
Top 10 diesel - model

MODEL	Mai 2016	5 luni 2016	Pondere %	Variatie an precedent %	Pondere diesel/total
DACIA DUSTER	401	1618	8.0%	-31.9%	81.9%
SKODA OCTAVIA	352	1399	7.0%	14.3%	83.4%
DACIA LOGAN	312	1308	6.5%	-6.9%	37.4%
DACIA SANDERO	107	709	3.5%	-23.4%	32.1%
DACIA LOGAN MCV	94	619	3.1%	-12.2%	61.9%
RENAULT CLIO	220	616	3.1%	18.0%	53.9%
VOLKSWAGEN PASSAT	127	557	2.8%	2.4%	92.4%
FORD FOCUS	106	516	2.6%	-0.8%	55.0%
NISSAN QASHQAI	143	499	2.5%	5.1%	84.9%
SKODA RAPID	95	493	2.5%	-27.1%	47.7%
Rest	2586	11788	58.6%	10.3%	55.5%
TOTAL	4543	20122	100%	0.3%	56.1%

*) Estimari APIA / APIA Estimates

Top 10 benzina - model

MODEL	Mai 2016	5 luni 2016	Pondere %	Variatie an precedent %	Pondere benzina/total
DACIA LOGAN	316	2189	14.1%	-55.1%	62.6%
DACIA SANDERO	273	1497	9.6%	2.5%	67.9%
VOLKSWAGEN POLO	186	1022	6.6%	115.2%	97.1%
SKODA RAPID	95	540	3.5%	31.7%	52.3%
RENAULT CLIO	185	527	3.4%	70.0%	46.1%
SKODA FABIA	83	425	2.7%	72.8%	82.0%
FORD FOCUS	84	423	2.7%	52.2%	45.0%
DACIA LOGAN MCV	44	381	2.5%	-16.1%	38.1%
OPEL ASTRA	121	364	2.3%	94.7%	64.8%
DACIA DUSTER	37	358	2.3%	2.3%	18.1%
Rest	1877	7794	50.2%	23.8%	35.5%
TOTAL	3301	15520	100%	1.1%	43.2%

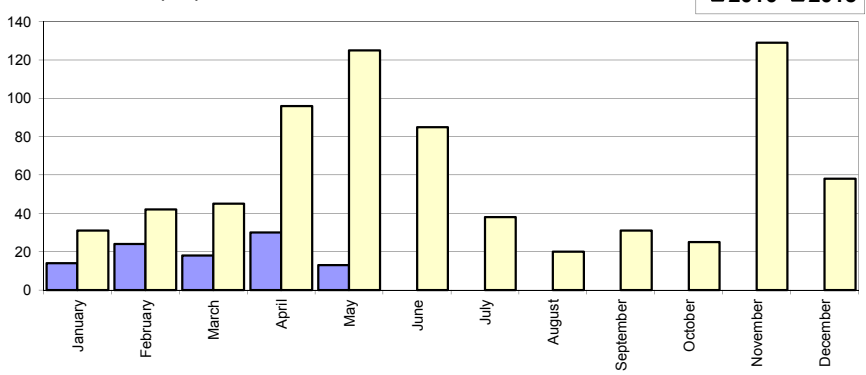
*) Estimari APIA / APIA Estimates

Livrarile comerciale usoare + minibus autohtone / Domestic LCV + minibus sales

Luna/An	2016	2015	Variatie
January	14	31	-54.8%
February	24	42	-42.9%
March	18	45	-60.0%
April	30	96	-68.8%
May	13	125	-89.6%
June	-	85	-
July	-	38	-
August	-	20	-
September	-	31	-
October	-	25	-
November	-	129	-
December	-	58	-
Total	99	339	-70.8%

725

Livrarile autohtone (buc)

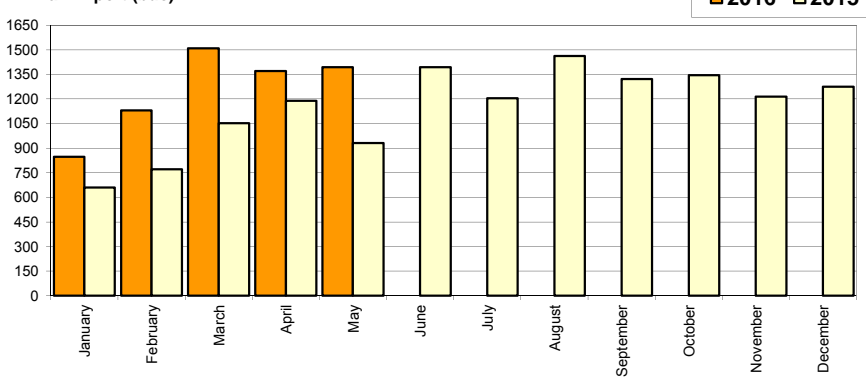


Livrarile comerciale usoare + minibus import / Imported LCV + minibus sales

Luna/An	2016	2015	Variatie
January	848	660	28.5%
February	1 131	772	46.5%
March	1 508	1 053	43.2%
April	1 370	1 189	15.2%
May	1 393	931	49.6%
June	-	1 394	-
July	-	1 204	-
August	-	1 463	-
September	-	1 322	-
October	-	1 346	-
November	-	1 214	-
December	-	1 274	-
Total	6 250	4 605	35.7%

13 822

Livrarile import (buc)

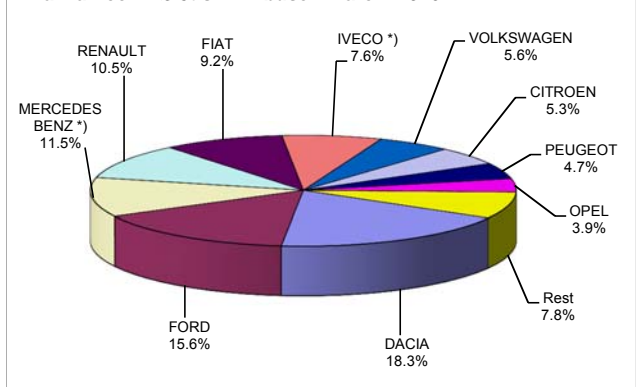


Livrarile comerciale <3.5t si minibus - marci / LCV + minibus sales by make

MARCA	Mai		Variatie Aprilie		2016		Variatie 2015	
	pozitie	unitati	pozitie	procent	pozitie	unitati	pozitie	procent
DACIA	2	214	1	-17.4%	1	1163	1	8.7%
FORD	1	255	2	30.1%	2	991	2	27.1%
MERCEDES BENZ *)	4	169	4	2.4%	3	727	3	23.4%
RENAULT	3	171	3	1.2%	4	664	6	75.7%
FIAT	6	121	6	9.0%	5	585	4	28.6%
IVECO *)	5	145	5	28.3%	6	481	10	151.8%
VOLKSWAGEN	7	91	8	40.0%	7	358	7	10.5%
CITROEN	8	74	9	17.5%	8	339	9	69.5%
PEUGEOT	10	50	10	-12.3%	9	297	8	6.5%
OPEL	9	52	12	6.1%	10	248	5	-40.2%
Rest		64		-58.2%		496		88.6%
TOTAL		1406		0.4%		6349		28.4%

*) Estimari APIA / APIA Estimates

Vanzari com <3.5t si minibus - marci - 2016



Livrarile comerciale <3.5t si minibus - modele / LCV + minibus sales by model

MODEL	Mai		Variatie Aprilie		2016		Variatie 2015	
	pozitie	unitati	pozitie	procent	pozitie	unitati	pozitie	procent
DACIA DOKKER VAN	1	201	1	-12.2%	1	1064	1	45.6%
FORD TRANSIT	2	174	2	41.5%	2	584	2	33.0%
FIAT DUCATO	4	93	5	4.5%	3	471	3	32.7%
IVECO *) DAILY	3	143	3	26.6%	4	471	9	146.6%
RENAULT MASTER	5	87	4	-20.2%	5	352	7	50.4%
MERCEDES BENZ *) SPRINTER	8	60	7	-16.7%	6	304	4	-12.1%
CITROEN JUMPER	7	61	9	10.9%	7	293	10	85.4%
MERCEDES BENZ *) SPRINTER BUS	6	80	8	42.9%	8	268	13	215.3%
PEUGEOT BOXER	10	40	11	-11.1%	9	251	8	17.3%
TOYOTA HI-LUX	22	14	10	-70.2%	10	163	11	3.2%
Rest		453		-1.9%		2128		4.7%
TOTAL		1406		0.4%		6349		28.4%

Vanzari com <3.5t si minibus - modele - 2016

