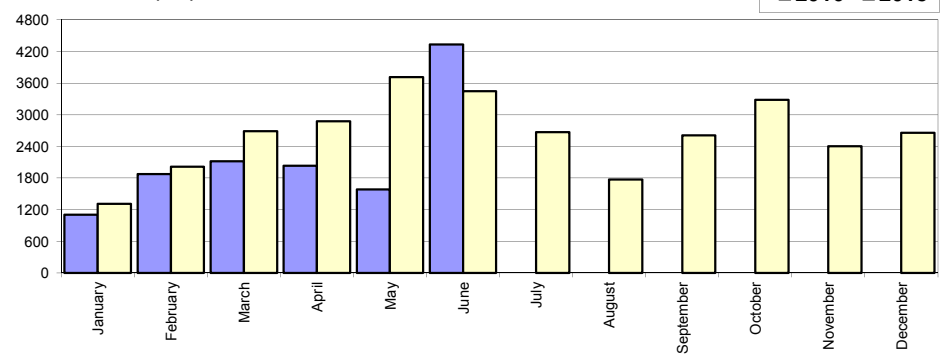


## Livrari autoturisme autohtone / Domestic passenger car sales

Luna/An	2016	2015	Variatie
January	1 103	1 310	-15.8%
February	1 878	2 012	-6.7%
March	2 116	2 689	-21.3%
April	2 035	2 878	-29.3%
May	1 586	3 716	-57.3%
June	4 336	3 448	25.8%
July	-	2 673	-
August	-	1 772	-
September	-	2 612	-
October	-	3 283	-
November	-	2 404	-
December	-	2 660	-
<b>Total</b>	<b>13 054</b>	<b>16 053</b>	<b>-18.7%</b>

31 457

Livrari autohtone (buc)

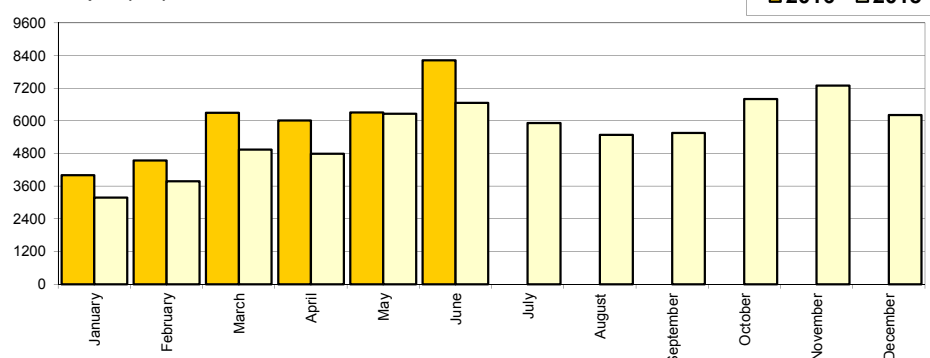


## Livrari autoturisme import / Imported passenger car sales

Luna/An	2016	2015	Variatie
January	4 008	3 185	25.8%
February	4 549	3 775	20.5%
March	6 297	4 942	27.4%
April	6 007	4 791	25.4%
May	6 310	6 257	0.8%
June	8 226	6 664	23.4%
July	-	5 918	-
August	-	5 478	-
September	-	5 551	-
October	-	6 803	-
November	-	7 296	-
December	-	6 208	-
<b>Total</b>	<b>35 397</b>	<b>29 614</b>	<b>19.5%</b>

66 868

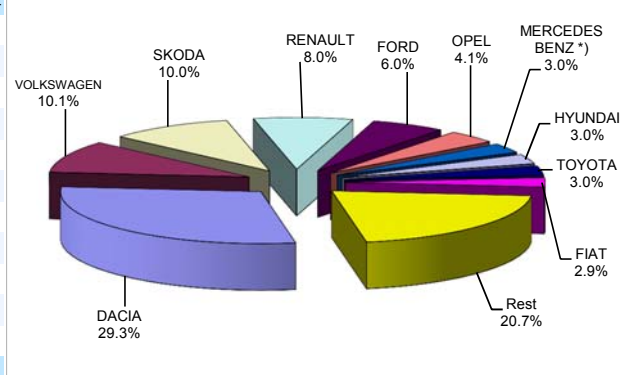
Livrari import (buc)



## Top livrari autoturisme - marci / Passenger car top - by make

MARCA	Iunie		Variatie Mai		2016		Variatie 2015	
	pozitie	unitati	pozitie	procent	pozitie	unitati	pozitie	procent
DACIA	1	4583	1	148.9%	1	14176	1	-16.7%
VOLKSWAGEN	4	1027	3	27.7%	2	4890	2	12.3%
SKODA	3	1041	2	22.9%	3	4829	3	19.1%
RENAULT	2	1290	4	62.5%	4	3871	4	34.5%
FORD	5	545	5	10.1%	5	2913	5	4.4%
OPEL	6	463	6	6.4%	6	1985	6	23.5%
MERCEDES BENZ *)	11	231	7	-20.9%	7	1471	10	37.1%
HYUNDAI	7	451	14	145.1%	8	1444	7	7.4%
TOYOTA	8	427	8	67.5%	9	1432	8	13.9%
FIAT	9	380	10	65.2%	10	1402	9	15.3%
Rest		2124		23.6%		10038		24.2%
<b>TOTAL</b>		<b>12562</b>		<b>59.1%</b>		<b>48451</b>		<b>6.1%</b>

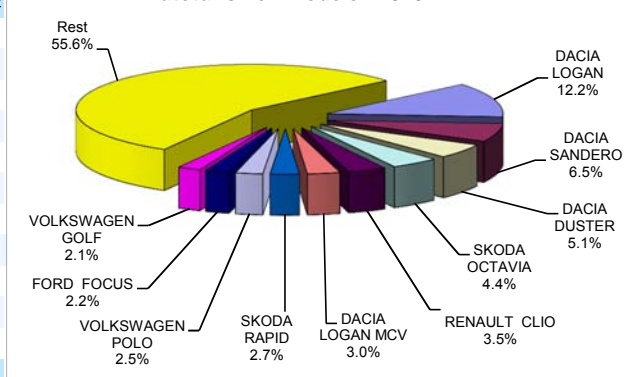
Autoturisme - marci - 2016



## Top livrari autoturisme - modele / Passenger car top - by model

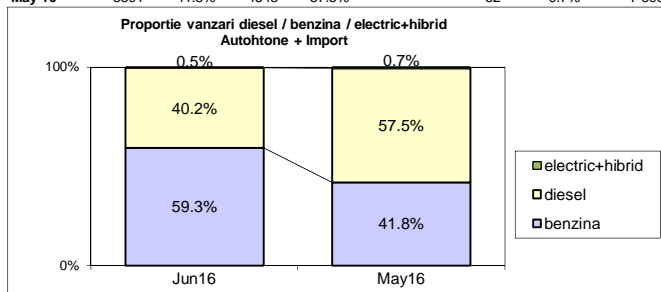
MODEL	Iunie		Variatie Mai		2016		Variatie 2015	
	pozitie	unitati	pozitie	procent	pozitie	unitati	pozitie	procent
DACIA LOGAN	1	2436	1	287.9%	1	5933	1	-26.4%
DACIA SANDERO	2	942	5	147.9%	2	3148	3	8.6%
DACIA DUSTER	4	498	2	13.7%	3	2474	2	-28.7%
SKODA OCTAVIA	5	478	3	15.5%	4	2156	4	16.6%
RENAULT CLIO	3	565	4	39.5%	5	1708	9	58.4%
DACIA LOGAN MCV	6	451	15	226.8%	6	1451	5	-7.4%
SKODA RAPID	8	265	9	39.5%	7	1298	6	-1.9%
VOLKSWAGEN POLO	18	164	7	-15.5%	8	1216	14	69.8%
FORD FOCUS	24	144	8	-24.2%	9	1083	11	6.7%
VOLKSWAGEN GOLF	7	275	6	26.7%	10	1033	7	-13.6%
Rest		6344		34.9%		26951		19.8%
<b>TOTAL</b>		<b>12562</b>		<b>59.1%</b>		<b>48451</b>		<b>6.1%</b>

Autoturisme - modele - 2016

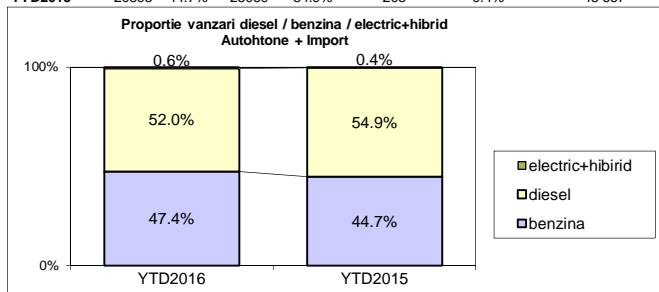


**Segmentare dupa tipul de combustibil / Segmentation by type of fuel**  
**Autohtone + Import / Domestic + Imported**

	benzina		diesel		electric+hibrid		total
Jun-16	7450	59.3%	5052	40.2%	60	0.5%	12 562
May-16	3301	41.8%	4543	57.5%	52	0.7%	7 896



	benzina		diesel		electric+hibrid		total
YTD2016	22970	47.4%	25174	52.0%	307	0.6%	48 451
YTD2015	20393	44.7%	25069	54.9%	205	0.4%	45 667


**Livrari autoturisme in functie de tipul de combustibil / Passenger car sales by fuel type**

Luna/An	2016		Pondere		2015		Variatie 16/15	
	diesel	benzina	diesel	benzina	diesel	benzina	diesel	benzina
January	3 036	2 036	59.4%	39.8%	3 022	1 456	0.5%	39.8%
February	3 429	2 963	53.4%	46.1%	3 430	2 335	0.0%	26.9%
March	4 668	3 693	55.5%	43.9%	4 504	3 107	3.6%	18.9%
April	4 446	3 527	55.3%	43.9%	4 432	3 204	0.3%	10.1%
May	4 543	3 301	57.5%	41.8%	4 671	5 243	-2.7%	-37.0%
June	5 052	7 450	40.2%	59.3%	5 010	5 048	0.8%	47.6%
July	-	-	-	-	4 212	4 338	-	-
August	-	-	-	-	3 925	3 298	-	-
September	-	-	-	-	4 278	3 825	-	-
October	-	-	-	-	4 895	5 112	-	-
November	-	-	-	-	5 072	4 576	-	-
December	-	-	-	-	5 179	3 657	-	-
<b>Total</b>	<b>25 174</b>	<b>22 970</b>	<b>52.0%</b>	<b>47.4%</b>	<b>25 069</b>	<b>20 393</b>	<b>0.4%</b>	<b>12.6%</b>

**Top Electric + Hibrid - marci**

Pozitie	MARCA	6 luni 2016	6 luni 2015	Pondere %	Variatie an precedent %
1	TOYOTA	192	130	62.5%	47.7%
2	LEXUS	73	23	23.8%	217.4%
3	BMW	13	0	4.2%	-
4	LAND ROVER	9	14	2.9%	-35.7%
5	VOLVO	7	0	2.3%	-
6	VOLKSWAGEN	4	3	1.3%	33.3%
7	MITSUBISHI	3	3	1.0%	0.0%
8	MERCEDES	2	8	0.7%	-75.0%
9	FORD	1	0	0.3%	-
10	PORSCHE	1	0	0.3%	-
	Rest	2	24	0.7%	-91.7%
	<b>TOTAL</b>	<b>307</b>	<b>205</b>	<b>100%</b>	<b>49.8%</b>

**Top 10 Autoturisme in functie de tipul de alimentare - marci / Top 10 passenger car sales by fuel type and make**
**Top 10 diesel - marci**

MARCA	Iunie 2016	6 luni 2016	Pondere %	Variatie an precedent %	Pondere diesel/total
DACIA	1193	6124	24.3%	-19.8%	43.2%
SKODA	653	3073	12.2%	12.2%	63.6%
VOLKSWAGEN	536	2585	10.3%	0.6%	52.9%
RENAULT	621	2310	9.2%	20.5%	59.7%
FORD	327	1755	7.0%	-6.8%	60.2%
MERCEDES BENZ *)	188	1220	4.8%	35.1%	82.9%
BMW	204	1069	4.2%	39.6%	91.2%
AUDI	151	768	3.1%	9.7%	68.4%
NISSAN	174	744	3.0%	5.4%	68.9%
OPEL	123	699	2.8%	-4.9%	35.2%
Rest	882	4827	19.2%	6.9%	44.1%
<b>TOTAL</b>	<b>5052</b>	<b>25174</b>	<b>100%</b>	<b>0.4%</b>	<b>52.0%</b>

\*) Estimari APIA / APIA Estimates

**Top 10 benzina - marci**

MARCA	Iunie 2016	6 luni 2016	Pondere %	Variatie an precedent %	Pondere benzina/total
DACIA	3390	8052	35.1%	-14.1%	56.8%
VOLKSWAGEN	491	2301	10.0%	29.1%	47.1%
SKODA	388	1756	7.6%	33.4%	36.4%
RENAULT	669	1560	6.8%	63.2%	40.3%
OPEL	340	1286	5.6%	47.6%	64.8%
FORD	218	1157	5.0%	27.6%	39.7%
TOYOTA	308	879	3.8%	8.1%	61.4%
HYUNDAI	344	854	3.7%	-8.2%	59.1%
FIAT	216	853	3.7%	35.6%	60.8%
SUZUKI	164	624	2.7%	101.3%	89.0%
Rest	922	3648	15.9%	45.9%	33.8%
<b>TOTAL</b>	<b>7450</b>	<b>22970</b>	<b>100%</b>	<b>12.6%</b>	<b>47.4%</b>

\*) Estimari APIA / APIA Estimates

**Top 10 Autoturisme in functie de tipul de alimentare - modele / Top 10 passenger car sales by fuel type and model**
**Top 10 diesel - model**

MODEL	Iunie 2016	6 luni 2016	Pondere %	Variatie an precedent %	Pondere diesel/total
DACIA DUSTER	328	1946	7.7%	-33.6%	78.7%
SKODA OCTAVIA	321	1720	6.8%	13.5%	79.8%
DACIA LOGAN	328	1636	6.5%	-11.6%	27.6%
RENAULT CLIO	248	864	3.4%	36.7%	50.6%
DACIA SANDERO	135	844	3.4%	-21.8%	26.8%
DACIA LOGAN MCV	210	829	3.3%	-11.3%	57.1%
VOLKSWAGEN PASSAT	116	673	2.7%	-4.1%	92.7%
SKODA RAPID	153	646	2.6%	-16.9%	49.8%
NISSAN QASHQAI	143	642	2.6%	9.7%	82.8%
FORD FOCUS	81	597	2.4%	2.2%	55.1%
Rest	2989	14777	58.7%	9.6%	53.3%
<b>TOTAL</b>	<b>5052</b>	<b>25174</b>	<b>100%</b>	<b>0.4%</b>	<b>52.0%</b>

\*) Estimari APIA / APIA Estimates

**Top 10 benzina - model**

MODEL	Iunie 2016	6 luni 2016	Pondere %	Variatie an precedent %	Pondere benzina/total
DACIA LOGAN	2108	4297	18.7%	-30.8%	72.4%
DACIA SANDERO	807	2304	10.0%	26.6%	73.2%
VOLKSWAGEN POLO	154	1176	5.1%	88.5%	96.7%
RENAULT CLIO	317	844	3.7%	89.2%	49.4%
SKODA RAPID	112	652	2.8%	19.4%	50.2%
DACIA LOGAN MCV	241	622	2.7%	-1.6%	42.9%
DACIA DUSTER	170	528	2.3%	-2.0%	21.3%
OPEL ASTRA	158	522	2.3%	73.4%	68.1%
SKODA FABIA	94	519	2.3%	49.1%	76.4%
FORD FOCUS	63	486	2.1%	12.8%	44.9%
Rest	3226	11020	48.0%	29.7%	38.4%
<b>TOTAL</b>	<b>7450</b>	<b>22970</b>	<b>100%</b>	<b>12.6%</b>	<b>47.4%</b>

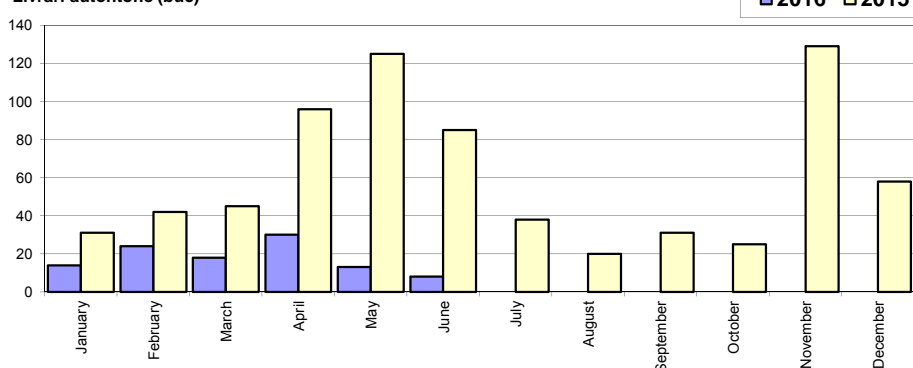
\*) Estimari APIA / APIA Estimates

## Livrarile comerciale usoare + minibus autohtone / Domestic LCV + minibus sales

Luna/An	2016	2015	Variatie
January	14	31	-54.8%
February	24	42	-42.9%
March	18	45	-60.0%
April	30	96	-68.8%
May	13	125	-89.6%
June	8	85	-90.6%
July	-	38	-
August	-	20	-
September	-	31	-
October	-	25	-
November	-	129	-
December	-	58	-
<b>Total</b>	<b>107</b>	<b>424</b>	<b>-74.8%</b>

725

Livrarile autohtone (buc)

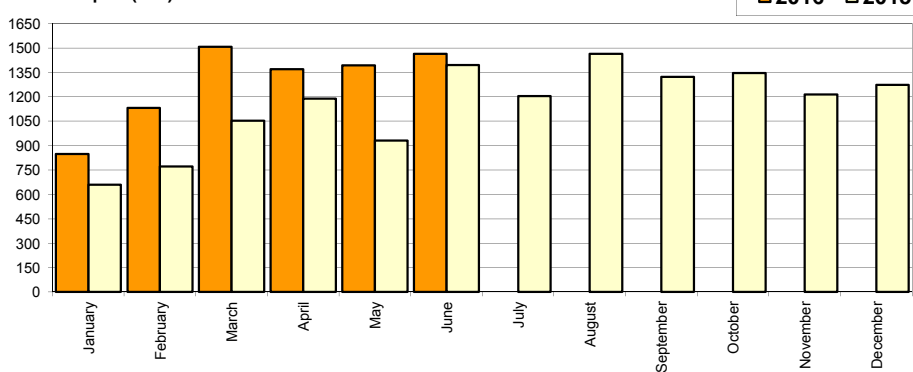


## Livrarile comerciale usoare + minibus import / Imported LCV + minibus sales

Luna/An	2016	2015	Variatie
January	848	660	28.5%
February	1 131	772	46.5%
March	1 508	1 053	43.2%
April	1 370	1 189	15.2%
May	1 393	931	49.6%
June	1 464	1 394	5.0%
July	-	1 204	-
August	-	1 463	-
September	-	1 322	-
October	-	1 346	-
November	-	1 214	-
December	-	1 274	-
<b>Total</b>	<b>7 714</b>	<b>5 999</b>	<b>28.6%</b>

13 822

Livrarile import (buc)

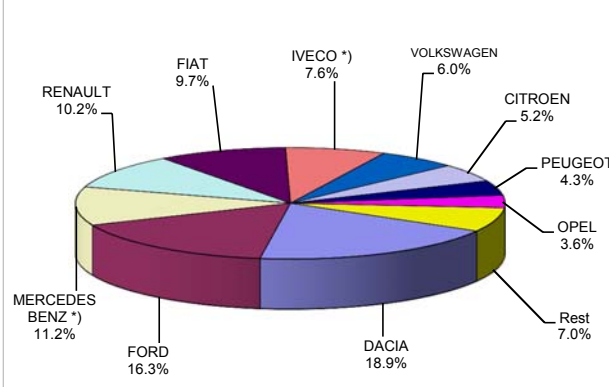


## Livrarile comerciale &lt;3.5t si minibus - marci / LCV + minibus sales by make

MARCA	Iunie		Variatie Mai		2016		Variatie 2015	
	pozitie	unitati	pozitie	procent	pozitie	unitati	pozitie	procent
DACIA	1	317	2	48.1%	1	1480	1	8.9%
FORD	2	285	1	11.8%	2	1276	2	25.3%
MERCEDES BENZ *)	4	146	4	-13.6%	3	873	4	24.5%
RENAULT	5	132	3	-22.8%	4	796	6	51.9%
FIAT	3	175	6	44.6%	5	760	5	32.9%
IVECO *)	7	110	5	-24.1%	6	591	9	117.3%
VOLKSWAGEN	6	110	7	20.9%	7	468	7	11.7%
CITROEN	8	70	8	-5.4%	8	409	10	63.6%
PEUGEOT	9	42	10	-16.0%	9	339	8	6.3%
OPEL	10	33	9	-36.5%	10	281	3	-60.0%
Rest		52		-18.8%		548		91.6%
<b>TOTAL</b>		<b>1472</b>		<b>4.7%</b>		<b>7821</b>		<b>21.8%</b>

\*) Estimari APIA / APIA Estimates

Vanzari com &lt;3.5t si minibus - marci - 2016



## Livrarile comerciale &lt;3.5t si minibus - modele / LCV + minibus sales by model

MODEL	Iunie		Variatie Mai		2016		Variatie 2015	
	pozitie	unitati	pozitie	procent	pozitie	unitati	pozitie	procent
DACIA DOKKER VAN	1	309	1	53.7%	1	1373	1	46.8%
FORD TRANSIT	3	124	2	-28.7%	2	708	2	14.0%
FIAT DUCATO	2	154	4	65.6%	3	625	4	37.1%
IVECO *) DAILY	4	106	3	-25.9%	4	577	8	112.1%
RENAULT MASTER	5	69	5	-20.7%	5	421	7	33.2%
CITROEN JUMPER	6	68	7	11.5%	6	361	10	76.1%
MERCEDES BENZ *) SPRINTER	8	49	8	-18.3%	7	353	5	-14.5%
MERCEDES BENZ *) SPRINTER BUS	9	48	6	-40.0%	8	316	18	259.1%
PEUGEOT BOXER	11	36	10	-10.0%	9	287	9	13.9%
FORD TRANSIT CUSTOM	7	59	15	145.8%	10	187	17	107.8%
Rest		450		1.6%		2613		-5.8%
<b>TOTAL</b>		<b>1472</b>		<b>4.7%</b>		<b>7821</b>		<b>21.8%</b>

\*) Estimari APIA / APIA Estimates

Vanzari com &lt;3.5t si minibus - modele - 2016

