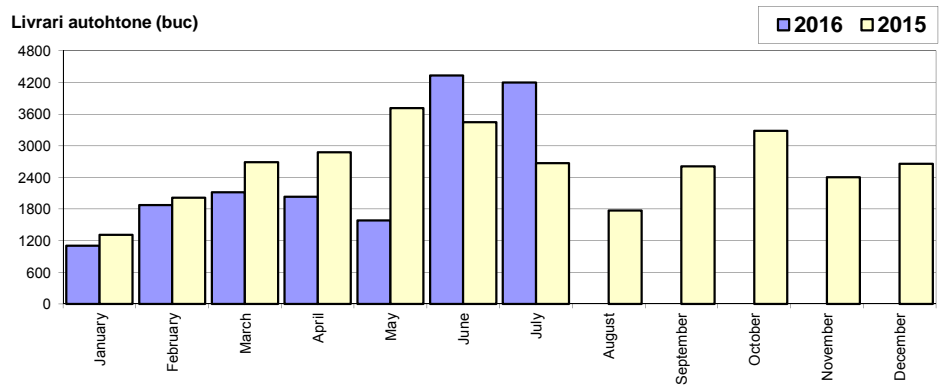


Livrari autoturisme autohtone / Domestic passenger car sales

Luna/An	2016	2015	Variatie
January	1 103	1 310	-15,8%
February	1 878	2 012	-6,7%
March	2 116	2 689	-21,3%
April	2 035	2 878	-29,3%
May	1 586	3 716	-57,3%
June	4 336	3 448	25,8%
July	4 197	2 673	57,0%
August	-	1 772	-
September	-	2 612	-
October	-	3 283	-
November	-	2 404	-
December	-	2 660	-
Total	17 251	18 726	-7,9%

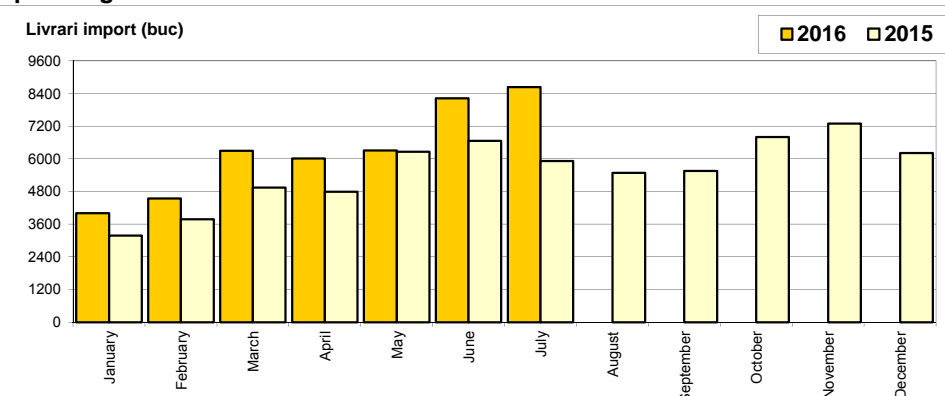
31 457



Livrari autoturisme import / Imported passenger car sales

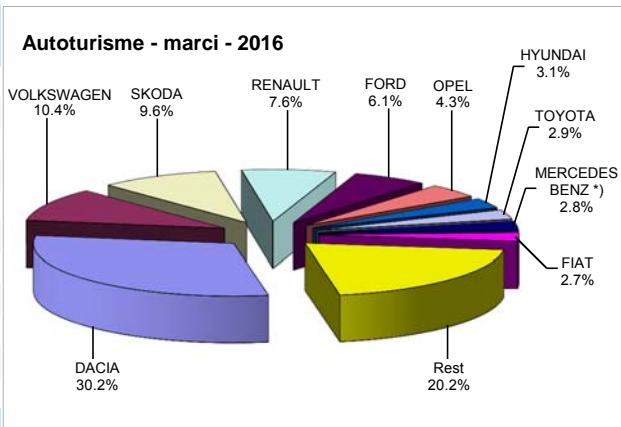
Luna/An	2016	2015	Variatie
January	4 008	3 185	25,8%
February	4 549	3 775	20,5%
March	6 297	4 942	27,4%
April	6 007	4 791	25,4%
May	6 310	6 257	0,8%
June	8 226	6 664	23,4%
July	8 634	5 918	45,9%
August	-	5 478	-
September	-	5 551	-
October	-	6 803	-
November	-	7 296	-
December	-	6 208	-
Total	44 031	35 532	23,9%

66 868



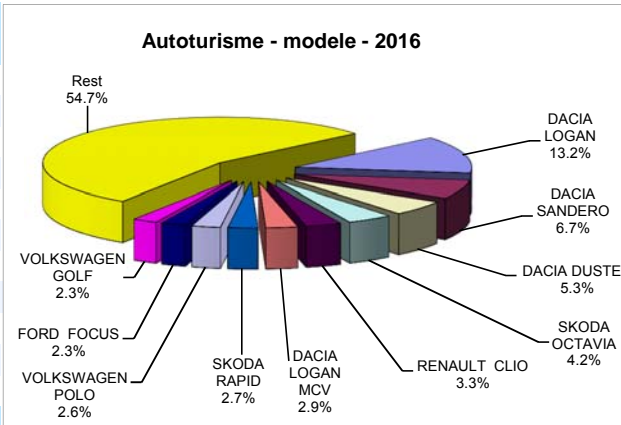
Top livrari autoturisme - marci / Passenger car top - by make

MARCA	Iulie		Variatie lunie		2016		Variatie2015	
	pozitie	unitati	pozitie	procent	pozitie	unitati	pozitie	procent
DACIA	1	4341	1	-5,3%	1	18517	1	-6,6%
VOLKSWAGEN	2	1496	4	45,7%	2	6386	2	23,0%
SKODA	3	1076	3	3,4%	3	5905	3	20,6%
RENAULT	5	778	2	-39,7%	4	4649	5	38,0%
FORD	4	798	5	46,4%	5	3711	4	8,1%
OPEL	6	678	6	46,4%	6	2663	6	38,1%
HYUNDAI	7	473	7	4,9%	7	1917	7	22,1%
TOYOTA	9	366	8	-14,3%	8	1798	8	18,8%
MERCEDES BENZ *)	13	229	11	-0,9%	9	1700	10	31,8%
FIAT	10	264	9	-30,5%	10	1666	9	14,5%
Rest		2332		9,8%		12370		26,4%
TOTAL		12831		2,1%		61282		12,9%



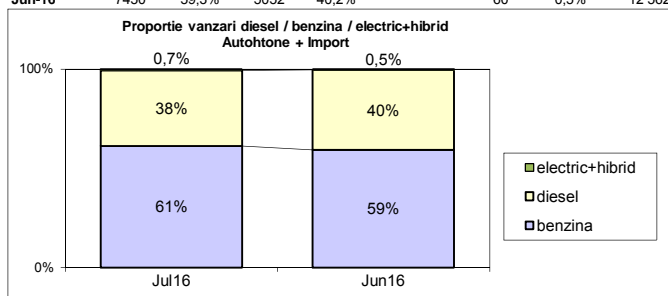
Top livrari autoturisme - modele / Passenger car top - by model

MODEL	Iulie		Variatie lunie		2016		Variatie2015	
	pozitie	unitati	pozitie	procent	pozitie	unitati	pozitie	procent
DACIA LOGAN	1	2126	1	-12,7%	1	8059	1	-13,7%
DACIA SANDERO	2	975	2	3,5%	2	4123	3	14,0%
DACIA DUSTER	3	750	4	50,6%	3	3224	2	-16,7%
SKODA OCTAVIA	4	390	5	-18,4%	4	2546	4	13,5%
RENAULT CLIO	12	291	3	-48,5%	5	1999	9	55,6%
DACIA LOGAN MCV	9	336	6	-25,5%	6	1787	5	-2,5%
SKODA RAPID	6	369	8	39,3%	7	1667	6	11,8%
VOLKSWAGEN POLO	5	390	18	137,8%	8	1606	14	101,3%
FORD FOCUS	10	310	24	115,3%	9	1393	10	14,9%
VOLKSWAGEN GOLF	8	346	7	25,8%	10	1379	7	-2,2%
Rest		6548		3,2%		33499		23,3%
TOTAL		12831		2,1%		61282		12,9%

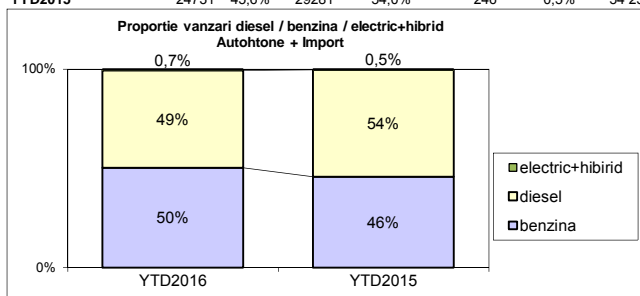


Segmentare dupa tipul de combustibil / Segmentation by type of fuel
Autohtone + Import / Domestic + Imported

	benzina		diesel		electric+hibrid		total
Jul-16	7869	61,3%	4867	37,9%	95	0,7%	12 831
Jun-16	7450	59,3%	5052	40,2%	60	0,5%	12 562



	benzina		diesel		electric+hibrid		total
YTD2016	30839	50,3%	30041	49,0%	402	0,7%	61 282
YTD2015	24731	45,6%	29281	54,0%	246	0,5%	54 258


Livrari autoturisme in functie de tipul de combustibil / Passenger car sales by fuel type

Luna/An	2016		Pondere		2015		Variatie 16/15	
	diesel	benzina	diesel	benzina	diesel	benzina	diesel	benzina
January	3 036	2 036	59,4%	39,8%	3 022	1 456	0,5%	39,8%
February	3 429	2 963	53,4%	46,1%	3 430	2 335	0,0%	26,9%
March	4 668	3 693	55,5%	43,9%	4 504	3 107	3,6%	18,9%
April	4 446	3 527	55,3%	43,9%	4 432	3 204	0,3%	10,1%
May	4 543	3 301	57,5%	41,8%	4 671	5 243	-2,7%	-37,0%
June	5 052	7 450	40,2%	59,3%	5 010	5 048	0,8%	47,6%
July	4 867	7 869	37,9%	61,3%	4 212	4 338	15,6%	81,4%
August	-	-	-	-	3 925	3 298	-	-
September	-	-	-	-	4 278	3 825	-	-
October	-	-	-	-	4 895	5 112	-	-
November	-	-	-	-	5 072	4 576	-	-
December	-	-	-	-	5 179	3 657	-	-
Total	30 041	30 839	49,0%	50,3%	29 281	24 731	2,6%	24,7%

Top Electric + Hibrid - marci

Pozitie	MARCA	7 luni 2016	7 luni 2015	Pondere %	Variatie an precedent %
1	TOYOTA	258	160	64,2%	61,3%
2	LEXUS	86	28	21,4%	207,1%
3	BMW	15	0	3,7%	-
4	LAND ROVER	10	15	2,5%	-33,3%
5	VOLVO	9	0	2,2%	-
6	MERCEDES BENZ *)	6	8	1,5%	-25,0%
7	VOLKSWAGEN	6	5	1,5%	20,0%
8	MITSUBISHI	5	5	1,2%	0,0%
9	RENAULT	3	5	0,7%	-40,0%
10	FORD	2	0	0,5%	-
	Rest	2	20	0,5%	-90,0%
	TOTAL	402	246	100,0%	63,4%

Top 10 Autoturisme in functie de tipul de alimentare - marci / Top 10 passenger car sales by fuel type and make
Top 10 diesel - marci

MARCA	Iulie 2016	7 luni 2016	Pondere %	Variatie an precedent %	Pondere diesel/total
DACIA	1284	7408	24,7%	-13,6%	40,0%
SKODA	535	3608	12,0%	14,5%	61,1%
VOLKSWAGEN	580	3165	10,5%	3,2%	49,6%
RENAULT	416	2726	9,1%	22,6%	58,6%
FORD	428	2183	7,3%	-4,7%	58,8%
MERCEDES BENZ *)	182	1402	4,7%	28,3%	82,5%
BMW	183	1252	4,2%	35,6%	89,6%
AUDI	205	973	3,2%	13,5%	72,0%
NISSAN	115	859	2,9%	5,9%	66,3%
OPEL	85	784	2,6%	-10,5%	29,4%
Rest	854	5681	18,9%	4,9%	41,4%
TOTAL	4867	30041	100%	2,6%	49,0%

*) Estimari APIA / APIA Estimates

Top 10 benzina - marci

MARCA	Iulie 2016	7 luni 2016	Pondere %	Variatie an precedent %	Pondere benzina/total
DACIA	3057	11109	36,0%	-1,3%	60,0%
VOLKSWAGEN	914	3215	10,4%	51,7%	50,3%
SKODA	541	2297	7,4%	31,7%	38,9%
RENAULT	360	1920	6,2%	68,3%	41,3%
OPEL	593	1879	6,1%	78,8%	70,6%
FORD	369	1526	4,9%	33,5%	41,1%
HYUNDAI	320	1174	3,8%	8,1%	61,2%
TOYOTA	228	1107	3,6%	14,8%	61,6%
FIAT	244	1097	3,6%	47,4%	65,8%
SUZUKI	342	966	3,1%	116,1%	90,4%
Rest	901	4549	14,8%	49,6%	35,0%
TOTAL	7869	30839	100%	24,7%	50,3%

*) Estimari APIA / APIA Estimates

Top 10 Autoturisme in functie de tipul de alimentare - modele / Top 10 passenger car sales by fuel type and model
Top 10 diesel - model

MODEL	Iulie 2016	7 luni 2016	Pondere %	Variatie an precedent %	Pondere diesel/total
DACIA DUSTER	524	2470	8,2%	-24,8%	76,6%
SKODA OCTAVIA	245	1965	6,5%	11,0%	77,2%
DACIA LOGAN	305	1941	6,5%	-6,5%	24,1%
DACIA SANDERO	216	1060	3,5%	-12,7%	25,7%
RENAULT CLIO	89	953	3,2%	32,9%	47,7%
DACIA LOGAN MCV	122	951	3,2%	-7,8%	53,2%
SKODA RAPID	138	784	2,6%	-7,1%	47,0%
VOLKSWAGEN PASSAT	108	781	2,6%	-7,0%	92,3%
NISSAN QASHQAI	89	731	2,4%	8,5%	81,0%
FORD FOCUS	117	714	2,4%	8,3%	51,3%
Rest	2914	17691	58,9%	9,4%	50,9%
TOTAL	4867	30041	100%	2,6%	49,0%

*) Estimari APIA / APIA Estimates

Top 10 benzina - model

MODEL	Iulie 2016	7 luni 2016	Pondere %	Variatie an precedent %	Pondere benzina/total
DACIA LOGAN	1821	6118	19,8%	-15,8%	75,9%
DACIA SANDERO	759	3063	9,9%	27,5%	74,3%
VOLKSWAGEN POLO	376	1552	5,0%	122,7%	96,6%
RENAULT CLIO	202	1046	3,4%	84,2%	52,3%
SKODA RAPID	231	883	2,9%	36,5%	53,0%
OPEL ASTRA	326	848	2,7%	119,1%	75,3%
DACIA LOGAN MCV	214	836	2,7%	4,4%	46,8%
DACIA DUSTER	226	754	2,4%	29,3%	23,4%
SUZUKI VITARA	276	710	2,3%	315,2%	88,1%
VOLKSWAGEN GOLF	252	705	2,3%	51,6%	51,1%
Rest	3186	14324	46,4%	33,3%	40,3%
TOTAL	7869	30839	100%	24,7%	50,3%

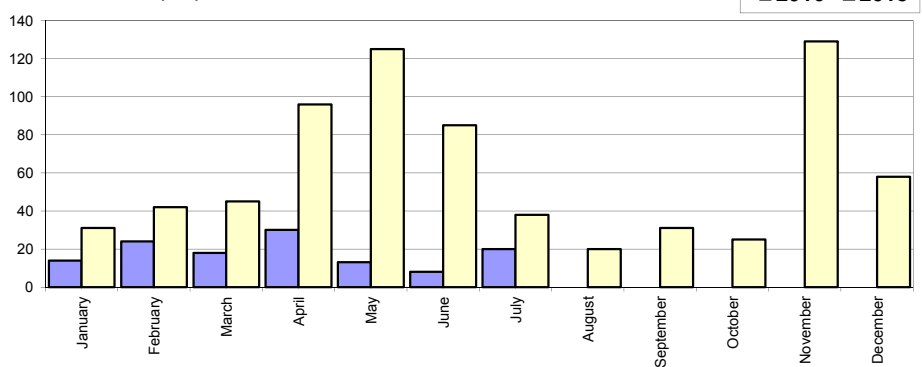
*) Estimari APIA / APIA Estimates

Livrari comerciale usoare + minibus autohtone / Domestic LCV + minibus sales

Luna/An	2016	2015	Variatie
January	14	31	-54,8%
February	24	42	-42,9%
March	18	45	-60,0%
April	30	96	-68,8%
May	13	125	-89,6%
June	8	85	-90,6%
July	20	38	-47,4%
August	-	20	-
September	-	31	-
October	-	25	-
November	-	129	-
December	-	58	-
Total	127	462	-72,5%

725

Livrari autohtone (buc)

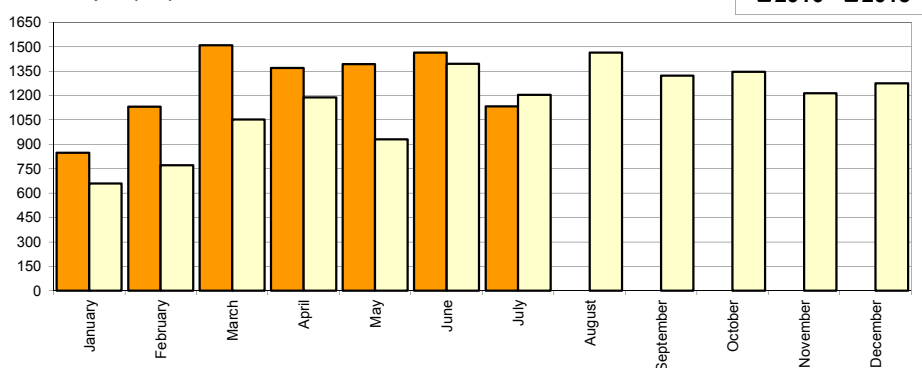


Livrari comerciale usoare + minibus import / Imported LCV + minibus sales

Luna/An	2016	2015	Variatie
January	848	660	28,5%
February	1 131	772	46,5%
March	1 508	1 053	43,2%
April	1 370	1 189	15,2%
May	1 393	931	49,6%
June	1 464	1 394	5,0%
July	1 133	1 204	-5,9%
August	-	1 463	-
September	-	1 322	-
October	-	1 346	-
November	-	1 214	-
December	-	1 274	-
Total	8 847	7 203	22,8%

13 822

Livrari import (buc)

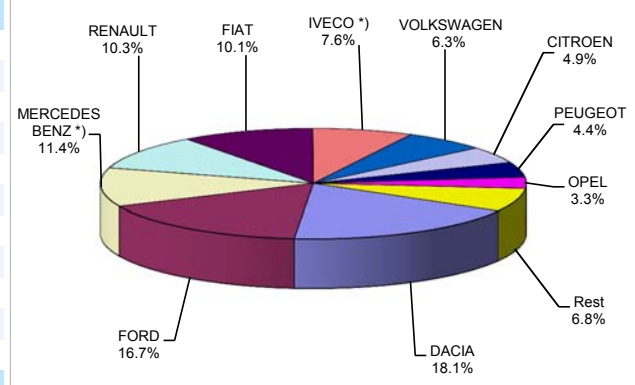


Livrari comerciale <3.5t si minibus - marci / LCV + minibus sales by make

MARCA	Iulie		Variatie lunie		2016		Variatie 2015	
	pozitie	unitati	pozitie	procent	pozitie	unitati	pozitie	procent
DACIA	4	145	1	-54,3%	1	1625	1	8,7%
FORD	1	225	2	-21,1%	2	1501	2	26,4%
MERCEDES BENZ *)	2	147	4	0,7%	3	1020	4	14,5%
RENAULT	5	131	5	-0,8%	4	927	6	43,3%
FIAT	3	145	3	-17,1%	5	905	5	34,9%
IVECO *)	7	95	7	-13,6%	6	686	9	111,1%
VOLKSWAGEN	6	98	6	-10,9%	7	566	7	16,7%
CITROEN	9	30	8	-57,1%	8	439	10	39,4%
PEUGEOT	8	59	9	40,5%	9	398	8	15,7%
OPEL	13	13	10	-60,6%	10	294	3	-69,6%
Rest		65		25,0%		613		82,4%
TOTAL		1153		-21,7%		8974		17,1%

*) Estimari APIA / APIA Estimates

Vanzari com <3.5t si minibus - marci - 2016



Livrari comerciale <3.5t si minibus - modele / LCV + minibus sales by model

MODEL	Iulie		Variatie lunie		2016		Variatie 2015	
	pozitie	unitati	pozitie	procent	pozitie	unitati	pozitie	procent
DACIA DOKKER VAN	1	125	1	-59,6%	1	1498	1	45,0%
FORD TRANSIT	3	100	3	-19,4%	2	808	3	15,3%
FIAT DUCATO	2	122	2	-20,8%	3	747	4	38,3%
IVECO *) DAILY	4	95	4	-10,4%	4	672	8	106,8%
RENAULT MASTER	5	83	5	20,3%	5	504	7	27,9%
MERCEDES BENZ *) SPRINTER	6	59	8	20,4%	6	412	5	-15,9%
CITROEN JUMPER	12	29	6	-57,4%	7	390	10	48,9%
MERCEDES BENZ *) SPRINTER BUS	8	48	9	0,0%	8	364	12	123,3%
PEUGEOT BOXER	7	50	11	38,9%	9	337	9	21,7%
FORD TRANSIT CUSTOM	14	24	7	-59,3%	10	211	19	108,9%
Rest		418		-7,1%		3031		-10,3%
TOTAL		1153		-21,7%		8974		17,1%

*) Estimari APIA / APIA Estimates

Vanzari com <3.5t si minibus - modele - 2016

