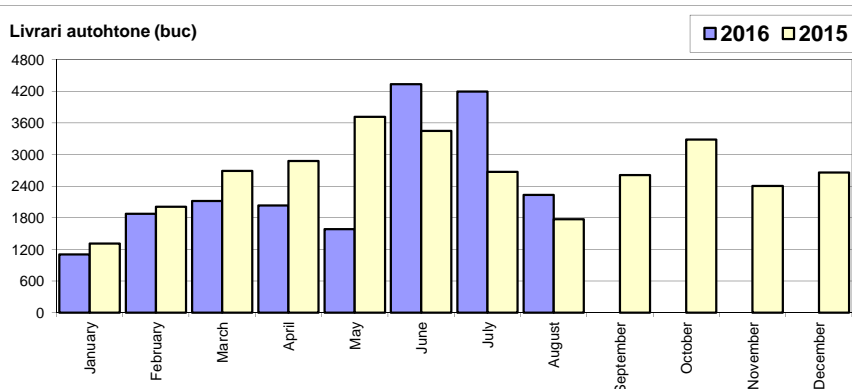


## Livrarile autoturismelor autohtone / Domestic passenger car sales

Luna/An	2016	2015	Variatie
January	1 103	1 310	-15.8%
February	1 878	2 012	-6.7%
March	2 116	2 689	-21.3%
April	2 035	2 878	-29.3%
May	1 586	3 716	-57.3%
June	4 336	3 448	25.8%
July	4 197	2 673	57.0%
August	2 231	1 772	25.9%
September	-	2 612	-
October	-	3 283	-
November	-	2 404	-
December	-	2 660	-
<b>Total</b>	<b>19 482</b>	<b>20 498</b>	<b>-5.0%</b>

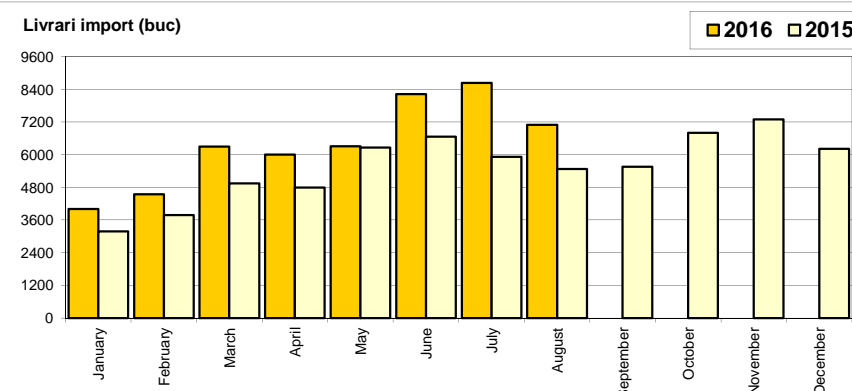
31 457



## Livrarile autoturismelor import / Imported passenger car sales

Luna/An	2016	2015	Variatie
January	4 008	3 185	25.8%
February	4 549	3 775	20.5%
March	6 297	4 942	27.4%
April	6 007	4 791	25.4%
May	6 310	6 257	0.8%
June	8 226	6 664	23.4%
July	8 634	5 918	45.9%
August	7 093	5 478	29.5%
September	-	5 551	-
October	-	6 803	-
November	-	7 296	-
December	-	6 208	-
<b>Total</b>	<b>51 124</b>	<b>41 010</b>	<b>24.7%</b>

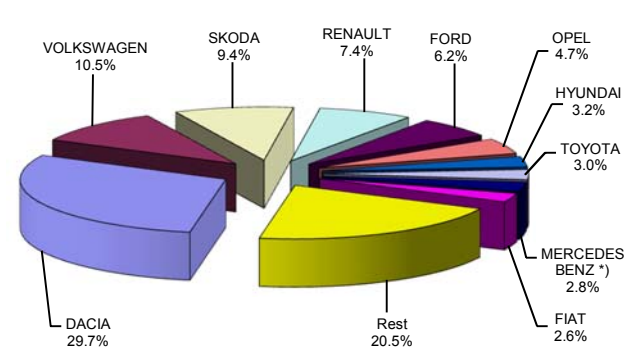
66 868



## Top livrarile autoturismelor - marci / Passenger car top - by make

MARCA	August		Variatie Iulie		2016		Variatie 2015	
	pozitie	unitati	pozitie	procent	pozitie	unitati	pozitie	procent
DACIA	1	2451	1	-43.5%	1	<b>20968</b>	1	-3.7%
VOLKSWAGEN	2	998	2	-33.3%	2	<b>7384</b>	2	18.7%
SKODA	3	706	3	-34.4%	3	<b>6611</b>	3	20.2%
RENAULT	6	594	5	-23.7%	4	<b>5243</b>	5	41.4%
FORD	5	651	4	-18.4%	5	<b>4362</b>	4	12.1%
OPEL	4	662	6	-2.4%	6	<b>3325</b>	6	41.6%
HYUNDAI	9	320	7	-32.4%	7	<b>2237</b>	7	25.0%
TOYOTA	8	337	9	-7.9%	8	<b>2135</b>	8	23.1%
MERCEDES BENZ *)	10	301	13	31.4%	9	<b>2001</b>	10	32.1%
FIAT	16	180	10	-31.8%	10	<b>1846</b>	9	14.7%
Rest		2124		-8.9%		<b>14494</b>		27.0%
<b>TOTAL</b>		<b>9324</b>		<b>-27.3%</b>		<b>70606</b>		<b>14.8%</b>

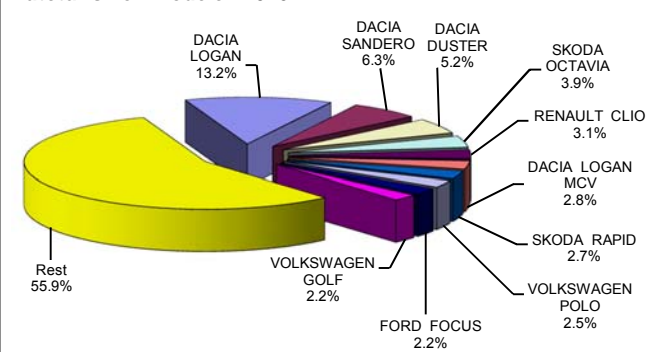
## Autoturismele - marci - 2016



## Top livrarile autoturismelor - modele / Passenger car top - by model

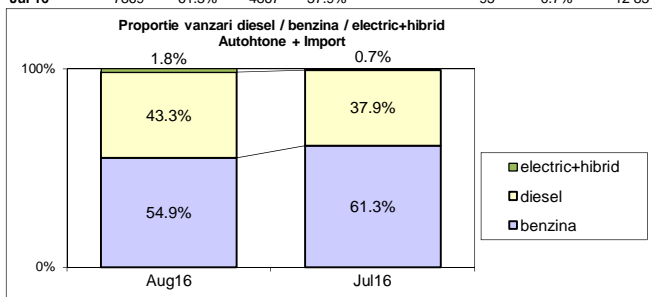
MODEL	August		Variatie Iulie		2016		Variatie 2015	
	pozitie	unitati	pozitie	procent	pozitie	unitati	pozitie	procent
DACIA LOGAN	1	1256	1	-40.9%	1	<b>9315</b>	1	-10.1%
DACIA SANDERO	6	310	2	-68.2%	2	<b>4433</b>	3	17.3%
DACIA DUSTER	2	480	3	-36.0%	3	<b>3704</b>	2	-12.4%
SKODA OCTAVIA	7	238	5	-39.0%	4	<b>2784</b>	4	9.8%
RENAULT CLIO	13	160	12	-45.0%	5	<b>2159</b>	9	52.0%
DACIA LOGAN MCV	11	180	9	-46.4%	6	<b>1967</b>	5	-4.2%
SKODA RAPID	8	238	6	-35.5%	7	<b>1905</b>	7	14.2%
VOLKSWAGEN POLO	20	142	4	-63.6%	8	<b>1748</b>	12	69.4%
FORD FOCUS	10	183	10	-41.0%	9	<b>1576</b>	8	9.3%
VOLKSWAGEN GOLF	9	195	8	-43.6%	10	<b>1574</b>	6	-11.1%
Rest		5942		-9.3%		<b>39441</b>		26.3%
<b>TOTAL</b>		<b>9324</b>		<b>-27.3%</b>		<b>70606</b>		<b>14.8%</b>

## Autoturismele - modele - 2016

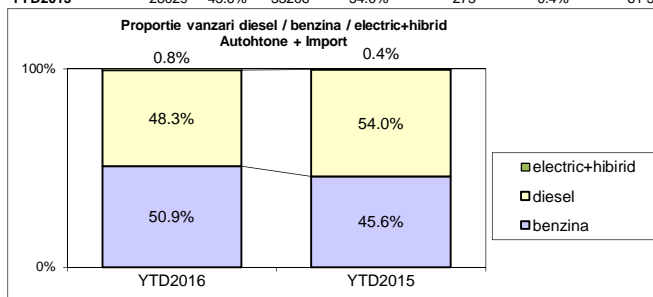


**Segmentare dupa tipul de combustibil / Segmentation by type of fuel**  
**Autohtone + Import / Domestic + Imported**

	benzina	diesel	electric+hibrid	total
Aug-16	5121 54.9%	4034 43.3%	169 1.8%	9 324
Jul-16	7869 61.3%	4867 37.9%	95 0.7%	12 831



	benzina	diesel	electric+hibrid	total
YTD2016	35960 50.9%	34075 48.3%	571 0.8%	70 606
YTD2015	28029 45.6%	33206 54.0%	273 0.4%	61 508


**Livrari autoturisme in functie de tipul de combustibil / Passenger car sales by fuel type**

Luna/An	2016		Pondere		2015		Variatie 16/15	
	diesel	benzina	diesel	benzina	diesel	benzina	diesel	benzina
January	3 036	2 036	59.4%	39.8%	3 022	1 466	0.5%	39.8%
February	3 429	2 963	53.4%	46.1%	3 430	2 335	0.0%	26.9%
March	4 668	3 693	55.5%	43.9%	4 504	3 107	3.6%	18.9%
April	4 446	3 527	55.3%	43.9%	4 432	3 204	0.3%	10.1%
May	4 543	3 301	57.5%	41.8%	4 671	5 243	-2.7%	-37.0%
June	5 052	7 450	40.2%	59.3%	5 010	5 048	0.8%	47.6%
July	4 867	7 869	37.9%	61.3%	4 212	4 338	15.6%	81.4%
August	4 034	5 121	43.3%	54.9%	3 925	3 298	2.8%	55.3%
September	-	-	-	-	4 278	3 825	-	-
October	-	-	-	-	4 895	5 112	-	-
November	-	-	-	-	5 072	4 576	-	-
December	-	-	-	-	5 179	3 657	-	-
<b>Total</b>	<b>34 075</b>	<b>35 960</b>	<b>48.3%</b>	<b>50.9%</b>	<b>33 206</b>	<b>28 029</b>	<b>2.6%</b>	<b>28.3%</b>

**Top Electric + Hibrid - marci**

Pozitie	MARCA	8 luni 2016	8 luni 2015	Pondere %	Variatie an precedent %
1	TOYOTA	391	179	68.5%	118.4%
2	LEXUS	105	31	18.4%	238.7%
3	BMW	23	0	4.0%	-
4	LAND ROVER	11	15	1.9%	-26.7%
5	MERCEDES BENZ *)	10	10	1.8%	0.0%
6	VOLVO	9	0	1.6%	-
7	MITSUBISHI	6	5	1.1%	20.0%
8	VOLKSWAGEN	6	5	1.1%	20.0%
9	RENAULT	3	5	0.5%	-40.0%
10	FORD	2	0	0.4%	-
	Rest	5	23	0.9%	-78.3%
	<b>TOTAL</b>	<b>571</b>	<b>273</b>	<b>100%</b>	<b>109.2%</b>

\*) Estimari APIA / APIA Estimates

**Top 10 Autoturisme in functie de tipul de alimentare - marci / Top 10 passenger car sales by fuel type and make**
**Top 10 diesel - marci**

MARCA	August 2016	8 luni 2016	Pondere %	Variatie an precedent %	Pondere diesel/total
DACIA	929	8337	24.5%	-10.7%	39.8%
SKODA	380	3988	11.7%	14.6%	60.3%
VOLKSWAGEN	494	3659	10.7%	-5.3%	49.6%
RENAULT	333	3059	9.0%	25.1%	58.3%
FORD	402	2585	7.6%	0.9%	59.3%
MERCEDES BENZ *)	224	1626	4.8%	26.6%	81.3%
BMW	198	1450	4.3%	30.6%	89.8%
AUDI	153	1126	3.3%	12.8%	73.0%
NISSAN	128	987	2.9%	7.8%	65.4%
OPEL	109	893	2.6%	-17.0%	26.9%
Rest	684	6365	18.7%	3.8%	39.7%
<b>TOTAL</b>	<b>4034</b>	<b>34075</b>	<b>100%</b>	<b>2.6%</b>	<b>48.3%</b>

\*) Estimari APIA / APIA Estimates

**Top 10 benzina - marci**

MARCA	August 2016	8 luni 2016	Pondere %	Variatie an precedent %	Pondere benzina/total
DACIA	1522	12631	35.1%	1.5%	60.2%
VOLKSWAGEN	504	3719	10.3%	57.9%	50.4%
SKODA	326	2623	7.3%	29.8%	39.7%
OPEL	553	2432	6.8%	91.2%	73.1%
RENAULT	261	2181	6.1%	73.6%	41.6%
FORD	249	1775	4.9%	33.8%	40.7%
HYUNDAI	240	1414	3.9%	15.2%	63.2%
SUZUKI	333	1299	3.6%	127.1%	91.2%
FIAT	172	1269	3.5%	49.1%	68.7%
TOYOTA	154	1261	3.5%	13.2%	59.1%
Rest	807	5356	14.9%	49.0%	35.5%
<b>TOTAL</b>	<b>5121</b>	<b>35960</b>	<b>100%</b>	<b>28.3%</b>	<b>50.9%</b>

\*) Estimari APIA / APIA Estimates

**Top 10 Autoturisme in functie de tipul de alimentare - modele / Top 10 passenger car sales by fuel type and model**
**Top 10 diesel - model**

MODEL	August 2016	8 luni 2016	Pondere %	Variatie an precedent %	Pondere diesel/total
DACIA DUSTER	371	2841	8.3%	-21.5%	76.7%
DACIA LOGAN	217	2158	6.3%	-1.4%	23.2%
SKODA OCTAVIA	169	2134	6.3%	8.4%	76.7%
DACIA SANDERO	93	1153	3.4%	-7.8%	26.0%
RENAULT CLIO	83	1036	3.0%	32.5%	48.0%
DACIA LOGAN MCV	74	1025	3.0%	-12.2%	52.1%
SKODA RAPID	93	877	2.6%	-6.0%	46.0%
VOLKSWAGEN PASSAT	85	866	2.5%	-11.5%	92.9%
NISSAN QASHQAI	110	841	2.5%	10.7%	79.8%
FORD FOCUS	86	800	2.3%	2.0%	50.8%
Rest	2653	20344	59.7%	8.4%	49.9%
<b>TOTAL</b>	<b>4034</b>	<b>34075</b>	<b>100%</b>	<b>2.6%</b>	<b>48.3%</b>

\*) Estimari APIA / APIA Estimates

**Top 10 benzina - model**

MODEL	August 2016	8 luni 2016	Pondere %	Variatie an precedent %	Pondere benzina/total
DACIA LOGAN	1039	7157	19.9%	-12.4%	76.8%
DACIA SANDERO	217	3280	9.1%	29.8%	74.0%
VOLKSWAGEN POLO	111	1663	4.6%	118.8%	95.1%
OPEL ASTRA	301	1149	3.2%	152.5%	77.1%
RENAULT CLIO	77	1123	3.1%	76.0%	52.0%
SKODA RAPID	145	1028	2.9%	39.9%	54.0%
SUZUKI VITARA	291	1001	2.8%	298.8%	89.5%
DACIA LOGAN MCV	106	942	2.6%	6.3%	47.9%
DACIA DUSTER	109	863	2.4%	42.2%	23.3%
VOLKSWAGEN GOLF	117	822	2.3%	54.5%	52.2%
Rest	2608	16932	47.1%	35.8%	41.1%
<b>TOTAL</b>	<b>5121</b>	<b>35960</b>	<b>100%</b>	<b>28.3%</b>	<b>50.9%</b>

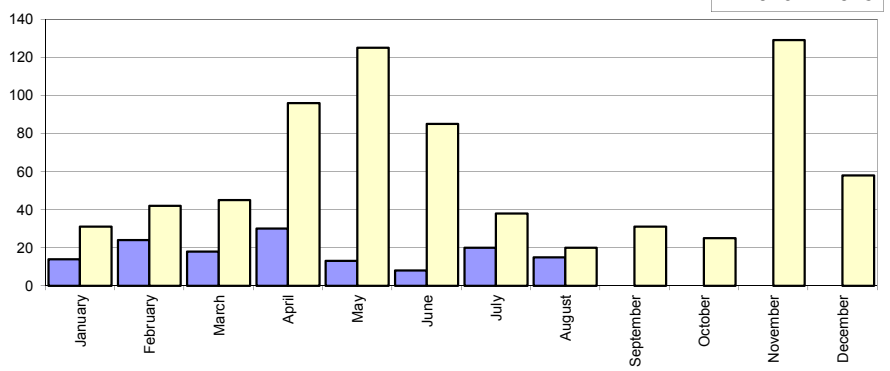
\*) Estimari APIA / APIA Estimates

## Livrari comerciale usoare + minibus autohtone / Domestic LCV + minibus sales

Luna/An	2016	2015	Variatie
January	14	31	-54.8%
February	24	42	-42.9%
March	18	45	-60.0%
April	30	96	-68.8%
May	13	125	-89.6%
June	8	85	-90.6%
July	20	38	-47.4%
August	15	20	-25.0%
September	-	31	-
October	-	25	-
November	-	129	-
December	-	58	-
<b>Total</b>	<b>142</b>	<b>482</b>	<b>-70.5%</b>

725

Livrari autohtone (buc)

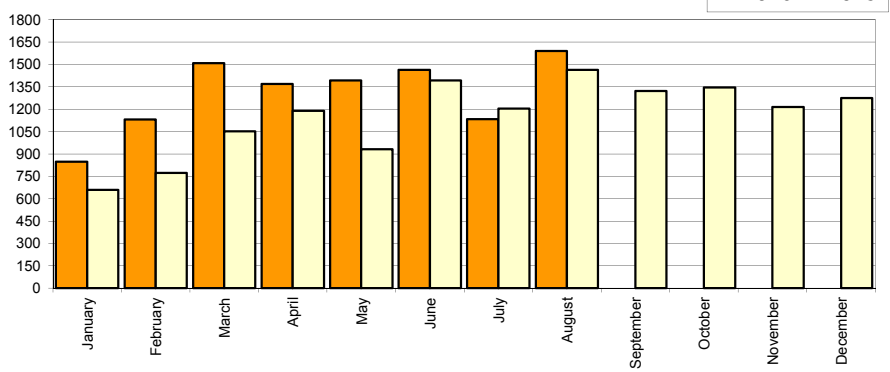


## Livrari comerciale usoare + minibus import / Imported LCV + minibus sales

Luna/An	2016	2015	Variatie
January	848	660	28.5%
February	1 131	772	46.5%
March	1 508	1 053	43.2%
April	1 370	1 189	15.2%
May	1 393	931	49.6%
June	1 464	1 394	5.0%
July	1 133	1 204	-5.9%
August	1 590	1 463	8.7%
September	-	1 322	-
October	-	1 346	-
November	-	1 214	-
December	-	1 274	-
<b>Total</b>	<b>10 437</b>	<b>8 666</b>	<b>20.4%</b>

13 822

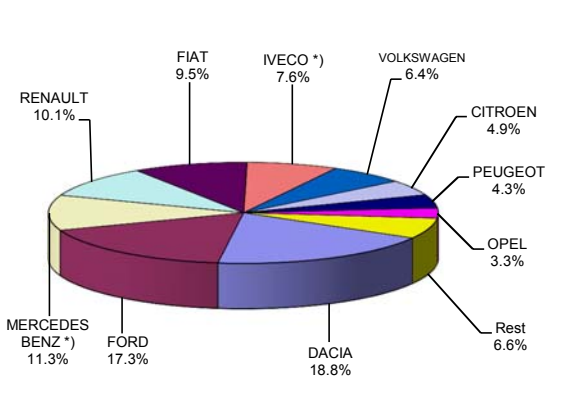
Livrari import (buc)



## Livrari comerciale &lt;3.5t si minibus - marci / LCV + minibus sales by make

MARCA	August		Variatie Iulie		2016		Variatie 2015	
	pozitie	unitati	pozitie	procent	pozitie	unitati	pozitie	procent
DACIA	1	361	4	149.0%	1	1986	1	16.0%
FORD	2	324	1	44.0%	2	1825	3	36.6%
MERCEDES BENZ *)	3	173	2	17.7%	3	1193	4	15.7%
RENAULT	4	146	5	11.5%	4	1073	6	46.6%
FIAT	7	100	3	-31.0%	5	1005	5	24.7%
IVECO *)	5	114	7	20.0%	6	800	8	98.5%
VOLKSWAGEN	6	113	6	15.3%	7	679	7	29.8%
CITROEN	8	82	9	173.3%	8	521	10	47.2%
PEUGEOT	9	57	8	-3.4%	9	455	9	18.2%
OPEL	10	51	13	292.3%	10	345	2	-76.8%
Rest		84		29.2%		697		83.4%
<b>TOTAL</b>		<b>1605</b>		<b>39.2%</b>		<b>10579</b>		<b>15.6%</b>

Vanzari com &lt;3.5t si minibus - marci - 2016



\*) Estimari APIA / APIA Estimates

## Livrari comerciale &lt;3.5t si minibus - modele / LCV + minibus sales by model

MODEL	August		Variatie Iulie		2016		Variatie 2015	
	pozitie	unitati	pozitie	procent	pozitie	unitati	pozitie	procent
DACIA DOKKER VAN	1	346	1	176.8%	1	1844	2	49.9%
FORD TRANSIT	2	205	3	105.0%	2	1013	3	30.5%
FIAT DUCATO	5	84	2	-31.2%	3	831	4	27.3%
IVECO *) DAILY	3	114	4	20.0%	4	786	8	95.0%
RENAULT MASTER	4	94	5	13.3%	5	598	6	33.5%
MERCEDES BENZ *) SPRINTER	8	68	6	15.3%	6	480	5	-17.5%
CITROEN JUMPER	6	77	12	165.5%	7	467	10	57.2%
MERCEDES BENZ *) SPRINTER BUS	7	74	8	54.2%	8	438	12	167.1%
PEUGEOT BOXER	10	53	7	6.0%	9	390	9	23.4%
FORD TRANSIT CUSTOM	9	56	14	133.3%	10	267	20	132.2%
Rest		434		3.8%		3465		-16.8%
<b>TOTAL</b>		<b>1605</b>		<b>39.2%</b>		<b>10579</b>		<b>15.6%</b>

Vanzari com &lt;3.5t si minibus - modele - 2016

