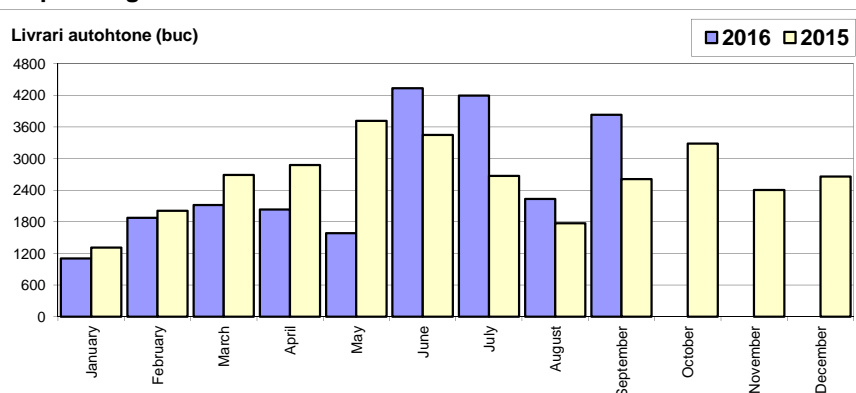


## Livrari autoturisme autohtone / Domestic passenger car sales

Luna/An	2016	2015	Variatie
January	1 103	1 310	-15.8%
February	1 878	2 012	-6.7%
March	2 116	2 689	-21.3%
April	2 035	2 878	-29.3%
May	1 586	3 716	-57.3%
June	4 336	3 448	25.8%
July	4 197	2 673	57.0%
August	2 231	1 772	25.9%
September	3 831	2 612	46.7%
October	-	3 283	-
November	-	2 404	-
December	-	2 660	-
<b>Total</b>	<b>23 313</b>	<b>23 110</b>	<b>0.9%</b>

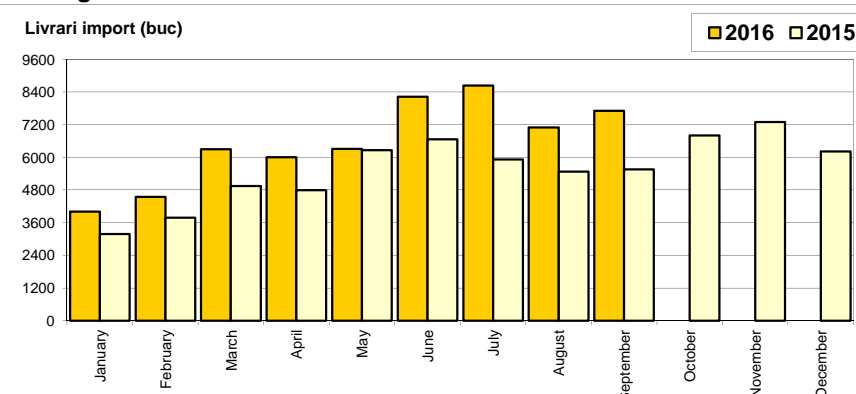
31 457



## Livrari autoturisme import / Imported passenger car sales

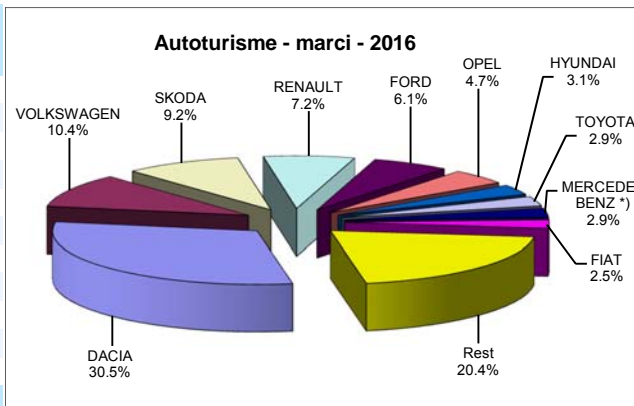
Luna/An	2016	2015	Variatie
January	4 008	3 185	25.8%
February	4 549	3 775	20.5%
March	6 297	4 942	27.4%
April	6 007	4 791	25.4%
May	6 310	6 257	0.8%
June	8 226	6 664	23.4%
July	8 634	5 918	45.9%
August	7 093	5 478	29.5%
September	7 710	5 551	38.9%
October	-	6 803	-
November	-	7 296	-
December	-	6 208	-
<b>Total</b>	<b>58 834</b>	<b>46 561</b>	<b>26.4%</b>

66 868



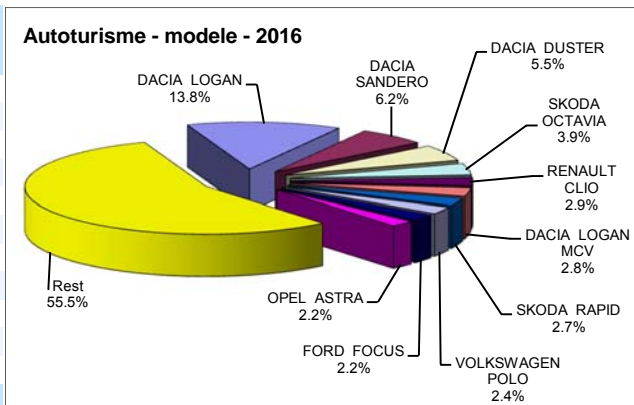
## Top livrari autoturisme - marci / Passenger car top - by make

MARCA	Septembrie		Variatie August		2016		Variatie 2015	
	pozitie	unitati	pozitie	procent	pozitie	unitati	pozitie	procent
DACIA	1	4 122	1	68.2%	1	<b>25 090</b>	1	2.2%
VOLKSWAGEN	2	1 149	2	15.1%	2	<b>8 533</b>	2	23.0%
SKODA	3	979	3	38.7%	3	<b>7 590</b>	3	21.2%
RENAULT	4	668	6	12.5%	4	<b>5 911</b>	5	40.9%
FORD	5	655	5	0.6%	5	<b>5 017</b>	4	15.2%
OPEL	6	505	4	-23.7%	6	<b>3 830</b>	6	45.1%
HYUNDAI	8	340	9	6.3%	7	<b>2 577</b>	7	27.3%
TOYOTA	9	280	8	-16.9%	8	<b>2 415</b>	8	20.5%
MERCEDES BENZ *)	7	380	10	26.3%	9	<b>2 381</b>	10	41.0%
FIAT	13	233	16	29.4%	10	<b>2 079</b>	9	14.9%
Rest		2 230		5.0%		<b>16 724</b>		26.6%
<b>TOTAL</b>		<b>11 541</b>		<b>23.8%</b>		<b>82 147</b>		<b>17.9%</b>



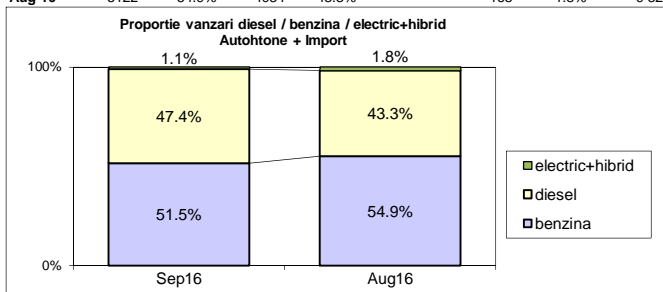
## Top livrari autoturisme - modele / Passenger car top - by model

MODEL	Septembrie		Variatie August		2016		Variatie 2015	
	pozitie	unitati	pozitie	procent	pozitie	unitati	pozitie	procent
DACIA LOGAN	1	1 982	1	57.8%	1	<b>11 297</b>	1	-2.0%
DACIA SANDERO	3	626	6	101.9%	2	<b>5 059</b>	3	13.1%
DACIA DUSTER	2	842	2	75.4%	3	<b>4 546</b>	2	-3.6%
SKODA OCTAVIA	4	439	8	84.5%	4	<b>3 223</b>	4	13.5%
RENAULT CLIO	11	194	13	21.3%	5	<b>2 353</b>	8	41.2%
DACIA LOGAN MCV	5	374	11	107.8%	6	<b>2 341</b>	5	2.3%
SKODA RAPID	6	297	7	24.8%	7	<b>2 202</b>	7	17.1%
VOLKSWAGEN POLO	9	238	20	67.6%	8	<b>1 986</b>	13	80.6%
FORD FOCUS	10	227	10	24.0%	9	<b>1 803</b>	9	11.2%
OPEL ASTRA	7	281	3	-22.8%	10	<b>1 771</b>	21	128.8%
Rest		6 041		4.6%		<b>45 566</b>		23.9%
<b>TOTAL</b>		<b>11 541</b>		<b>23.8%</b>		<b>82 147</b>		<b>17.9%</b>

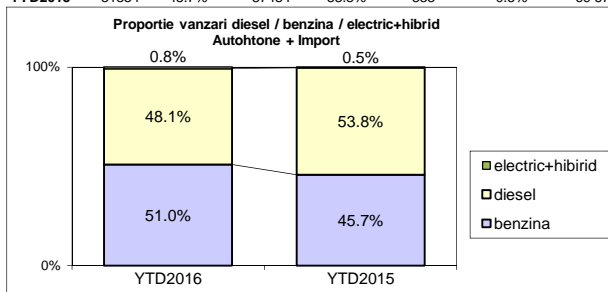


**Segmentare dupa tipul de combustibil / Segmentation by type of fuel**  
**Autohtone + Import / Domestic + Imported**

	benzina		diesel		electric+hibrid		total
Sep-16	5944	51.5%	5474	47.4%	123	1.1%	11 541
Aug-16	5122	54.9%	4034	43.3%	168	1.8%	9 324



	benzina		diesel		electric+hibrid		total
YTD2016	41905	51.0%	39549	48.1%	693	0.8%	82 147
YTD2015	31854	45.7%	37484	53.8%	333	0.5%	69 671


**Livrari autoturisme in functie de tipul de combustibil / Passenger car sales by fuel type**

Luna/An	2016		Pondere		2015		Variatie 16/15	
	diesel	benzina	diesel	benzina	diesel	benzina	diesel	benzina
January	3 036	2 036	59.4%	39.8%	3 022	1 456	0.5%	39.8%
February	3 429	2 963	53.4%	46.1%	3 430	2 335	0.0%	26.9%
March	4 668	3 693	55.5%	43.9%	4 504	3 107	3.6%	18.9%
April	4 446	3 527	55.3%	43.9%	4 432	3 204	0.3%	10.1%
May	4 543	3 301	57.5%	41.8%	4 671	5 243	-2.7%	-37.0%
June	5 052	7 450	40.2%	59.3%	5 010	5 048	0.8%	47.6%
July	4 867	7 869	37.9%	61.3%	4 212	4 338	15.6%	81.4%
August	4 034	5 122	43.3%	54.9%	3 925	3 298	2.8%	55.3%
September	5 474	5 944	47.4%	51.5%	4 278	3 825	28.0%	55.4%
October	-	-	-	-	4 895	5 112	-	-
November	-	-	-	-	5 072	4 576	-	-
December	-	-	-	-	5 179	3 657	-	-
<b>Total</b>	<b>39 549</b>	<b>41 905</b>	<b>48.1%</b>	<b>51.0%</b>	<b>37 484</b>	<b>31 854</b>	<b>5.5%</b>	<b>31.6%</b>

**Top Marci - Electrice (BEV,EREV,PHEV) si Hibrade (HEV)**

MARCA	BEV+EREV+PHEV			HEV		
	2016	2015	Var. %	2016	2015	Var. %
BMW	35	0	-	-	-	-
VOLKSWAGEN	10	5	100.0%	-	-	-
MERCEDES BENZ *)	9	3	200.0%	3	7	-57.1%
VOLVO	9	0	-	-	-	-
MITSUBISHI	6	5	20.0%	-	-	-
RENAULT	3	8	-62.5%	-	-	-
PORSCHE	2	2	0.0%	-	-	-
TOYOTA	-	-	-	480	222	116.2%
LEXUS	-	-	-	114	43	165.1%
LAND ROVER	-	-	-	14	17	-17.6%
FORD	-	-	-	3	0	-
Rest	4	11	-63.6%	1	10	-90.0%
<b>TOTAL</b>	<b>78</b>	<b>34</b>	<b>129.4%</b>	<b>615</b>	<b>299</b>	<b>105.7%</b>

\*) Estimari APIA / APIA Estimates

**Top 10 Autoturisme in functie de tipul de alimentare - marci / Top 10 passenger car sales by fuel type and make**
**Top 10 diesel - marci**

MARCA	Septembrie 2016	9 luni 2016	Pondere %	Variatie an precedent %	Pondere diesel/total
DACIA	1712	10049	25.4%	-5.7%	40.1%
SKODA	574	4562	11.5%	17.5%	60.1%
VOLKSWAGEN	566	4225	10.7%	-3.4%	49.5%
RENAULT	405	3464	8.8%	26.5%	58.6%
FORD	384	2969	7.5%	6.7%	59.2%
MERCEDES BENZ *)	290	1916	4.8%	33.1%	80.5%
BMW	211	1661	4.2%	33.2%	89.3%
AUDI	132	1258	3.2%	11.6%	69.6%
NISSAN	179	1166	2.9%	10.2%	65.7%
OPEL	112	1005	2.5%	-15.8%	26.2%
Rest	909	7274	18.4%	4.2%	39.6%
<b>TOTAL</b>	<b>5474</b>	<b>39549</b>	<b>100%</b>	<b>5.5%</b>	<b>48.1%</b>

\*) Estimari APIA / APIA Estimates

**Top 10 benzina - marci**

MARCA	Septembrie 2016	9 luni 2016	Pondere %	Variatie an precedent %	Pondere benzina/total
DACIA	2410	15041	35.9%	8.4%	59.9%
VOLKSWAGEN	579	4298	10.3%	67.8%	50.4%
SKODA	405	3028	7.2%	27.1%	39.9%
OPEL	393	2825	6.7%	95.5%	73.8%
RENAULT	263	2444	5.8%	68.6%	41.3%
FORD	270	2045	4.9%	30.2%	40.8%
HYUNDAI	237	1651	3.9%	22.6%	64.1%
SUZUKI	173	1472	3.5%	120.4%	90.4%
FIAT	173	1442	3.4%	43.9%	69.4%
TOYOTA	149	1410	3.4%	9.6%	58.4%
Rest	892	6249	14.9%	46.7%	35.8%
<b>TOTAL</b>	<b>5944</b>	<b>41905</b>	<b>100%</b>	<b>31.6%</b>	<b>51.0%</b>

\*) Estimari APIA / APIA Estimates

**Top 10 Autoturisme in functie de tipul de alimentare - modele / Top 10 passenger car sales by fuel type and model**
**Top 10 diesel - model**

MODEL	Septembrie 2016	9 luni 2016	Pondere %	Variatie an precedent %	Pondere diesel/total
DACIA DUSTER	656	3497	8.8%	-13.3%	76.9%
DACIA LOGAN	558	2716	6.9%	2.7%	24.0%
SKODA OCTAVIA	344	2478	6.3%	13.8%	76.9%
DACIA LOGAN MCV	221	1246	3.2%	-2.5%	53.2%
DACIA SANDERO	75	1228	3.1%	-15.3%	24.3%
RENAULT CLIO	123	1159	2.9%	29.6%	49.3%
SKODA RAPID	121	998	2.5%	-2.3%	45.3%
NISSAN QASHQAI	153	994	2.5%	13.5%	80.2%
VOLKSWAGEN PASSAT	118	984	2.5%	-11.8%	93.5%
VOLKSWAGEN TIGUAN	166	925	2.3%	83.2%	87.9%
Rest	2939	23324	59.0%	8.5%	48.8%
<b>TOTAL</b>	<b>5474</b>	<b>39549</b>	<b>100%</b>	<b>5.5%</b>	<b>48.1%</b>

\*) Estimari APIA / APIA Estimates

**Top 10 benzina - model**

MODEL	Septembrie 2016	9 luni 2016	Pondere %	Variatie an precedent %	Pondere benzina/total
DACIA LOGAN	1424	8581	20.5%	-3.5%	76.0%
DACIA SANDERO	551	3831	9.1%	26.7%	75.7%
VOLKSWAGEN POLO	232	1895	4.5%	136.9%	95.4%
OPEL ASTRA	229	1378	3.3%	167.1%	77.8%
SKODA RAPID	176	1204	2.9%	40.2%	54.7%
RENAULT CLIO	71	1194	2.8%	54.7%	50.7%
SUZUKI VITARA	117	1118	2.7%	271.4%	88.6%
DACIA LOGAN MCV	153	1095	2.6%	8.3%	46.8%
DACIA DUSTER	186	1049	2.5%	53.8%	23.1%
VOLKSWAGEN GOLF	93	915	2.2%	44.8%	51.9%
Rest	2712	19645	46.9%	36.7%	41.3%
<b>TOTAL</b>	<b>5944</b>	<b>41905</b>	<b>100%</b>	<b>31.6%</b>	<b>51.0%</b>

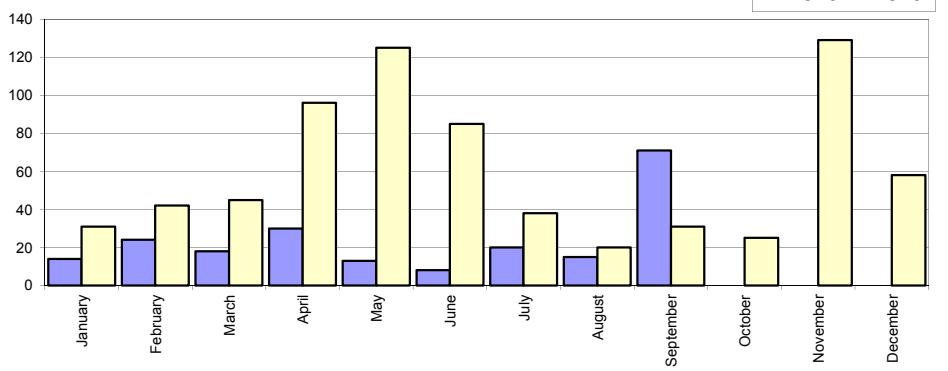
\*) Estimari APIA / APIA Estimates

## Livrari comerciale usoare + minibus autohtone / Domestic LCV + minibus sales

Luna/An	2016	2015	Variatie
January	14	31	-54.8%
February	24	42	-42.9%
March	18	45	-60.0%
April	30	96	-68.8%
May	13	125	-89.6%
June	8	85	-90.6%
July	20	38	-47.4%
August	15	20	-25.0%
September	71	31	129.0%
October	-	25	-
November	-	129	-
December	-	58	-
<b>Total</b>	<b>213</b>	<b>513</b>	<b>-58.5%</b>

725

Livrari autohtone (buc)

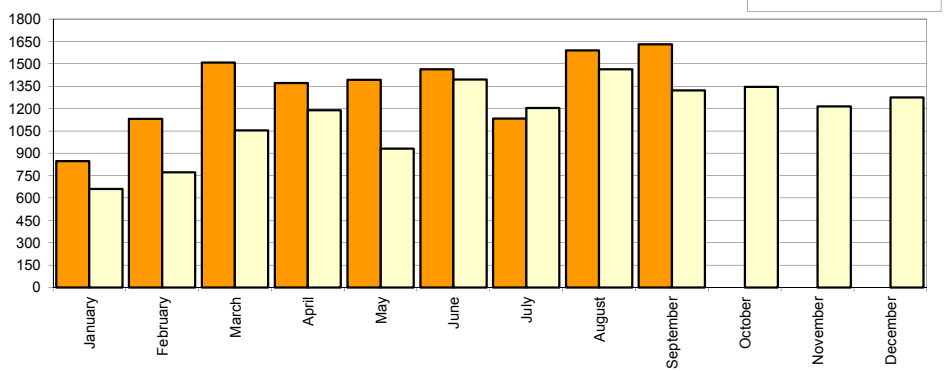


## Livrari comerciale usoare + minibus import / Imported LCV + minibus sales

Luna/An	2016	2015	Variatie
January	848	660	28.5%
February	1 131	772	46.5%
March	1 508	1 053	43.2%
April	1 370	1 189	15.2%
May	1 393	931	49.6%
June	1 464	1 394	5.0%
July	1 133	1 204	-5.9%
August	1 590	1 463	8.7%
September	1 630	1 322	23.3%
October	-	1 346	-
November	-	1 214	-
December	-	1 274	-
<b>Total</b>	<b>12 067</b>	<b>9 988</b>	<b>20.8%</b>

13 822

Livrari import (buc)

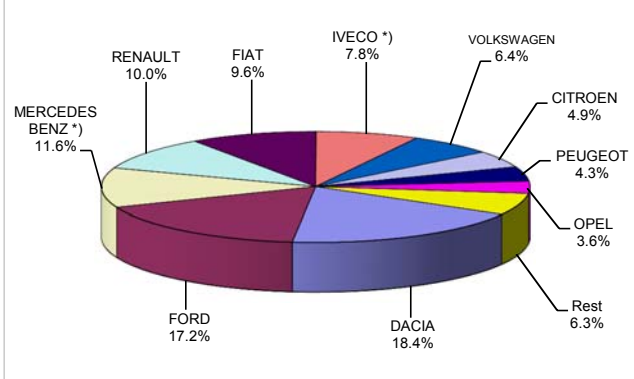


## Livrari comerciale &lt;3.5t si minibus - marci / LCV + minibus sales by make

MARCA	Septembrie		Variatie August		2016		Variatie2015	
	pozitie	unitati	pozitie	procent	pozitie	unitati	pozitie	procent
DACIA	2	274	1	-24.1%	1	2260	1	18.1%
FORD	1	282	2	-13.0%	2	2107	3	38.1%
MERCEDES BENZ *)	3	229	3	32.4%	3	1422	4	16.8%
RENAULT	6	149	4	2.1%	4	1222	6	42.9%
FIAT	4	174	7	74.0%	5	1179	5	25.0%
IVECO *)	5	157	5	37.7%	6	957	8	84.0%
VOLKSWAGEN	7	109	6	-3.5%	7	788	7	35.4%
CITROEN	9	85	8	3.7%	8	606	10	40.0%
PEUGEOT	10	70	9	22.8%	9	525	9	19.6%
OPEL	8	91	10	78.4%	10	436	2	-73.8%
Rest		81		-3.6%		778		90.2%
<b>TOTAL</b>		<b>1701</b>		<b>6.0%</b>		<b>12280</b>		<b>16.9%</b>

\*) Estimari APIA / APIA Estimates

Vanzari com &lt;3.5t si minibus - marci - 2016



## Livrari comerciale &lt;3.5t si minibus - modele / LCV + minibus sales by model

MODEL	Septembrie		Variatie August		2016		Variatie2015	
	pozitie	unitati	pozitie	procent	pozitie	unitati	pozitie	procent
DACIA DOKKER VAN	1	203	1	-41.3%	1	2047	2	46.1%
FORD TRANSIT	2	165	2	-19.5%	2	1178	3	39.7%
FIAT DUCATO	4	144	5	71.4%	3	975	4	29.3%
IVECO *) DAILY	3	155	3	36.0%	4	941	7	81.0%
RENAULT MASTER	6	98	4	4.3%	5	696	6	30.3%
MERCEDES BENZ *) SPRINTER	5	119	8	75.0%	6	599	5	-12.0%
CITROEN JUMPER	7	77	6	0.0%	7	544	9	45.8%
MERCEDES BENZ *) SPRINTER BUS	8	69	7	-6.8%	8	507	12	117.6%
PEUGEOT BOXER	10	62	10	17.0%	9	452	10	23.2%
FORD TRANSIT CUSTOM	14	32	9	-42.9%	10	299	13	66.1%
Rest		577		32.9%		4042		-12.4%
<b>TOTAL</b>		<b>1701</b>		<b>6.0%</b>		<b>12280</b>		<b>16.9%</b>

\*) Estimari APIA / APIA Estimates

Vanzari com &lt;3.5t si minibus - modele - 2016

