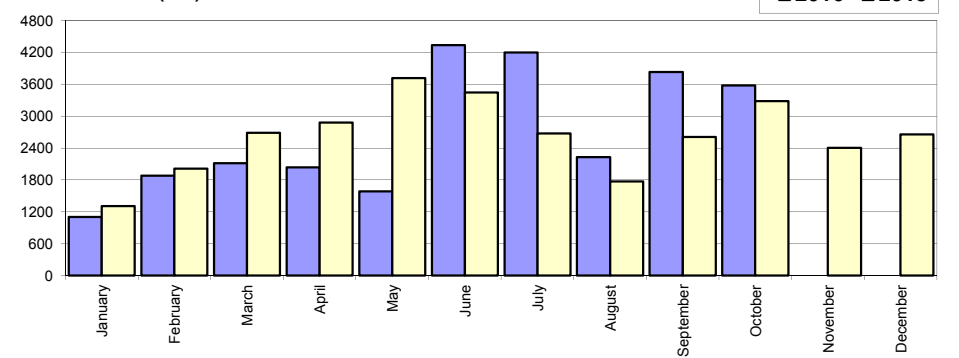


## Livrari autoturisme autohtone / Domestic passenger car sales

Luna/An	2016	2015	Variatie
January	1 103	1 310	-15.8%
February	1 878	2 012	-6.7%
March	2 116	2 689	-21.3%
April	2 035	2 878	-29.3%
May	1 586	3 716	-57.3%
June	4 336	3 448	25.8%
July	4 197	2 673	57.0%
August	2 231	1 772	25.9%
September	3 831	2 612	46.7%
October	3 577	3 283	9.0%
November	-	2 404	-
December	-	2 660	-
<b>Total</b>	<b>26 890</b>	<b>26 393</b>	<b>1.9%</b>

31 457

Livrari autohtone (buc)

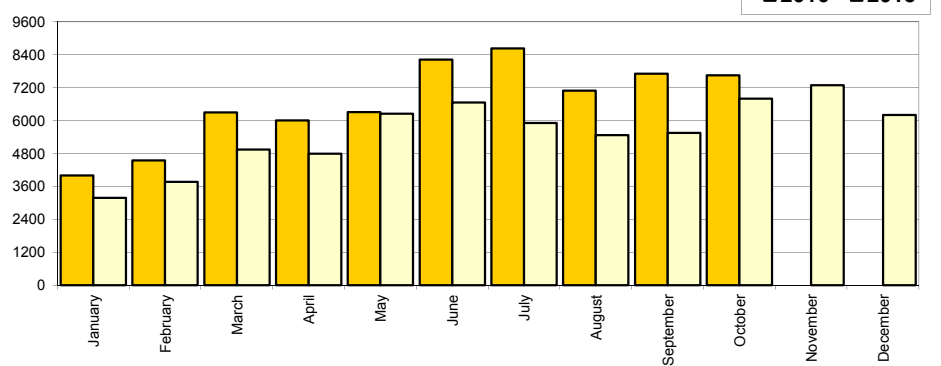


## Livrari autoturisme import / Imported passenger car sales

Luna/An	2016	2015	Variatie
January	4 008	3 185	25.8%
February	4 549	3 775	20.5%
March	6 297	4 942	27.4%
April	6 007	4 791	25.4%
May	6 310	6 257	0.8%
June	8 226	6 664	23.4%
July	8 634	5 918	45.9%
August	7 093	5 478	29.5%
September	7 710	5 551	38.9%
October	7 656	6 803	12.5%
November	-	7 296	-
December	-	6 208	-
<b>Total</b>	<b>66 490</b>	<b>53 364</b>	<b>24.6%</b>

66 868

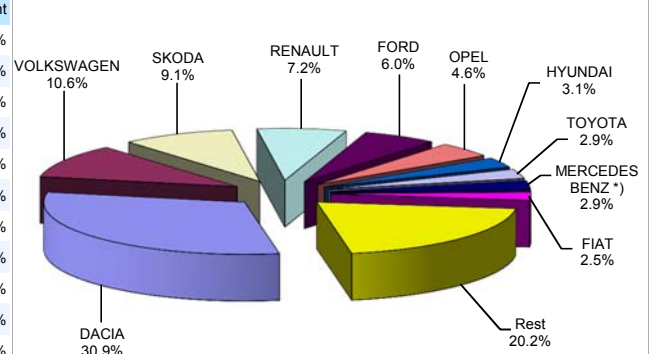
Livrari import (buc)



## Top livrari autoturisme - marci / Passenger car top - by make

MARCA	Octombrie		Variatie Septembrie		2016		Variatie 2015	
	pozitie	unitati	pozitie	procent	pozitie	unitati	pozitie	procent
DACIA	1	3747	1	-9.1%	1	<b>28837</b>	1	3.0%
VOLKSWAGEN	2	1351	2	17.6%	2	<b>9884</b>	2	24.2%
SKODA	3	891	3	-9.0%	3	<b>8481</b>	3	17.1%
RENAULT	4	809	4	21.1%	4	<b>6720</b>	5	39.1%
FORD	5	583	5	-11.0%	5	<b>5600</b>	4	12.2%
OPEL	6	495	6	-2.0%	6	<b>4325</b>	6	46.5%
HYUNDAI	8	312	8	-8.2%	7	<b>2889</b>	8	23.9%
TOYOTA	7	325	9	16.1%	8	<b>2740</b>	7	16.2%
MERCEDES BENZ *)	9	299	7	-21.3%	9	<b>2680</b>	10	39.4%
FIAT	10	265	13	13.7%	10	<b>2344</b>	9	15.5%
Rest		2156		-3.3%		<b>18880</b>		24.6%
<b>TOTAL</b>		<b>11233</b>		<b>-2.7%</b>		<b>93380</b>		<b>17.1%</b>

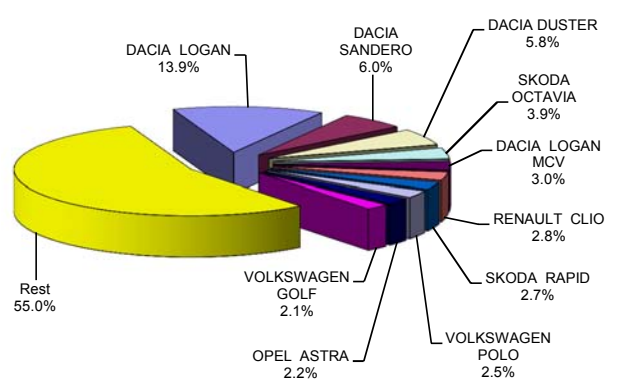
Autoturisme - marci - 2016



## Top livrari autoturisme - modele / Passenger car top - by model

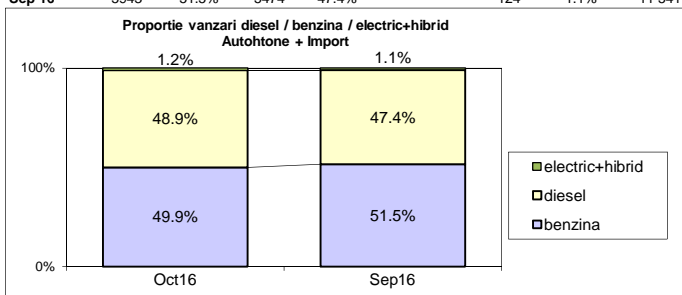
MODEL	Octombrie		Variatie Septembrie		2016		Variatie 2015	
	pozitie	unitati	pozitie	procent	pozitie	unitati	pozitie	procent
DACIA LOGAN	1	1648	1	-16.9%	1	<b>12945</b>	1	-3.2%
DACIA SANDERO	3	571	3	-8.8%	2	<b>5630</b>	3	14.3%
DACIA DUSTER	2	867	2	3.0%	3	<b>5413</b>	2	0.9%
SKODA OCTAVIA	5	405	4	-7.7%	4	<b>3628</b>	4	10.0%
DACIA LOGAN MCV	4	491	5	31.3%	5	<b>2832</b>	5	8.4%
RENAULT CLIO	7	303	11	56.2%	6	<b>2656</b>	8	33.0%
SKODA RAPID	9	289	6	-2.7%	7	<b>2491</b>	7	15.2%
VOLKSWAGEN POLO	6	383	9	60.9%	8	<b>2369</b>	11	50.4%
OPEL ASTRA	8	290	7	3.2%	9	<b>2061</b>	21	141.6%
VOLKSWAGEN GOLF	10	233	12	23.9%	10	<b>1995</b>	6	-8.2%
Rest		5753		-5.4%		<b>51360</b>		24.0%
<b>TOTAL</b>		<b>11233</b>		<b>-2.7%</b>		<b>93380</b>		<b>17.1%</b>

Autoturisme - modele - 2016

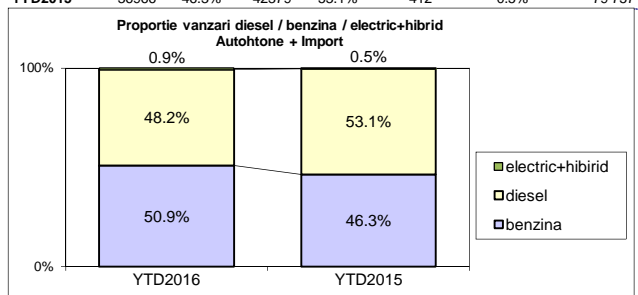


**Segmentare dupa tipul de combustibil / Segmentation by type of fuel**  
**Autohtone + Import / Domestic + Imported**

	benzina		diesel		electric+hibrid		total
Oct-16	5609	49.9%	5494	48.9%	130	1.2%	11 233
Sep-16	5943	51.5%	5474	47.4%	124	1.1%	11 541



	benzina		diesel		electric+hibrid		total
YTD2016	47503	50.9%	45043	48.2%	834	0.9%	93 380
YTD2015	36966	46.3%	42379	53.1%	412	0.5%	79 757


**Livrari autoturisme in functie de tipul de combustibil / Passenger car sales by fuel type**

Luna/An	2016		Pondere		2015		Variatie 16/15	
	diesel	benzina	diesel	benzina	diesel	benzina	diesel	benzina
January	3 036	2 036	59.4%	39.8%	3 022	1 456	0.5%	39.8%
February	3 429	2 963	53.4%	46.1%	3 430	2 335	0.0%	26.9%
March	4 668	3 693	55.5%	43.9%	4 504	3 107	3.6%	18.9%
April	4 446	3 527	55.3%	43.9%	4 432	3 204	0.3%	10.1%
May	4 543	3 296	57.5%	41.7%	4 671	5 243	-2.7%	-37.1%
June	5 052	7 450	40.2%	59.3%	5 010	5 048	0.8%	47.6%
July	4 867	7 865	37.9%	61.3%	4 212	4 338	15.6%	81.3%
August	4 034	5 121	43.3%	54.9%	3 925	3 298	2.8%	55.3%
September	5 474	5 943	47.4%	51.5%	4 278	3 825	28.0%	55.4%
October	5 494	5 609	48.9%	49.9%	4 895	5 112	12.2%	9.7%
November	-	-	-	-	5 072	4 576	-	-
December	-	-	-	-	5 179	3 657	-	-
<b>Total</b>	<b>45 043</b>	<b>47 503</b>	<b>48.2%</b>	<b>50.9%</b>	<b>42 379</b>	<b>36 966</b>	<b>6.3%</b>	<b>28.5%</b>

**Top Marci - Electrice (BEV,EREV,PHEV) si Hibrade (HEV)**

MARCA	BEV+EREV+PHEV			HEV	
	2016	2015	Var. %	2016	2015
BMW	38	0	-	0	0
MERCEDES BENZ *)	26	4	550.0%	3	7
VOLKSWAGEN	13	5	160.0%	0	0
VOLVO	9	0	-	0	0
MITSUBISHI	7	7	0.0%	0	0
RENAULT	3	9	-66.7%	0	0
PORSCHE	2	2	0.0%	0	0
AUDI	1	0	-	0	0
TOYOTA	0	0	-	578	282
LEXUS	0	0	-	127	53
LAND ROVER	0	0	-	17	19
Altele	5	13	-	5	11
<b>TOTAL</b>	<b>104</b>	<b>40</b>	<b>160.0%</b>	<b>730</b>	<b>372</b>

\*) Estimari APIA / APIA Estimates

**Top 10 Autoturisme in functie de tipul de alimentare - marci / Top 10 passenger car sales by fuel type and make**
**Top 10 diesel - marci**

MARCA	Octombrie 2016	10 luni 2016	Pondere %	Variatie an precedent %	Pondere diesel/total
DACIA	1752	11801	26.2%	-2.1%	40.9%
SKODA	535	5097	11.3%	13.5%	60.1%
VOLKSWAGEN	691	4916	10.9%	2.7%	49.7%
RENAULT	490	3954	8.8%	28.0%	58.8%
FORD	392	3361	7.5%	6.1%	60.0%
MERCEDES BENZ *)	247	2163	4.8%	30.8%	80.7%
BMW	187	1848	4.1%	35.2%	89.4%
AUDI	182	1440	3.2%	15.7%	70.8%
NISSAN	158	1324	2.9%	10.6%	65.2%
OPEL	56	1061	2.4%	-20.5%	24.5%
Rest	804	8078	17.9%	1.0%	-
<b>TOTAL</b>	<b>5494</b>	<b>45043</b>	<b>100%</b>	<b>6.3%</b>	<b>48.2%</b>

\*) Estimari APIA / APIA Estimates

**Top 10 benzina - marci**

MARCA	Octombrie 2016	10 luni 2016	Pondere %	Variatie an precedent %	Pondere benzina/total
DACIA	1995	17036	35.9%	6.9%	59.1%
VOLKSWAGEN	657	4955	10.4%	56.4%	50.1%
SKODA	356	3384	7.1%	22.9%	39.9%
OPEL	439	3264	6.9%	101.7%	75.5%
RENAULT	319	2763	5.8%	59.3%	41.1%
FORD	190	2235	4.7%	22.7%	39.9%
HYUNDAI	231	1882	4.0%	24.2%	65.1%
FIAT	258	1700	3.6%	49.5%	72.5%
SUZUKI	165	1637	3.4%	103.1%	90.6%
TOYOTA	199	1609	3.4%	7.0%	58.7%
Rest	800	7038	14.8%	41.6%	-
<b>TOTAL</b>	<b>5609</b>	<b>47503</b>	<b>100%</b>	<b>28.5%</b>	<b>50.9%</b>

\*) Estimari APIA / APIA Estimates

**Top 10 Autoturisme in functie de tipul de alimentare - modele / Top 10 passenger car sales by fuel type and model**
**Top 10 diesel - model**

MODEL	Octombrie 2016	10 luni 2016	Pondere %	Variatie an precedent %	Pondere diesel/total
DACIA DUSTER	638	4135	9.2%	-9.0%	76.4%
DACIA LOGAN	538	3254	7.2%	8.8%	25.1%
SKODA OCTAVIA	298	2776	6.2%	9.9%	76.5%
DACIA LOGAN MCV	247	1493	3.3%	3.3%	52.7%
DACIA SANDERO	244	1472	3.3%	-12.0%	26.1%
RENAULT CLIO	150	1309	2.9%	26.2%	49.3%
VOLKSWAGEN PASSAT	173	1157	2.6%	-7.0%	94.1%
SKODA RAPID	149	1147	2.5%	-1.5%	46.0%
NISSAN QASHQAI	118	1112	2.5%	14.9%	79.3%
VOLKSWAGEN TIGUAN	174	1099	2.4%	97.3%	87.8%
Rest	2765	26089	57.9%	7.7%	-
<b>TOTAL</b>	<b>5494</b>	<b>45043</b>	<b>100%</b>	<b>6.3%</b>	<b>48.2%</b>

\*) Estimari APIA / APIA Estimates

**Top 10 benzina - model**

MODEL	Octombrie 2016	10 luni 2016	Pondere %	Variatie an precedent %	Pondere benzina/total
DACIA LOGAN	1110	9691	20.4%	-6.7%	74.9%
DACIA SANDERO	327	4158	8.8%	27.8%	73.9%
VOLKSWAGEN POLO	328	2223	4.7%	77.8%	93.8%
OPEL ASTRA	264	1642	3.5%	185.1%	79.7%
RENAULT CLIO	153	1347	2.8%	40.3%	50.7%
SKODA RAPID	140	1344	2.8%	34.7%	54.0%
DACIA LOGAN MCV	244	1339	2.8%	14.7%	47.3%
DACIA DUSTER	229	1278	2.7%	55.9%	23.6%
SUZUKI VITARA	124	1242	2.6%	202.9%	89.0%
VOLKSWAGEN GOLF	87	1002	2.1%	43.6%	50.2%
Rest	2603	22237	46.8%	35.2%	-
<b>TOTAL</b>	<b>5609</b>	<b>47503</b>	<b>100%</b>	<b>28.5%</b>	<b>50.9%</b>

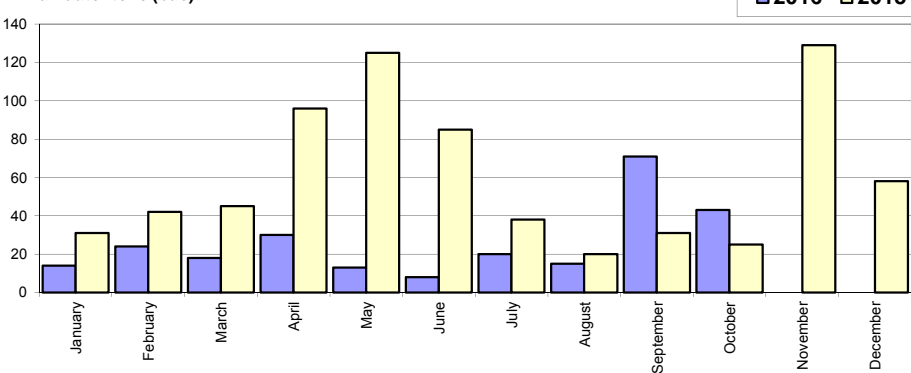
\*) Estimari APIA / APIA Estimates

**Livrari comerciale usoare + minibus autohtone / Domestic LCV + minibus sales**

Luna/An	2016	2015	Variatie
January	14	31	-54.8%
February	24	42	-42.9%
March	18	45	-60.0%
April	30	96	-68.8%
May	13	125	-89.6%
June	8	85	-90.6%
July	20	38	-47.4%
August	15	20	-25.0%
September	71	31	129.0%
October	43	25	72.0%
November	-	129	-
December	-	58	-
<b>Total</b>	<b>256</b>	<b>538</b>	<b>-52.4%</b>

725

Livrari autohtone (buc)

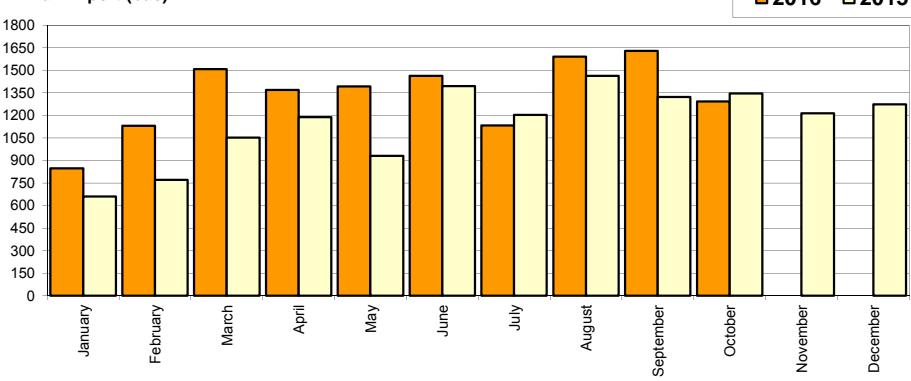


**Livrari comerciale usoare + minibus import / Imported LCV + minibus sales**

Luna/An	2016	2015	Variatie
January	848	660	28.5%
February	1 131	772	46.5%
March	1 508	1 053	43.2%
April	1 370	1 189	15.2%
May	1 393	931	49.6%
June	1 464	1 394	5.0%
July	1 133	1 204	-5.9%
August	1 590	1 463	8.7%
September	1 630	1 322	23.3%
October	1 293	1 346	-3.9%
November	-	1 214	-
December	-	1 274	-
<b>Total</b>	<b>13 360</b>	<b>11 334</b>	<b>17.9%</b>

13 822

Livrari import (buc)

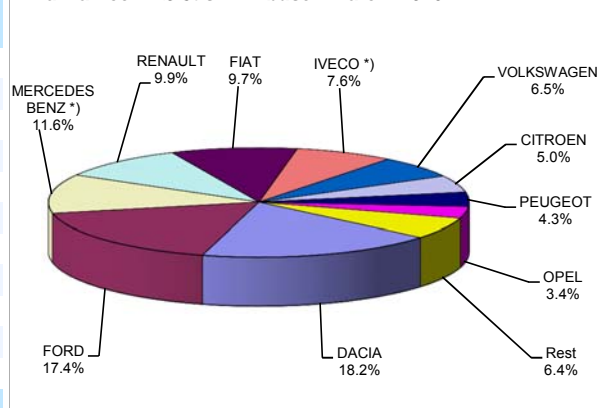


**Livrari comerciale <3.5t si minibus - marci / LCV + minibus sales by make**

MARCA	Octombrie		Variatie Septembrie		2016		Variatie 2015	
	pozitie	unitati	pozitie	procent	pozitie	unitati	pozitie	procent
DACIA	2	219	2	-20.1%	1	<b>2479</b>	1	8.7%
FORD	1	259	1	-8.2%	2	<b>2366</b>	3	40.4%
MERCEDES BENZ *)	3	156	3	-31.9%	3	<b>1578</b>	4	12.2%
RENAULT	5	130	6	-12.8%	4	<b>1352</b>	6	38.8%
FIAT	4	143	4	-17.8%	5	<b>1322</b>	5	17.7%
IVECO *)	7	78	5	-50.3%	6	<b>1035</b>	8	72.8%
VOLKSWAGEN	6	102	7	-6.4%	7	<b>890</b>	7	39.9%
CITROEN	8	76	9	-10.6%	8	<b>682</b>	10	37.8%
PEUGEOT	9	55	10	-21.4%	9	<b>580</b>	9	13.7%
OPEL	12	30	8	-67.0%	10	<b>466</b>	2	-72.6%
Rest		88		8.6%		<b>866</b>		86.6%
<b>TOTAL</b>		<b>1336</b>		<b>-21.5%</b>		<b>13616</b>		<b>14.7%</b>

\*) Estimari APIA / APIA Estimates

Vanzari com <3.5t si minibus - marci - 2016



**Livrari comerciale <3.5t si minibus - modele / LCV + minibus sales by model**

MODEL	Octombrie		Variatie Septembrie		2016		Variatie 2015	
	pozitie	unitati	pozitie	procent	pozitie	unitati	pozitie	procent
DACIA DOKKER VAN	1	176	1	-13.3%	1	<b>2223</b>	1	27.6%
FORD TRANSIT	2	151	2	-8.5%	2	<b>1329</b>	3	44.9%
FIAT DUCATO	3	101	4	-29.9%	3	<b>1076</b>	4	20.9%
IVECO *) DAILY	4	77	3	-50.3%	4	<b>1018</b>	6	70.5%
RENAULT MASTER	6	67	6	-31.6%	5	<b>763</b>	7	28.0%
MERCEDES BENZ *) SPRINTER	7	63	5	-47.1%	6	<b>662</b>	5	-13.5%
CITROEN JUMPER	5	72	7	-6.5%	7	<b>616</b>	10	43.6%
MERCEDES BENZ *) SPRINTER BUS	8	61	8	-11.6%	8	<b>568</b>	11	87.5%
PEUGEOT BOXER	9	48	10	-22.6%	9	<b>500</b>	9	15.5%
FORD TRANSIT CUSTOM	22	18	14	-43.8%	10	<b>317</b>	13	56.9%
Rest		502		-13.0%		<b>4544</b>		-9.1%
<b>TOTAL</b>		<b>1336</b>		<b>-21.5%</b>		<b>13616</b>		<b>14.7%</b>

\*) Estimari APIA / APIA Estimates

Vanzari com <3.5t si minibus - modele - 2016

