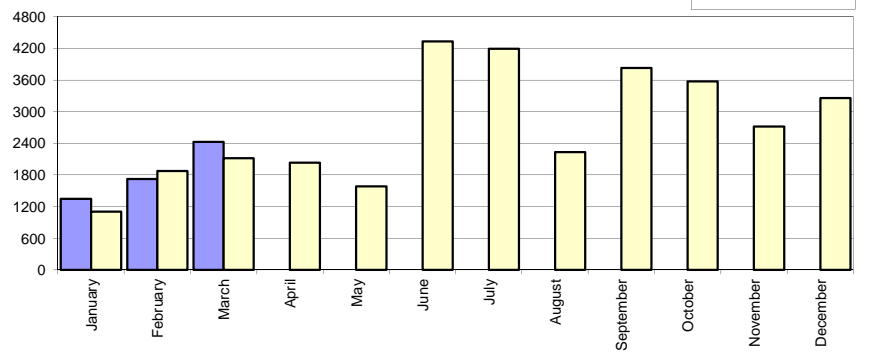


Livrari autoturisme autohtone / Domestic passenger car sales

Luna/An	2017	2016	Variatie
January	1 345	1 103	21.9%
February	1 722	1 878	-8.3%
March	2 425	2 116	14.6%
April	-	2 035	-
May	-	1 586	-
June	-	4 336	-
July	-	4 197	-
August	-	2 231	-
September	-	3 831	-
October	-	3 577	-
November	-	2 722	-
December	-	3 262	-
Total	5 492	5 097	7.7%

32 874

Livrari autohtone (buc)

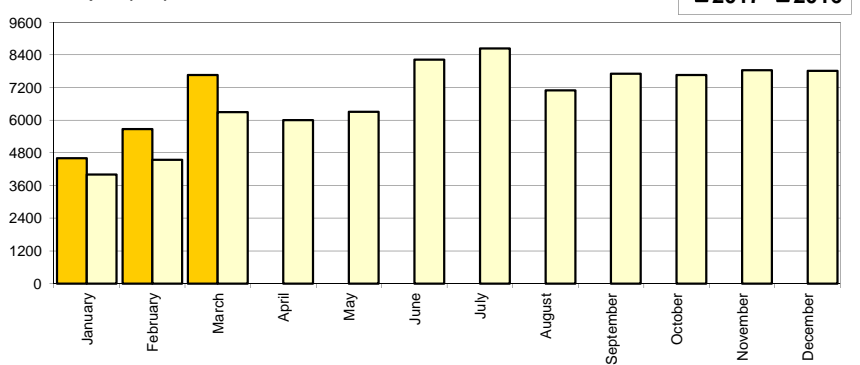


Livrari autoturisme import / Imported passenger car sales

Luna/An	2017	2016	Variatie
January	4 598	4 008	14.7%
February	5 674	4 549	24.7%
March	7 662	6 297	21.7%
April	-	6 007	-
May	-	6 309	-
June	-	8 226	-
July	-	8 634	-
August	-	7 093	-
September	-	7 710	-
October	-	7 656	-
November	-	7 835	-
December	-	7 806	-
Total	17 934	14 854	20.7%

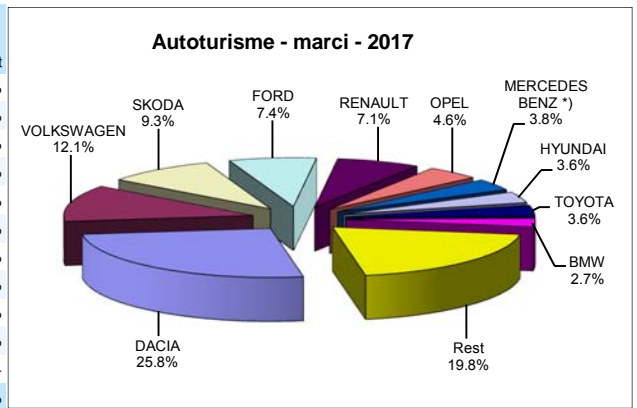
82 130

Livrari import (buc)



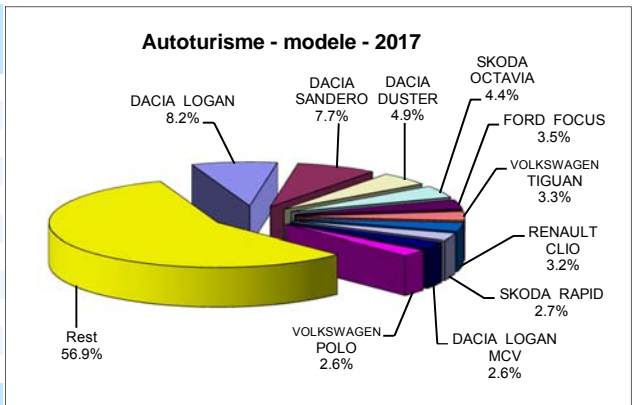
Top livrari autoturisme - marci / Passenger car top - by make

MARCA	Martie		Februarie		2017		Variatie2016	
	pozitie	unitati	pozitie	procent	pozitie	unitati	pozitie	procent
DACIA	1	2597	1	32.3%	1	6051	1	9.7%
VOLKSWAGEN	2	1070	2	24.4%	2	2846	2	26.8%
SKODA	4	810	3	14.7%	3	2178	3	3.9%
FORD	3	827	5	97.4%	4	1744	4	31.4%
RENAULT	5	744	4	35.8%	5	1673	5	36.4%
OPEL	6	501	8	70.4%	6	1073	6	54.4%
MERCEDES BENZ *)	10	319	6	-18.2%	7	893	7	32.3%
HYUNDAI	7	396	7	32.9%	8	852	9	46.9%
TOYOTA	9	380	9	44.5%	9	836	11	46.9%
BMW	8	382	10	113.4%	10	638	8	9.3%
Rest		2061		39.6%		4642		-
TOTAL		10087		36.4%		23426		17.4%



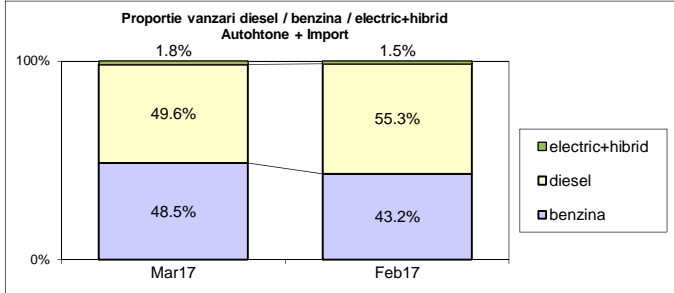
Top livrari autoturisme - modele / Passenger car top - by model

MODEL	Martie		Februarie		2017		Variatie2016	
	pozitie	unitati	pozitie	procent	pozitie	unitati	pozitie	procent
DACIA LOGAN	1	934	1	45.3%	1	1917	1	-15.8%
DACIA SANDERO	2	787	2	23.2%	2	1810	2	62.0%
DACIA DUSTER	3	481	6	86.4%	3	1140	3	7.7%
SKODA OCTAVIA	5	346	3	-16.4%	4	1035	4	9.3%
FORD FOCUS	4	454	17	263.2%	5	816	9	66.9%
VOLKSWAGEN TIGUAN	7	255	5	-4.1%	6	776	33	435.2%
RENAULT CLIO	6	328	4	21.9%	7	738	8	41.4%
SKODA RAPID	10	220	10	26.4%	8	631	7	16.0%
DACIA LOGAN MCV	9	220	8	20.9%	9	620	6	1.1%
VOLKSWAGEN POLO	11	219	7	11.7%	10	613	5	-1.1%
Rest		5843		38.1%		13330		-
TOTAL		10087		36.4%		23426		17.4%

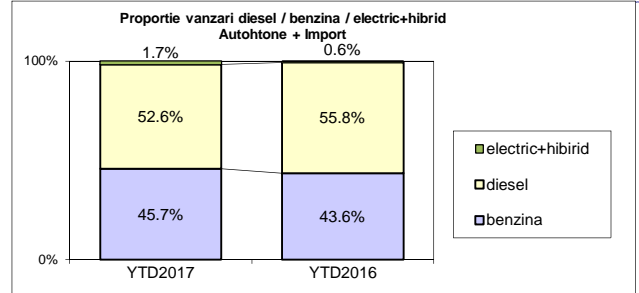


Segmentare dupa tipul de combustibil / Segmentation by type of fuel
Autohtone + Import / Domestic + Imported

	benzina		diesel		electric+hibrid		total
Mar-17	4896	48.5%	5008	49.6%	183	1.8%	10 087
Feb-17	3193	43.2%	4092	55.3%	111	1.5%	7 396



	benzina		diesel		electric+hibrid		total
YTD2017	10707	45.7%	12312	52.6%	407	1.7%	23 426
YTD2016	8692	43.6%	11133	55.8%	126	0.6%	19 951


Livrari autoturisme in functie de tipul de combustibil / Passenger car sales by fuel type

Luna/An	2017		Pondere		2016		Variatie 17/16	
	diesel	benzina	diesel	benzina	diesel	benzina	diesel	benzina
January	3 212	2 618	54.0%	44.1%	3 036	2 036	5.8%	28.6%
February	4 092	3 193	55.3%	43.2%	3 429	2 963	19.3%	7.8%
March	5 008	4 896	49.6%	48.5%	4 668	3 693	7.3%	32.6%
April	-	-	-	-	4 447	3 526	-	-
May	-	-	-	-	4 543	3 296	-	-
June	-	-	-	-	5 054	7 448	-	-
July	-	-	-	-	4 867	7 865	-	-
August	-	-	-	-	4 034	5 120	-	-
September	-	-	-	-	5 474	5 942	-	-
October	-	-	-	-	5 494	5 609	-	-
November	-	-	-	-	5 740	4 609	-	-
December	-	-	-	-	5 963	4 965	-	-
Total	12 312	10 707	52.6%	45.7%	11 133	8 692	10.6%	23.2%

Top Marci - Electrice (BEV,EREV,PHEV) si Hibrade (HEV)

MARCA	BEV+EREV+PHEV			HEV		
	2017	2016	Var. %	2017	2016	Var. %
BMW	14	4	250.0%	-	-	-
MERCEDES BENZ *)	8	0	-	1	1	0.0%
AUDI	6	0	-	-	-	-
VOLKSWAGEN	4	2	100.0%	-	-	-
VOLVO	3	2	50.0%	-	-	-
PORSCHE	2	0	-	-	-	-
TOYOTA	-	-	-	328	90	264.4%
LEXUS	-	-	-	32	18	77.8%
KIA	-	-	-	3	0	-
FORD	-	-	-	1	1	0.0%
LAND ROVER	-	-	-	1	6	-83.3%
Altele	4	2	-	-	-	-
TOTAL	41	10	310.0%	366	116	215.5%

*) Estimari APIA / APIA Estimates

Top 10 Autoturisme in functie de tipul de alimentare - marci / Top 10 passenger car sales by fuel type and make
Top 10 diesel - marci

MARCA	Martie 2017	3 luni 2017	Pondere %	Variatie an precedent %	Pondere diesel/total
DACIA	1236	2947	23.9%	13.5%	48.7%
VOLKSWAGEN	582	1594	12.9%	33.6%	56.0%
SKODA	508	1491	12.1%	9.9%	68.5%
FORD	345	1013	8.2%	14.7%	58.1%
RENAULT	357	856	7.0%	8.2%	51.2%
MERCEDES BENZ *)	251	747	6.1%	31.3%	83.7%
BMW	347	579	4.7%	6.2%	90.8%
AUDI	132	349	2.8%	8.0%	81.9%
NISSAN	188	349	2.8%	17.9%	68.2%
PEUGEOT	140	322	2.6%	25.8%	67.9%
Rest	922	2065	16.8%	-11.1%	-
TOTAL	5008	12312	100%	10.6%	52.6%

*) Estimari APIA / APIA Estimates

Top 10 benzina - marci

MARCA	Martie 2017	3 luni 2017	Pondere %	Variatie an precedent %	Pondere benzina/total
DACIA	1361	3104	29.0%	6.4%	51.3%
VOLKSWAGEN	487	1248	11.7%	19.0%	43.9%
OPEL	376	825	7.7%	85.0%	76.9%
RENAULT	387	817	7.6%	87.8%	48.8%
FORD	482	730	6.8%	64.8%	41.9%
SKODA	302	687	6.4%	-7.2%	31.5%
HYUNDAI	288	557	5.2%	107.1%	65.4%
TOYOTA	210	433	4.0%	42.9%	51.8%
SUZUKI	138	350	3.3%	34.1%	90.7%
FIAT	192	325	3.0%	-13.3%	82.7%
Rest	673	1631	15.2%	12.3%	-
TOTAL	4896	10707	100%	23.2%	45.7%

*) Estimari APIA / APIA Estimates

Top 10 Autoturisme in functie de tipul de alimentare - modele / Top 10 passenger car sales by fuel type and model
Top 10 diesel - model

MODEL	Martie 2017	3 luni 2017	Pondere %	Variatie an precedent %	Pondere diesel/total
DACIA DUSTER	395	900	7.3%	11.7%	78.9%
SKODA OCTAVIA	275	867	7.0%	9.9%	83.8%
DACIA LOGAN	372	843	6.8%	13.6%	44.0%
VOLKSWAGEN TIGUAN	226	683	5.5%	478.8%	88.0%
DACIA SANDERO	229	503	4.1%	45.4%	27.8%
FORD FOCUS	100	353	2.9%	14.6%	43.3%
SKODA RAPID	105	352	2.9%	17.7%	55.8%
DACIA LOGAN MCV	120	332	2.7%	-13.8%	53.5%
RENAULT MEGANE	106	301	2.4%	168.8%	63.9%
DACIA DOKKER	99	286	2.3%	33.0%	65.0%
Rest	2981	6892	56.0%	-1.7%	-
TOTAL	5008	12312	100%	10.6%	52.6%

*) Estimari APIA / APIA Estimates

Top 10 benzina - model

MODEL	Martie 2017	3 luni 2017	Pondere %	Variatie an precedent %	Pondere benzina/total
DACIA SANDERO	558	1307	12.2%	69.5%	72.2%
DACIA LOGAN	562	1074	10.0%	-30.0%	56.0%
VOLKSWAGEN POLO	204	577	5.4%	-4.0%	94.1%
FORD FOCUS	354	463	4.3%	155.8%	56.7%
RENAULT CLIO	203	455	4.2%	113.6%	61.7%
OPEL ASTRA	166	371	3.5%	243.5%	73.2%
DACIA LOGAN MCV	100	288	2.7%	26.3%	46.5%
SKODA RAPID	115	279	2.6%	13.9%	44.2%
SUZUKI VITARA	107	266	2.5%	48.6%	89.9%
DACIA DUSTER	86	240	2.2%	-5.1%	21.1%
Rest	2441	5387	50.3%	23.0%	-
TOTAL	4896	10707	100%	23.2%	45.7%

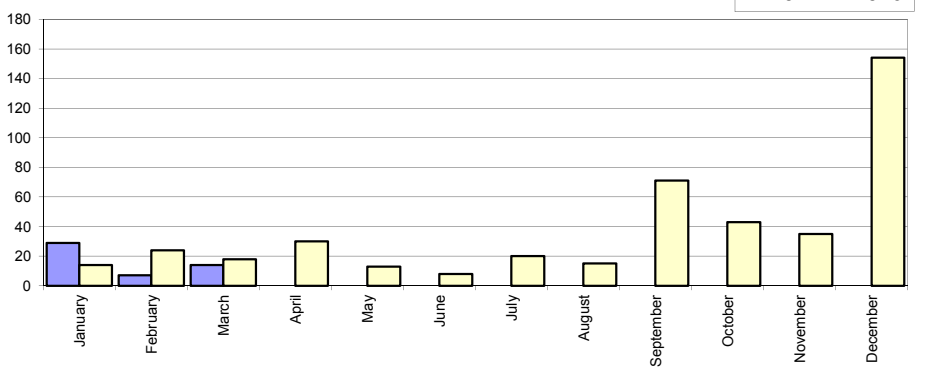
*) Estimari APIA / APIA Estimates

Livrari comerciale usoare + minibus autohtone / Domestic LCV + minibus sales

Luna/An	2017	2016	Variatie
January	29	14	107.1%
February	7	24	-70.8%
March	14	18	-22.2%
April	-	30	-
May	-	13	-
June	-	8	-
July	-	20	-
August	-	15	-
September	-	71	-
October	-	43	-
November	-	35	-
December	-	154	-
Total	50	56	-10.7%

445

Livrari autohtone (buc)

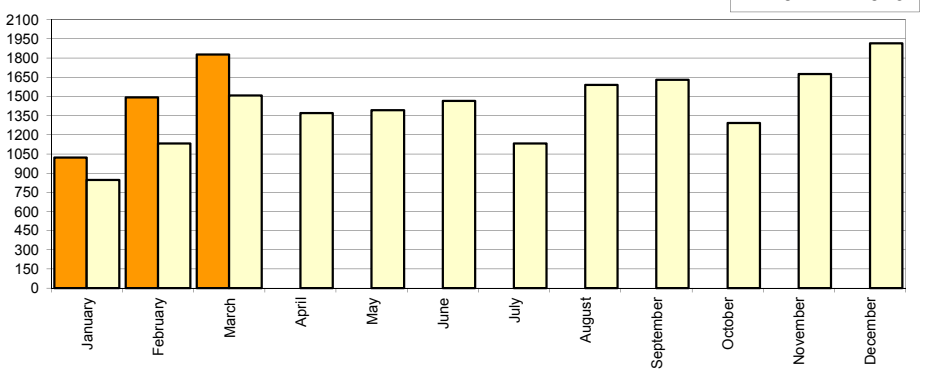


Livrari comerciale usoare + minibus import / Imported LCV + minibus sales

Luna/An	2017	2016	Variatie
January	1 021	848	20.4%
February	1 492	1 131	31.9%
March	1 827	1 508	21.2%
April	-	1 370	-
May	-	1 393	-
June	-	1 464	-
July	-	1 133	-
August	-	1 590	-
September	-	1 630	-
October	-	1 293	-
November	-	1 676	-
December	-	1 916	-
Total	4 340	3 487	24.5%

16 952

Livrari import (buc)

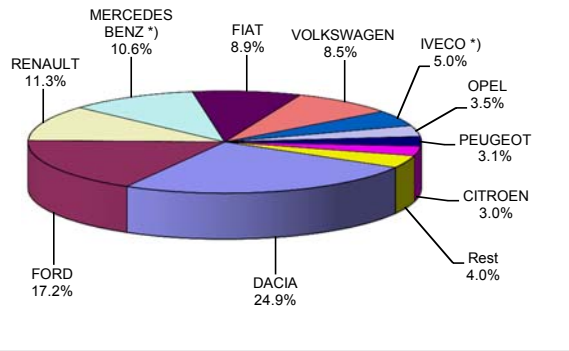


Livrari comerciale <3.5t si minibus - marci / LCV + minibus sales by make

MARCA	Martie		Variatie Februarie		2017		Variatie2016	
	pozitie	unitati	pozitie	procent	pozitie	unitati	pozitie	procent
DACIA	1	536	1	27.0%	1	1094	1	58.6%
FORD	2	281	2	16.6%	2	755	2	39.8%
RENAULT	5	159	4	16.9%	3	497	5	53.4%
MERCEDES BENZ *)	4	176	3	-14.6%	4	465	3	18.3%
FIAT	3	186	6	69.1%	5	392	4	11.1%
VOLKSWAGEN	6	150	5	14.5%	6	373	7	84.7%
IVECO *)	7	80	7	-3.6%	7	221	6	-0.9%
OPEL	8	77	8	60.4%	8	152	10	3.4%
PEUGEOT	10	51	10	50.0%	9	134	9	-29.5%
CITROEN	9	63	9	43.2%	10	133	8	-34.2%
Rest		82		86.4%		174		-
TOTAL		1841		22.8%		4390		23.9%

*) Estimari APIA / APIA Estimates

Vanzari com <3.5t si minibus - marci - 2017



Livrari comerciale <3.5t si minibus - modele / LCV + minibus sales by model

MODEL	Martie		Variatie Februarie		2017		Variatie2016	
	pozitie	unitati	pozitie	procent	pozitie	unitati	pozitie	procent
DACIA DOKKER VAN	1	522	1	25.8%	1	1044	1	64.7%
FORD TRANSIT	2	160	2	26.0%	2	441	3	53.7%
FIAT DUCATO	3	103	3	15.7%	3	270	2	-6.6%
RENAULT MASTER	4	88	6	22.2%	4	218	8	39.7%
MERCEDES BENZ *) SPRINTER	5	88	5	10.0%	5	216	6	25.6%
IVECO *) DAILY	7	79	4	-3.7%	6	215	4	0.0%
MERCEDES BENZ *) SPRINTER BUS	10	49	7	-26.9%	7	138	9	4.6%
CITROEN JUMPER	8	59	9	47.5%	8	123	5	-30.5%
VOLKSWAGEN LT/CRAI	9	52	8	26.8%	9	121	25	218.4%
FIAT DOBLO CARGO	6	81	19	326.3%	10	118	17	118.5%
Rest		560		19.9%		1486		-
TOTAL		1841		22.8%		4390		23.9%

*) Estimari APIA / APIA Estimates

Vanzari com <3.5t si minibus - modele - 2017

