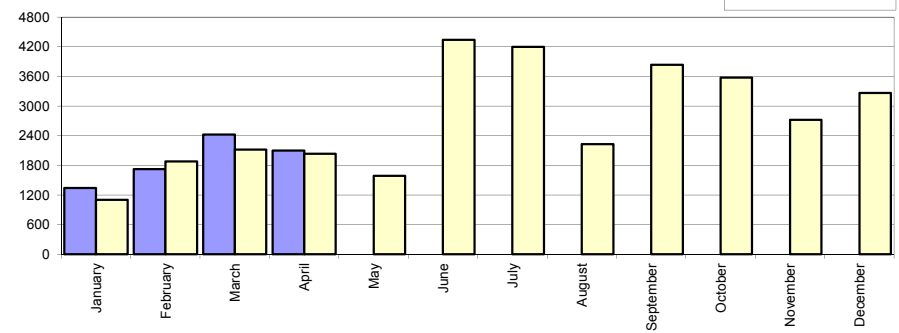


Livrari autoturisme autohtone / Domestic passenger car sales

Luna/An	2017	2016	Variatie
January	1 345	1 103	21.9%
February	1 722	1 878	-8.3%
March	2 425	2 116	14.6%
April	2 102	2 035	3.3%
May	-	1 586	-
June	-	4 336	-
July	-	4 197	-
August	-	2 231	-
September	-	3 831	-
October	-	3 577	-
November	-	2 722	-
December	-	3 262	-
Total	7 594	7 132	6.5%

Livrari autohtone (buc)



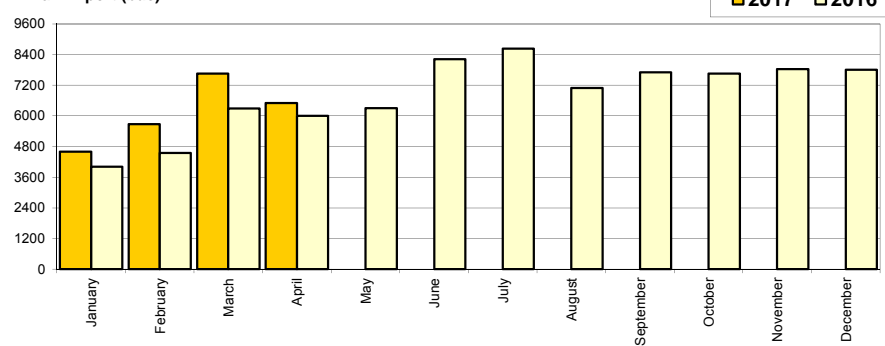
32 874

* Datele cuprind atat volumele Ford cat si Dacia

Livrari autoturisme import / Imported passenger car sales

Luna/An	2017	2016	Variatie
January	4 598	4 008	14.7%
February	5 674	4 549	24.7%
March	7 662	6 297	21.7%
April	6 499	6 007	8.2%
May	-	6 309	-
June	-	8 226	-
July	-	8 634	-
August	-	7 093	-
September	-	7 710	-
October	-	7 656	-
November	-	7 835	-
December	-	7 806	-
Total	24 433	20 861	17.1%

Livrari import (buc)

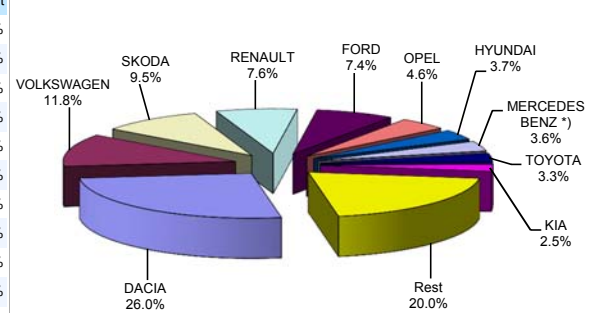


82 130

Top livrari autoturisme - marci / Passenger car top - by make

MARCA	Aprilie		Variatie Martie		2017		Variatie2016	
	pozitie	unitati	pozitie	procent	pozitie	unitati	pozitie	procent
DACIA	1	2290	1	-11.8%	1	8341	1	7.6%
VOLKSWAGEN	2	947	2	-11.5%	2	3793	2	24.0%
SKODA	3	877	4	8.3%	3	3055	3	3.9%
RENAULT	4	756	5	1.6%	4	2429	5	35.9%
FORD	5	617	3	-25.4%	5	2361	4	26.1%
OPEL	6	397	6	-20.8%	6	1470	6	35.2%
HYUNDAI	7	323	7	-18.4%	7	1175	8	45.2%
MERCEDES BENZ *)	9	254	10	-20.4%	8	1147	7	21.0%
TOYOTA	10	227	9	-40.3%	9	1063	11	41.7%
KIA	8	288	12	18.5%	10	789	16	48.9%
Rest		1625		-26.1%		6404		-
TOTAL		8601		-14.7%		32027		14.4%

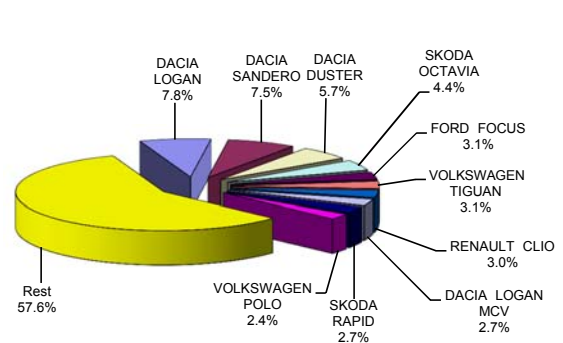
Autoturisme - marci - 2017



Top livrari autoturisme - modele / Passenger car top - by model

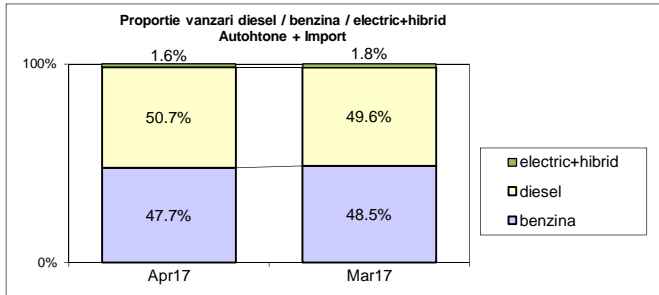
MODEL	Aprilie		Variatie Martie		2017		Variatie2016	
	pozitie	unitati	pozitie	procent	pozitie	unitati	pozitie	procent
DACIA LOGAN	3	572	1	-38.8%	1	2489	1	-13.3%
DACIA SANDERO	2	597	2	-24.1%	2	2407	2	31.8%
DACIA DUSTER	1	676	3	40.5%	3	1816	3	18.1%
SKODA OCTAVIA	4	383	5	10.7%	4	1418	4	12.2%
FORD FOCUS	12	179	4	-60.6%	5	995	8	32.8%
VOLKSWAGEN TIGU	10	209	7	-18.0%	6	985	29	312.1%
RENAULT CLIO	8	228	6	-30.5%	7	966	9	30.9%
DACIA LOGAN MCV	6	257	9	16.8%	8	877	5	1.7%
SKODA RAPID	7	235	10	6.8%	9	866	7	2.7%
VOLKSWAGEN POL	16	153	11	-30.1%	10	766	6	-10.7%
Rest		5112		-12.5%		18442		-
TOTAL		8601		-14.7%		32027		14.4%

Autoturisme - modele - 2017

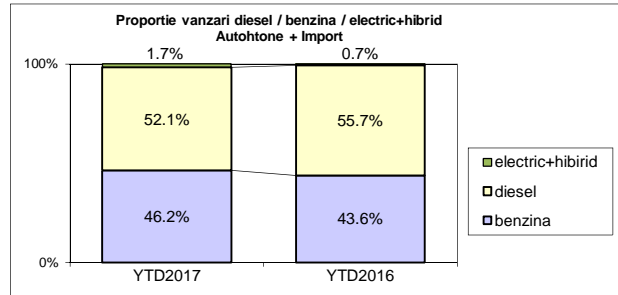


Segmentare dupa tipul de combustibil / Segmentation by type of fuel
Autohtone + Import / Domestic + Imported

	benzina		diesel		electric+hibrid		total
Apr-17	4100	47.7%	4360	50.7%	141	1.6%	8 601
Mar-17	4896	48.5%	5008	49.6%	183	1.8%	10 087



	benzina		diesel		electric+hibrid		total
YTD2017	14807	46.2%	16672	52.1%	548	1.7%	32 027
YTD2016	12218	43.6%	15580	55.7%	195	0.7%	27 993


Livrari autoturisme in functie de tipul de combustibil / Passenger car sales by fuel type

Luna/An	2017		Pondere		2016		Variatie 17/16	
	diesel	benzina	diesel	benzina	diesel	benzina	diesel	benzina
January	3 212	2 618	54.0%	44.1%	3 036	2 036	5.8%	28.6%
February	4 092	3 193	55.3%	43.2%	3 429	2 963	19.3%	7.8%
March	5 008	4 896	49.6%	48.5%	4 668	3 693	7.3%	32.6%
April	4 360	4 100	50.7%	47.7%	4 447	3 526	-2.0%	16.3%
May	-	-	-	-	4 543	3 296	-	-
June	-	-	-	-	5 054	7 448	-	-
July	-	-	-	-	4 867	7 865	-	-
August	-	-	-	-	4 034	5 120	-	-
September	-	-	-	-	5 474	5 942	-	-
October	-	-	-	-	5 494	5 609	-	-
November	-	-	-	-	5 740	4 609	-	-
December	-	-	-	-	5 963	4 965	-	-
Total	16 672	14 807	52.1%	46.2%	15 580	12 218	7.0%	21.2%

Top Marci - Electrice (BEV,EREV,PHEV) si Hibrde (HEV)

MARCA	BEV+EREV+PHEV			HEV		
	2017	2016	Var. %	2017	2016	Var. %
BMW	14	8	75.0%	-	-	-
MERCEDES BENZ *)	11	0	-	1	1	0.0%
AUDI	7	0	-	-	-	-
VOLKSWAGEN	4	4	0.0%	-	-	-
VOLVO	3	3	0.0%	-	-	-
PORSCHE	2	0	-	-	-	-
TOYOTA	-	-	-	451	119	279.0%
LEXUS	-	-	-	45	48	-6.3%
KIA	-	-	-	3	0	-
FORD	-	-	-	1	1	0.0%
LAND ROVER	-	-	-	1	7	-85.7%
Altele	5	4	25.0%	-	-	-
TOTAL	46	19	142.1%	502	176	185.2%

*) Estimari APIA / APIA Estimates

Top 10 Autoturisme in functie de tipul de alimentare - marci / Top 10 passenger car sales by fuel type and make
Top 10 diesel - marci

MARCA	Aprilie 2017	4 luni 2017	Pondere %	Variatie an precedent %	Pondere diesel/total
DACIA	1180	4127	24.8%	8.2%	49.5%
VOLKSWAGEN	580	2174	13.0%	35.1%	57.3%
SKODA	461	1952	11.7%	6.2%	63.9%
FORD	292	1305	7.8%	13.2%	55.3%
RENAULT	446	1302	7.8%	10.9%	53.6%
MERCEDES BENZ *)	203	950	5.7%	21.3%	82.8%
BMW	115	694	4.2%	-2.7%	90.1%
AUDI	158	507	3.0%	11.9%	81.6%
PEUGEOT	122	444	2.7%	18.4%	68.4%
NISSAN	87	436	2.6%	5.6%	66.8%
Rest	716	2781	16.7%	-14.6%	33.9%
TOTAL	4360	16672	100%	7.0%	52.1%

*) Estimari APIA / APIA Estimates

Top 10 benzina - marci

MARCA	Aprilie 2017	4 luni 2017	Pondere %	Variatie an precedent %	Pondere benzina/total
DACIA	1110	4214	28.5%	7.0%	50.5%
VOLKSWAGEN	367	1615	10.9%	11.7%	42.6%
OPEL	322	1147	7.7%	75.7%	78.0%
RENAULT	310	1127	7.6%	84.2%	46.4%
SKODA	416	1103	7.4%	0.0%	36.1%
FORD	325	1055	7.1%	46.7%	44.7%
HYUNDAI	210	767	5.2%	91.8%	65.3%
TOYOTA	91	524	3.5%	32.0%	49.3%
SUZUKI	131	481	3.2%	34.7%	91.4%
KIA	158	430	2.9%	67.3%	54.5%
Rest	660	2344	15.8%	0.3%	33.4%
TOTAL	4100	14807	100%	21.2%	46.2%

*) Estimari APIA / APIA Estimates

Top 10 Autoturisme in functie de tipul de alimentare - modele / Top 10 passenger car sales by fuel type and model
Top 10 diesel - model

MODEL	Aprilie 2017	4 luni 2017	Pondere %	Variatie an precedent %	Pondere diesel/total
DACIA DUSTER	474	1374	8.2%	12.9%	75.7%
SKODA OCTAVIA	230	1097	6.6%	4.7%	77.4%
DACIA LOGAN	245	1088	6.5%	9.2%	43.7%
VOLKSWAGEN TIGUAN	188	871	5.2%	324.9%	88.4%
DACIA SANDERO	182	685	4.1%	13.8%	28.5%
RENAULT MEGANE	198	499	3.0%	206.1%	68.2%
DACIA LOGAN MCV	130	462	2.8%	-12.0%	52.7%
SKODA RAPID	86	438	2.6%	10.1%	50.6%
FORD FOCUS	63	416	2.5%	1.5%	41.8%
VOLKSWAGEN PASSAT	129	405	2.4%	-5.8%	91.2%
Rest	2435	9337	56.0%	-2.6%	49.1%
TOTAL	4360	16672	100%	7.0%	52.1%

*) Estimari APIA / APIA Estimates

Top 10 benzina - model

MODEL	Aprilie 2017	4 luni 2017	Pondere %	Variatie an precedent %	Pondere benzina/total
DACIA SANDERO	415	1722	11.6%	40.7%	71.5%
DACIA LOGAN	327	1401	9.5%	-25.2%	56.3%
VOLKSWAGEN POLO	134	711	4.8%	-15.0%	92.8%
FORD FOCUS	116	579	3.9%	70.8%	58.2%
RENAULT CLIO	116	571	3.9%	67.0%	59.1%
OPEL ASTRA	159	530	3.6%	118.1%	76.9%
DACIA DUSTER	202	442	3.0%	37.7%	24.3%
SKODA RAPID	149	428	2.9%	-3.8%	49.4%
DACIA LOGAN MCV	127	415	2.8%	23.1%	47.3%
SUZUKI VITARA	93	359	2.4%	52.1%	90.9%
Rest	2262	7649	51.7%	27.0%	38.7%
TOTAL	4100	14807	100%	21.2%	46.2%

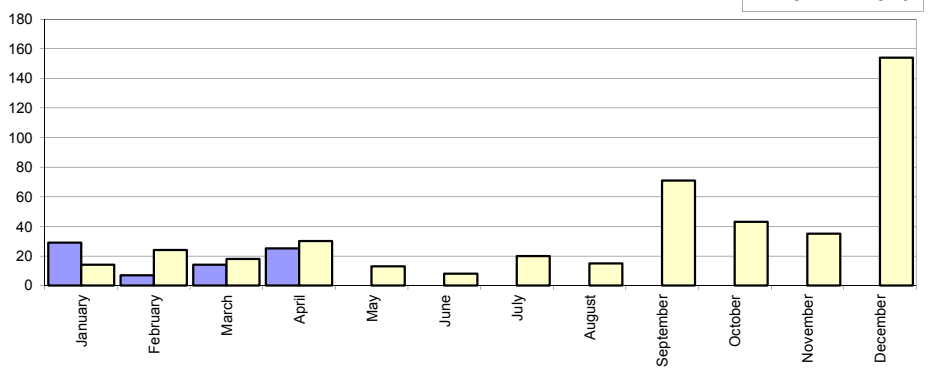
*) Estimari APIA / APIA Estimates

Livri comerciale usoare + minibus autohtone / Domestic LCV + minibus sales

Luna/An	2017	2016	Variatie
January	29	14	107.1%
February	7	24	-70.8%
March	14	18	-22.2%
April	25	30	-16.7%
May	-	13	-
June	-	8	-
July	-	20	-
August	-	15	-
September	-	71	-
October	-	43	-
November	-	35	-
December	-	154	-
Total	75	86	-12.8%

445

Livri autohtone (buc)

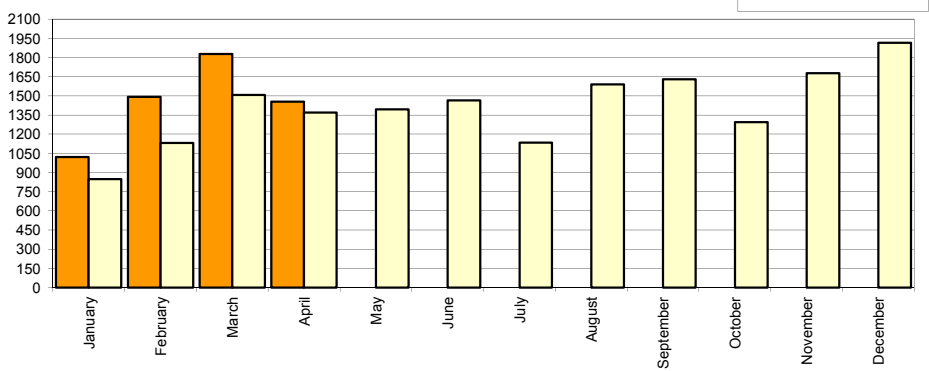


Livri comerciale usoare + minibus import / Imported LCV + minibus sales

Luna/An	2017	2016	Variatie
January	1 021	848	20.4%
February	1 492	1 131	31.9%
March	1 827	1 508	21.2%
April	1 454	1 370	6.1%
May	-	1 393	-
June	-	1 464	-
July	-	1 133	-
August	-	1 590	-
September	-	1 630	-
October	-	1 293	-
November	-	1 676	-
December	-	1 916	-
Total	5 794	4 857	19.3%

16 952

Livri import (buc)

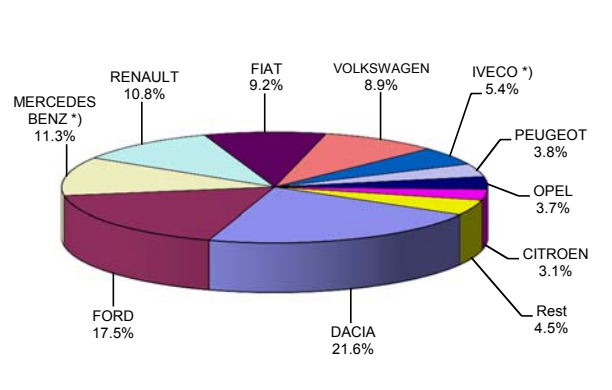


Livri comerciale <3.5t si minibus - marci / LCV + minibus sales by make

MARCA	Aprilie		Variatie Martie		2017		Variatie2016	
	pozitie	unitati	pozitie	procent	pozitie	unitati	pozitie	procent
DACIA	3	176	1	-67.2%	1	1270	1	33.8%
FORD	1	273	2	-2.9%	2	1028	2	39.7%
MERCEDES BENZ *)	2	201	4	14.2%	3	666	3	19.4%
RENAULT	6	138	5	-13.2%	4	635	4	28.8%
FIAT	5	150	3	-19.4%	5	542	5	16.8%
VOLKSWAGEN	4	150	6	0.0%	6	523	7	95.9%
IVECO *)	7	93	7	16.3%	7	314	6	-6.6%
PEUGEOT	8	90	10	76.5%	8	224	9	-9.3%
OPEL	9	68	8	-11.7%	9	220	10	12.2%
CITROEN	11	51	9	-19.1%	10	184	8	-30.6%
Rest		89		8.5%		263		-
TOTAL		1479		-19.7%		5869		18.7%

*) Estimari APIA / APIA Estimates

Vanzari com <3.5t si minibus - marci - 2016



Livri comerciale <3.5t si minibus - modele / LCV + minibus sales by model

MODEL	Aprilie		Variatie Martie		2017		Variatie2016	
	pozitie	unitati	pozitie	procent	pozitie	unitati	pozitie	procent
DACIA DOKKER VAN	2	151	1	-71.1%	1	1195	1	38.5%
FORD TRANSIT	1	152	2	-5.0%	2	593	2	44.6%
FIAT DUCATO	3	104	3	1.0%	3	374	3	-1.1%
IVECO *) DAILY	4	92	7	16.5%	4	307	4	-6.4%
MERCEDES BENZ *) SPRINTER	6	66	5	-25.0%	5	282	6	15.6%
RENAULT MASTER	7	63	4	-28.4%	6	281	5	6.0%
MERCEDES BENZ *) SPRINTER BUS	8	63	10	28.6%	7	201	9	6.9%
PEUGEOT BOXER	5	79	11	75.6%	8	190	8	-10.0%
CITROEN JUMPER	12	42	8	-28.8%	9	165	7	-28.9%
FIAT DOBLO CARGO	11	44	6	-45.7%	10	162	19	134.8%
Rest		623		9.9%		2119		-
TOTAL		1479		-19.7%		5869		18.7%

*) Estimari APIA / APIA Estimates

Vanzari com <3.5t si minibus - modele - 2016

