

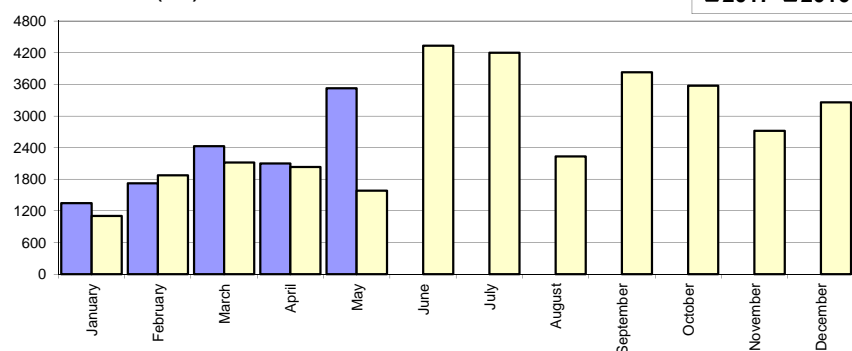
## Livrari autoturisme autohtone / Domestic passenger car sales

Luna/An	2017	2016	Variatie
January	1 345	1 103	21.9%
February	1 722	1 878	-8.3%
March	2 425	2 116	14.6%
April	2 102	2 035	3.3%
May	3 527	1 586	122.4%
June	-	4 336	-
July	-	4 197	-
August	-	2 231	-
September	-	3 831	-
October	-	3 577	-
November	-	2 722	-
December	-	3 262	-
<b>Total</b>	<b>11 121</b>	<b>8 718</b>	<b>27.6%</b>

32 874

\* Datele cuprind atat volumele Ford cat si Dacia

Livrari autohtone (buc)

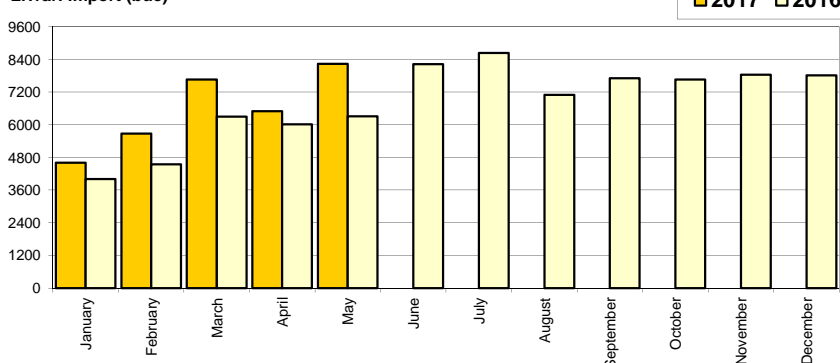


## Livrari autoturisme import / Imported passenger car sales

Luna/An	2017	2016	Variatie
January	4 598	4 008	14.7%
February	5 674	4 549	24.7%
March	7 662	6 297	21.7%
April	6 499	6 007	8.2%
May	8 238	6 309	30.6%
June	-	8 226	-
July	-	8 634	-
August	-	7 093	-
September	-	7 710	-
October	-	7 656	-
November	-	7 835	-
December	-	7 806	-
<b>Total</b>	<b>32 671</b>	<b>27 170</b>	<b>20.2%</b>

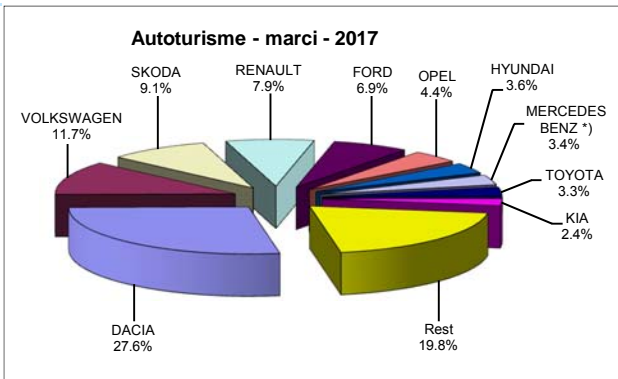
82 130

Livrari import (buc)



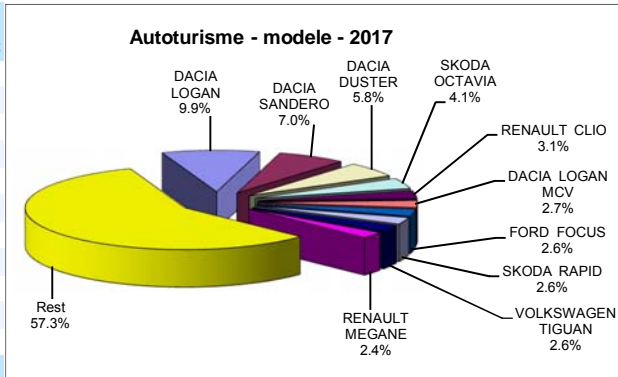
## Top livrari autoturisme - marci / Passenger car top - by make

MARCA	Mai		Variatie Aprilie		2017		Variatie2016	
	pozitie	unitati	pozitie	procent	pozitie	unitati	pozitie	procent
DACIA	1	3735	1	63.1%	1	12076	1	25.9%
VOLKSWAGEN	2	1309	2	38.2%	2	5102	2	32.1%
SKODA	4	910	3	3.8%	3	3965	3	4.7%
RENAULT	3	1037	4	37.2%	4	3466	4	34.3%
FORD	5	652	5	5.7%	5	3013	5	27.2%
OPEL	6	449	6	13.1%	6	1919	6	26.1%
HYUNDAI	7	409	7	26.6%	7	1584	10	59.5%
MERCEDES BENZ *)	10	351	9	38.2%	8	1498	7	20.8%
TOYOTA	9	364	10	60.4%	9	1427	9	42.0%
KIA	12	263	8	-8.7%	10	1052	15	44.3%
Rest		2286		40.7%		8690		
<b>TOTAL</b>		11765		36.8%		43792		22.0%



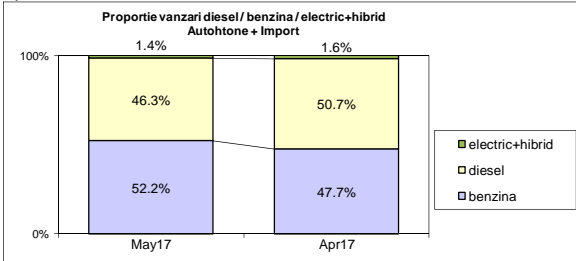
## Top livrari autoturisme - modele / Passenger car top - by model

MODEL	Mai		Variatie Aprilie		2017		Variatie2016	
	pozitie	unitati	pozitie	procent	pozitie	unitati	pozitie	procent
DACIA LOGAN	1	1849	3	223.3%	1	4338	1	24.1%
DACIA SANDERO	3	648	2	8.5%	2	3055	2	38.5%
DACIA DUSTER	2	707	1	4.6%	3	2523	3	27.7%
SKODA OCTAVIA	6	361	4	-5.7%	4	1779	4	6.0%
RENAULT CLIO	4	384	8	68.4%	5	1350	5	18.1%
DACIA LOGAN MCV	8	314	6	22.2%	6	1191	8	19.1%
FORD FOCUS	19	160	12	-10.6%	7	1155	9	23.0%
SKODA RAPID	10	264	7	12.3%	8	1130	7	9.4%
VOLKSWAGEN TIGUAN	21	142	10	-32.1%	9	1127	28	251.1%
RENAULT MEGANE	7	324	5	24.1%	10	1056	34	291.1%
Rest		6612		32.1%		25088		
<b>TOTAL</b>		11765		36.8%		43792		22.0%

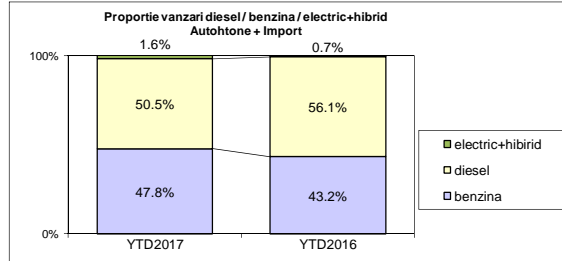


## Autohtone + Import / Domestic + Imported

	benzina		diesel		electric+hibrid		total
May-17	6145	52.2%	5451	46.3%	169	1.4%	11 765
Apr-17	4100	47.7%	4360	50.7%	141	1.6%	8 601



	benzina		diesel		electric+hibrid		total
YTD2017	20952	47.8%	22123	50.5%	717	1.6%	43 792
YTD2016	15514	43.2%	20123	56.1%	251	0.7%	35 888



## Livrari autoturisme in functie de tipul de combustibil / Passenger car sales by fuel type

Luna/An	2017		Pondere		2016		Variatie 17/16	
	diesel	benzina	diesel	benzina	diesel	benzina	diesel	benzina
January	3 212	2 618	54.0%	44.1%	3 036	2 036	5.8%	28.6%
February	4 092	3 193	55.3%	43.2%	3 429	2 963	19.3%	7.8%
March	5 008	4 896	49.6%	48.5%	4 668	3 693	7.3%	32.6%
April	4 360	4 100	50.7%	47.7%	4 447	3 526	-2.0%	16.3%
May	5 451	6 145	46.3%	52.2%	4 543	3 296	20.0%	86.4%
June	-	-	-	-	5 054	7 448	-	-
July	-	-	-	-	4 867	7 865	-	-
August	-	-	-	-	4 034	5 120	-	-
September	-	-	-	-	5 474	5 942	-	-
October	-	-	-	-	5 494	5 609	-	-
November	-	-	-	-	5 740	4 609	-	-
December	-	-	-	-	5 963	4 965	-	-
<b>Total</b>	<b>22 123</b>	<b>20 952</b>	<b>50.5%</b>	<b>47.8%</b>	<b>20 123</b>	<b>15 514</b>	<b>9.9%</b>	<b>35.1%</b>

## Top Marci - Electrice (BEV, EREV, PHEV) si Hibride (HEV)

MARCA	BEV+EREV+PHEV			HEV		
	2017	2016	Var. %	2017	2016	Var. %
MERCEDES BENZ *)	19	5	280.0%	2	1	100.0%
BMW	16	10	60.0%	-	-	-
AUDI	8	0	-	-	-	-
VOLKSWAGEN	4	4	0.0%	-	-	-
VOLVO	4	5	-20.0%	-	-	-
PORSCHE	3	0	-	-	-	-
RENAULT	1	1	0.0%	-	-	-
TOYOTA	-	-	-	597	148	303.4%
LEXUS	-	-	-	52	66	-21.2%
KIA	-	-	-	3	0	-
LAND ROVER	-	-	-	2	7	-71.4%
Altele	5	3	-	1	1	-
<b>TOTAL</b>	<b>60</b>	<b>28</b>	<b>114.3%</b>	<b>657</b>	<b>223</b>	<b>194.6%</b>

\*) Estimari APIA / APIA Estimates

## Top 10 Autoturisme in functie de tipul de alimentare - marci / Top 10 passenger car sales by fuel type and make

## Top 10 diesel - marci

MARCA	2017		Pondere %	Variatie an precedent %	Pondere diesel/total
	Mai 2017	5 luni 2017			
DACIA	1732	5859	26.5%	18.8%	48.5%
VOLKSWAGEN	792	2966	13.4%	44.8%	58.1%
SKODA	478	2430	11.0%	0.4%	61.3%
RENAULT	560	1862	8.4%	10.2%	53.7%
FORD	343	1648	7.4%	15.4%	54.7%
MERCEDES BENZ *)	257	1207	5.5%	17.0%	80.6%
BMW	149	843	3.8%	-2.5%	90.3%
AUDI	175	682	3.1%	10.5%	80.1%
NISSAN	135	571	2.6%	0.2%	59.7%
PEUGEOT	110	554	2.5%	18.4%	63.4%
Rest	720	3501	15.8%	-13.6%	-
<b>TOTAL</b>	<b>5451</b>	<b>22123</b>	<b>100%</b>	<b>9.9%</b>	<b>50.5%</b>

\*) Estimari APIA / APIA Estimates

## Top 10 benzina - marci

MARCA	2017		Pondere %	Variatie an precedent %	Pondere benzina/total
	Mai 2017	5 luni 2017			
DACIA	2003	6217	29.7%	33.4%	51.5%
VOLKSWAGEN	517	2132	10.2%	17.8%	41.8%
RENAULT	476	1603	7.7%	79.9%	46.2%
SKODA	432	1535	7.3%	12.3%	38.7%
OPEL	333	1480	7.1%	56.4%	77.1%
FORD	309	1364	6.5%	45.3%	45.3%
HYUNDAI	284	1051	5.0%	106.1%	66.4%
SUZUKI	390	871	4.2%	89.3%	93.2%
TOYOTA	186	710	3.4%	24.3%	49.8%
KIA	140	570	2.7%	54.5%	54.2%
Rest	1075	3419	16.3%	14.4%	-
<b>TOTAL</b>	<b>6145</b>	<b>20952</b>	<b>100%</b>	<b>35.1%</b>	<b>47.8%</b>

\*) Estimari APIA / APIA Estimates

## Top 10 Autoturisme in functie de tipul de alimentare - modele / Top 10 passenger car sales by fuel type and model

## Top 10 diesel - model

MODEL	2017		Pondere %	Variatie an precedent %	Pondere diesel/total
	Mai 2017	5 luni 2017			
DACIA DUSTER	605	1979	8.9%	22.3%	78.4%
DACIA LOGAN	475	1563	7.1%	19.5%	36.0%
SKODA OCTAVIA	271	1368	6.2%	-2.3%	76.9%
VOLKSWAGEN TIGUAN	124	995	4.5%	247.9%	88.3%
DACIA SANDERO	242	927	4.2%	30.7%	30.3%
RENAULT MEGANE	246	745	3.4%	251.4%	70.5%
DACIA LOGAN MCV	237	699	3.2%	12.9%	58.7%
VOLKSWAGEN PASSAT	153	558	2.5%	0.2%	87.7%
RENAULT CLIO	136	531	2.4%	-13.8%	39.3%
SKODA RAPID	77	515	2.3%	4.5%	45.6%
Rest	2885	12243	55.3%	-0.5%	-
<b>TOTAL</b>	<b>5451</b>	<b>22123</b>	<b>100%</b>	<b>9.9%</b>	<b>50.5%</b>

\*) Estimari APIA / APIA Estimates

## Top 10 benzina - model

MODEL	2017		Pondere %	Variatie an precedent %	Pondere benzina/total
	Mai 2017	5 luni 2017			
DACIA LOGAN	1374	2775	13.2%	26.8%	64.0%
DACIA SANDERO	406	2128	10.2%	42.2%	69.7%
RENAULT CLIO	248	819	3.9%	55.4%	60.7%
VOLKSWAGEN POLO	94	805	3.8%	-21.2%	77.3%
OPEL ASTRA	167	697	3.3%	91.5%	76.8%
FORD FOCUS	104	683	3.3%	61.5%	59.1%
SKODA RAPID	187	615	2.9%	13.9%	54.4%
SUZUKI VITARA	203	562	2.7%	87.3%	93.0%
DACIA DUSTER	102	544	2.6%	52.0%	21.6%
VOLKSWAGEN GOLF	202	497	2.4%	74.4%	51.0%
Rest	3058	10827	51.7%	35.2%	-
<b>TOTAL</b>	<b>6145</b>	<b>20952</b>	<b>100%</b>	<b>35.1%</b>	<b>47.8%</b>

\*) Estimari APIA / APIA Estimates

## Distributia livrarilor dupa tipul de tractiune 4x4 / Sales breakdown on four wheel drive

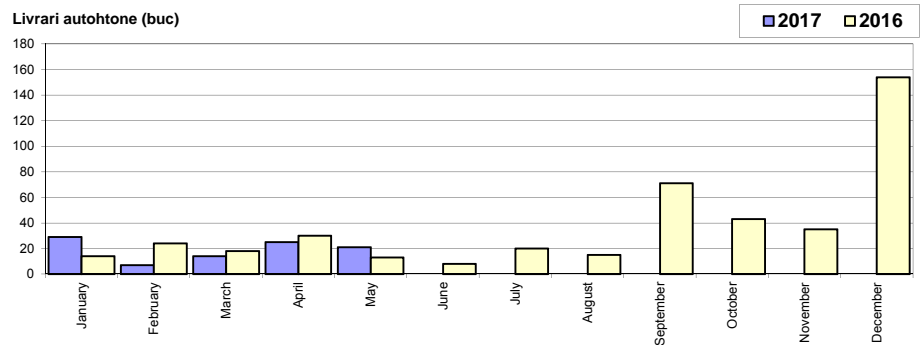
Marca	YTD 2017			YTD 2016	Variatie 2017 - 2016 %
	unitati	pondere			
		din total 4x4	din total marca		
DACIA	2058	20.2%	17.0%	1671	23.2%
VOLKSWAGEN	1239	12.2%	24.3%	626	97.9%
MERCEDES BENZ *)	1083	10.6%	72.3%	880	23.1%
BMW	818	8.0%	87.6%	818	0.0%
SUZUKI	707	6.9%	75.6%	330	114.2%
AUDI	566	5.6%	66.5%	575	-1.6%
LAND ROVER	496	4.9%	100.0%	460	7.8%
FORD	472	4.6%	15.7%	292	61.6%
HYUNDAI	368	3.6%	23.2%	307	19.9%
SKODA	352	3.5%	8.9%	357	-1.4%
KIA	251	2.5%	23.9%	195	28.7%
MAZDA	194	1.9%	29.8%	195	-0.5%
NISSAN	182	1.8%	19.0%	150	21.3%
JEEP	176	1.7%	93.6%	143	23.1%
TOYOTA	172	1.7%	12.1%	110	56.4%
Altele	1050	10.3%	11.6%	1022	2.7%
<b>TOTAL</b>	<b>10184</b>	<b>100.0%</b>	<b>23.3%</b>	<b>8131</b>	<b>25.2%</b>

\*) Estimari APIA / APIA Estimates

## Livri comerciale usoare + minibus autohtone / Domestic LCV + minibus sales

Luna/An	2017	2016	Variatie
January	29	14	107.1%
February	7	24	-70.8%
March	14	18	-22.2%
April	25	30	-16.7%
May	21	13	61.5%
June	-	8	-
July	-	20	-
August	-	15	-
September	-	71	-
October	-	43	-
November	-	35	-
December	-	154	-
<b>Total</b>	<b>96</b>	<b>99</b>	<b>-3.0%</b>

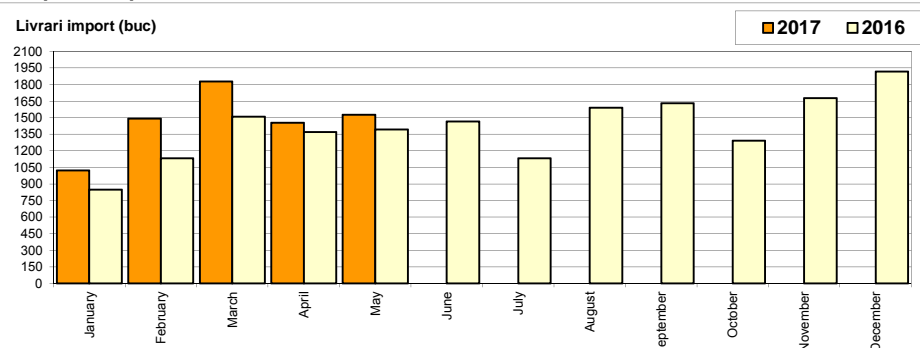
445



## Livri comerciale usoare + minibus import / Imported LCV + minibus sales

Luna/An	2017	2016	Variatie
January	1 021	848	20.4%
February	1 492	1 131	31.9%
March	1 827	1 508	21.2%
April	1 454	1 370	6.1%
May	1 526	1 393	9.5%
June	-	1 464	-
July	-	1 133	-
August	-	1 590	-
September	-	1 630	-
October	-	1 293	-
November	-	1 676	-
December	-	1 916	-
<b>Total</b>	<b>7 320</b>	<b>6 250</b>	<b>17.1%</b>

16 952

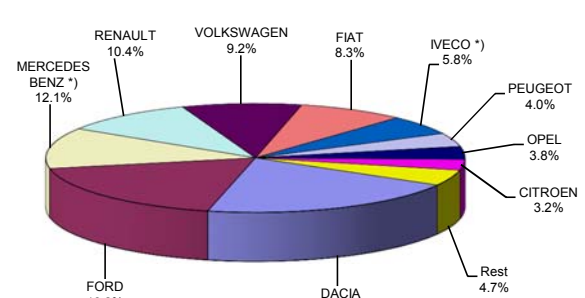


## Livri comerciale &lt;3.5t si minibus - marci / LCV + minibus sales by make

MARCA	Mai		Variatie Aprilie		2017		Variatie 2016	
	pozitie	unitati	pozitie	procent	pozitie	unitati	pozitie	procent
DACIA	2	236	3	34.1%	1	1506	1	29.5%
FORD	1	322	1	18.0%	2	1350	2	36.2%
MERCEDES BENZ *)	3	234	2	16.4%	3	900	3	23.8%
RENAULT	5	133	6	-3.6%	4	768	4	15.7%
VOLKSWAGEN	4	161	4	7.3%	5	684	7	91.1%
FIAT	8	70	5	-53.3%	6	612	5	4.6%
IVECO *)	6	115	7	23.7%	7	429	6	-10.8%
PEUGEOT	7	75	8	-16.7%	8	299	9	0.7%
OPEL	9	65	9	-4.4%	9	285	10	14.9%
CITROEN	10	51	11	0.0%	10	235	8	-30.7%
Rest		85		-4.5%		348		
<b>TOTAL</b>		<b>1547</b>		<b>4.6%</b>		<b>7416</b>		<b>16.8%</b>

\*) Estimari APIA / APIA Estimates

## Vanzari com &lt;3.5t si minibus - marci - 2016



## Livri comerciale &lt;3.5t si minibus - modele / LCV + minibus sales by model

MODEL	Mai		Variatie Aprilie		2017		Variatie 2016	
	pozitie	unitati	pozitie	procent	pozitie	unitati	pozitie	procent
DACIA DOKKER VAN	1	215	2	42.4%	1	1410	1	32.5%
FORD TRANSIT	2	168	1	10.5%	2	761	2	30.3%
FIAT DUCATO	7	64	3	-38.5%	3	438	3	-7.0%
IVECO *) DAILY	3	113	4	22.8%	4	420	4	-10.8%
MERCEDES BENZ *) SPRINTER	4	92	6	39.4%	5	374	6	23.0%
RENAULT MASTER	5	81	7	28.6%	6	362	5	2.8%
MERCEDES BENZ *) SPRINTER BUS	6	73	8	15.9%	7	274	8	2.2%
PEUGEOT BOXER	19	26	5	-67.1%	8	216	9	-13.9%
VOLKSWAGEN LT/CRAFTER	8	53	13	32.5%	9	214	23	214.7%
CITROEN JUMPER	12	45	12	7.1%	10	210	7	-28.3%
Rest		617		-1.6%		2737		
<b>TOTAL</b>		<b>1547</b>		<b>4.6%</b>		<b>7416</b>		<b>16.8%</b>

\*) Estimari APIA / APIA Estimates

## Vanzari com &lt;3.5t si minibus - modele - 2016

