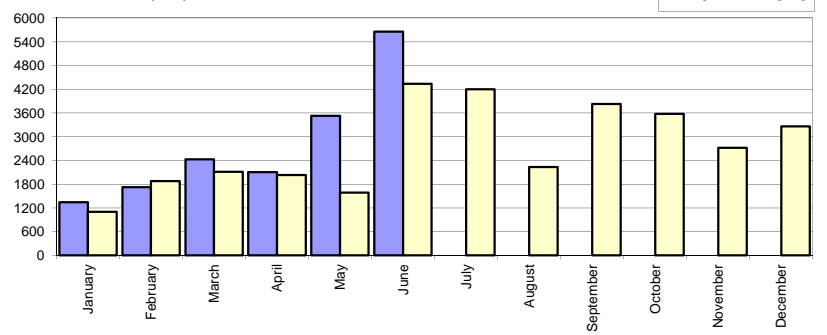


Livrari autoturisme autohtone / Domestic passenger car sales

Luna/An	2017	2016	Variatie
January	1 345	1 103	21.9%
February	1 722	1 878	-8.3%
March	2 425	2 116	14.6%
April	2 102	2 035	3.3%
May	3 527	1 586	122.4%
June	5 659	4 336	30.5%
July	-	4 197	-
August	-	2 231	-
September	-	3 831	-
October	-	3 577	-
November	-	2 722	-
December	-	3 262	-
Total	16 780	13 054	28.5%

Livrari autohtone (buc)



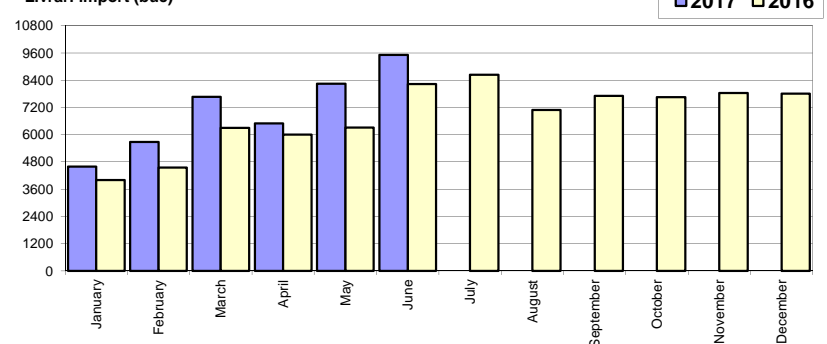
32 874

* Datele cuprind atat volumele Ford cat si Dacia / Data includes both Dacia and Ford deliveries.

Livrari autoturisme import / Imported passenger car sales

Luna/An	2017	2016	Variatie
January	4 598	4 008	14.7%
February	5 674	4 549	24.7%
March	7 662	6 297	21.7%
April	6 499	6 007	8.2%
May	8 238	6 309	30.6%
June	9 516	8 226	15.7%
July	-	8 634	-
August	-	7 093	-
September	-	7 710	-
October	-	7 656	-
November	-	7 835	-
December	-	7 806	-
Total	42 187	35 396	19.2%

Livrari import (buc)

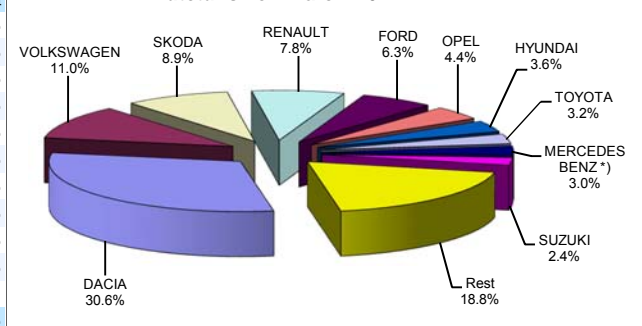


82 130

Top livrari autoturisme - marci / Passenger car top - by make

MARCA	Iunie		Variatie Mai		2017		Variatie 2016	
	pozitie	unitati	pozitie	procent	pozitie	unitati	pozitie	procent
DACIA	1	5950	1	59.3%	1	18026	1	27.2%
VOLKSWAGEN	2	1399	2	6.9%	2	6501	2	32.9%
SKODA	3	1268	4	39.3%	3	5233	3	8.4%
RENAULT	4	1141	3	10.0%	4	4607	4	19.0%
FORD	6	681	5	4.5%	5	3694	5	26.8%
OPEL	5	693	6	54.3%	6	2612	6	31.6%
HYUNDAI	7	568	7	38.9%	7	2152	8	49.0%
TOYOTA	9	439	9	20.6%	8	1866	9	30.3%
MERCEDES BENZ *)	11	275	10	-21.7%	9	1773	7	20.5%
SUZUKI	8	502	8	22.7%	10	1437	18	105.0%
Rest		2259		5.6%		11066		
TOTAL		15175		29.0%		58967		21.7%

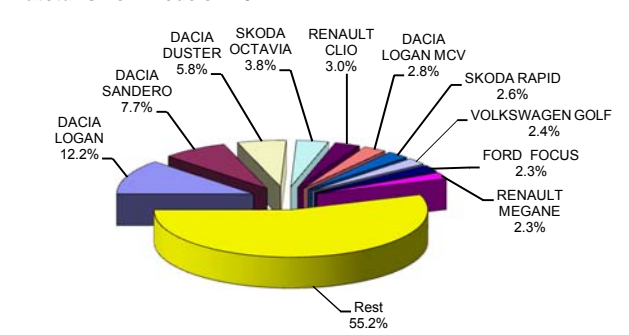
Autoturisme - marci - 2017



Top livrari autoturisme - modele / Passenger car top - by model

MODEL	Iunie		Variatie Mai		2017		Variatie 2016	
	pozitie	unitati	pozitie	procent	pozitie	unitati	pozitie	procent
DACIA LOGAN	1	2841	1	53.7%	1	7179	1	21.0%
DACIA SANDERO	2	1500	3	131.5%	2	4555	2	44.7%
DACIA DUSTER	3	879	2	24.3%	3	3402	3	37.5%
SKODA OCTAVIA	4	448	6	24.1%	4	2227	4	3.3%
RENAULT CLIO	8	417	4	8.6%	5	1767	5	3.5%
DACIA LOGAN MCV	5	437	8	39.2%	6	1628	6	12.2%
SKODA RAPID	6	423	10	60.2%	7	1553	7	19.7%
VOLKSWAGEN GOLF	7	421	5	12.3%	8	1396	10	35.1%
FORD FOCUS	18	188	19	17.5%	9	1343	9	24.0%
RENAULT MEGANE	11	283	7	-12.7%	10	1339	34	253.3%
Rest		7338		15.0%		32578		
TOTAL		15175		29.0%		58967		21.7%

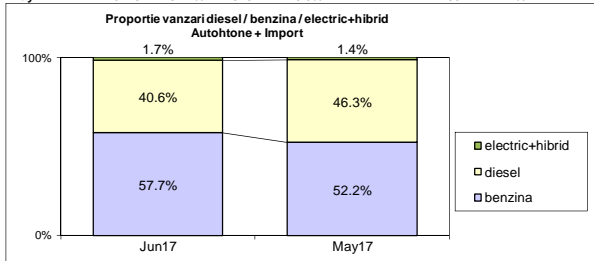
Autoturisme - modele - 2017



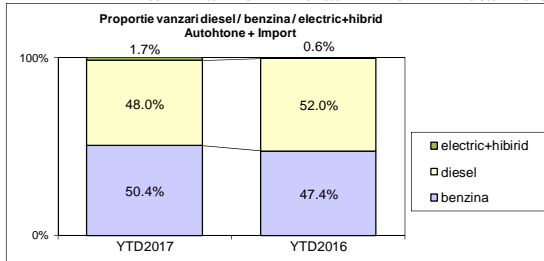
Segmentare dupa tipul de combustibil / Segmentation by type of fuel

Autohtone + Import / Domestic + Imported

	benzina	diesel	electric+hibrid	total
Jun-17	8752 57.7%	6158 40.6%	265 1.7%	15 175
May-17	6145 52.2%	5451 46.3%	169 1.4%	11 765



	benzina	diesel	electric+hibrid	total
YTD2017	29704 50.4%	28281 48.0%	982 1.7%	58 967
YTD2016	22962 47.4%	25177 52.0%	311 0.6%	48 450



Livrari autoturisme in functie de tipul de combustibil / Passenger car sales by fuel type

Luna/An	2017		Pondere		2016		Variatie 17/16	
	diesel	benzina	diesel	benzina	diesel	benzina	diesel	benzina
January	3 212	2 618	54.0%	44.1%	3 036	2 036	5.8%	28.6%
February	4 092	3 193	55.3%	43.2%	3 429	2 963	19.3%	7.8%
March	5 008	4 896	49.6%	48.5%	4 668	3 693	7.3%	32.6%
April	4 360	4 100	50.7%	47.7%	4 447	3 526	-2.0%	16.3%
May	5 451	6 145	46.3%	52.2%	4 543	3 296	20.0%	86.4%
June	6 158	8 752	40.6%	57.7%	5 054	7 448	21.8%	17.5%
July	-	-	-	-	4 867	7 865	-	-
August	-	-	-	-	4 034	5 120	-	-
September	-	-	-	-	5 474	5 942	-	-
October	-	-	-	-	5 494	5 609	-	-
November	-	-	-	-	5 740	4 609	-	-
December	-	-	-	-	5 963	4 965	-	-
Total	28 281	29 704	48.0%	50.4%	25 177	22 962	12.3%	29.4%

Top Marci - Electrice (BEV, EREV, PHEV) si Hibrade (HEV)

MARCA	BEV+EREV+PHEV			HEV		
	2017	2016	Var. %	2017	2016	Var. %
MERCEDES BENZ *)	32	6	433.3%	2	1	100.0%
BMW	29	12	141.7%	-	-	-
RENAULT	12	1	-	-	-	-
AUDI	8	0	-	-	-	-
VOLKSWAGEN	5	4	25.0%	-	-	-
VOLVO	5	7	-28.6%	-	-	-
MITSUBISHI	4	3	33.3%	-	-	-
PORSCHE	4	1	300.0%	-	-	-
TOYOTA	-	-	-	791	192	312.0%
LEXUS	-	-	-	72	73	-1.4%
KIA	-	-	-	8	0	-
Altele	5	1	-	5	10	-
TOTAL	104	35	197.1%	878	276	218.1%

*) Estimari APIA / APIA Estimates

Top 10 Autoturisme in functie de tipul de alimentare - marci / Top 10 passenger car sales by fuel type and make

Top 10 diesel - marci

MARCA	Iunie		Pondere %	Variatie an precedent %	Pondere diesel/total
	2017	6 luni 2017			
DACIA	2392	8251	29.2%	34.7%	45.8%
VOLKSWAGEN	646	3612	12.8%	39.7%	55.6%
SKODA	483	2913	10.3%	-5.3%	55.7%
RENAULT	576	2438	8.6%	5.5%	52.9%
FORD	397	2045	7.2%	16.5%	55.4%
MERCEDES BENZ *)	188	1395	4.9%	14.3%	78.7%
BMW	212	1055	3.7%	-1.3%	89.9%
AUDI	202	884	3.1%	15.1%	78.9%
HYUNDAI	179	712	2.5%	20.7%	33.1%
PEUGEOT	119	673	2.4%	24.6%	61.7%
Rest	764	4303	15.2%	-16.3%	-
TOTAL	6158	28281	100%	12.3%	48.0%

*) Estimari APIA / APIA Estimates

Top 10 benzina - marci

MARCA	Iunie		Pondere %	Variatie an precedent %	Pondere benzina/total
	2017	6 luni 2017			
DACIA	3558	9775	32.9%	21.4%	54.2%
VOLKSWAGEN	752	2884	9.7%	25.3%	44.4%
SKODA	785	2320	7.8%	32.3%	44.3%
RENAULT	554	2157	7.3%	38.3%	46.8%
OPEL	539	2019	6.8%	57.0%	77.3%
FORD	283	1647	5.5%	42.4%	44.6%
HYUNDAI	388	1439	4.8%	68.5%	66.9%
SUZUKI	476	1347	4.5%	115.9%	93.7%
TOYOTA	215	925	3.1%	5.2%	49.6%
KIA	165	735	2.5%	56.4%	54.5%
Rest	1037	4456	15.0%	10.7%	-
TOTAL	8752	29704	100%	29.4%	50.4%

*) Estimari APIA / APIA Estimates

Top 10 Autoturisme in functie de tipul de alimentare - modele / Top 10 passenger car sales by fuel type and model

Top 10 diesel - model

MODEL	Iunie		Pondere %	Variatie an precedent %	Pondere diesel/total
	2017	6 luni 2017			
DACIA DUSTER	776	2755	9.7%	41.6%	81.0%
DACIA LOGAN	645	2208	7.8%	35.0%	30.8%
SKODA OCTAVIA	292	1660	5.9%	-3.7%	74.5%
DACIA SANDERO	520	1447	5.1%	71.4%	31.8%
VOLKSWAGEN TIGUAN	108	1103	3.9%	147.9%	88.0%
RENAULT MEGANE	196	941	3.3%	214.7%	70.3%
DACIA LOGAN MCV	237	936	3.3%	12.9%	57.5%
VOLKSWAGEN PASSAT	168	726	2.6%	7.9%	88.4%
RENAULT CLIO	130	661	2.3%	-23.5%	37.4%
VOLKSWAGEN GOLF	152	630	2.2%	9.0%	45.1%
Rest	2934	15214	53.8%	-0.8%	-
TOTAL	6158	28281	100%	12.3%	48.0%

*) Estimari APIA / APIA Estimates

Top 10 benzina - model

MODEL	Iunie		Pondere %	Variatie an precedent %	Pondere benzina/total
	2017	6 luni 2017			
DACIA LOGAN	2196	4971	16.7%	15.7%	69.2%
DACIA SANDERO	980	3108	10.5%	34.9%	68.2%
RENAULT CLIO	287	1106	3.7%	31.0%	62.6%
OPEL ASTRA	333	1030	3.5%	97.3%	78.0%
VOLKSWAGEN POLO	165	970	3.3%	-17.5%	77.7%
SKODA RAPID	350	965	3.2%	48.0%	62.1%
SUZUKI VITARA	275	837	2.8%	92.9%	93.3%
FORD FOCUS	104	787	2.6%	61.9%	58.6%
VOLKSWAGEN GOLF	268	765	2.6%	68.9%	54.8%
DACIA LOGAN MCV	200	692	2.3%	11.3%	42.5%
Rest	3594	14473	48.7%	29.5%	-
TOTAL	8752	29704	100%	29.4%	50.4%

*) Estimari APIA / APIA Estimates

Distributia livrarilor dupa tipul de tractiune 4x4 / Deliveries breakdown on four wheel drive

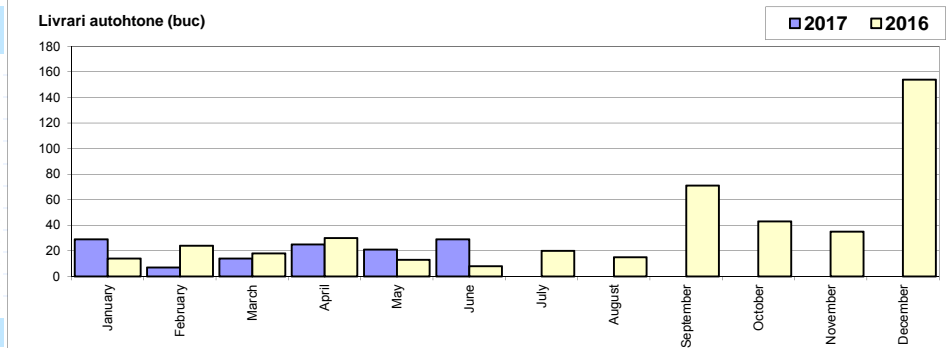
Marca	YTD 2017			YTD 2016	Variatie 2017/2016 %
	unitati	pondere			
		din total 4x4	din total marca		
DACIA	2682	21.0%	14.9%	2043	31.3%
VOLKSWAGEN	1400	11.0%	21.5%	818	71.1%
MERCEDES BENZ *)	1276	10.0%	72.0%	1036	23.2%
SUZUKI	1030	8.1%	71.7%	453	127.4%
BMW	1021	8.0%	87.0%	1015	0.6%
AUDI	697	5.5%	62.2%	673	3.6%
FORD	600	4.7%	16.2%	392	53.1%
LAND ROVER	586	4.6%	100.0%	556	5.4%
SKODA	475	3.7%	9.1%	442	7.5%
HYUNDAI	457	3.6%	21.2%	389	17.5%
KIA	329	2.6%	24.4%	246	33.7%
MAZDA	232	1.8%	27.8%	247	-6.1%
TOYOTA	215	1.7%	11.5%	135	59.3%
RENAULT	209	1.6%	4.5%	131	59.5%
NISSAN	207	1.6%	17.0%	186	11.3%
Altele	1339	10.5%	18.1%	1297	3.2%
TOTAL	12755	100.0%	21.6%	10059	26.8%

*) Estimari APIA / APIA Estimates

Livrari comerciale usoare + minibusse autohtone / Domestic LCV + minibus sales

Luna/An	2017	2016	Variatie
January	29	14	107.1%
February	7	24	-70.8%
March	14	18	-22.2%
April	25	30	-16.7%
May	21	13	61.5%
June	29	8	262.5%
July	-	20	-
August	-	15	-
September	-	71	-
October	-	43	-
November	-	35	-
December	-	154	-
Total	125	107	16.8%

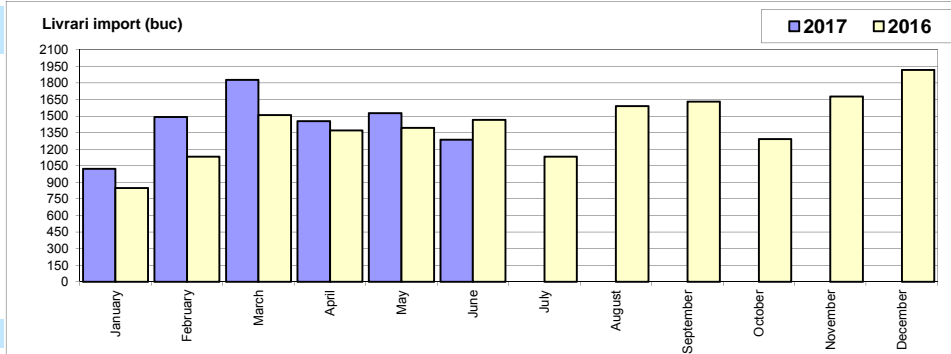
445



Livrari comerciale usoare + minibusse import / Imported LCV + minibus sales

Luna/An	2017	2016	Variatie
January	1 021	848	20.4%
February	1 492	1 131	31.9%
March	1 827	1 508	21.2%
April	1 454	1 370	6.1%
May	1 526	1 393	9.5%
June	1 287	1 464	-12.1%
July	-	1 133	-
August	-	1 590	-
September	-	1 630	-
October	-	1 293	-
November	-	1 676	-
December	-	1 916	-
Total	8 607	7 714	11.6%

16 952

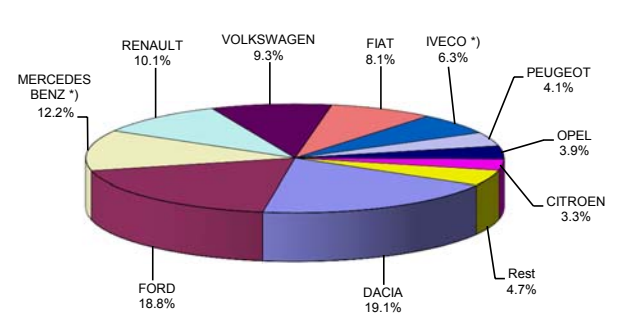


Livrari comerciale <3.5t si minibusse - marci / LCV + minibus sales by make

MARCA	Iunie		Variatie Mai		2017		Variatie2016	
	pozitie	unitati	pozitie	procent	pozitie	unitati	pozitie	procent
DACIA	2	164	2	-30.5%	1	1670	1	12.8%
FORD	1	288	1	-10.6%	2	1638	2	28.4%
MERCEDES BENZ *)	3	161	3	-31.2%	3	1061	3	21.5%
RENAULT	6	117	5	-12.0%	4	885	4	11.2%
VOLKSWAGEN	4	131	4	-18.6%	5	815	7	74.2%
FIAT	7	94	8	34.3%	6	706	5	-7.1%
IVECO *)	5	124	6	7.8%	7	553	6	-6.4%
PEUGEOT	8	63	7	-16.0%	8	362	9	6.8%
OPEL	9	57	9	-12.3%	9	342	10	21.7%
CITROEN	10	55	10	7.8%	10	290	8	-29.1%
Rest		62		-27.1%		410		
TOTAL		1316		-14.9%		8732		11.6%

*) Estimari APIA / APIA Estimates

Vanzari com <3.5t si minibusse - marci - 2017



Livrari comerciale <3.5t si minibusse - modele / LCV + minibus sales by model

MODEL	Iunie		Variatie Mai		2017		Variatie2016	
	pozitie	unitati	pozitie	procent	pozitie	unitati	pozitie	procent
DACIA DOKKER VAN	2	135	1	-37.2%	1	1545	1	12.5%
FORD TRANSIT	1	171	2	1.8%	2	932	2	31.6%
IVECO *) DAILY	3	123	3	8.9%	3	543	4	-5.9%
FIAT DUCATO	4	89	7	39.1%	4	527	3	-15.7%
RENAULT MASTER	5	79	5	-2.5%	5	441	5	4.8%
MERCEDES BENZ *) S	7	56	4	-39.1%	6	430	7	21.8%
MERCEDES BENZ *) S	9	53	6	-27.4%	7	327	8	3.5%
PEUGEOT BOXER	8	55	19	111.5%	8	271	9	-5.6%
VOLKSWAGEN LT/CR	6	57	8	7.6%	9	271	24	208.0%
CITROEN JUMPER	10	51	12	13.3%	10	261	6	-27.7%
Rest		447		-27.6%		3184		
TOTAL		1316		-14.9%		8732		11.6%

*) Estimari APIA / APIA Estimates

Vanzari com <3.5t si minibusse - modele - 2017

