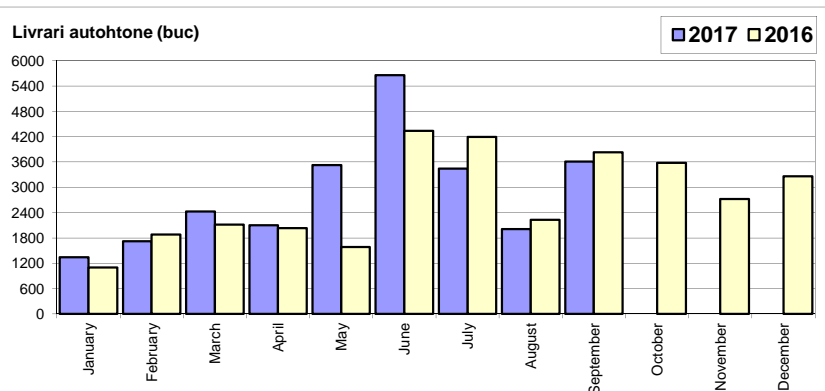


## Livrari autoturisme autohtone / Domestic passenger car sales

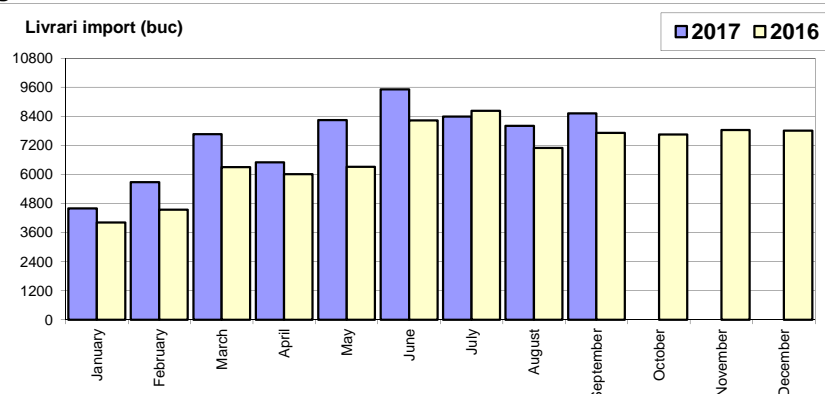
Luna/An	2017	2016	Variatie
January	1 345	1 103	21.9%
February	1 722	1 878	-8.3%
March	2 425	2 116	14.6%
April	2 102	2 035	3.3%
May	3 527	1 586	122.4%
June	5 659	4 336	30.5%
July	3 446	4 197	-17.9%
August	2 013	2 231	-9.8%
September	3 614	3 831	-5.7%
October	-	3 577	-
November	-	2 722	-
December	-	3 262	-
<b>Total</b>	<b>25 853</b>	<b>23 313</b>	<b>10.9%</b>



\* Datele cuprind atat volumele Ford cat si Dacia / Data includes both Dacia and Ford deliveries.

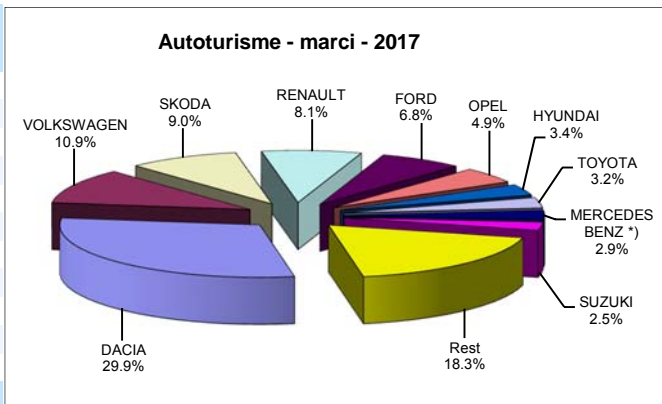
## Livrari autoturisme import / Imported passenger car sales

Luna/An	2017	2016	Variatie
January	4 598	4 008	14.7%
February	5 674	4 549	24.7%
March	7 662	6 297	21.7%
April	6 499	6 007	8.2%
May	8 238	6 309	30.6%
June	9 516	8 226	15.7%
July	8 392	8 634	-2.8%
August	8 011	7 093	12.9%
September	8 527	7 710	10.6%
October	-	7 656	-
November	-	7 835	-
December	-	7 806	-
<b>Total</b>	<b>67 117</b>	<b>58 833</b>	<b>14.1%</b>



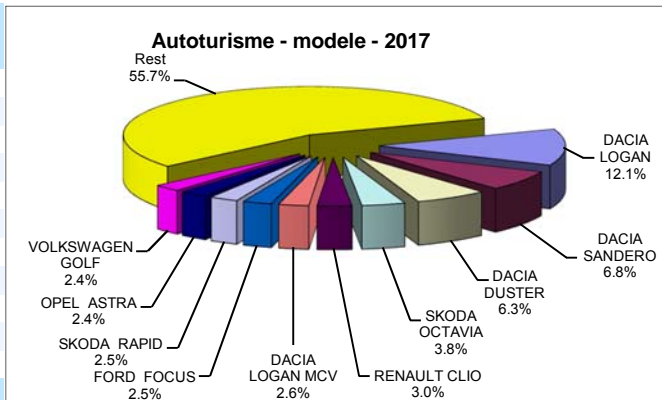
## Top livrari autoturisme - marci / Passenger car top - by make

MARCA	Septembrie		Variatie August		2017		Variatie2016	
	pozitie	unitati	pozitie	procent	pozitie	unitati	pozitie	procent
DACIA	1	3797	1	61.1%	1	<b>27799</b>	1	10.8%
VOLKSWAGEN	2	1345	2	9.4%	2	<b>10158</b>	2	19.0%
SKODA	3	1107	3	19.7%	3	<b>8385</b>	3	10.5%
RENAULT	4	934	4	1.1%	4	<b>7506</b>	4	27.0%
FORD	5	860	5	7.1%	5	<b>6301</b>	5	25.6%
OPEL	6	532	6	-28.8%	6	<b>4561</b>	6	19.1%
HYUNDAI	8	320	9	4.9%	7	<b>3174</b>	7	23.2%
TOYOTA	7	359	7	5.0%	8	<b>2995</b>	8	24.0%
MERCEDES BENZ *)	10	298	10	0.7%	9	<b>2701</b>	9	13.4%
SUZUKI	15	217	8	-33.8%	10	<b>2350</b>	15	44.3%
Rest		2372		34.2%		<b>17040</b>		
<b>TOTAL</b>		<b>12141</b>		<b>21.1%</b>		<b>92970</b>		<b>13.2%</b>

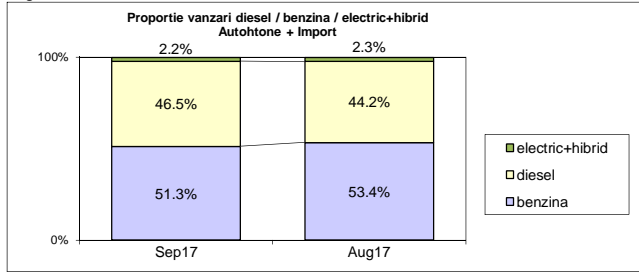


## Top livrari autoturisme - modele / Passenger car top - by model

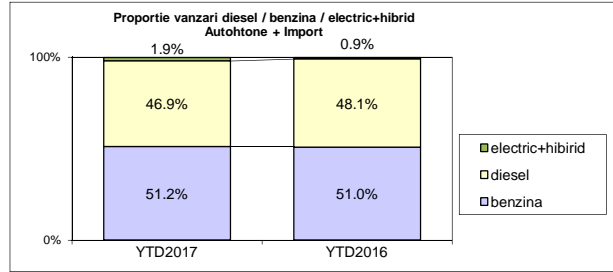
MODEL	Septembrie		Variatie August		2017		Variatie2016	
	pozitie	unitati	pozitie	procent	pozitie	unitati	pozitie	procent
DACIA LOGAN	1	1417	1	52.4%	1	<b>11274</b>	1	-0.2%
DACIA SANDERO	2	916	25	682.9%	2	<b>6282</b>	2	24.2%
DACIA DUSTER	3	879	2	6.0%	3	<b>5849</b>	3	28.7%
SKODA OCTAVIA	4	448	3	16.4%	4	<b>3499</b>	4	8.6%
RENAULT CLIO	10	257	6	-13.8%	5	<b>2786</b>	5	18.4%
DACIA LOGAN MCV	5	401	23	192.7%	6	<b>2425</b>	6	3.6%
FORD FOCUS	6	323	5	-4.2%	7	<b>2346</b>	9	30.1%
SKODA RAPID	7	303	14	59.5%	8	<b>2293</b>	7	4.1%
OPEL ASTRA	12	228	4	-39.8%	9	<b>2256</b>	10	27.4%
VOLKSWAGEN GOLF	8	298	7	9.6%	10	<b>2196</b>	11	24.6%
Rest		6671		8.5%		<b>51764</b>		
<b>TOTAL</b>		<b>12141</b>		<b>21.1%</b>		<b>92970</b>		<b>13.2%</b>



	benzina		diesel		electric+hibrid		total
Sep-17	6227	51.3%	5650	46.5%	264	2.2%	12 141
Aug-17	5354	53.4%	4435	44.2%	235	2.3%	10 024



	benzina		diesel		electric+hibrid		total
YTD2017	47557	51.2%	43631	46.9%	1782	1.9%	92 970
YTD2016	41889	51.0%	39552	48.1%	705	0.9%	82 146



Livrari autoturisme in functie de tipul de combustibil / Passenger car sales by fuel type

Luna/An	2017		Pondere		2016		Variatie 17/16	
	diesel	benzina	diesel	benzina	diesel	benzina	diesel	benzina
January	3 212	2 618	54.0%	44.1%	3 036	2 036	5.8%	28.6%
February	4 092	3 193	55.3%	43.2%	3 429	2 963	19.3%	7.8%
March	5 008	4 896	49.6%	48.5%	4 668	3 693	7.3%	32.6%
April	4 360	4 100	50.7%	47.7%	4 447	3 526	-2.0%	16.3%
May	5 451	6 136	46.3%	52.2%	4 543	3 296	20.0%	86.2%
June	6 158	8 751	40.6%	57.7%	5 054	7 448	21.8%	17.5%
July	5 265	6 282	44.5%	53.1%	4 867	7 865	8.2%	-20.1%
August	4 435	5 354	44.2%	53.4%	4 034	5 120	9.9%	4.6%
September	5 650	6 227	46.5%	51.3%	5 474	5 942	3.2%	4.8%
October	-	-	-	-	5 494	5 609	-	-
November	-	-	-	-	5 740	4 609	-	-
December	-	-	-	-	5 963	4 965	-	-
<b>Total</b>	<b>43 631</b>	<b>47 557</b>	<b>46.9%</b>	<b>51.2%</b>	<b>39 552</b>	<b>41 889</b>	<b>10.3%</b>	<b>13.5%</b>

Top Marci - Electrice (BEV, EREV, PHEV) si Hibrade (HEV)

MARCA	BEV+EREV+PHEV			HEV		
	2017	2016	Var. %	2017	2016	Var. %
BMW	78	34	129.4%	-	-	-
MERCEDES BENZ *)	48	20	140.0%	4	3	33.3%
RENAULT	28	3	-	-	-	-
VOLKSWAGEN	27	10	170.0%	-	-	-
MINI	20	6	233.3%	-	-	-
AUDI	13	1	-	-	-	-
VOLVO	8	9	-11.1%	-	-	-
PORSCHE	7	2	250.0%	-	-	-
TOYOTA	-	-	-	1383	480	188.1%
LEXUS	-	-	-	110	114	-3.5%
SUZUKI	-	-	-	15	2	-
Altele	10	3	-	31	18	-
<b>TOTAL</b>	<b>239</b>	<b>88</b>	<b>171.6%</b>	<b>1543</b>	<b>617</b>	<b>150.1%</b>

\*) Estimari APIA / APIA Estimates

Top 10 Autoturisme in functie de tipul de alimentare - marci / Top 10 passenger car sales by fuel type and make

Top 10 diesel - marci

MARCA	Septembrie 2017	9 luni 2017	Pondere %	Variatie an precedent %	Pondere diesel/total
DACIA	1739	12952	29.7%	28.9%	46.6%
VOLKSWAGEN	562	5228	12.0%	23.7%	51.5%
SKODA	583	4563	10.5%	0.0%	54.4%
RENAULT	525	3762	8.6%	8.6%	50.1%
FORD	581	3682	8.4%	24.0%	58.4%
MERCEDES BENZ *)	232	2075	4.8%	8.3%	76.8%
BMW	211	1581	3.6%	-4.8%	87.5%
AUDI	137	1275	2.9%	1.4%	75.7%
NISSAN	200	1059	2.4%	-9.2%	54.6%
HYUNDAI	87	1003	2.3%	8.3%	31.6%
Rest	793	6451	14.8%	-12.3%	-
<b>TOTAL</b>	<b>5650</b>	<b>43631</b>	<b>100%</b>	<b>10.3%</b>	<b>46.9%</b>

\*) Estimari APIA / APIA Estimates

Top 10 Autoturisme in functie de tipul de alimentare - modele / Top 10 passenger car sales by fuel type and model

Top 10 diesel - model

MODEL	Septembrie 2017	9 luni 2017	Pondere %	Variatie an precedent %	Pondere diesel/total
DACIA DUSTER	725	4673	10.7%	33.6%	79.9%
DACIA LOGAN	565	3704	8.5%	36.4%	32.9%
SKODA OCTAVIA	289	2489	5.7%	0.3%	71.1%
DACIA SANDERO	113	1795	4.1%	46.2%	28.6%
VOLKSWAGEN TIGUAN	157	1503	3.4%	62.5%	86.3%
DACIA LOGAN MCV	162	1359	3.1%	9.1%	56.0%
RENAULT MEGANE	166	1342	3.1%	144.4%	65.8%
VOLKSWAGEN PASSAT	112	1094	2.5%	11.2%	89.2%
FORD FOCUS	190	1049	2.4%	15.0%	44.7%
RENAULT CLIO	119	1022	2.3%	-11.8%	36.7%
Rest	3052	23601	54.1%	-1.1%	-
<b>TOTAL</b>	<b>5650</b>	<b>43631</b>	<b>100%</b>	<b>10.3%</b>	<b>46.9%</b>

\*) Estimari APIA / APIA Estimates

Top 10 benzina - marci

MARCA	Septembrie 2017	9 luni 2017	Pondere %	Variatie an precedent %	Pondere benzina/total
DACIA	2058	14847	31.2%	-1.3%	53.4%
VOLKSWAGEN	772	4903	10.3%	14.1%	48.3%
SKODA	524	3822	8.0%	26.3%	45.6%
RENAULT	401	3716	7.8%	52.0%	49.5%
OPEL	459	3708	7.8%	31.3%	81.3%
FORD	279	2616	5.5%	27.9%	41.5%
SUZUKI	204	2172	4.6%	47.8%	92.4%
HYUNDAI	229	2159	4.5%	30.8%	68.0%
TOYOTA	135	1349	2.8%	-4.3%	45.0%
KIA	154	1153	2.4%	39.1%	56.1%
Rest	1012	7112	15.0%	3.8%	-
<b>TOTAL</b>	<b>6227</b>	<b>47557</b>	<b>100%</b>	<b>13.5%</b>	<b>51.2%</b>

\*) Estimari APIA / APIA Estimates

Top 10 benzina - model

MODEL	Septembrie 2017	9 luni 2017	Pondere %	Variatie an precedent %	Pondere benzina/total
DACIA LOGAN	852	7570	15.9%	-11.8%	67.1%
DACIA SANDERO	803	4487	9.4%	17.1%	71.4%
OPEL ASTRA	199	1845	3.9%	33.9%	81.8%
RENAULT CLIO	138	1764	3.7%	47.7%	63.3%
VOLKSWAGEN POLO	169	1500	3.2%	-20.8%	79.6%
SKODA RAPID	169	1409	3.0%	17.0%	61.4%
SUZUKI VITARA	132	1361	2.9%	21.7%	92.8%
FORD FOCUS	133	1297	2.7%	45.6%	55.3%
VOLKSWAGEN GOLF	209	1292	2.7%	41.2%	58.8%
DACIA DUSTER	154	1176	2.5%	12.1%	20.1%
Rest	3269	23856	50.2%	20.3%	-
<b>TOTAL</b>	<b>6227</b>	<b>47557</b>	<b>100%</b>	<b>13.5%</b>	<b>51.2%</b>

\*) Estimari APIA / APIA Estimates

Distributia livrarilor dupa tipul de tractiune 4x4 / Deliveries breakdown on four wheel drive

Marca	unitati	YTD 2017		YTD 2016	Variatie 2017/2016 %
		din total 4x4	din total marca		
DACIA	4421	22.3%	15.9%	3674	20.3%
VOLKSWAGEN	2032	10.2%	20.0%	1413	43.8%
MERCEDES BENZ *)	1915	9.6%	70.9%	1600	19.7%
SUZUKI	1637	8.2%	69.7%	1092	49.9%
BMW	1570	7.9%	86.9%	1594	-1.5%
FORD	1033	5.2%	16.4%	689	49.9%
AUDI	997	5.0%	59.2%	1112	-10.3%
LAND ROVER	855	4.3%	100.0%	835	2.4%
SKODA	788	4.0%	9.4%	619	27.3%
HYUNDAI	696	3.5%	21.9%	605	15.0%
KIA	462	2.3%	22.5%	376	22.9%
MAZDA	428	2.2%	29.8%	422	1.4%
JEEP	369	1.9%	96.3%	264	39.8%
TOYOTA	357	1.8%	11.9%	302	18.2%
NISSAN	351	1.8%	18.1%	311	12.9%
Altele	1945	9.8%	10.3%	1869	4.1%
<b>TOTAL</b>	<b>19856</b>	<b>100.0%</b>	<b>21.4%</b>	<b>16777</b>	<b>18.4%</b>

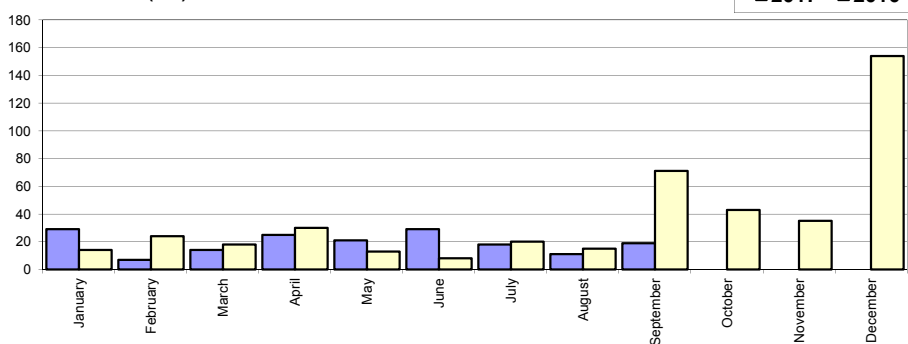
\*) Estimari APIA / APIA Estimates

## Livri comerciale usoare + minibus autohtone / Domestic LCV + minibus sales

Luna/An	2017	2016	Variatie
January	29	14	107.1%
February	7	24	-70.8%
March	14	18	-22.2%
April	25	30	-16.7%
May	21	13	61.5%
June	29	8	262.5%
July	18	20	-10.0%
August	11	15	-26.7%
September	19	71	-73.2%
October	-	43	-
November	-	35	-
December	-	154	-
<b>Total</b>	<b>173</b>	<b>213</b>	<b>-18.8%</b>

445

Livri autohtone (buc)

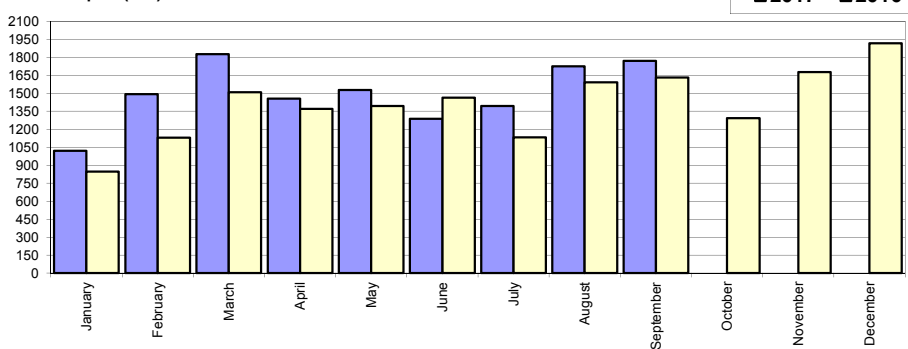


## Livri comerciale usoare + minibus import / Imported LCV + minibus sales

Luna/An	2017	2016	Variatie
January	1 021	848	20.4%
February	1 492	1 131	31.9%
March	1 827	1 508	21.2%
April	1 454	1 370	6.1%
May	1 526	1 393	9.5%
June	1 287	1 464	-12.1%
July	1 395	1 133	23.1%
August	1 725	1 590	8.5%
September	1 769	1 630	8.5%
October	-	1 293	-
November	-	1 676	-
December	-	1 916	-
<b>Total</b>	<b>13 496</b>	<b>12 067</b>	<b>11.8%</b>

16 952

Livri import (buc)

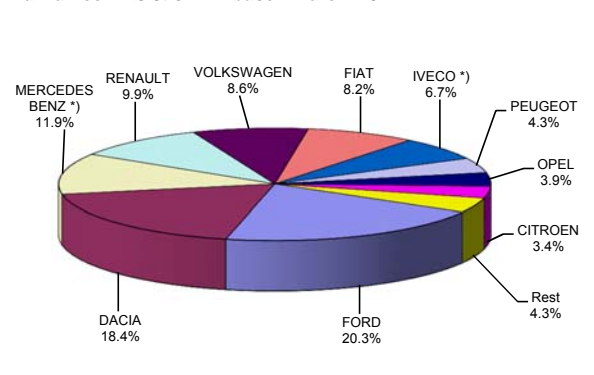


## Livri comerciale &lt;3.5t si minibus - marci / LCV + minibus sales by make

MARCA	Septembrie		Variatie August			2017		Variatie2016	
	pozitie	unitati	pozitie	procent	pozitie	unitati	pozitie	procent	
FORD	1	405	2	5.7%	1	2774	2	31.7%	
DACIA	2	250	1	-42.5%	2	2517	1	11.4%	
MERCEDES BENZ *)	3	183	3	-3.2%	3	1620	3	13.9%	
RENAULT	6	154	4	0.7%	4	1359	4	11.2%	
VOLKSWAGEN	4	165	6	48.7%	5	1182	7	50.0%	
FIAT	7	149	7	43.3%	6	1127	5	-4.4%	
IVECO *)	5	154	5	27.3%	7	920	6	-3.9%	
PEUGEOT	8	117	9	80.0%	8	587	9	11.8%	
OPEL	9	100	10	138.1%	9	533	10	22.3%	
CITROEN	10	61	8	-16.4%	10	466	8	-23.1%	
Rest		50		-16.7%		584			
<b>TOTAL</b>		<b>1788</b>		<b>3.0%</b>		<b>13669</b>		<b>11.3%</b>	

\*) Estimari APIA / APIA Estimates

Vanzari com &lt;3.5t si minibus - marci - 2017



## Livri comerciale &lt;3.5t si minibus - modele / LCV + minibus sales by model

MODEL	Septembrie		Variatie August			2017		Variatie2016	
	pozitie	unitati	pozitie	procent	pozitie	unitati	pozitie	procent	
DACIA DOKKER VAN	1	231	1	-45.5%	1	2344	1	14.5%	
FORD TRANSIT	2	180	2	-10.0%	2	1502	2	27.5%	
IVECO *) DAILY	3	154	3	30.5%	3	905	4	-3.8%	
FIAT DUCATO	4	123	4	39.8%	4	873	3	-10.5%	
RENAULT MASTER	5	84	5	-1.2%	5	690	5	-0.9%	
MERCEDES BENZ *) SPRINTER	7	79	6	-3.7%	6	660	6	10.2%	
MERCEDES BENZ *) SPRINTER BUS	13	49	10	14.0%	7	476	8	-6.1%	
PEUGEOT BOXER	8	74	8	34.6%	8	437	9	-3.3%	
CITROEN JUMPER	12	51	7	-25.0%	9	417	7	-23.4%	
VOLKSWAGEN LT/CRAFTER	14	45	12	12.5%	10	374	21	151.0%	
Rest		718		34.7%		4991			
<b>TOTAL</b>		<b>1788</b>		<b>3.0%</b>		<b>13669</b>		<b>11.3%</b>	

\*) Estimari APIA / APIA Estimates

Vanzari com &lt;3.5t si minibus - modele - 2017

