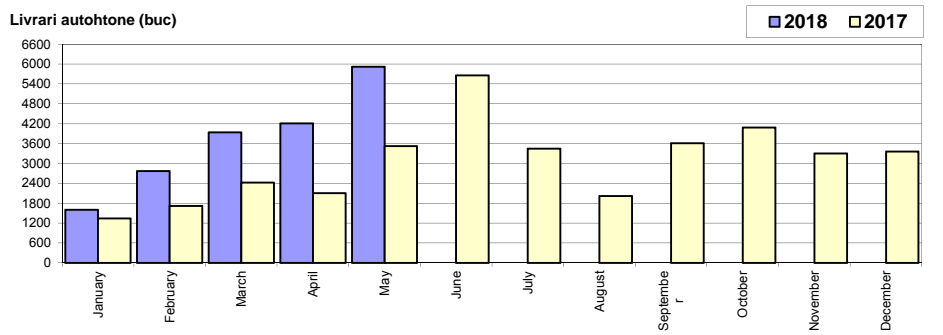


Livrari autoturisme autohtone / Domestic passenger car deliveries

Luna/An	2018	2017	Variatie
January	1 605	1 345	19.3%
February	2 771	1 722	60.9%
March	3 938	2 425	62.4%
April	4 212	2 102	100.4%
May	5 918	3 527	67.8%
June	-	5 659	-
July	-	3 446	-
August	-	2 013	-
September	-	3 614	-
October	-	4 085	-
November	-	3 306	-
December	-	3 357	-
Total	18 444	11 121	65.8%

36 601

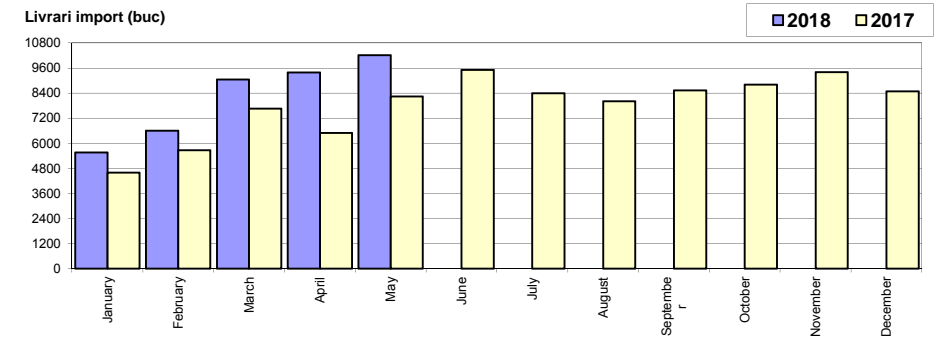


* Datele cuprind atat volumele Ford cat si Dacia / Data includes both Dacia and Ford deliveries.

Livrari autoturisme import / Imported passenger car deliveries

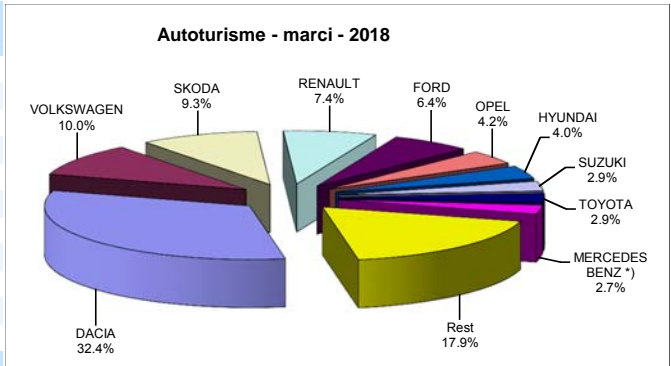
Luna/An	2018	2017	Variatie
January	5 559	4 598	20.9%
February	6 604	5 674	16.4%
March	9 054	7 662	18.2%
April	9 388	6 499	44.5%
May	10 217	8 238	24.0%
June	-	9 516	-
July	-	8 392	-
August	-	8 011	-
September	-	8 527	-
October	-	8 802	-
November	-	9 407	-
December	-	8 487	-
Total	40 822	32 671	24.9%

93 813



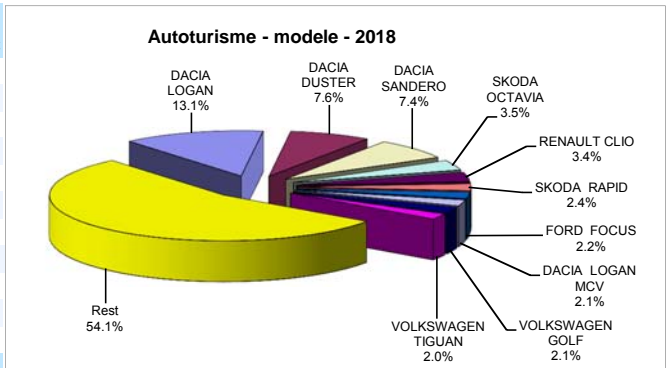
Top livrari autoturisme - marci / Passenger car top - by make

MARCA	Mai		Variatie Aprilie		2018		Variatie2017	
	pozitie	unitati	pozitie	procent	pozitie	unitati	pozitie	procent
DACIA	1	6171	1	38.2%	1	19223	1	59.2%
VOLKSWAGEN	3	1338	3	13.0%	2	5910	2	15.8%
SKODA	2	1520	2	19.8%	3	5529	3	39.5%
RENAULT	4	1178	4	0.1%	4	4368	4	26.0%
FORD	5	747	5	-21.1%	5	3770	5	25.1%
OPEL	6	719	8	49.2%	6	2494	6	30.0%
HYUNDAI	7	701	6	15.1%	7	2358	7	48.9%
SUZUKI	8	471	7	-6.9%	8	1738	12	85.9%
TOYOTA	9	440	9	9.2%	9	1696	9	18.9%
MERCEDES BENZ *)	11	328	12	7.5%	10	1588	8	6.0%
Rest		2522		12.0%		10592		
TOTAL		16135		18.6%		59266		35.3%



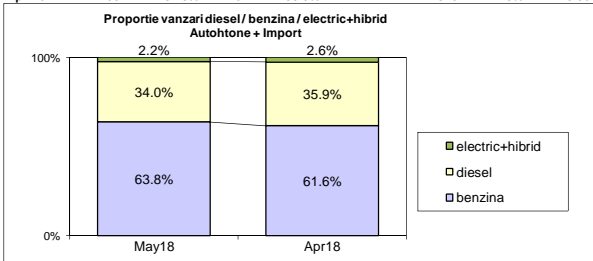
Top livrari autoturisme - modele / Passenger car top - by model

MODEL	Mai		Variatie Aprilie		2018		Variatie2017	
	pozitie	unitati	pozitie	procent	pozitie	unitati	pozitie	procent
DACIA LOGAN	1	2294	1	3.7%	1	7777	1	79.3%
DACIA DUSTER	3	1389	2	41.2%	2	4476	3	77.4%
DACIA SANDERO	2	1524	3	102.9%	3	4387	2	43.6%
SKODA OCTAVIA	6	550	5	19.6%	4	2096	4	17.8%
RENAULT CLIO	4	562	4	16.6%	5	2007	5	48.7%
SKODA RAPID	7	409	7	22.1%	6	1429	8	26.5%
FORD FOCUS	12	275	6	-28.9%	7	1325	7	14.7%
DACIA LOGAN MCV	5	550	27	354.6%	8	1252	6	5.1%
VOLKSWAGEN GOLF	14	260	20	71.1%	9	1238	12	27.0%
VOLKSWAGEN TIGUAN	17	242	15	5.2%	10	1199	9	6.4%
Rest		8080		7.9%		32080		
TOTAL		16135		18.6%		59266		35.3%

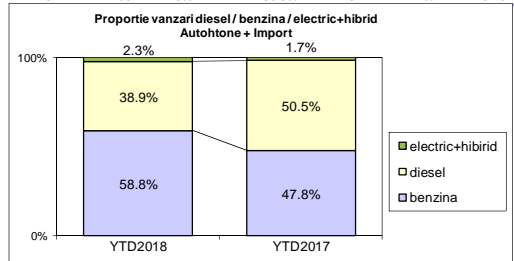


Autohtone + Import / Domestic + Imported

	benzina		diesel		electric+hibrid		total
May-18	10296	63.8%	5485	34.0%	354	2.2%	16 135
Apr-18	8374	61.6%	4877	35.9%	349	2.6%	13 600



	benzina		diesel		electric+hibrid		total
YTD2018	34862	58.8%	23032	38.9%	1372	2.3%	59 266
YTD2017	20942	47.8%	22124	50.5%	726	1.7%	43 792



Livrari autoturisme in functie de tipul de combustibil / Passenger car deliveries by fuel type

Luna/An	2018		Pondere		2017		Variatie 18/17	
	diesel	benzina	diesel	benzina	diesel	benzina	diesel	benzina
January	3 324	3 645	46.4%	50.9%	3 213	2 617	3.5%	39.3%
February	4 148	5 026	44.2%	53.6%	4 092	3 193	1.4%	57.4%
March	5 198	7 521	40.0%	57.9%	5 008	4 896	3.8%	53.6%
April	4 877	8 374	35.9%	61.6%	4 360	4 100	11.9%	104.2%
May	5 485	10 296	34.0%	63.8%	5 451	6 136	0.6%	67.8%
June	-	-	-	-	6 159	8 750	-	-
July	-	-	-	-	5 265	6 281	-	-
August	-	-	-	-	4 434	5 354	-	-
September	-	-	-	-	5 650	6 226	-	-
October	-	-	-	-	5 716	6 876	-	-
November	-	-	-	-	5 756	6 673	-	-
December	-	-	-	-	4 968	6 428	-	-
Total	23 032	34 862	38.9%	58.8%	22 124	20 942	4.1%	66.5%

Top Marci - Electrice (BEV, EREV, PHEV) si Hibrade (HEV)

MARCA	BEV+EREV+PHEV			HEV		
	2018	2017	Var. %	2018	2017	Var. %
VOLKSWAGEN	105	4	-	-	-	-
SMART *)	51	0	-	-	-	-
BMW	46	16	187.5%	-	-	-
MERCEDES BENZ *)	22	19	15.8%	16	2	-
RENAULT	16	1	-	-	-	-
VOLVO	15	4	275.0%	-	-	-
PORSCHE	8	3	166.7%	-	-	-
AUDI	6	8	-25.0%	23	0	-
TOYOTA	-	-	-	931	597	55.9%
LEXUS	-	-	-	46	52	-11.5%
FORD	-	-	-	25	1	-
Altele	19	5	280.0%	43	14	207.1%
TOTAL	288	60	380.0%	1084	666	62.8%

*) Estimari APIA / APIA Estimates

Top 10 Autoturisme in functie de tipul de alimentare - marci / Top 10 passenger car sales by fuel type and make

Top 10 diesel - marci

MARCA	Mai 2018	5 luni 2018	Pondere %	Variatie an precedent %	Pondere diesel/total
DACIA	2354	8537	37.1%	45.7%	44.4%
SKODA	613	2307	10.0%	-5.1%	41.7%
VOLKSWAGEN	417	2116	9.2%	-28.7%	35.8%
RENAULT	455	1828	7.9%	-1.8%	41.8%
FORD	255	1648	7.2%	0.0%	43.7%
MERCEDES BENZ *)	226	1164	5.1%	-3.6%	73.3%
BMW	168	783	3.4%	-7.1%	78.5%
NISSAN	114	629	2.7%	10.2%	45.1%
PEUGEOT	110	509	2.2%	-8.1%	47.7%
AUDI	106	503	2.2%	-26.2%	68.5%
Rest	667	3008	13.1%	-14.1%	-
TOTAL	5485	23032	100%	4.1%	38.9%

*) Estimari APIA / APIA Estimates

Top 10 benzina - marci

MARCA	Mai 2018	5 luni 2018	Pondere %	Variatie an precedent %	Pondere benzina/total
DACIA	3817	10686	30.7%	71.9%	55.6%
VOLKSWAGEN	912	3689	10.6%	73.0%	62.4%
SKODA	907	3222	9.2%	109.9%	58.3%
RENAULT	721	2524	7.2%	57.5%	57.8%
FORD	480	2097	6.0%	53.7%	55.6%
OPEL	611	2015	5.8%	36.1%	80.8%
HYUNDAI	632	2013	5.8%	91.5%	85.4%
SUZUKI	457	1666	4.8%	93.3%	95.9%
KIA	288	997	2.9%	74.9%	70.4%
NISSAN	191	763	2.2%	97.7%	54.7%
Rest	1279	5189	14.9%	38.7%	-
TOTAL	10296	34862	100%	66.5%	58.8%

*) Estimari APIA / APIA Estimates

Top 10 Autoturisme in functie de tipul de alimentare - modele / Top 10 passenger car sales by fuel type and model

Top 10 diesel - model

MODEL	Mai 2018	5 luni 2018	Pondere %	Variatie an precedent %	Pondere diesel/total
DACIA DUSTER	1223	3839	16.7%	94.0%	85.8%
DACIA LOGAN	532	2787	12.1%	78.3%	35.8%
SKODA OCTAVIA	256	1118	4.9%	-18.3%	53.3%
DACIA SANDERO	220	712	3.1%	-23.2%	16.2%
RENAULT CLIO	206	645	2.8%	21.5%	32.1%
RENAULT MEGANE	123	635	2.8%	-14.8%	56.2%
VOLKSWAGEN TIGUAN	125	614	2.7%	-38.3%	51.2%
FORD FOCUS	93	561	2.4%	18.9%	42.3%
DACIA LOGAN MCV	195	537	2.3%	-23.2%	42.9%
FORD KLUGA	59	528	2.3%	33.3%	73.8%
Rest	2453	11056	48.0%	-11.2%	-
TOTAL	5485	23032	100%	4.1%	38.9%

*) Estimari APIA / APIA Estimates

Top 10 benzina - model

MODEL	Mai 2018	5 luni 2018	Pondere %	Variatie an precedent %	Pondere benzina/total
DACIA LOGAN	1762	4990	14.3%	79.8%	64.2%
DACIA SANDERO	1304	3675	10.5%	72.7%	83.8%
RENAULT CLIO	356	1362	3.9%	66.3%	67.9%
SKODA RAPID	276	1020	2.9%	65.9%	71.4%
VOLKSWAGEN POLO	395	979	2.8%	21.6%	98.2%
SKODA OCTAVIA	294	978	2.8%	138.0%	46.7%
SUZUKI VITARA	270	943	2.7%	67.8%	96.5%
SKODA FABIA	218	902	2.6%	166.1%	95.4%
VOLKSWAGEN GOLF	176	849	2.4%	70.8%	68.6%
OPEL ASTRA	276	783	2.2%	12.3%	86.4%
Rest	4968	18380	52.7%	62.7%	-
TOTAL	10296	34862	100%	66.5%	58.8%

*) Estimari APIA / APIA Estimates

Distributia livrarilor dupa tipul de tractiune 4x4 / Deliveries breakdown on four wheel drive

Marca	YTD 2018		YTD 2017	Variatie 2018/2017 %
	unitati	pondere din total 4x4		
DACIA	3226	25.7%	2058	56.8%
MERCEDES BENZ *)	1191	9.5%	1083	10.0%
VOLKSWAGEN	1126	9.0%	1239	-9.1%
SUZUKI	1085	8.6%	707	53.5%
BMW	807	6.4%	818	-1.3%
SKODA	751	6.0%	352	113.4%
FORD	611	4.9%	472	29.4%
AUDI	481	3.8%	566	-15.0%
HYUNDAI	474	3.8%	368	28.8%
KIA	417	3.3%	251	66.1%
LAND ROVER	337	2.7%	496	-32.1%
MAZDA	288	2.3%	194	48.5%
JEEP	231	1.8%	176	31.3%
NISSAN	214	1.7%	182	17.6%
TOYOTA	202	1.6%	180	12.2%
Alte marci	1109	8.8%	1054	5.2%
TOTAL	12550	100.0%	10196	23.1%

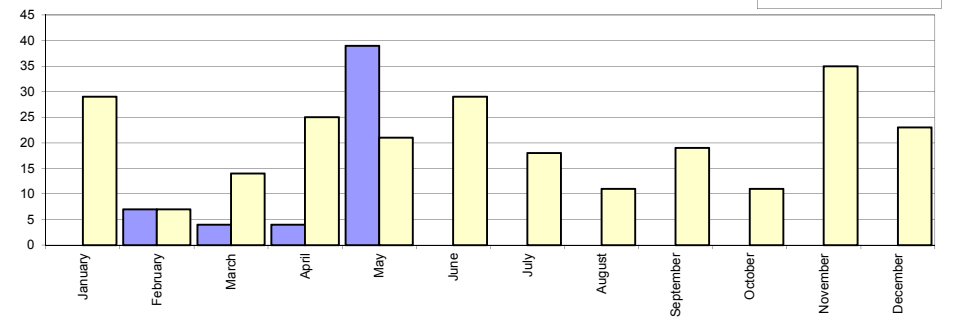
*) Estimari APIA / APIA Estimates

Livrarile comerciale usoare + minibus autohtone / Domestic LCV + minibus deliveries

Luna/An	2018	2017	Variatie
January	-	29	-
February	7	7	0.0%
March	4	14	-71.4%
April	4	25	-84.0%
May	39	21	85.7%
June	-	29	-
July	-	18	-
August	-	11	-
September	-	19	-
October	-	11	-
November	-	35	-
December	-	23	-
Total	54	67	-19.4%

242

Livrarile autohtone (buc)

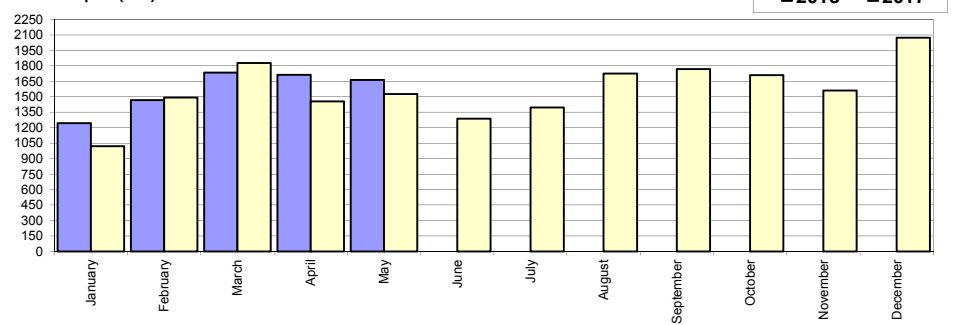


Livrarile comerciale usoare + minibus import / Imported LCV + minibus deliveries

Luna/An	2018	2017	Variatie
January	1 243	1 021	21.7%
February	1 469	1 492	-1.5%
March	1 734	1 827	-5.1%
April	1 712	1 454	17.7%
May	1 662	1 526	8.9%
June	-	1 287	-
July	-	1 395	-
August	-	1 725	-
September	-	1 769	-
October	-	1 710	-
November	-	1 562	-
December	-	2 073	-
Total	7 820	7 320	6.8%

18 841

Livrarile import (buc)

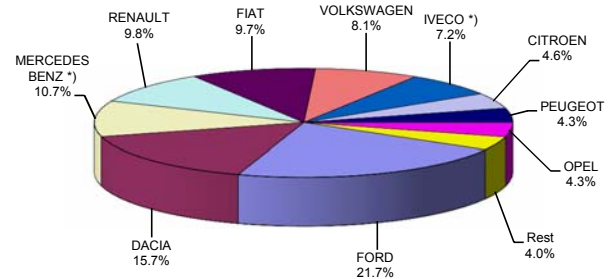


Livrarile comerciale <3.5t si minibus - marci / LCV + minibus sales by make

MARCA	Mai		Variatie Aprilie		2018		Variatie2017	
	pozitie	unitati	pozitie	procent	pozitie	unitati	pozitie	procent
FORD	1	326	1	-19.7%	1	1711	2	26.7%
DACIA	2	252	2	-4.2%	2	1238	1	-17.8%
MERCEDES BENZ *)	4	180	3	4.7%	3	840	3	-6.7%
RENAULT	5	178	5	8.5%	4	768	4	0.0%
FIAT	3	195	6	33.6%	5	762	6	24.5%
VOLKSWAGEN	6	178	4	6.0%	6	637	5	-6.9%
IVECO *)	7	146	7	36.5%	7	563	7	31.2%
CITROEN	10	51	8	-49.0%	8	365	10	55.3%
PEUGEOT	8	65	10	14.0%	9	337	8	12.7%
OPEL	9	63	9	-4.6%	10	335	9	17.5%
Rest		67		0.0%		318		
TOTAL		1701		-0.9%		7874		6.2%

*) Estimari APIA / APIA Estimates

Vanzari com <3.5t si minibus - marci - 2018



Livrarile comerciale <3.5t si minibus - modele / LCV + minibus sales by model

MODEL	Mai		Variatie Aprilie		2018		Variatie2017	
	pozitie	unitati	pozitie	procent	pozitie	unitati	pozitie	procent
DACIA DOKKER VAN	1	213	1	-17.8%	1	1184	1	-16.0%
FORD TRANSIT	3	149	2	-20.7%	2	862	2	13.3%
FIAT DUCATO	2	162	6	80.0%	3	581	3	32.7%
IVECO *) DAILY	4	145	3	35.5%	4	559	4	33.1%
RENAULT MASTER	5	117	4	21.9%	5	453	6	25.1%
CITROEN JUMPER	10	44	5	-52.2%	6	331	10	57.6%
MERCEDES BENZ *) SPRINTER	8	54	11	3.9%	7	303	5	-19.0%
PEUGEOT BOXER	7	58	13	34.9%	8	257	8	19.0%
MERCEDES BENZ *) SPRINTER BUS	6	62	14	51.2%	9	243	7	-11.3%
FORD RANGER	11	42	9	-23.6%	10	224	12	25.8%
Rest		655		-5.5%		2877		
TOTAL		1701		-0.9%		7874		6.2%

*) Estimari APIA / APIA Estimates

Vanzari com <3.5t si minibus - modele - 2018

