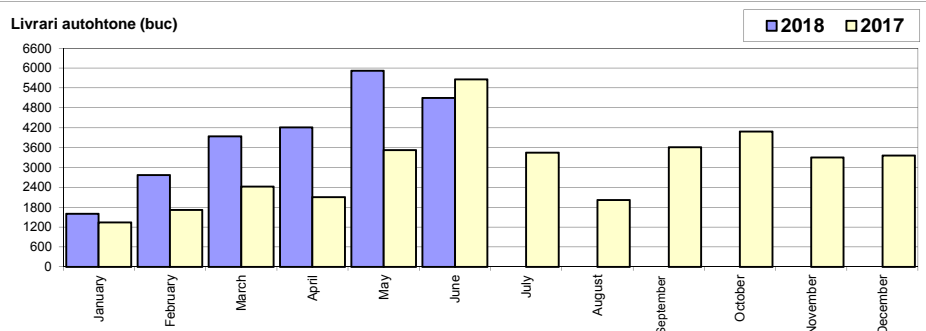


Livrari autoturisme autohtone / Domestic passenger car deliveries

Luna/An	2018	2017	Variatie
January	1 605	1 345	19.3%
February	2 771	1 722	60.9%
March	3 938	2 425	62.4%
April	4 212	2 102	100.4%
May	5 918	3 527	67.8%
June	5 095	5 659	-10.0%
July	-	3 446	-
August	-	2 013	-
September	-	3 614	-
October	-	4 085	-
November	-	3 306	-
December	-	3 357	-
Total	23 539	16 780	40.3%

36 601

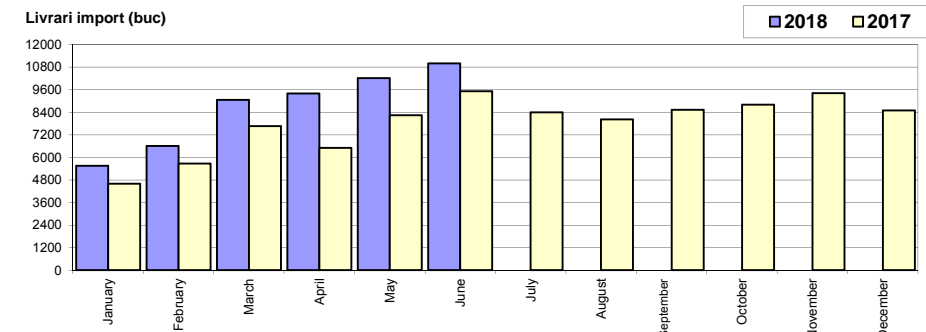


* Datele cuprind atat volumele Ford cat si Dacia / Data includes both Dacia and Ford deliveries.

Livrari autoturisme import / Imported passenger car deliveries

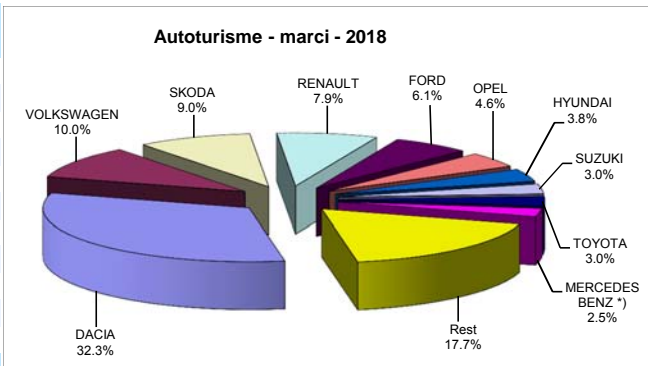
Luna/An	2018	2017	Variatie
January	5 559	4 598	20.9%
February	6 604	5 674	16.4%
March	9 054	7 662	18.2%
April	9 388	6 499	44.5%
May	10 217	8 238	24.0%
June	10 997	9 516	15.6%
July	-	8 392	-
August	-	8 011	-
September	-	8 527	-
October	-	8 802	-
November	-	9 407	-
December	-	8 487	-
Total	51 819	42 187	22.8%

93 813



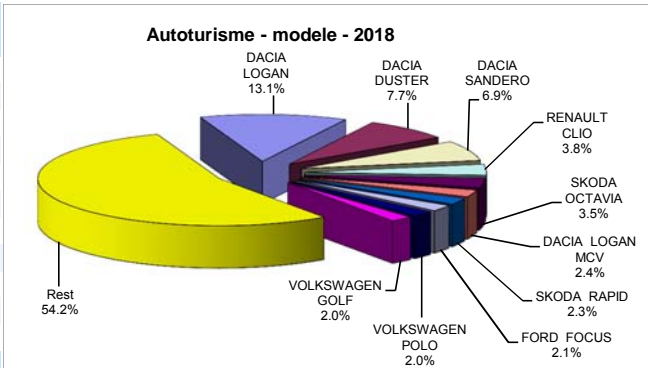
Top livrari autoturisme - marci / Passenger car top - by make

MARCA	Iunie		Variatie Mai		2018		Variatie 2017	
	pozitie	unitati	pozitie	procent	pozitie	unitati	pozitie	procent
DACIA	1	5130	1	-16.9%	1	24353	1	35.1%
VOLKSWAGEN	2	1643	3	22.8%	2	7553	2	16.2%
SKODA	4	1234	2	-18.8%	3	6763	3	29.2%
RENAULT	3	1606	4	36.3%	4	5974	4	29.7%
FORD	6	849	5	13.7%	5	4619	5	25.0%
OPEL	5	988	6	37.4%	6	3482	6	33.3%
HYUNDAI	8	534	7	-23.8%	7	2892	7	34.4%
SUZUKI	9	529	8	12.3%	8	2267	10	57.8%
TOYOTA	7	538	9	22.3%	9	2234	8	19.7%
MERCEDES BENZ *)	12	301	11	-8.2%	10	1889	9	6.5%
Rest		2740		8.6%		13332		-
TOTAL		16092		-0.3%		75358		27.8%



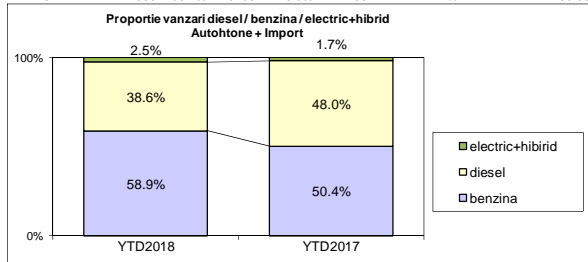
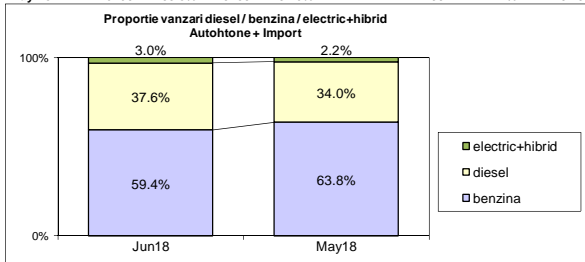
Top livrari autoturisme - modele / Passenger car top - by model

MODEL	Iunie		Variatie Mai		2018		Variatie 2017	
	pozitie	unitati	pozitie	procent	pozitie	unitati	pozitie	procent
DACIA LOGAN	1	2121	1	-7.5%	1	9898	1	37.9%
DACIA DUSTER	2	1352	3	-2.7%	2	5828	3	71.3%
DACIA SANDERO	4	818	2	-46.3%	3	5205	2	14.3%
RENAULT CLIO	3	819	4	45.7%	4	2826	5	59.9%
SKODA OCTAVIA	6	531	6	-3.5%	5	2627	4	18.0%
DACIA LOGAN MCV	5	550	5	0.0%	6	1802	6	10.7%
SKODA RAPID	12	288	7	-29.6%	7	1717	7	10.6%
FORD FOCUS	13	270	12	-1.8%	8	1595	9	18.8%
VOLKSWAGEN POLO	7	519	8	31.1%	9	1516	13	21.4%
VOLKSWAGEN GOLF	14	268	14	3.1%	10	1506	8	7.9%
Rest		8556		7.9%		40838		-
TOTAL		16092		-0.3%		75358		27.8%



	benzina	diesel	electric+hibrid	total
Jun-18	9560 59.4%	6052 37.6%	480 3.0%	16 092
May-18	10296 63.8%	5485 34.0%	354 2.2%	16 135

	benzina	diesel	electric+hibrid	total
YTD2018	44422 58.9%	29084 38.6%	1852 2.5%	75 358
YTD2017	29692 50.4%	28283 48.0%	992 1.7%	58 967



Livrari autoturisme in functie de tipul de combustibil / Passenger car deliveries by fuel type

Top Marci - Electrice (BEV, EREV, PHEV) si Hibride (HEV)

Luna/An	2018		Pondere		2017		Variatie 18/17	
	diesel	benzina	diesel	benzina	diesel	benzina	diesel	benzina
January	3 324	3 645	46.4%	50.9%	3 213	2 617	3.5%	39.3%
February	4 148	5 026	44.2%	53.6%	4 092	3 193	1.4%	57.4%
March	5 198	7 521	40.0%	57.9%	5 008	4 896	3.8%	53.6%
April	4 877	8 374	35.9%	61.6%	4 360	4 100	11.9%	104.2%
May	5 485	10 296	34.0%	63.8%	5 451	6 136	0.6%	67.8%
June	6 052	9 560	37.6%	59.4%	6 159	8 750	-1.7%	9.3%
July	-	-	-	-	5 265	6 281	-	-
August	-	-	-	-	4 434	5 354	-	-
September	-	-	-	-	5 650	6 226	-	-
October	-	-	-	-	5 716	6 876	-	-
November	-	-	-	-	5 756	6 673	-	-
December	-	-	-	-	4 968	6 428	-	-
Total	29 084	44 422	38.6%	58.9%	28 283	29 692	2.8%	49.6%

MARCA	BEV+EREV+PHEV			HEV			MARCA
	2018	2017	Var. %	2018	2017	Var. %	
VOLKSWAGEN	132	5	-	1282	791	62.1%	TOYOTA
BMW	82	29	182.8%	57	72	-20.8%	LEXUS
SMART *)	59	0	-	30	2	-	FORD
RENAULT	31	12	158.3%	23	0	-	AUDI
MERCEDES BENZ *)	26	32	-18.8%	22	8	175.0%	KIA
VOLVO	16	5	220.0%	18	1	-	HYUNDAI
MITSUBISHI	10	4	150.0%	16	2	-	MERCEDES BENZ *)
PORSCHE	10	4	150.0%	14	10	40.0%	SUZUKI
AUDI	9	8	12.5%	0	2	-100.0%	LAND ROVER
KIA	4	0	-	-	-	-	-
NISSAN	3	0	-	-	-	-	-
ALTE MARCI *)	8	5	60.0%	-	-	-	-
TOTAL	390	104	275.0%	1462	888	64.6%	TOTAL

*) Estimari APIA / APIA Estimates

Top 10 Autoturisme in functie de tipul de alimentare - marci / Top 10 passenger car sales by fuel type and make

Top 10 diesel - marci

MARCA	Iunie 2018	6 luni 2018	Pondere %	Variatie an precedent %	Pondere diesel/total
DACIA	2260	10797	37.1%	30.9%	44.3%
SKODA	607	2914	10.0%	0.0%	43.1%
VOLKSWAGEN	646	2762	9.5%	-23.5%	36.6%
RENAULT	763	2591	8.9%	6.3%	43.4%
FORD	331	1979	6.8%	-3.2%	42.8%
MERCEDES BENZ *)	231	1395	4.8%	0.0%	73.8%
BMW	209	992	3.4%	-6.0%	77.3%
NISSAN	169	798	2.7%	21.5%	43.8%
PEUGEOT	106	615	2.1%	-8.6%	46.2%
OPEL	117	596	2.0%	0.5%	17.1%
Rest	613	3645	12.5%	-21.6%	-
TOTAL	6052	29084	100%	2.8%	38.6%

*) Estimari APIA / APIA Estimates

Top 10 benzina - marci

MARCA	Iunie 2018	6 luni 2018	Pondere %	Variatie an precedent %	Pondere benzina/total
DACIA	2870	13556	30.5%	38.7%	55.7%
VOLKSWAGEN	970	4659	10.5%	61.5%	61.7%
SKODA	627	3849	8.7%	65.9%	56.9%
RENAULT	828	3352	7.5%	55.4%	56.1%
OPEL	871	2886	6.5%	42.9%	82.9%
FORD	513	2610	5.9%	58.5%	56.5%
HYUNDAI	447	2460	5.5%	71.0%	85.1%
SUZUKI	510	2176	4.9%	62.8%	96.0%
KIA	237	1234	2.8%	67.9%	70.6%
NISSAN	257	1020	2.3%	81.5%	56.0%
Rest	1430	6620	14.9%	37.4%	-
TOTAL	9560	44422	100%	49.6%	58.9%

*) Estimari APIA / APIA Estimates

Top 10 Autoturisme in functie de tipul de alimentare - modele / Top 10 passenger car sales by fuel type and model

Top 10 diesel - model

MODEL	Iunie 2018	6 luni 2018	Pondere %	Variatie an precedent %	Pondere diesel/total
DACIA DUSTER	1100	4939	17.0%	79.3%	84.7%
DACIA LOGAN	575	3362	11.6%	52.3%	34.0%
SKODA OCTAVIA	316	1434	4.9%	-13.6%	54.6%
RENAULT CLIO	505	1150	4.0%	74.0%	40.7%
DACIA SANDERO	160	872	3.0%	-39.7%	16.8%
DACIA LOGAN MCV	247	784	2.7%	-16.2%	43.5%
VOLKSWAGEN TIGUAN	130	744	2.6%	-32.5%	52.8%
RENAULT MEGANE	106	741	2.5%	-21.3%	53.3%
FORD FOCUS	118	679	2.3%	22.1%	42.6%
NISSAN QASHQAI	139	627	2.2%	27.4%	46.4%
Rest	2656	13752	47.3%	-11.4%	-
TOTAL	6052	29084	100%	2.8%	38.6%

*) Estimari APIA / APIA Estimates

Top 10 benzina - model

MODEL	Iunie 2018	6 luni 2018	Pondere %	Variatie an precedent %	Pondere benzina/total
DACIA LOGAN	1546	6536	14.7%	31.5%	66.0%
DACIA SANDERO	658	4333	9.8%	39.4%	83.2%
RENAULT CLIO	314	1676	3.8%	51.5%	59.3%
VOLKSWAGEN POLO	500	1479	3.3%	52.5%	97.6%
SUZUKI VITARA	300	1243	2.8%	48.5%	96.9%
SKODA RAPID	194	1214	2.7%	25.8%	70.7%
SKODA OCTAVIA	215	1193	2.7%	110.4%	45.4%
OPEL ASTRA	360	1143	2.6%	11.0%	88.3%
SKODA FABIA	149	1051	2.4%	91.1%	93.8%
DACIA LOGAN MCV	303	1018	2.3%	47.1%	56.5%
Rest	5021	23536	53.0%	58.0%	-
TOTAL	9560	44422	100%	49.6%	58.9%

*) Estimari APIA / APIA Estimates

Distributia livrarilor dupa tipul de tractiune 4x4 / Deliveries breakdown on four wheel drive

Marca	YTD 2018		YTD 2017	Variatie 2018/2017 %	
	unitati	pondere din total 4x4 marca			
DACIA	4223	26.9%	17.3%	2682	57.5%
MERCEDES BENZ *)	1430	9.1%	75.7%	1276	12.1%
VOLKSWAGEN	1420	9.0%	18.8%	1400	1.4%
SUZUKI	1389	8.8%	61.3%	1030	34.9%
BMW	1040	6.6%	81.1%	1021	1.9%
SKODA	920	5.9%	13.6%	475	93.7%
FORD	719	4.6%	15.6%	600	19.8%
HYUNDAI	576	3.7%	19.9%	457	26.0%
AUDI	566	3.6%	62.6%	697	-18.8%
KIA	505	3.2%	28.9%	329	53.5%
LAND ROVER	395	2.5%	100.0%	586	-32.6%
MAZDA	372	2.4%	32.9%	232	60.3%
NISSAN	266	1.7%	14.6%	207	28.5%
JEEP	265	1.7%	86.9%	198	33.8%
TOYOTA	262	1.7%	11.7%	227	15.4%
Alte marci	1375	8.7%	9.0%	1355	1.5%
TOTAL	15723	100.0%	20.9%	12772	23.1%

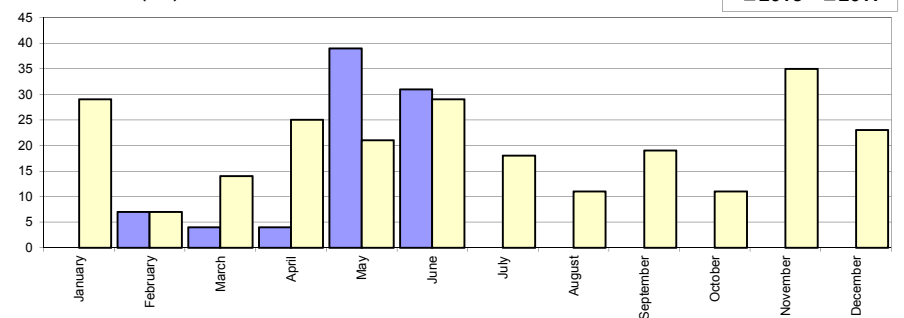
*) Estimari APIA / APIA Estimates

Livrarile comerciale usoare + minibus autohtone / Domestic LCV + minibus deliveries

Luna/An	2018	2017	Variatie
January	-	29	-
February	7	7	0.0%
March	4	14	-71.4%
April	4	25	-84.0%
May	39	21	85.7%
June	31	29	6.9%
July	-	18	-
August	-	11	-
September	-	19	-
October	-	11	-
November	-	35	-
December	-	23	-
Total	85	96	-11.5%

242

Livrarile autohtone (buc)

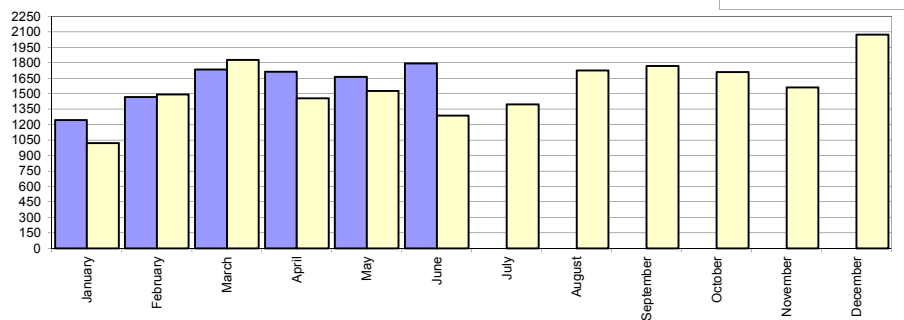


Livrarile comerciale usoare + minibus import / Imported LCV + minibus deliveries

Luna/An	2018	2017	Variatie
January	1 243	1 021	21.7%
February	1 469	1 492	-1.5%
March	1 734	1 827	-5.1%
April	1 712	1 454	17.7%
May	1 662	1 526	8.9%
June	1 794	1 287	39.4%
July	-	1 395	-
August	-	1 725	-
September	-	1 769	-
October	-	1 710	-
November	-	1 562	-
December	-	2 073	-
Total	9 614	8 607	11.7%

18 841

Livrarile import (buc)

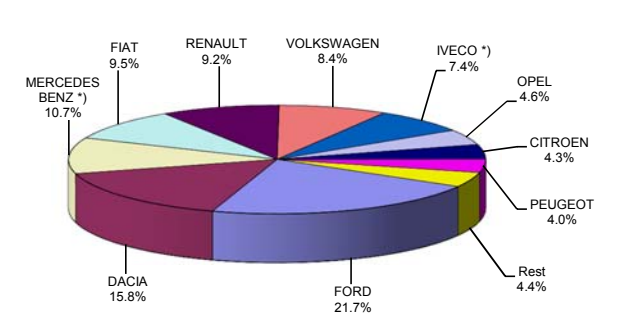


Livrarile comerciale <3.5t si minibus - marci / LCV + minibus sales by make

MARCA	Iunie		Variatie Mai		2018		Variatie 2017	
	pozitie	unitati	pozitie	procent	pozitie	unitati	pozitie	procent
FORD	1	391	1	19.9%	1	2102	2	28.3%
DACIA	2	290	2	15.1%	2	1528	1	-8.5%
MERCEDES BENZ *)	3	199	4	10.6%	3	1039	3	-2.1%
FIAT	5	156	3	-20.0%	4	918	6	30.0%
RENAULT	7	126	5	-29.2%	5	894	4	1.0%
VOLKSWAGEN	4	182	6	2.3%	6	819	5	0.5%
IVECO *)	6	155	7	6.2%	7	718	7	29.8%
OPEL	8	109	9	73.0%	8	444	9	29.8%
CITROEN	9	56	10	9.8%	9	421	10	45.2%
PEUGEOT	11	51	8	-21.5%	10	388	8	7.2%
Rest		110		64.2%		428		-
TOTAL		1825		7.3%		9699		11.1%

*) Estimari APIA / APIA Estimates

Vanzari com <3.5t si minibus - marci - 2018



Livrarile comerciale <3.5t si minibus - modele / LCV + minibus sales by model

MODEL	Iunie		Variatie Mai		2018		Variatie 2017	
	pozitie	unitati	pozitie	procent	pozitie	unitati	pozitie	procent
DACIA DOKKER VAN	1	259	1	21.6%	1	1443	1	-6.6%
FORD TRANSIT	2	220	3	47.7%	2	1082	2	16.1%
IVECO *) DAILY	3	150	4	3.5%	3	709	3	30.6%
FIAT DUCATO	5	102	2	-37.0%	4	683	4	29.6%
RENAULT MASTER	6	77	5	-34.2%	5	530	5	20.2%
CITROEN JUMPER	10	47	10	6.8%	6	378	10	44.8%
MERCEDES BENZ *) SPRINTER	9	50	8	-7.4%	7	353	6	-17.9%
MERCEDES BENZ *) SPRINTER BUS	4	105	6	69.4%	8	348	7	6.4%
PEUGEOT BOXER	14	36	7	-37.9%	9	293	8	8.1%
OPEL MOVANO	8	58	15	61.1%	10	257	23	116.0%
Rest		721		9.1%		3623		-
TOTAL		1825		7.3%		9699		11.1%

*) Estimari APIA / APIA Estimates

Vanzari com <3.5t si minibus - modele - 2018

