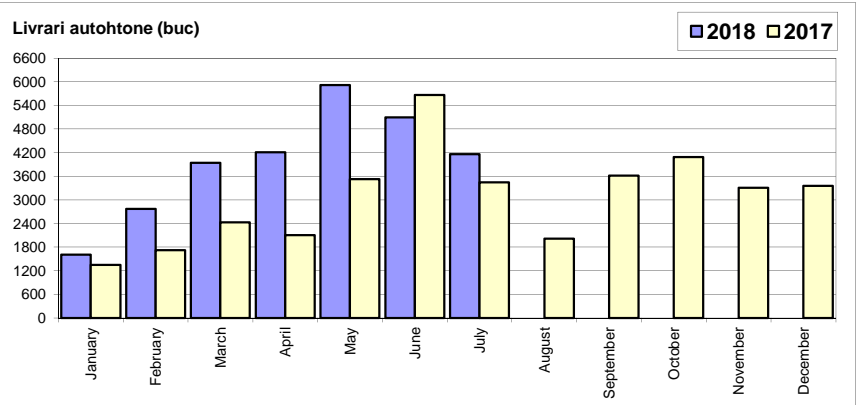


## Livrari autoturisme autohtone / Domestic passenger car deliveries

Luna/An	2018	2017	Variatie
January	1 605	1 345	19.3%
February	2 771	1 722	60.9%
March	3 938	2 425	62.4%
April	4 212	2 102	100.4%
May	5 918	3 527	67.8%
June	5 095	5 659	-10.0%
July	4 162	3 446	20.8%
August	-	2 013	-
September	-	3 614	-
October	-	4 085	-
November	-	3 306	-
December	-	3 357	-
<b>Total</b>	<b>27 701</b>	<b>20 226</b>	<b>37.0%</b>

36 601

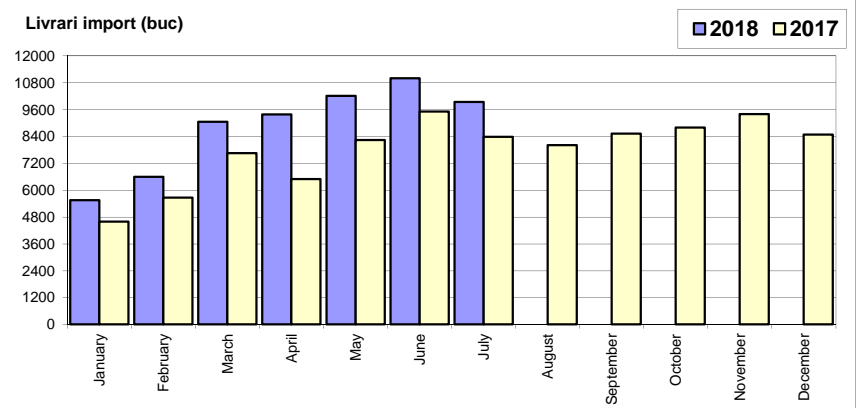


\* Datele cuprind atat volumele Ford cat si Dacia / Data includes both Dacia and Ford deliveries.

## Livrari autoturisme import / Imported passenger car deliveries

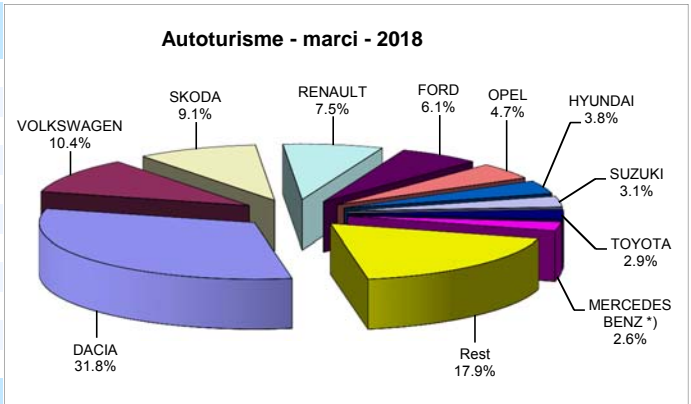
Luna/An	2018	2017	Variatie
January	5 559	4 598	20.9%
February	6 604	5 674	16.4%
March	9 054	7 662	18.2%
April	9 388	6 499	44.5%
May	10 217	8 238	24.0%
June	10 997	9 516	15.6%
July	9 949	8 392	18.6%
August	-	8 011	-
September	-	8 527	-
October	-	8 802	-
November	-	9 407	-
December	-	8 487	-
<b>Total</b>	<b>61 768</b>	<b>50 579</b>	<b>22.1%</b>

93 813



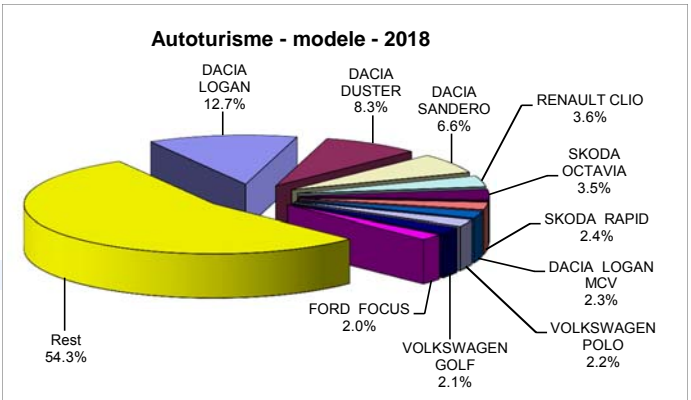
## Top livrari autoturisme - marci / Passenger car top - by make

MARCA	Iulie		Variatie lunie		2018		Variatie 2017	
	pozitie	unitati	pozitie	procent	pozitie	unitati	pozitie	procent
DACIA	1	4141	1	-19.3%	1	<b>28494</b>	1	31.6%
VOLKSWAGEN	2	1796	2	9.3%	2	<b>9349</b>	2	23.3%
SKODA	3	1335	4	8.2%	3	<b>8098</b>	3	27.5%
RENAULT	6	742	3	-53.8%	4	<b>6716</b>	4	18.9%
FORD	4	854	6	0.6%	5	<b>5473</b>	5	18.0%
OPEL	5	760	5	-23.1%	6	<b>4242</b>	6	29.3%
HYUNDAI	7	529	8	-0.9%	7	<b>3421</b>	7	34.2%
SUZUKI	8	501	9	-5.3%	8	<b>2768</b>	10	53.4%
TOYOTA	11	349	7	-35.1%	9	<b>2583</b>	8	12.6%
MERCEDES BENZ *)	10	395	12	31.2%	10	<b>2284</b>	9	8.4%
Rest		2709		-1.1%		<b>16041</b>		-
<b>TOTAL</b>		<b>14111</b>		<b>-12.3%</b>		<b>89469</b>		<b>26.4%</b>



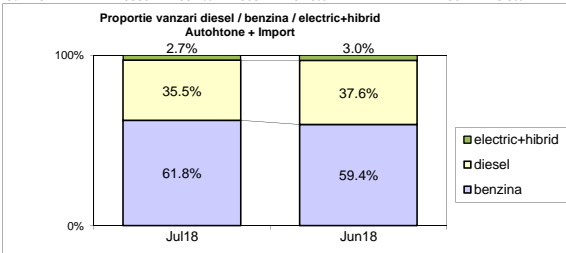
## Top livrari autoturisme - modele / Passenger car top - by model

MODEL	Iulie		Variatie lunie		2018		Variatie 2017	
	pozitie	unitati	pozitie	procent	pozitie	unitati	pozitie	procent
DACIA LOGAN	2	1460	1	-31.2%	1	<b>11358</b>	1	27.2%
DACIA DUSTER	1	1602	2	18.5%	2	<b>7430</b>	3	79.4%
DACIA SANDERO	3	659	4	-19.4%	3	<b>5864</b>	2	11.7%
RENAULT CLIO	8	399	3	-51.3%	4	<b>3225</b>	5	44.6%
SKODA OCTAVIA	4	498	6	-6.2%	5	<b>3125</b>	4	17.2%
SKODA RAPID	7	401	12	39.2%	6	<b>2118</b>	7	17.7%
DACIA LOGAN MCV	14	228	5	-58.6%	7	<b>2030</b>	6	7.6%
VOLKSWAGEN POLO	5	490	7	-5.6%	8	<b>2006</b>	12	35.7%
VOLKSWAGEN GOLF	6	414	14	54.5%	9	<b>1920</b>	10	18.1%
FORD FOCUS	15	223	13	-17.4%	10	<b>1818</b>	8	7.8%
Rest		7737		-9.6%		<b>48575</b>		-
<b>TOTAL</b>		<b>14111</b>		<b>-12.3%</b>		<b>89469</b>		<b>26.4%</b>

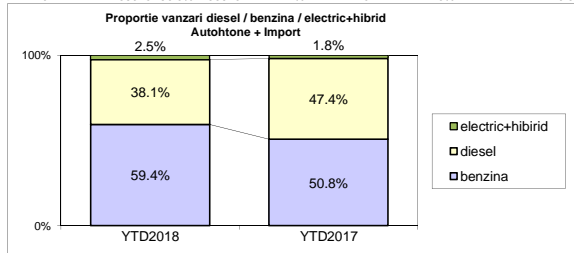


Autohtone + Import / Domestic + Imported

	benzina		diesel		electric+hibrid		total
Jul-18	8721	61.8%	5003	35.5%	387	2.7%	14 111
Jun-18	9560	59.4%	6052	37.6%	480	3.0%	16 092



	benzina		diesel		electric+hibrid		total
YTD2018	53143	59.4%	34087	38.1%	2239	2.5%	89 469
YTD2017	35973	50.8%	33548	47.4%	1284	1.8%	70 805



Livrari autoturisme in functie de tipul de combustibil / Passenger car deliveries by fuel type

Luna/An	2018		Pondere		2017		Variatie 18/17	
	diesel	benzina	diesel	benzina	diesel	benzina	diesel	benzina
January	3 324	3 645	46.4%	50.9%	3 213	2 617	3.5%	39.3%
February	4 148	5 026	44.2%	53.6%	4 092	3 193	1.4%	57.4%
March	5 198	7 521	40.0%	57.9%	5 008	4 896	3.8%	53.6%
April	4 877	8 374	35.9%	61.6%	4 360	4 100	11.9%	104.2%
May	5 485	10 296	34.0%	63.8%	5 451	6 136	0.6%	67.8%
June	6 052	9 560	37.6%	59.4%	6 159	8 750	-1.7%	9.3%
July	5 003	8 721	35.5%	61.8%	5 265	6 281	-5.0%	38.8%
August	-	-	-	-	4 434	5 354	-	-
September	-	-	-	-	5 650	6 226	-	-
October	-	-	-	-	5 716	6 876	-	-
November	-	-	-	-	5 756	6 673	-	-
December	-	-	-	-	4 968	6 428	-	-
<b>Total</b>	<b>34 087</b>	<b>53 143</b>	<b>38.1%</b>	<b>59.4%</b>	<b>33 548</b>	<b>35 973</b>	<b>1.6%</b>	<b>47.7%</b>

Top Marci - Electrice (BEV, EREV, PHEV) si Hibrice (HEV)

MARCA	BEV+EREV+PHEV			HEV			MARCA
	2018	2017	Var. %	2018	2017	Var. %	
VOLKSWAGEN	156	9	-	1526	1019	49.8%	TOYOTA
BMW	90	46	95.7%	67	88	-23.9%	LEXUS
SMART *)	73	0	-	33	0	-	AUDI
RENAULT	51	18	183.3%	33	2	-	FORD
MERCEDES BENZ *)	28	40	-30.0%	32	9	255.6%	KIA
KIA	20	1	-	27	3	-	HYUNDAI
VOLVO	19	5	280.0%	19	2	-	MERCEDES BENZ *)
PORSCHE	14	5	180.0%	17	10	70.0%	SUZUKI
MITSUBISHI	12	9	33.3%	0	2	-100.0%	LAND ROVER
ALTE MARCI *)	9	7	28.6%	-	-	-	-
AUDI	9	9	0.0%	-	-	-	-
Alte marci	4	0	-	-	-	-	-
<b>TOTAL</b>	<b>485</b>	<b>149</b>	<b>225.5%</b>	<b>1754</b>	<b>1135</b>	<b>54.5%</b>	<b>TOTAL</b>

\*) Estimari APIA / APIA Estimates

Top 10 Autoturisme in functie de tipul de alimentare - marci / Top 10 passenger car sales by fuel type and make

Top 10 diesel - marci

MARCA	Iulie 2018	7 luni 2018	Pondere %	Variatie an precedent %	Pondere diesel/total
DACIA	2056	12853	37.7%	29.0%	45.1%
SKODA	479	3393	10.0%	-4.8%	41.9%
VOLKSWAGEN	573	3335	9.8%	-18.7%	35.7%
RENAULT	274	2865	8.4%	1.2%	42.7%
FORD	289	2268	6.7%	-13.1%	41.4%
MERCEDES BENZ *)	276	1671	4.9%	2.2%	73.2%
BMW	138	1130	3.3%	-6.1%	77.5%
NISSAN	75	873	2.6%	15.9%	41.4%
AUDI	228	821	2.4%	-17.1%	69.6%
PEUGEOT	75	690	2.0%	-9.2%	43.6%
Rest	540	4188	12.3%	-18.4%	-
<b>TOTAL</b>	<b>5003</b>	<b>34087</b>	<b>100%</b>	<b>1.6%</b>	<b>38.1%</b>

\*) Estimari APIA / APIA Estimates

Top 10 benzina - marci

MARCA	Iulie 2018	7 luni 2018	Pondere %	Variatie an precedent %	Pondere benzina/total
DACIA	2085	15641	29.4%	33.9%	54.9%
VOLKSWAGEN	1199	5858	11.0%	68.6%	62.7%
SKODA	856	4705	8.9%	68.8%	58.1%
RENAULT	448	3800	7.2%	35.8%	56.6%
OPEL	672	3558	6.7%	36.6%	83.9%
FORD	562	3172	6.0%	56.6%	58.0%
HYUNDAI	449	2909	5.5%	69.6%	85.0%
SUZUKI	485	2661	5.0%	60.3%	96.1%
KIA	214	1448	2.7%	67.8%	70.4%
NISSAN	214	1234	2.3%	87.3%	58.5%
Rest	1537	8157	15.3%	43.0%	-
<b>TOTAL</b>	<b>8721</b>	<b>53143</b>	<b>100%</b>	<b>47.7%</b>	<b>59.4%</b>

\*) Estimari APIA / APIA Estimates

Top 10 Autoturisme in functie de tipul de alimentare - modele / Top 10 passenger car sales by fuel type and model

Top 10 diesel - model

MODEL	Iulie 2018	7 luni 2018	Pondere %	Variatie an precedent %	Pondere diesel/total
DACIA DUSTER	1215	6154	18.1%	83.7%	82.8%
DACIA LOGAN	394	3756	11.0%	32.1%	33.1%
SKODA OCTAVIA	229	1663	4.9%	-16.1%	53.2%
RENAULT CLIO	113	1263	3.7%	55.5%	39.2%
DACIA SANDERO	119	991	2.9%	-38.7%	16.9%
DACIA LOGAN MCV	177	961	2.8%	-13.3%	47.3%
VOLKSWAGEN TIGUAN	141	885	2.6%	-26.9%	51.0%
RENAULT MEGANE	74	815	2.4%	-23.3%	51.9%
FORD FOCUS	67	746	2.2%	7.5%	41.0%
VOLKSWAGEN PASSAT	136	740	2.2%	-16.7%	67.5%
Rest	2338	16113	47.3%	-10.4%	-
<b>TOTAL</b>	<b>5003</b>	<b>34087</b>	<b>100%</b>	<b>1.6%</b>	<b>38.1%</b>

\*) Estimari APIA / APIA Estimates

Top 10 benzina - model

MODEL	Iulie 2018	7 luni 2018	Pondere %	Variatie an precedent %	Pondere benzina/total
DACIA LOGAN	1066	7602	14.3%	25.0%	66.9%
DACIA SANDERO	540	4873	9.2%	34.2%	83.1%
VOLKSWAGEN POLO	488	1967	3.7%	65.3%	98.1%
RENAULT CLIO	286	1962	3.7%	38.3%	60.8%
SUZUKI VITARA	321	1564	2.9%	51.8%	97.1%
SKODA RAPID	290	1504	2.8%	35.0%	71.0%
SKODA OCTAVIA	269	1462	2.8%	114.1%	46.8%
OPEL ASTRA	244	1387	2.6%	5.6%	89.8%
DACIA DUSTER	387	1276	2.4%	61.3%	17.2%
SKODA FABIA	215	1266	2.4%	80.6%	94.4%
Rest	4615	28280	53.2%	57.0%	-
<b>TOTAL</b>	<b>8721</b>	<b>53143</b>	<b>100%</b>	<b>47.7%</b>	<b>59.4%</b>

\*) Estimari APIA / APIA Estimates

Distributia livrarilor dupa tipul de tractiune 4x4 / Deliveries breakdown on four wheel drive

Marca	unitati	YTD 2018 pondere		YTD 2017 unitati	Variatie 2018/2017 %
		din total 4x4	din total marca		
DACIA	5275	27.8%	18.5%	3213	64.2%
MERCEDES BENZ *)	1731	9.1%	75.8%	1509	14.7%
VOLKSWAGEN	1711	9.0%	18.3%	1568	9.1%
SUZUKI	1705	9.0%	61.6%	1287	32.5%
BMW	1188	6.3%	81.5%	1176	1.0%
SKODA	1029	5.4%	12.7%	593	73.5%
FORD	851	4.5%	15.5%	759	12.1%
AUDI	761	4.0%	64.5%	755	0.8%
HYUNDAI	695	3.7%	20.3%	555	25.2%
KIA	573	3.0%	27.9%	387	48.1%
LAND ROVER	442	2.3%	100.0%	683	-35.3%
MAZDA	418	2.2%	32.1%	286	46.2%
TOYOTA	312	1.6%	12.1%	277	12.6%
JEEP	302	1.6%	82.7%	236	28.0%
NISSAN	302	1.6%	14.3%	243	24.3%
Alte marci	1665	8.8%	9.2%	1529	8.9%
<b>TOTAL</b>	<b>18960</b>	<b>100.0%</b>	<b>21.2%</b>	<b>15056</b>	<b>25.9%</b>

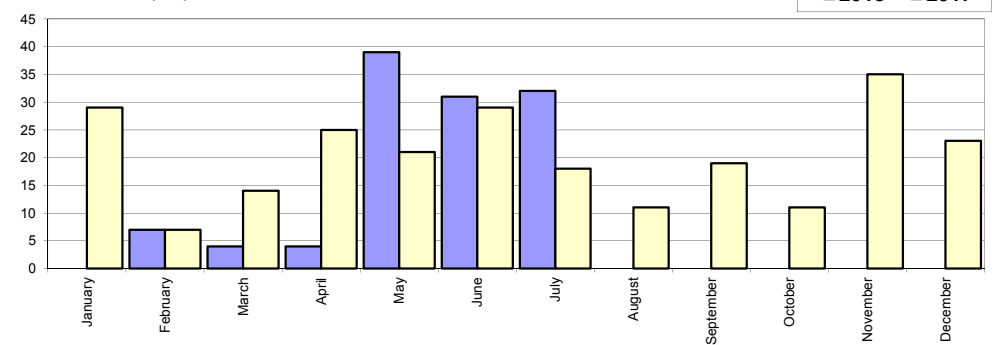
\*) Estimari APIA / APIA Estimates

## Livrarile comerciale usoare + minibus autohtone / Domestic LCV + minibus deliveries

Luna/An	2018	2017	Variatie
January	-	29	-
February	7	7	0.0%
March	4	14	-71.4%
April	4	25	-84.0%
May	39	21	85.7%
June	31	29	6.9%
July	32	18	77.8%
August	-	11	-
September	-	19	-
October	-	11	-
November	-	35	-
December	-	23	-
<b>Total</b>	<b>117</b>	<b>114</b>	<b>2.6%</b>

242

Livrarile autohtone (buc)

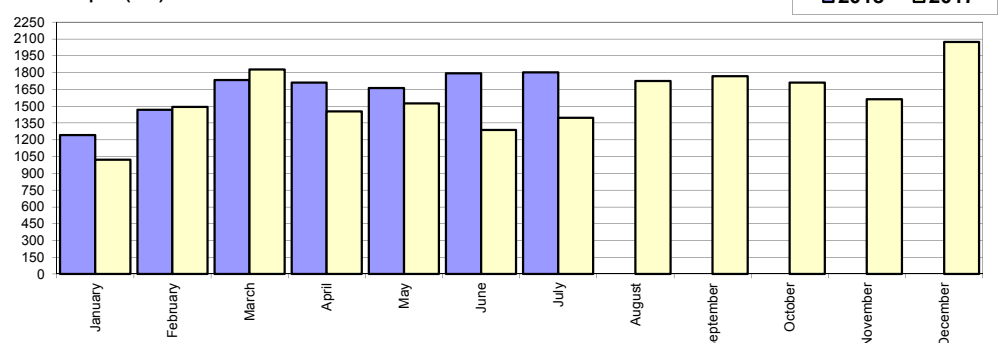


## Livrarile comerciale usoare + minibus import / Imported LCV + minibus deliveries

Luna/An	2018	2017	Variatie
January	1 243	1 021	21.7%
February	1 469	1 492	-1.5%
March	1 734	1 827	-5.1%
April	1 712	1 454	17.7%
May	1 662	1 526	8.9%
June	1 794	1 287	39.4%
July	1 801	1 395	29.1%
August	-	1 725	-
September	-	1 769	-
October	-	1 710	-
November	-	1 562	-
December	-	2 073	-
<b>Total</b>	<b>11 415</b>	<b>10 002</b>	<b>14.1%</b>

18 841

Livrarile import (buc)

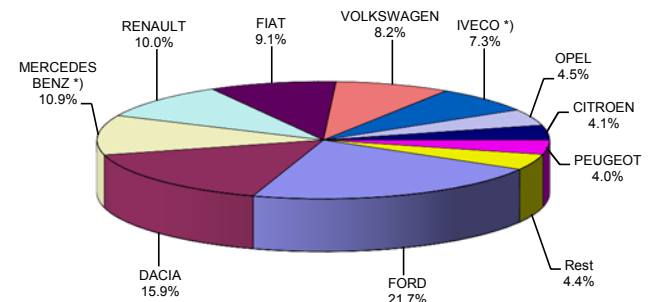


## Livrarile comerciale &lt;3.5t si minibus - marci / LCV + minibus sales by make

MARCA	Iulie		Variatie lunie			2018		Variatie 2017	
	pozitie	unitati	pozitie	procent	pozitie	unitati	pozitie	procent	
FORD	1	397	1	1.5%	1	2499	1	25.8%	
DACIA	2	305	2	5.2%	2	1833	2	0.1%	
MERCEDES BENZ *)	4	223	3	12.1%	3	1262	3	1.1%	
RENAULT	3	256	7	103.2%	4	1150	4	9.3%	
FIAT	6	130	5	-16.7%	5	1048	6	19.9%	
VOLKSWAGEN	5	130	4	-28.6%	6	949	5	4.8%	
IVECO *)	7	121	6	-21.9%	7	839	7	30.1%	
OPEL	8	75	8	-31.2%	8	519	9	32.7%	
CITROEN	10	50	9	-10.7%	9	471	10	41.9%	
PEUGEOT	9	69	11	35.3%	10	457	8	12.8%	
Rest		77		-30.0%		505		-	
<b>TOTAL</b>		<b>1833</b>		<b>0.4%</b>		<b>11532</b>		<b>13.7%</b>	

\*) Estimari APIA / APIA Estimates

Vanzari com &lt;3.5t si minibus - marci - 2018



## Livrarile comerciale &lt;3.5t si minibus - modele / LCV + minibus sales by model

MODEL	Iulie		Variatie lunie			2018		Variatie 2017	
	pozitie	unitati	pozitie	procent	pozitie	unitati	pozitie	procent	
DACIA DOKKER VAN	1	273	1	5.4%	1	1716	1	1.6%	
FORD TRANSIT	2	196	2	-10.9%	2	1278	2	13.9%	
IVECO *) DAILY	4	121	3	-19.3%	3	830	4	31.1%	
FIAT DUCATO	5	116	5	13.7%	4	799	3	20.7%	
RENAULT MASTER	3	156	6	102.6%	5	686	5	31.7%	
MERCEDES BENZ *) SPRINTER	6	107	9	114.0%	6	460	6	-7.8%	
CITROEN JUMPER	10	47	10	0.0%	7	425	9	42.6%	
MERCEDES BENZ *) SPRINTER BUS	7	77	4	-26.7%	8	425	7	10.7%	
PEUGEOT BOXER	11	44	14	22.2%	9	337	8	9.4%	
OPEL MOVANO	14	39	8	-32.8%	10	296	20	108.5%	
Rest		657		-8.9%		4280		-	
<b>TOTAL</b>		<b>1833</b>		<b>0.4%</b>		<b>11532</b>		<b>13.7%</b>	

\*) Estimari APIA / APIA Estimates

Vanzari com &lt;3.5t si minibus - modele - 2018

