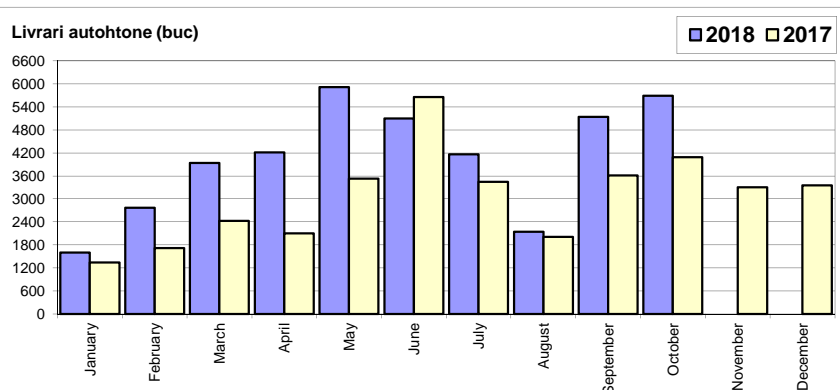


## Livrarile autoturismelor autohtone / Domestic passenger car deliveries

Luna/An	2018	2017	Variatie
January	1 605	1 345	19.3%
February	2 771	1 722	60.9%
March	3 938	2 425	62.4%
April	4 212	2 102	100.4%
May	5 918	3 527	67.8%
June	5 095	5 659	-10.0%
July	4 162	3 446	20.8%
August	2 147	2 013	6.7%
September	5 141	3 614	42.3%
October	5 695	4 085	39.4%
November	-	3 306	-
December	-	3 357	-
<b>Total</b>	<b>40 684</b>	<b>29 938</b>	<b>35.9%</b>

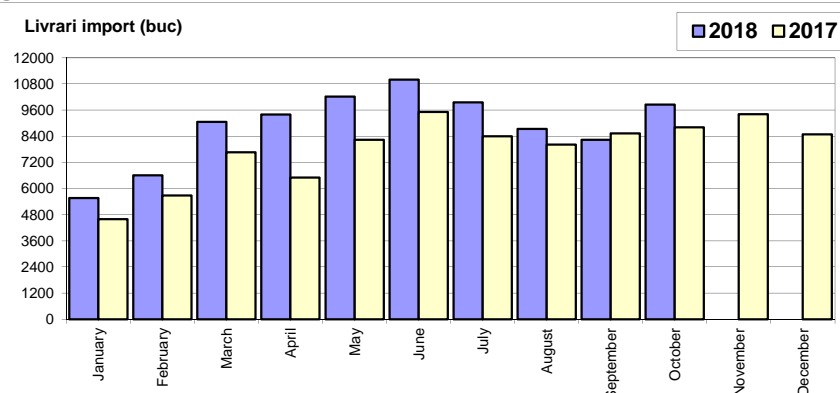


36 601

\* Datele cuprind atat volumele Ford cat si Dacia / Data includes both Dacia and Ford deliveries.

## Livrarile autoturismelor import / Imported passenger car deliveries

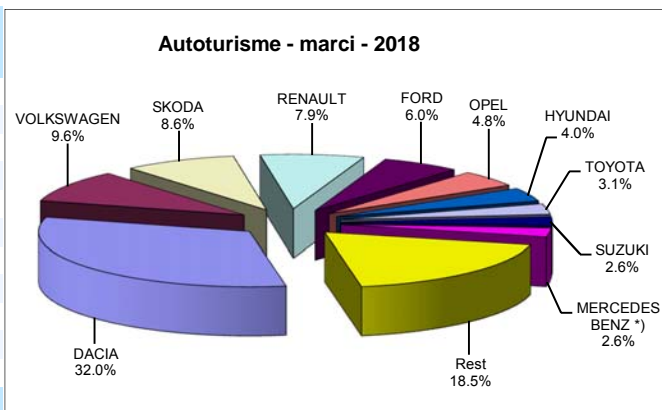
Luna/An	2018	2017	Variatie
January	5 559	4 598	20.9%
February	6 604	5 674	16.4%
March	9 054	7 662	18.2%
April	9 388	6 499	44.5%
May	10 217	8 238	24.0%
June	10 997	9 516	15.6%
July	9 949	8 392	18.6%
August	8 738	8 011	9.1%
September	8 232	8 527	-3.5%
October	9 852	8 802	11.9%
November	-	9 407	-
December	-	8 487	-
<b>Total</b>	<b>88 590</b>	<b>75 919</b>	<b>16.7%</b>



93 813

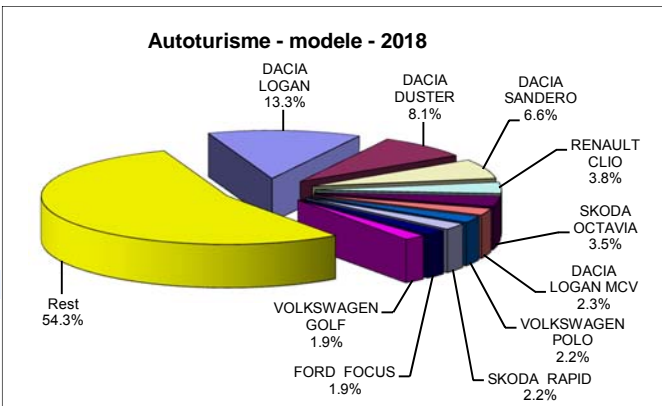
## Top livrarile autoturismelor - marti / Passenger car top - by make

MARCA	Variatie		2018	Variatie2017				
	Octombrie	Septembrie						
	pozitie	unitati	pozitie	procent	pozitie	unitati	pozitie	procent
DACIA	1	5593	1	11.3%	1	<b>41374</b>	1	28.7%
VOLKSWAGEN	4	1235	5	70.8%	2	<b>12426</b>	2	9.1%
SKODA	3	1242	3	27.7%	3	<b>11165</b>	3	17.1%
RENAULT	2	1585	2	31.2%	4	<b>10266</b>	4	19.4%
FORD	5	860	4	15.1%	5	<b>7808</b>	5	12.4%
OPEL	8	534	6	-25.1%	6	<b>6248</b>	6	22.1%
HYUNDAI	6	764	7	21.3%	7	<b>5210</b>	7	45.7%
TOYOTA	7	666	9	69.9%	8	<b>4024</b>	8	19.6%
SUZUKI	10	360	17	221.4%	9	<b>3407</b>	10	26.4%
MERCEDES BENZ *)	11	321	10	-8.6%	10	<b>3384</b>	9	9.5%
Rest		2387		-4.4%		<b>23962</b>		23.6%
<b>TOTAL</b>		<b>15547</b>		<b>16.3%</b>		<b>129274</b>		<b>22.1%</b>



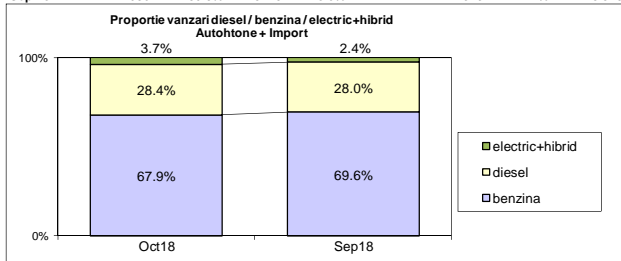
## Top livrarile autoturismelor - modele / Passenger car top - by model

MODEL	Variatie		2018	Variatie2017				
	Octombrie	Septembrie						
	pozitie	unitati	pozitie	procent	pozitie	unitati	pozitie	procent
DACIA LOGAN	1	2866	1	23.2%	1	<b>17227</b>	1	30.2%
DACIA DUSTER	2	1548	3	88.1%	2	<b>10416</b>	3	54.4%
DACIA SANDERO	4	731	2	-46.8%	3	<b>8512</b>	2	19.9%
RENAULT CLIO	3	808	4	58.1%	4	<b>4858</b>	5	50.8%
SKODA OCTAVIA	5	583	6	29.3%	5	<b>4489</b>	4	11.0%
DACIA LOGAN MCV	8	327	7	-16.8%	6	<b>2922</b>	6	3.1%
VOLKSWAGEN POLO	7	411	10	62.5%	7	<b>2872</b>	13	48.5%
SKODA RAPID	10	269	13	18.0%	8	<b>2851</b>	10	13.2%
FORD FOCUS	9	302	15	39.2%	9	<b>2506</b>	8	-2.3%
VOLKSWAGEN GOLF	13	247	25	128.7%	10	<b>2467</b>	7	-6.9%
Rest		7455		11.5%		<b>70154</b>		18.9%
<b>TOTAL</b>		<b>15547</b>		<b>16.3%</b>		<b>129274</b>		<b>22.1%</b>

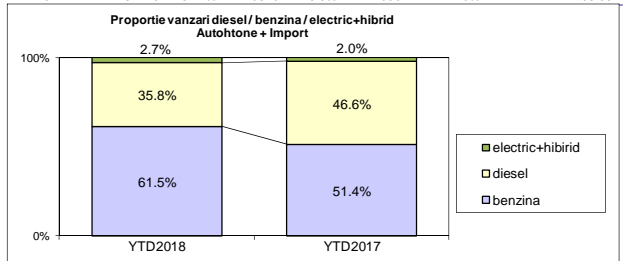


Segmentare dupa tipul de combustibil / Segmentation by type of fuel  
Autohtone + Import / Domestic + Imported

	benzina		diesel		electric+hibrid		total
Oct-18	10553	67.9%	4412	28.4%	582	3.7%	15 547
Sep-18	9304	69.6%	3746	28.0%	323	2.4%	13 373



	benzina		diesel		electric+hibrid		total
YTD2018	79515	61.5%	46251	35.8%	3508	2.7%	129 274
YTD2017	54429	51.4%	49348	46.6%	2080	2.0%	105 857



## Livrari autoturisme in functie de tipul de combustibil / Passenger car deliveries by fuel type

Luna/An	2018		Pondere		2017		Variatie 18/17	
	diesel	benzina	diesel	benzina	diesel	benzina	diesel	benzina
January	3 327	3 644	46.4%	50.9%	3 213	2 617	3.5%	39.2%
February	4 151	5 028	44.3%	53.6%	4 092	3 193	1.4%	57.5%
March	5 200	7 522	40.0%	57.9%	5 008	4 896	3.8%	53.6%
April	4 880	8 373	35.9%	61.6%	4 360	4 100	11.9%	104.2%
May	5 488	10 300	34.0%	63.8%	5 451	6 136	0.7%	67.9%
June	6 052	9 557	37.6%	59.4%	6 159	8 750	-1.7%	9.2%
July	5 008	8 727	35.5%	61.8%	5 265	6 281	-4.9%	38.9%
August	3 987	6 507	36.6%	59.8%	4 434	5 354	-10.1%	21.5%
September	3 746	9 304	28.0%	69.6%	5 650	6 226	-33.7%	49.4%
October	4 412	10 553	28.4%	67.9%	5 716	6 876	-22.8%	53.5%
November	-	-	-	-	5 762	6 673	-	-
December	-	-	-	-	4 971	6 428	-	-
<b>Total</b>	<b>46 251</b>	<b>79 515</b>	<b>35.8%</b>	<b>61.5%</b>	<b>49 348</b>	<b>54 429</b>	<b>-6.3%</b>	<b>46.1%</b>

## Top Marci - Electrice (BEV, EREV, PHEV) si Hibrade (HEV)

MARCA	BEV+EREV+PHEV			HEV			MARCA
	2018	2017	Var. %	2018	2017	Var. %	
VOLKSWAGEN	206	40	415.0%	2477	1595	55.3%	TOYOTA
BMW	140	97	44.3%	98	128	-23.4%	LEXUS
SMART *)	101	4	-	51	3	-	FORD
RENAULT	71	36	97.2%	51	18	183.3%	KIA
KIA	43	6	-	48	15	220.0%	HYUNDAI
VOLVO	34	8	325.0%	24	16	50.0%	SUZUKI
PORSCHE	33	9	266.7%	18	2	-	MERCEDES BENZ *)
MERCEDES BENZ *)	31	54	-42.6%	1	2	-50.0%	LAND ROVER
NISSAN	28	0	-	-	-	-	-
mitsubishi	26	24	8.3%	-	-	-	-
AUDI	9	14	-35.7%	-	-	-	-
ALTE MARCI	18	9	100.0%	-	-	-	-
<b>TOTAL</b>	<b>740</b>	<b>301</b>	<b>145.8%</b>	<b>2768</b>	<b>1779</b>	<b>55.6%</b>	<b>TOTAL</b>

\*) Estimari APIA / APIA Estimates

## Top 10 Autoturisme in functie de tipul de alimentare - marci / Top 10 passenger car sales by fuel type and make

## Top 10 diesel - marci

MARCA	Octombrie 2018	10 luni 2018	Pondere %	Variatie an precedent %	Pondere diesel/total
DACIA	1706	16646	36.0%	11.1%	40.2%
SKODA	452	4736	10.2%	-7.6%	42.4%
VOLKSWAGEN	439	4513	9.8%	-22.9%	36.3%
RENAULT	359	3973	8.6%	-7.8%	38.7%
FORD	251	3098	6.7%	-23.3%	39.7%
MERCEDES BENZ *)	243	2488	5.4%	5.2%	73.5%
BMW	139	1478	3.2%	-16.2%	74.7%
NISSAN	111	1246	2.7%	-1.0%	40.5%
AUDI	87	1179	2.5%	-15.9%	72.9%
PEUGEOT	73	1015	2.2%	-10.8%	43.0%
Rest	552	5879	12.7%	-17.3%	-
<b>TOTAL</b>	<b>4412</b>	<b>46251</b>	<b>100%</b>	<b>-6.3%</b>	<b>35.8%</b>

\*) Estimari APIA / APIA Estimates

## Top 10 benzina - marci

MARCA	Octombrie 2018	10 luni 2018	Pondere %	Variatie an precedent %	Pondere benzina/total
DACIA	3887	24728	31.1%	44.0%	59.8%
VOLKSWAGEN	772	7707	9.7%	40.3%	62.0%
SKODA	790	6429	8.1%	45.8%	57.6%
RENAULT	1216	6222	7.8%	46.1%	60.6%
OPEL	484	5329	6.7%	27.2%	85.3%
FORD	602	4659	5.9%	60.2%	59.7%
HYUNDAI	641	4382	5.5%	78.8%	84.1%
SUZUKI	345	3272	4.1%	30.4%	96.0%
FIAT	404	2702	3.4%	119.5%	92.3%
KIA	181	2003	2.5%	48.5%	69.2%
Rest	1231	12082	15.2%	42.7%	-
<b>TOTAL</b>	<b>10553</b>	<b>79515</b>	<b>100%</b>	<b>46.1%</b>	<b>61.5%</b>

\*) Estimari APIA / APIA Estimates

## Top 10 Autoturisme in functie de tipul de alimentare - modele / Top 10 passenger car sales by fuel type and model

## Top 10 diesel - model

MODEL	Octombrie 2018	10 luni 2018	Pondere %	Variatie an precedent %	Pondere diesel/total
DACIA DUSTER	1260	8299	17.9%	54.0%	79.7%
DACIA LOGAN	254	4531	9.8%	2.1%	26.3%
SKODA OCTAVIA	284	2407	5.2%	-14.5%	53.6%
RENAULT CLIO	161	1719	3.7%	43.3%	35.4%
DACIA SANDERO	76	1337	2.9%	-32.4%	15.7%
DACIA LOGAN MCV	49	1198	2.6%	-24.4%	41.0%
VOLKSWAGEN TIGUAN	78	1138	2.5%	-31.9%	52.8%
RENAULT MEGANE	137	1125	2.4%	-25.7%	46.2%
VOLKSWAGEN PASSAT	114	991	2.1%	-16.9%	71.0%
FORD KUGA	54	981	2.1%	-11.6%	71.8%
Rest	1945	22525	48.7%	-14.9%	-
<b>TOTAL</b>	<b>4412</b>	<b>46251</b>	<b>100%</b>	<b>-6.3%</b>	<b>35.8%</b>

\*) Estimari APIA / APIA Estimates

## Top 10 benzina - model

MODEL	Octombrie 2018	10 luni 2018	Pondere %	Variatie an precedent %	Pondere benzina/total
DACIA LOGAN	2612	12696	16.0%	44.3%	73.7%
DACIA SANDERO	655	7175	9.0%	40.1%	84.3%
RENAULT CLIO	647	3139	3.9%	55.3%	64.6%
VOLKSWAGEN POLO	377	2730	3.4%	77.9%	95.1%
OPEL ASTRA	256	2144	2.7%	2.1%	90.0%
SKODA RAPID	261	2122	2.7%	35.5%	74.4%
DACIA DUSTER	288	2117	2.7%	55.8%	20.3%
SKODA OCTAVIA	299	2082	2.6%	69.4%	46.4%
SUZUKI VITARA	149	1812	2.3%	16.5%	97.1%
DACIA LOGAN MCV	278	1724	2.2%	38.1%	59.0%
Rest	4731	41774	52.5%	49.7%	-
<b>TOTAL</b>	<b>10553</b>	<b>79515</b>	<b>100%</b>	<b>46.1%</b>	<b>61.5%</b>

\*) Estimari APIA / APIA Estimates

## Distributia livrarilor dupa tipul de tractiune 4x4 / Deliveries breakdown on four wheel drive

Marca	YTD 2018			YTD 2017	Variatie 2018/2017 %
	unitati	pondere			
		din total 4x4	din total marca	unitati	%
DACIA	7280	28.0%	17.6%	5097	42.8%
MERCEDES BENZ *)	2581	9.9%	76.3%	2170	18.9%
VOLKSWAGEN	2275	8.7%	18.3%	2356	-3.4%
SUZUKI	2034	7.8%	59.7%	1870	8.8%
BMW	1602	6.2%	81.0%	1750	-8.5%
HYUNDAI	1202	4.6%	23.1%	779	54.3%
SKODA	1173	4.5%	10.5%	929	26.3%
FORD	1153	4.4%	14.8%	1158	-0.4%
AUDI	1036	4.0%	64.1%	1098	-5.6%
KIA	844	3.2%	29.2%	482	75.1%
LAND ROVER	608	2.3%	100.0%	946	-35.7%
MAZDA	565	2.2%	30.8%	485	16.5%
TOYOTA	462	1.8%	11.5%	433	6.7%
VOLVO	427	1.6%	80.6%	251	70.1%
JEEP	418	1.6%	74.0%	393	6.4%
Alte marci	2367	9.1%	-	2293	3.2%
<b>TOTAL</b>	<b>26027</b>	<b>100.0%</b>	<b>20.1%</b>	<b>22490</b>	<b>15.7%</b>

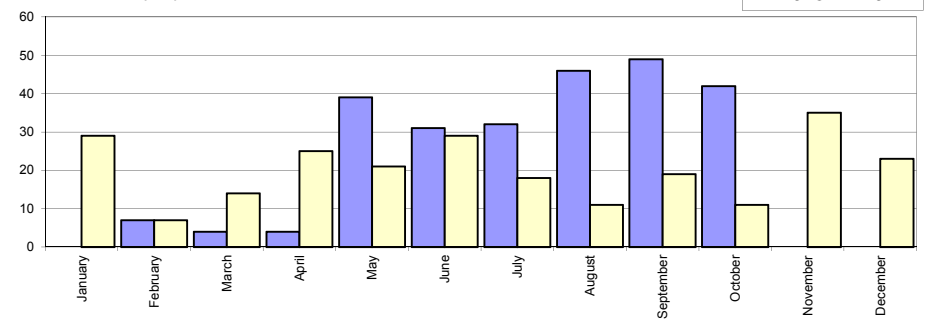
\*) Estimari APIA / APIA Estimates

## Livri comerciale usoare + minibus autohtone / Domestic LCV + minibus deliveries

Luna/An	2018	2017	Variatie
January	-	29	-
February	7	7	0.0%
March	4	14	-71.4%
April	4	25	-84.0%
May	39	21	85.7%
June	31	29	6.9%
July	32	18	77.8%
August	46	11	318.2%
September	49	19	157.9%
October	42	11	281.8%
November	-	35	-
December	-	23	-
<b>Total</b>	<b>254</b>	<b>155</b>	<b>63.9%</b>

242

Livri autohtone (buc)

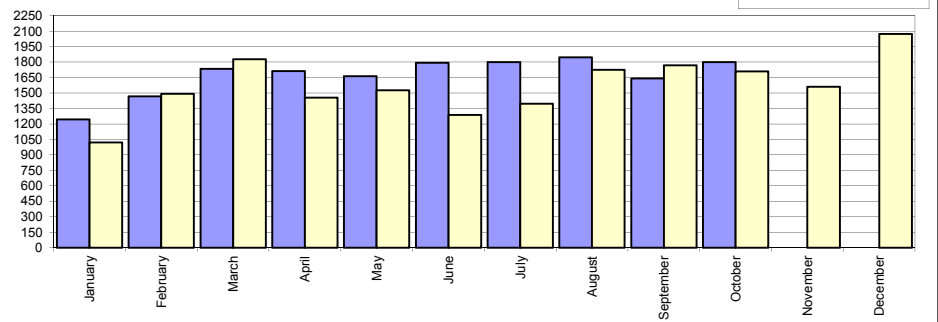


## Livri comerciale usoare + minibus import / Imported LCV + minibus deliveries

Luna/An	2018	2017	Variatie
January	1 243	1 021	21.7%
February	1 469	1 492	-1.5%
March	1 734	1 827	-5.1%
April	1 712	1 454	17.7%
May	1 662	1 526	8.9%
June	1 794	1 287	39.4%
July	1 801	1 395	29.1%
August	1 845	1 725	7.0%
September	1 642	1 769	-7.2%
October	1 801	1 710	5.3%
November	-	1 562	-
December	-	2 073	-
<b>Total</b>	<b>16 703</b>	<b>15 206</b>	<b>9.8%</b>

18 841

Livri import (buc)

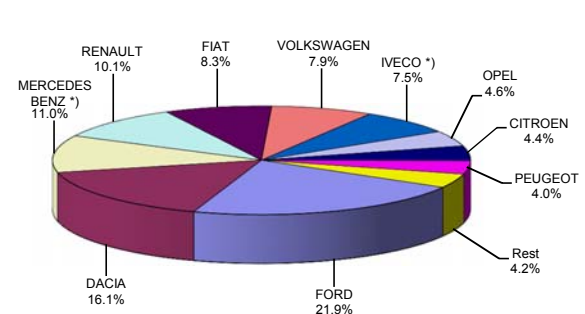


## Livri comerciale &lt;3.5t si minibus - marci / LCV + minibus sales by make

MARCA	Octombrie		Variatie Septembrie		2018		Variatie 2017	
	pozitie	unitati	pozitie	procent	pozitie	unitati	pozitie	procent
FORD	1	439	1	16.1%	1	<b>3713</b>	1	15.3%
DACIA	2	305	2	3.4%	2	<b>2735</b>	2	-0.4%
MERCEDES BENZ *)	3	222	6	66.9%	3	<b>1873</b>	3	2.5%
RENAULT	4	209	3	15.5%	4	<b>1712</b>	4	11.5%
FIAT	8	95	4	-37.9%	5	<b>1406</b>	6	13.9%
VOLKSWAGEN	5	158	7	46.3%	6	<b>1340</b>	5	1.4%
IVECO *)	6	133	5	-5.7%	7	<b>1265</b>	7	20.8%
OPEL	7	114	9	81.0%	8	<b>777</b>	9	31.7%
CITROEN	10	48	10	-18.6%	9	<b>744</b>	10	30.3%
PEUGEOT	9	67	8	-22.1%	10	<b>681</b>	8	3.8%
Rest		53		-43.6%		<b>711</b>		-
<b>TOTAL</b>		<b>1843</b>		<b>9.0%</b>		<b>16957</b>		<b>10.2%</b>

\*) Estimari APIA / APIA Estimates

Vanzari com &lt;3.5t si minibus - marci - 2018



## Livri comerciale &lt;3.5t si minibus - modele / LCV + minibus sales by model

MODEL	Octombrie		Variatie Septembrie		2018		Variatie 2017	
	pozitie	unitati	pozitie	procent	pozitie	unitati	pozitie	procent
DACIA DOKKER VAN	1	263	1	6.9%	1	<b>2481</b>	1	-3.1%
FORD TRANSIT	2	248	2	37.8%	2	<b>1909</b>	2	8.4%
IVECO *) DAILY	3	131	3	-5.1%	3	<b>1245</b>	3	20.9%
FIAT DUCATO	6	86	5	-1.2%	4	<b>1038</b>	4	6.9%
RENAULT MASTER	4	114	4	23.9%	5	<b>994</b>	5	27.1%
MERCEDES BENZ *) SPRINTER	5	109	6	91.2%	6	<b>757</b>	6	-0.1%
CITROEN JUMPER	12	44	10	-17.0%	7	<b>683</b>	8	32.9%
MERCEDES BENZ *) SPRINTER BUS	8	73	7	28.1%	8	<b>644</b>	7	20.2%
PEUGEOT BOXER	21	28	8	-50.0%	9	<b>472</b>	9	-4.3%
FORD RANGER	11	45	9	-19.6%	10	<b>440</b>	10	7.8%
Rest		702		4.9%		<b>6294</b>		-
<b>TOTAL</b>		<b>1843</b>		<b>9.0%</b>		<b>16957</b>		<b>10.2%</b>

\*) Estimari APIA / APIA Estimates

Vanzari com &lt;3.5t si minibus - modele - 2018

