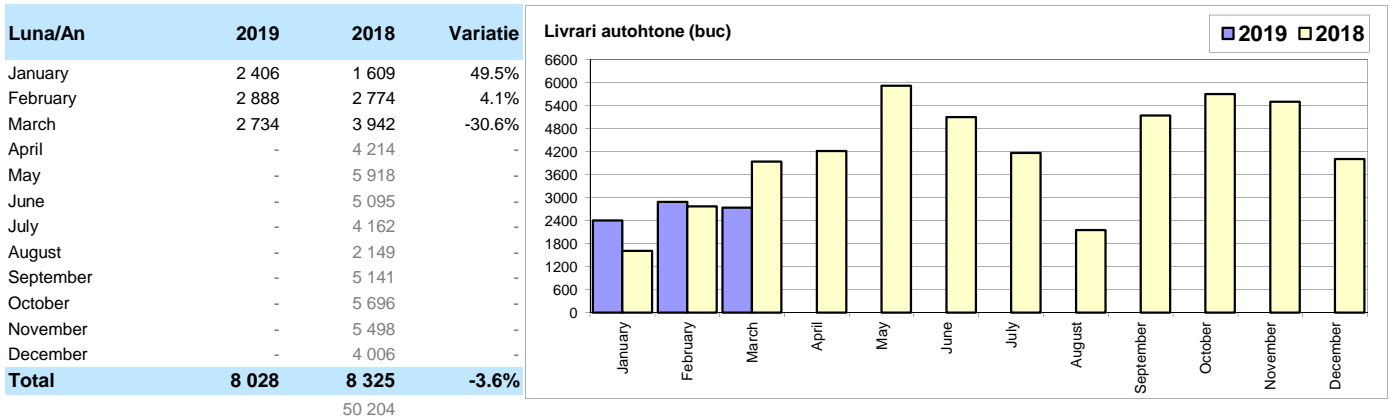
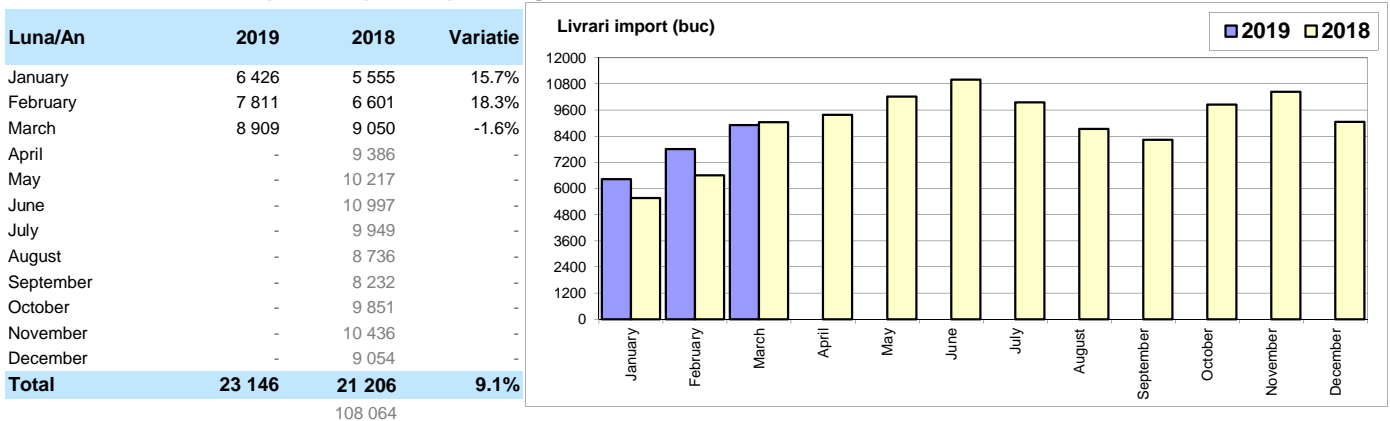


Livrari autoturisme autohtone / Domestic passenger car deliveries

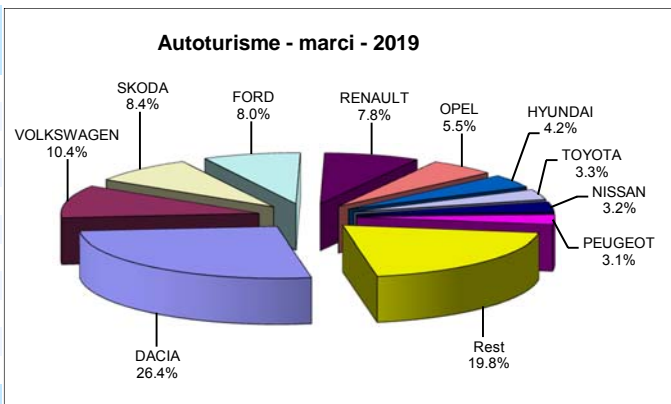


Livrari autoturisme import / Imported passenger car deliveries



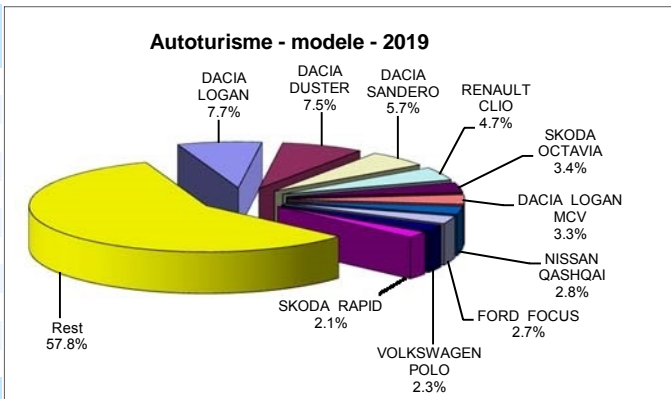
Top livrari autoturisme - marci / Passenger car top - by make

MARCA	Martie		Februarie		2019	Variate2018		
	pozitie	unitati	pozitie	procent		pozitie	unitati	procent
DACIA	1	2909	1	1.4%	1	8218	1	-4.3%
VOLKSWAGEN	2	1266	2	16.8%	2	3230	2	-4.7%
SKODA	3	959	4	7.4%	3	2629	3	-4.1%
FORD	5	713	5	-15.7%	4	2485	4	19.7%
RENAULT	4	851	3	-16.4%	5	2428	5	20.6%
OPEL	6	631	6	17.5%	6	1700	6	31.5%
HYUNDAI	7	519	7	19.6%	7	1310	7	25.0%
TOYOTA	12	281	8	-30.5%	8	1024	9	20.1%
NISSAN	8	448	10	46.4%	9	990	10	29.9%
PEUGEOT	9	429	9	31.2%	10	977	13	64.2%
Rest		2637		33.1%		6183		-
TOTAL		11643		8.8%		31174		5.6%



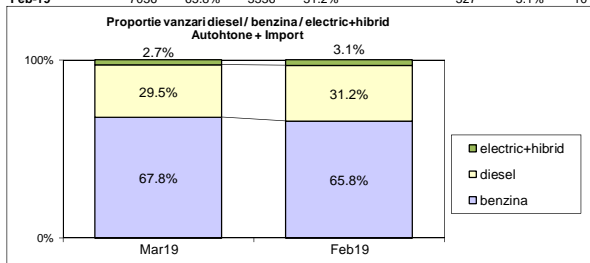
Top livrari autoturisme - modele / Passenger car top - by model

MODEL	Martie		Februarie		2019	Variate2018		
	pozitie	unitati	pozitie	procent		pozitie	unitati	procent
DACIA LOGAN	1	896	2	13.7%	1	2399	1	-26.6%
DACIA DUSTER	2	744	3	7.5%	2	2340	3	11.3%
DACIA SANDERO	3	605	1	-31.0%	3	1768	2	-16.3%
RENAULT CLIO	4	471	4	-27.8%	4	1452	5	50.8%
SKODA OCTAVIA	7	354	5	-5.9%	5	1072	4	-1.3%
DACIA LOGAN MCV	6	365	6	-1.4%	6	1029	11	77.1%
NISSAN QASHQAI	5	397	9	49.8%	7	864	12	49.5%
FORD FOCUS	12	224	7	-27.5%	8	852	9	28.5%
VOLKSWAGEN POLO	8	345	17	127.0%	9	709	25	159.7%
SKODA RAPID	11	231	11	-3.8%	10	663	8	-3.2%
Rest		7011		17.3%		18026		-
TOTAL		11643		8.8%		31174		5.6%

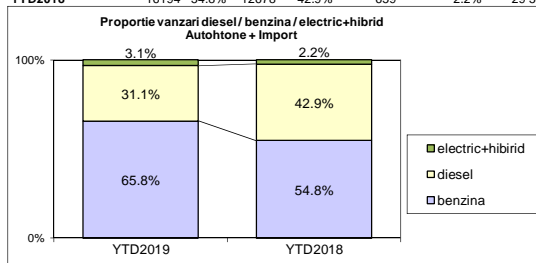


Autohtone + Import / Domestic + Imported

	benzina	diesel	electric+hibrid	total
Mar-19	7897 67.8%	3436 29.5%	310 2.7%	11 643
Feb-19	7036 65.8%	3336 31.2%	327 3.1%	10 699



	benzina	diesel	electric+hibrid	total
YTD2019	20510 65.8%	9705 31.1%	959 3.1%	31 174
YTD2018	16194 54.8%	12678 42.9%	659 2.2%	29 531



Livrari autoturisme in functie de tipul de combustibil / Passenger car deliveries by fuel type

Luna/An	2019		Pondere		2018		Variatie 19/18	
	diesel	benzina	diesel	benzina	diesel	benzina	diesel	benzina
January	2 933	5 577	33.2%	63.1%	3 327	3 644	-11.8%	53.0%
February	3 336	7 036	31.2%	65.8%	4 151	5 028	-19.6%	39.9%
March	3 436	7 897	29.5%	67.8%	5 200	7 522	-33.9%	5.0%
April	-	-	-	-	4 880	8 373	-	-
May	-	-	-	-	5 487	10 301	-	-
June	-	-	-	-	6 052	9 557	-	-
July	-	-	-	-	5 007	8 728	-	-
August	-	-	-	-	3 987	6 507	-	-
September	-	-	-	-	3 745	9 304	-	-
October	-	-	-	-	4 412	10 553	-	-
November	-	-	-	-	5 054	10 372	-	-
December	-	-	-	-	4 430	8 075	-	-
Total	9 705	20 510	31.1%	65.8%	12 678	16 194	-23.5%	26.7%

Top Marci - Electrice

MARCA	2019			Var. %	2018			Var. %
	2019	2018	2017					
SMART *)	34	43	-20.9%					
VOLKSWAGEN	33	22	50.0%					
NISSAN	12	0	-					
BMW	11	21	-47.6%					
RENAULT	9	8	12.5%					
JAGUAR	5	0	-					
MERCEDES BENZ *)	1	1	0.0%					
ALTE MARCI *)	0	3	-100.0%					
KIA	0	2	-100.0%					
TOTAL	105	100	5.0%					

Top Marci - Plug-in

MARCA	2019			Var. %	2018			Var. %
	2019	2018	2017					
VOLVO	23	9	155.6%					
LAND ROVER	13	0	-					
MINI	3	3	0.0%					
BMW	2	6	-66.7%					
MERCEDES BENZ *)	2	13	-84.6%					
AUDI	0	3	-100.0%					
PORSCHE	0	4	-100.0%					
VOLKSWAGEN	0	66	-100.0%					
TOTAL	47	104	-54.8%					

Top Marci - Hibride

MARCA	2019			Var. %	2018			Var. %
	2019	2018	2017					
TOYOTA	694	395	75.7%					
LEXUS	42	25	68.0%					
FORD	25	6	316.7%					
KIA	20	15	33.3%					
HONDA	14	0	-					
HYUNDAI	7	4	75.0%					
SUZUKI	5	2	150.0%					
MERCEDES BENZ *)	0	8	-100.0%					
TOTAL	807	455	77.4%					

*) Estimari APIA / APIA Estimates

Top 10 Autoturisme in functie de tipul de alimentare - marci / Top 10 passenger car sales by fuel type and make

Top 10 diesel - marci

MARCA	Martie		Pondere %	Variatie an precedent %	Pondere diesel/total
	2019	2019			
DACIA	1038	3082	31.8%	-28.3%	37.5%
FORD	303	1045	10.8%	2.8%	42.1%
SKODA	344	1033	10.6%	-14.7%	39.3%
VOLKSWAGEN	357	961	9.9%	-25.8%	29.8%
RENAULT	234	734	7.6%	-26.7%	30.2%
BMW	220	431	4.4%	-3.1%	70.1%
AUDI	211	381	3.9%	24.9%	80.2%
MERCEDES BENZ *)	115	376	3.9%	-47.3%	53.6%
HYUNDAI	116	338	3.5%	119.5%	25.8%
PEUGEOT	46	207	2.1%	-28.9%	21.2%
Rest	452	1117	11.5%	-42.6%	-
TOTAL	3436	9705	100%	-23.5%	31.1%

*) Estimari APIA / APIA Estimates

Top 10 benzina - marci

MARCA	Martie		Pondere %	Variatie an precedent %	Pondere benzina/total
	2019	2019			
DACIA	1871	5136	25.0%	19.8%	62.5%
VOLKSWAGEN	902	2236	10.9%	11.5%	69.2%
RENAULT	615	1685	8.2%	67.8%	69.4%
SKODA	615	1596	7.8%	4.4%	60.7%
OPEL	573	1522	7.4%	55.5%	89.5%
FORD	402	1415	6.9%	34.4%	56.9%
HYUNDAI	398	965	4.7%	8.4%	73.7%
NISSAN	384	823	4.0%	99.8%	83.1%
PEUGEOT	383	770	3.8%	153.3%	78.8%
SUZUKI	292	757	3.7%	4.6%	99.2%
Rest	1462	3605	17.6%	19.9%	-
TOTAL	7897	20510	100%	26.7%	65.8%

*) Estimari APIA / APIA Estimates

Top 10 Autoturisme in functie de tipul de alimentare - modele / Top 10 passenger car sales by fuel type and model

Top 10 diesel - model

MODEL	Martie		Pondere %	Variatie an precedent %	Pondere diesel/total
	2019	2019			
DACIA DUSTER	516	1511	15.6%	-14.8%	64.6%
DACIA LOGAN	287	770	7.9%	-52.3%	32.1%
SKODA OCTAVIA	188	603	6.2%	-2.6%	56.3%
RENAULT CLIO	188	557	5.7%	70.3%	38.4%
FORD FOCUS	65	328	3.4%	6.1%	38.5%
FORD KUGA	123	313	3.2%	-13.8%	67.2%
HYUNDAI TUCSON	100	294	3.0%	219.6%	59.9%
VOLKSWAGEN TIGUAN	92	281	2.9%	-25.5%	44.0%
DACIA LOGAN MCV	86	274	2.8%	-3.9%	26.6%
DACIA DOKKER	61	233	2.4%	20.7%	47.6%
Rest	1730	4541	46.8%	-32.5%	-
TOTAL	3436	9705	100%	-23.5%	31.1%

*) Estimari APIA / APIA Estimates

Top 10 benzina - model

MODEL	Martie		Pondere %	Variatie an precedent %	Pondere benzina/total
	2019	2019			
DACIA LOGAN	609	1629	7.9%	-1.7%	67.9%
DACIA SANDERO	558	1594	7.8%	-9.6%	90.2%
RENAULT CLIO	283	895	4.4%	40.7%	61.6%
DACIA DUSTER	228	829	4.0%	151.2%	35.4%
DACIA LOGAN MCV	279	755	3.7%	155.1%	73.4%
NISSAN QASHQAI	342	746	3.6%	138.3%	86.3%
VOLKSWAGEN POLO	345	703	3.4%	166.3%	99.2%
SKODA RAPID	231	661	3.2%	43.1%	99.7%
OPEL ASTRA	222	547	2.7%	68.8%	93.7%
FORD FOCUS	159	524	2.6%	48.0%	61.5%
Rest	4641	11627	56.7%	18.7%	-
TOTAL	7897	20510	100%	26.7%	65.8%

*) Estimari APIA / APIA Estimates

Distributia livrarilor dupa tipul de tractiune 4x4 / Deliveries breakdown on four wheel drive

Marca	YTD 2019			YTD 2018	Variatie 2019/2018 %
	unitati	pondere			
		din total 4x4	din total marca		
DACIA	1725	24.8%	21.0%	1565	10.2%
HYUNDAI	608	8.8%	46.4%	238	155.5%
MERCEDES BENZ *)	542	7.8%	77.3%	713	-24.0%
VOLKSWAGEN	495	7.1%	15.3%	715	-30.8%
BMW	491	7.1%	79.8%	460	6.7%
FORD	427	6.1%	17.2%	426	0.2%
SUZUKI	407	5.9%	53.3%	506	-19.6%
SKODA	345	5.0%	13.1%	415	-16.9%
AUDI	329	4.7%	69.3%	281	17.1%
MAZDA	259	3.7%	52.5%	203	27.6%
LAND ROVER	198	2.9%	100.0%	190	4.2%
KIA	194	2.8%	33.3%	195	-0.5%
VOLVO	149	2.1%	80.1%	93	60.2%
OPEL	114	1.6%	6.7%	88	29.5%
HONDA	96	1.4%	30.7%	127	-24.4%
Alte marci	566	8.1%	7.8%	673	-15.9%
TOTAL	6945	100.0%	22.3%	6888	0.8%

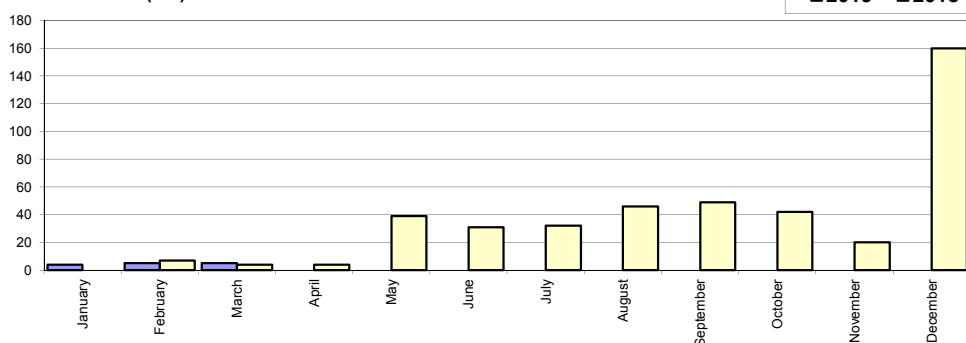
*) Estimari APIA / APIA Estimates

Livrari comerciale usoare + minibus autohtone / Domestic LCV + minibus deliveries

Luna/An	2019	2018	Variatie
January	4	-	-
February	5	7	-28.6%
March	5	4	25.0%
April	-	4	-
May	-	39	-
June	-	31	-
July	-	32	-
August	-	46	-
September	-	49	-
October	-	42	-
November	-	20	-
December	-	160	-
Total	14	11	27.3%

434

Livrari autohtone (buc)

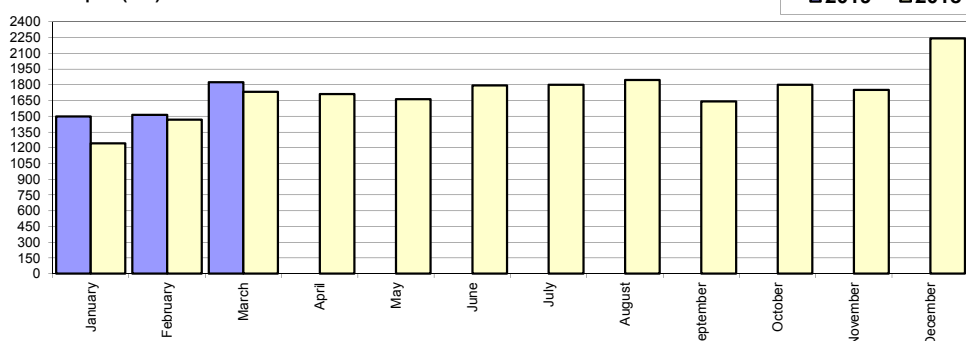


Livrari comerciale usoare + minibus import / Imported LCV + minibus deliveries

Luna/An	2019	2018	Variatie
January	1 497	1 243	20.4%
February	1 514	1 469	3.1%
March	1 826	1 734	5.3%
April	-	1 712	-
May	-	1 662	-
June	-	1 794	-
July	-	1 801	-
August	-	1 845	-
September	-	1 642	-
October	-	1 801	-
November	-	1 750	-
December	-	2 242	-
Total	4 837	4 446	8.8%

20 695

Livrari import (buc)

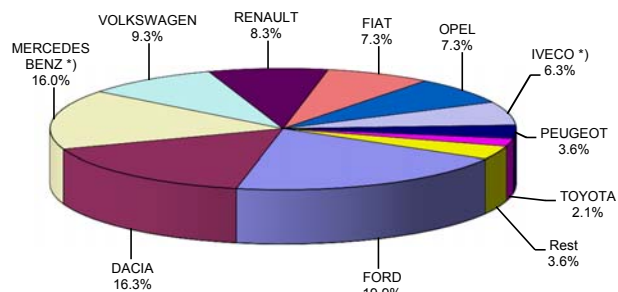


Livrari comerciale <3.5t si minibus - marti / LCV + minibus sales by make

MARCA	Martie		Variatie Februarie		2019		Variatie2018	
	pozitie	unitati	pozitie	procent	pozitie	unitati	pozitie	procent
FORD	1	343	1	-1.7%	1	964	1	-1.5%
DACIA	2	330	3	59.4%	2	790	2	9.3%
MERCEDES BENZ *)	3	252	2	-4.9%	3	778	3	59.4%
VOLKSWAGEN	4	202	4	33.8%	4	451	7	55.0%
RENAULT	6	161	5	24.8%	5	402	4	-5.6%
FIAT	5	165	7	65.0%	6	356	5	-15.4%
OPEL	7	124	6	2.5%	7	355	10	72.3%
IVECO *)	8	105	8	52.2%	8	304	6	-1.9%
PEUGEOT	9	56	11	80.7%	9	175	8	-18.6%
TOYOTA	10	33	9	-10.8%	10	100	11	23.5%
Rest		60		0.0%		176		-
TOTAL		1831		20.5%		4851		8.8%

*) Estimari APIA / APIA Estimates

Vanzari com <3.5t si minibus - marti - 2019



Livrari comerciale <3.5t si minibus - modele / LCV + minibus sales by model

MODEL	Martie		Variatie Februarie		2019		Variatie2018	
	pozitie	unitati	pozitie	procent	pozitie	unitati	pozitie	procent
DACIA DOKKER VAN	1	325	1	60.9%	1	776	1	9.0%
FORD TRANSIT	2	158	2	-8.1%	2	446	2	-15.1%
MERCEDES BENZ *) SPRINTER	7	97	3	-20.5%	3	346	6	75.6%
IVECO *) DAILY	5	105	7	52.2%	4	304	4	-1.0%
MERCEDES BENZ *) SPRINTER BUS	3	113	4	32.9%	5	275	9	96.4%
FIAT DUCATO	4	112	6	57.8%	6	255	3	-22.5%
RENAULT MASTER	6	100	5	29.9%	7	239	5	-0.4%
OPEL MOVANO	10	65	10	27.5%	8	186	10	42.0%
VOLKSWAGEN CRAFT	9	68	11	58.1%	9	156	13	44.4%
VOLKSWAGEN TRANSP	8	84	8	42.4%	10	149	15	104.1%
Rest		604		6.3%		1719		-
TOTAL		1831		20.5%		4851		8.8%

*) Estimari APIA / APIA Estimates

Vanzari com <3.5t si minibus - modele - 2019

