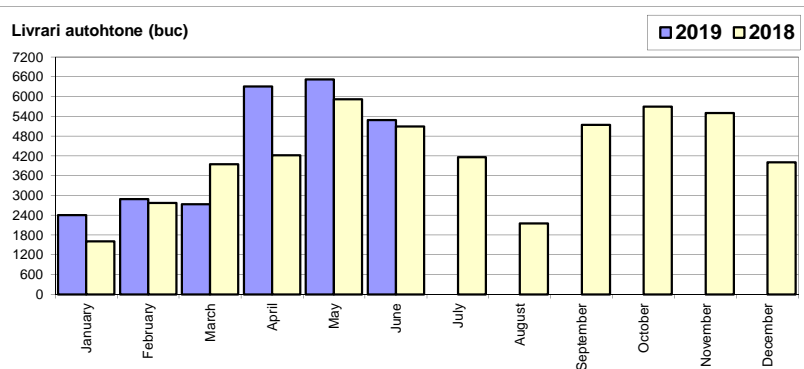


**Livrari autoturisme autohtone / Domestic passenger car deliveries**

Luna/An	2019	2018	Variatie
January	2 406	1 609	49.5%
February	2 888	2 774	4.1%
March	2 734	3 942	-30.6%
April	6 302	4 214	49.5%
May	6 516	5 918	10.1%
June	5 284	5 095	3.7%
July	-	4 162	-
August	-	2 149	-
September	-	5 141	-
October	-	5 696	-
November	-	5 498	-
December	-	4 006	-
<b>Total</b>	<b>26 130</b>	<b>23 552</b>	<b>10.9%</b>

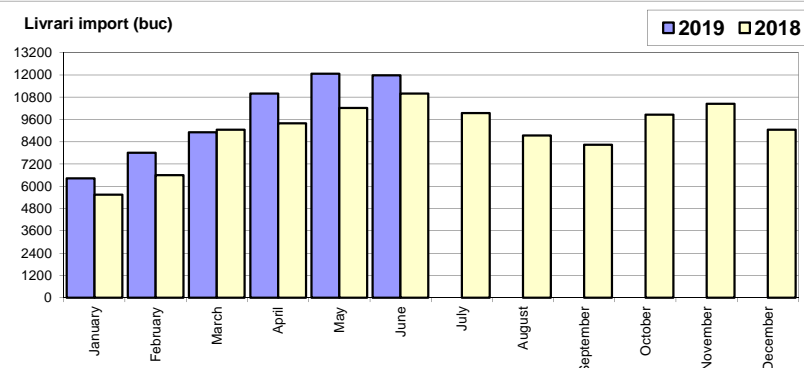
50 204



**Livrari autoturisme import / Imported passenger car deliveries**

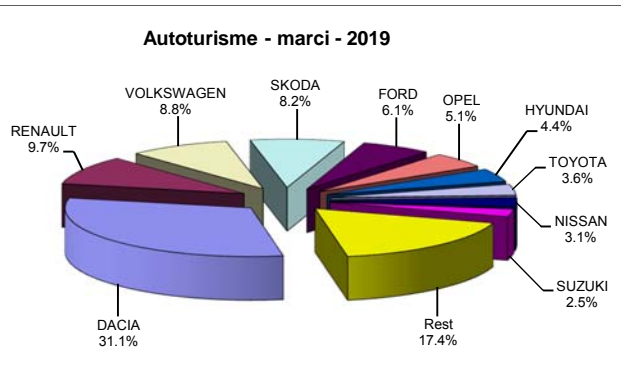
Luna/An	2019	2018	Variatie
January	6 426	5 555	15.7%
February	7 811	6 601	18.3%
March	8 909	9 050	-1.6%
April	10 988	9 386	17.1%
May	12 062	10 217	18.1%
June	11 974	10 997	8.9%
July	-	9 949	-
August	-	8 736	-
September	-	8 232	-
October	-	9 851	-
November	-	10 436	-
December	-	9 054	-
<b>Total</b>	<b>58 170</b>	<b>51 806</b>	<b>12.3%</b>

108 064



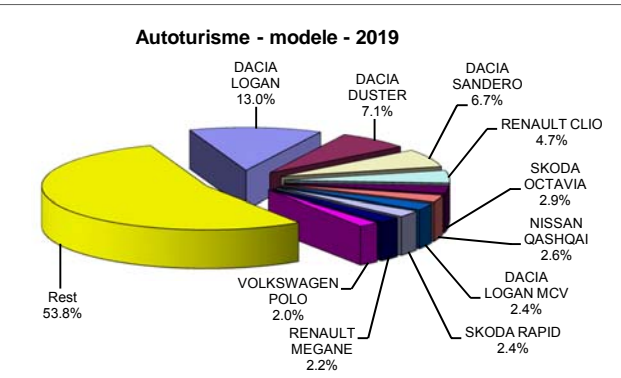
**Top livrari autoturisme - marci / Passenger car top - by make**

MARCA	Iunie		Variatie Mai		2019		Variatie 2018	
	pozitie	unitati	pozitie	procent	pozitie	unitati	pozitie	procent
DACIA	1	5312	1	-17.3%	1	26200	1	7.6%
RENAULT	2	1923	2	10.6%	2	8182	4	37.0%
VOLKSWAGEN	4	1387	4	-5.5%	3	7418	2	-1.8%
SKODA	3	1499	3	-0.5%	4	6889	3	1.9%
FORD	6	883	6	-4.5%	5	5168	5	11.9%
OPEL	5	884	5	-8.2%	6	4285	6	23.1%
HYUNDAI	8	698	7	-23.1%	7	3702	7	28.0%
TOYOTA	7	778	8	-8.8%	8	3051	9	36.6%
NISSAN	9	639	9	18.1%	9	2619	11	43.8%
SUZUKI	10	429	10	-9.3%	10	2107	8	-7.1%
Rest		2826		1.6%		14679		-
<b>TOTAL</b>		<b>17258</b>		<b>-7.1%</b>		<b>84300</b>		<b>11.9%</b>



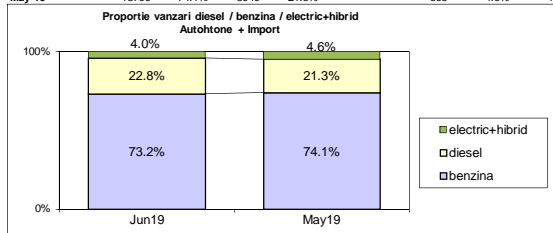
**Top livrari autoturisme - modele / Passenger car top - by model**

MODEL	Iunie		Variatie Mai		2019		Variatie 2018	
	pozitie	unitati	pozitie	procent	pozitie	unitati	pozitie	procent
DACIA LOGAN	1	2223	1	-35.1%	1	10973	1	10.9%
DACIA DUSTER	2	1307	2	3.4%	2	5981	2	2.6%
DACIA SANDERO	3	1065	3	-11.5%	3	5680	3	9.1%
RENAULT CLIO	4	784	4	0.5%	4	3994	4	41.3%
SKODA OCTAVIA	7	456	5	-12.8%	5	2468	5	-6.1%
NISSAN QASHQAI	5	529	8	26.3%	6	2174	13	60.9%
DACIA LOGAN MCV	9	382	14	44.7%	7	2060	6	14.3%
SKODA RAPID	8	389	6	-25.5%	8	2051	7	19.5%
RENAULT MEGANE	10	347	7	-24.1%	9	1858	12	33.6%
VOLKSWAGEN POLO	16	244	9	-32.6%	10	1687	9	11.3%
Rest		9532		1.9%		45374		-
<b>TOTAL</b>		<b>17258</b>		<b>-7.1%</b>		<b>84300</b>		<b>11.9%</b>

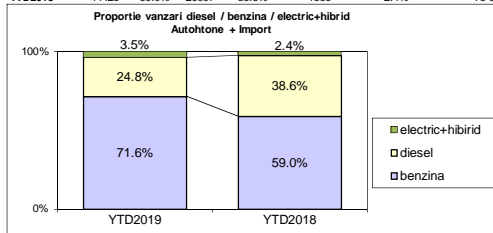


Segmentare dupa tipul de combustibil / Segmentation by type of fuel  
Autohtone + Import / Domestic + Imported

	benzina		diesel		electric+hibrid		total
Jun-19	12632	73.2%	3932	22.8%	694	4.0%	17 258
May-19	13766	74.1%	3949	21.3%	863	4.6%	18 578



	benzina		diesel		electric+hibrid		total
YTD2019	60387	71.6%	20934	24.8%	2979	3.5%	84 900
YTD2018	44425	59.0%	29097	38.6%	1836	2.4%	75 358



Livrari autoturisme in functie de tipul de combustibil / Passenger car deliveries by fuel type

Luna/An	2019		Pondere		2018		Variatie 19'18	
	diesel	benzina	diesel	benzina	diesel	benzina	diesel	benzina
January	2 933	5 577	33.2%	63.1%	3 327	3 644	-11.8%	53.0%
February	3 336	7 036	31.2%	65.8%	4 151	5 028	-19.6%	39.9%
March	3 436	7 897	29.5%	67.8%	5 200	7 522	-33.9%	5.0%
April	3 348	13 479	19.4%	78.0%	4 880	8 373	-31.4%	61.0%
May	3 949	13 766	21.3%	74.1%	5 487	10 301	-28.0%	33.6%
June	3 932	12 632	22.8%	73.2%	6 052	9 557	-35.0%	32.2%
July	-	-	-	-	5 007	8 728	-	-
August	-	-	-	-	3 987	6 507	-	-
September	-	-	-	-	3 745	9 304	-	-
October	-	-	-	-	4 412	10 553	-	-
November	-	-	-	-	5 054	10 372	-	-
December	-	-	-	-	4 430	8 075	-	-
<b>Total</b>	<b>20 934</b>	<b>60 387</b>	<b>24.8%</b>	<b>71.6%</b>	<b>29 097</b>	<b>44 425</b>	<b>-28.1%</b>	<b>35.9%</b>

Top Marci - Electrice				Top Marci - Plug-in				Top Marci - Hibride			
MARCA	2019	2018	Var. %	MARCA	2019	2018	Var. %	MARCA	2019	2018	Var. %
NISSAN	169	3	-	MINI	4	7	-42.9%	TOYOTA	2046	1282	59.6%
RENAULT	155	31	400.0%	MERCEDES BENZ *)	2	25	-92.0%	LEXUS	105	57	84.2%
VOLKSWAGEN	83	60	38.3%	AUDI	0	9	-100.0%	LAND ROVER	40	0	-
SMART *)	70	59	18.6%	KIA	0	4	-100.0%	FORD	34	30	13.3%
BMW	53	61	-13.1%	ALTE MARCI *)	4	8	-50.0%	HONDA	40	0	-
JAGUAR	15	0	-	<b>TOTAL</b>	<b>557</b>	<b>227</b>	<b>145.4%</b>	FORD	34	30	13.3%
AUDI	7	0	-	<b>TOTAL</b>	<b>130</b>	<b>170</b>	<b>-23.5%</b>	KIA	28	22	27.3%
MERCEDES BENZ *)	1	1	0.0%	<b>TOTAL</b>	<b>2292</b>	<b>1439</b>	<b>59.3%</b>	HYUNDAI	19	18	5.6%
KIA	0	4	-100.0%								
ALTE MARCI *)	4	8	-50.0%								

\*) Estimari APIA / APIA Estimates

Top 10 Autoturisme in functie de tipul de alimentare - marci / Top 10 passenger car sales by fuel type and make

MARCA	Iunie 2019		Pondere %	Variatie an precedent %	Pondere diesel/total
	2019	6 luni 2019			
DACIA	1522	7167	34.2%	-33.6%	27.4%
VOLKSWAGEN	563	2467	11.8%	-10.6%	33.3%
SKODA	390	2079	9.9%	-28.7%	30.2%
FORD	186	1694	8.1%	-14.4%	32.8%
RENAULT	139	1352	6.5%	-47.8%	16.5%
BMW	226	910	4.3%	-8.3%	68.4%
MERCEDES BENZ *)	120	816	3.9%	-41.5%	50.2%
HYUNDAI	135	793	3.8%	91.5%	21.4%
AUDI	105	646	3.1%	6.4%	69.2%
PEUGEOT	132	606	2.9%	-1.5%	29.5%
Rest	414	2404	11.5%	-40.4%	-
<b>TOTAL</b>	<b>3932</b>	<b>20934</b>	<b>100%</b>	<b>-28.1%</b>	<b>24.8%</b>

\*) Estimari APIA / APIA Estimates

MARCA	Iunie 2019		Pondere %	Variatie an precedent %	Pondere benzina/total
	2019	6 luni 2019			
DACIA	3790	19033	31.5%	40.4%	72.6%
RENAULT	1710	6675	11.1%	99.1%	81.6%
VOLKSWAGEN	808	4868	8.1%	4.5%	65.6%
SKODA	1109	4810	8.0%	25.0%	69.8%
OPEL	821	3976	6.6%	37.8%	92.8%
FORD	693	3440	5.7%	31.8%	66.6%
HYUNDAI	560	2890	4.8%	17.5%	78.1%
NISSAN	511	2095	3.5%	105.4%	80.0%
SUZUKI	426	2087	3.5%	-4.1%	99.1%
PEUGEOT	199	1448	2.4%	102.2%	70.5%
Rest	2005	9065	15.0%	27.0%	-
<b>TOTAL</b>	<b>12632</b>	<b>60387</b>	<b>100%</b>	<b>35.9%</b>	<b>71.6%</b>

\*) Estimari APIA / APIA Estimates

Top 10 Autoturisme in functie de tipul de alimentare - modele / Top 10 passenger car sales by fuel type and model

MODEL	Iunie 2019		Pondere %	Variatie an precedent %	Pondere diesel/total
	2019	6 luni 2019			
DACIA DUSTER	852	3716	17.8%	-24.8%	62.1%
DACIA LOGAN	323	1849	8.8%	-45.0%	16.9%
SKODA OCTAVIA	223	1189	5.7%	-17.1%	48.2%
RENAULT CLIO	15	828	4.0%	-28.0%	20.7%
HYUNDAI TUCSON	114	687	3.3%	194.8%	62.7%
VOLKSWAGEN TIGUAN	105	583	2.8%	-21.6%	50.4%
VOLKSWAGEN PASSAT	167	575	2.7%	-4.8%	75.8%
FORD KUGA	73	531	2.5%	-14.4%	54.6%
DACIA DOKKER	109	506	2.4%	-2.3%	48.5%
DACIA LOGAN MCV	100	489	2.3%	-37.6%	23.7%
Rest	1851	9981	47.7%	-32.1%	-
<b>TOTAL</b>	<b>3932</b>	<b>20934</b>	<b>100%</b>	<b>-28.1%</b>	<b>24.8%</b>

\*) Estimari APIA / APIA Estimates

MODEL	Iunie 2019		Pondere %	Variatie an precedent %	Pondere benzina/total
	2019	6 luni 2019			
DACIA LOGAN	1900	9124	15.1%	39.6%	83.1%
DACIA SANDERO	1011	5340	8.8%	23.2%	94.0%
RENAULT CLIO	769	3166	5.2%	88.9%	79.3%
DACIA DUSTER	455	2265	3.8%	154.8%	37.9%
SKODA RAPID	389	2049	3.4%	68.8%	99.9%
NISSAN QASHQAI	456	1869	3.1%	158.1%	86.0%
VOLKSWAGEN POLO	242	1674	2.8%	13.2%	99.2%
DACIA LOGAN MCV	282	1571	2.6%	54.3%	76.3%
RENAULT MEGANE	289	1540	2.6%	136.9%	82.9%
RENAULT CAPTUR	462	1378	2.3%	70.3%	93.8%
Rest	6377	30411	50.4%	21.2%	-
<b>TOTAL</b>	<b>12632</b>	<b>60387</b>	<b>100%</b>	<b>35.9%</b>	<b>71.6%</b>

\*) Estimari APIA / APIA Estimates

Distributia livrarilor dupa tipul de tractiune 4x4 / Deliveries breakdown on four wheel drive

Marca	YTD 2019		YTD 2018	Variatie 2019/2018 %
	unitati	pondere		
		din total 4x4	din total marca	unitati
DACIA	4107	26.2%	15.7%	-2.7%
HYUNDAI	1440	9.2%	38.9%	150.0%
MERCEDES BENZ *)	1218	7.8%	74.9%	-14.8%
VOLKSWAGEN	1153	7.4%	15.5%	-18.8%
BMW	1060	6.8%	79.6%	1.9%
SUZUKI	1015	6.5%	48.2%	-26.9%
SKODA	819	5.2%	11.9%	-11.0%
FORD	782	5.0%	15.1%	8.8%
AUDI	634	4.0%	68.0%	12.0%
MAZDA	486	3.1%	40.8%	30.6%
KIA	382	2.4%	29.1%	-24.4%
LAND ROVER	377	2.4%	100.0%	-4.6%
TOYOTA	331	2.1%	10.8%	26.3%
VOLVO	302	1.9%	80.1%	33.0%
HONDA	195	1.2%	25.1%	1.6%
Alte marci	1381	8.8%	6.3%	-6.8%
<b>TOTAL</b>	<b>15682</b>	<b>100.0%</b>	<b>18.6%</b>	<b>-0.2%</b>

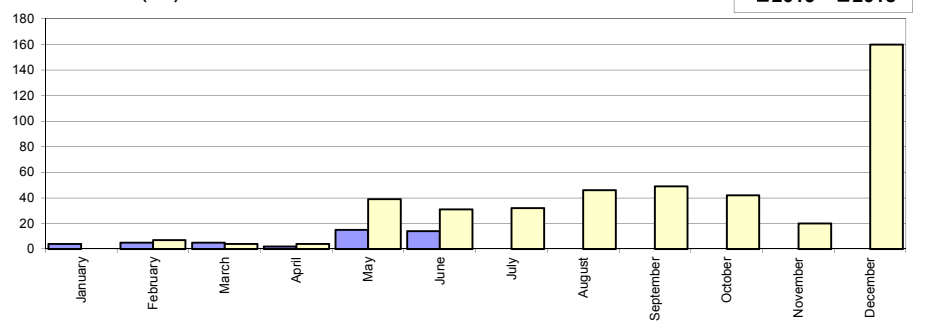
\*) Estimari APIA / APIA Estimates

## Livrari comerciale usoare + minibus autohtone / Domestic LCV + minibus deliveries

Luna/An	2019	2018	Variatie
January	4	0	-
February	5	7	-28.6%
March	5	4	25.0%
April	2	4	-50.0%
May	15	39	-61.5%
June	14	31	-54.8%
July	-	32	-
August	-	46	-
September	-	49	-
October	-	42	-
November	-	20	-
December	-	160	-
<b>Total</b>	<b>45</b>	<b>85</b>	<b>-47.1%</b>

434

Livrari autohtone (buc)

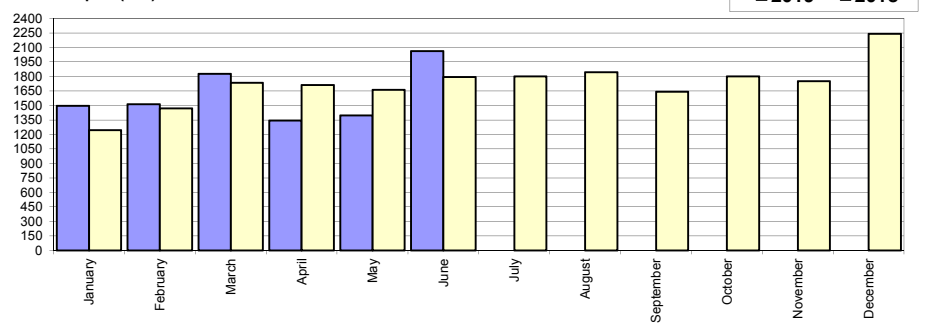


## Livrari comerciale usoare + minibus import / Imported LCV + minibus deliveries

Luna/An	2019	2018	Variatie
January	1 497	1 243	20.4%
February	1 514	1 469	3.1%
March	1 826	1 734	5.3%
April	1 343	1 712	-21.6%
May	1 397	1 662	-15.9%
June	2 063	1 794	15.0%
July	-	1 801	-
August	-	1 845	-
September	-	1 642	-
October	-	1 801	-
November	-	1 750	-
December	-	2 242	-
<b>Total</b>	<b>9 640</b>	<b>9 614</b>	<b>0.3%</b>

20 695

Livrari import (buc)

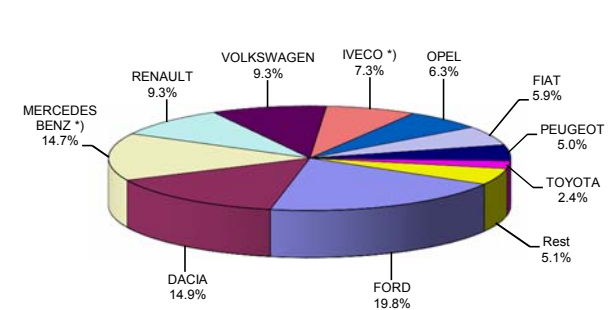


## Livrari comerciale &lt;3.5t si minibus - marci / LCV + minibus sales by make

MARCA	Iunie		Variatie Mai		2019		Variatie2018	
	pozitie	unitati	pozitie	procent	pozitie	unitati	pozitie	procent
FORD	1	369	1	30.4%	1	1919	1	-8.7%
DACIA	2	316	3	68.1%	2	1442	2	-5.6%
MERCEDES BENZ *)	4	216	2	9.6%	3	1424	3	37.1%
RENAULT	3	294	6	147.1%	4	902	5	0.9%
VOLKSWAGEN	6	145	5	-5.8%	5	898	6	9.7%
IVECO *)	7	123	4	-22.6%	6	706	7	-1.7%
OPEL	8	98	8	16.7%	7	613	8	38.1%
FIAT	10	83	9	76.6%	8	576	4	-37.3%
PEUGEOT	5	177	7	86.3%	9	481	10	24.0%
TOYOTA	11	64	10	93.9%	10	229	11	14.5%
Rest		192		262.3%		495		-
<b>TOTAL</b>		<b>2077</b>		<b>47.1%</b>		<b>9685</b>		<b>-0.2%</b>

\*) Estimari APIA / APIA Estimates

Vanzari com &lt;3.5t si minibus - marci - 2019



## Livrari comerciale &lt;3.5t si minibus - modele / LCV + minibus sales by model

MODEL	Iunie		Variatie Mai		2019		Variatie2018	
	pozitie	unitati	pozitie	procent	pozitie	unitati	pozitie	procent
DACIA DOKKER VAN	1	302	1	74.6%	1	1397	1	-3.2%
FORD TRANSIT	3	181	4	74.0%	2	889	2	-17.8%
IVECO *) DAILY	5	122	2	-22.8%	3	703	3	-0.9%
MERCEDES BENZ *) SPRINTER	6	113	3	6.6%	4	698	7	97.7%
RENAULT MASTER	2	223	6	223.2%	5	583	5	10.0%
FIAT DUCATO	8	61	19	134.6%	6	415	4	-39.2%
MERCEDES BENZ *) SPRINTER BUS	11	50	13	51.5%	7	394	8	13.2%
VOLKSWAGEN CRAFTER	14	43	8	-20.4%	8	316	14	42.3%
PEUGEOT BOXER	4	138	15	345.2%	9	294	9	0.3%
OPEL MOVANO	16	41	11	17.1%	10	292	10	13.6%
Rest		803		28.9%		3704		-
<b>TOTAL</b>		<b>2077</b>		<b>47.1%</b>		<b>9685</b>		<b>-0.2%</b>

\*) Estimari APIA / APIA Estimates

Vanzari com &lt;3.5t si minibus - modele - 2019

