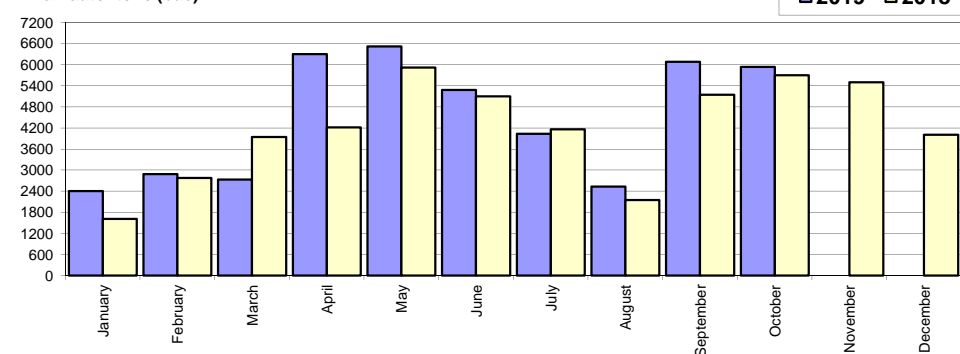


## Livrari autoturisme autohtone / Domestic passenger car deliveries

Luna/An	2019	2018	Variatie
January	2 406	1 609	49.5%
February	2 888	2 774	4.1%
March	2 734	3 942	-30.6%
April	6 302	4 214	49.5%
May	6 516	5 918	10.1%
June	5 284	5 095	3.7%
July	4 034	4 162	-3.1%
August	2 527	2 149	17.6%
September	6 078	5 141	18.2%
October	5 939	5 696	4.3%
November	-	5 498	-
December	-	4 006	-
<b>Total</b>	<b>44 708</b>	<b>40 700</b>	<b>9.8%</b>

Livrari autohtone (buc)



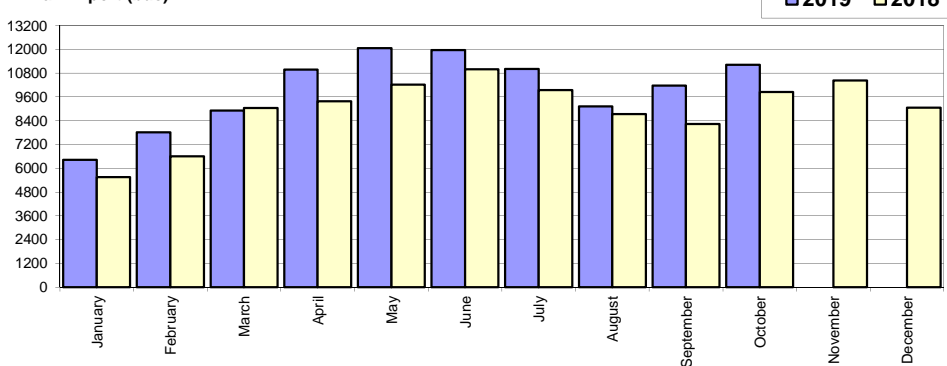
50 204

\* Datele cuprind atat volumele Ford cat si Dacia / Data includes both Dacia and Ford deliveries.

## Livrari autoturisme import / Imported passenger car deliveries

Luna/An	2019	2018	Variatie
January	6 426	5 555	15.7%
February	7 811	6 601	18.3%
March	8 909	9 050	-1.6%
April	10 988	9 386	17.1%
May	12 062	10 217	18.1%
June	11 974	10 997	8.9%
July	11 016	9 949	10.7%
August	9 121	8 736	4.4%
September	10 175	8 232	23.6%
October	11 216	9 851	13.9%
November	-	10 436	-
December	-	9 054	-
<b>Total</b>	<b>99 698</b>	<b>88 574</b>	<b>12.6%</b>

Livrari import (buc)

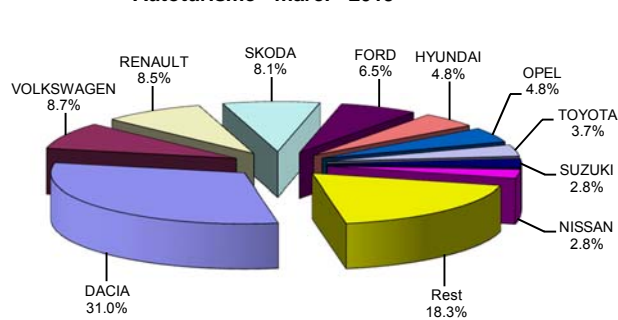


108 064

## Top livrari autoturisme - marci / Passenger car top - by make

MARCA	Octombrie		Septembrie		2019	Variatie2018		
	pozitie	unitati	pozitie	procent		pozitie	unitati	procent
DACIA	1	5976	1	-3.2%	1	<b>44773</b>	1	8.2%
VOLKSWAGEN	5	1039	2	-29.7%	2	<b>12538</b>	2	0.9%
RENAULT	2	1808	4	121.0%	3	<b>12278</b>	4	19.6%
SKODA	3	1325	3	12.3%	4	<b>11695</b>	3	4.8%
FORD	4	1120	6	64.7%	5	<b>9450</b>	5	21.0%
HYUNDAI	6	859	5	9.6%	6	<b>6976</b>	7	33.9%
OPEL	9	422	8	-36.1%	7	<b>6888</b>	6	10.2%
TOYOTA	8	546	9	-12.8%	8	<b>5309</b>	8	31.9%
SUZUKI	13	332	12	14.9%	9	<b>4025</b>	9	18.1%
NISSAN	10	413	10	-16.7%	10	<b>4021</b>	11	30.8%
Rest		3315		8.1%		<b>26453</b>		-
<b>TOTAL</b>		<b>17155</b>		<b>5.5%</b>		<b>144406</b>		<b>11.7%</b>

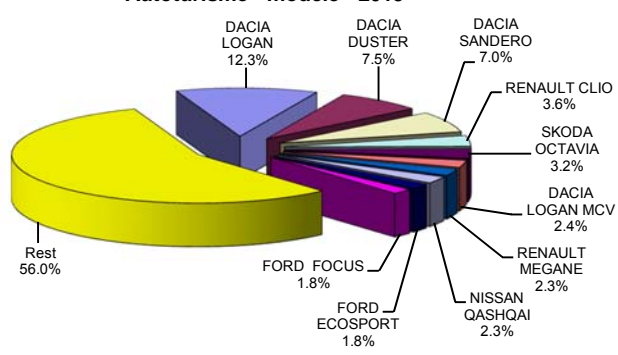
Autoturisme - marci - 2019



## Top livrari autoturisme - modele / Passenger car top - by model

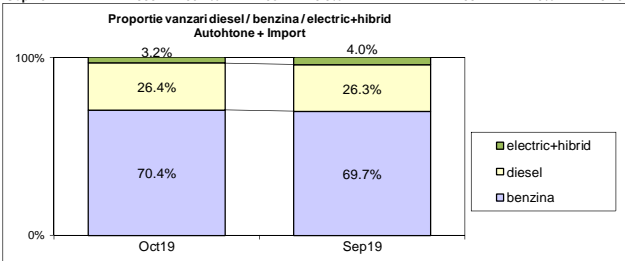
MODEL	Octombrie		Septembrie		2019	Variatie2018		
	pozitie	unitati	pozitie	procent		pozitie	unitati	procent
DACIA LOGAN	1	2012	1	-16.9%	1	<b>17793</b>	1	3.3%
DACIA DUSTER	2	1677	3	8.9%	2	<b>10827</b>	2	4.0%
DACIA SANDERO	3	1517	2	-9.3%	3	<b>10077</b>	3	18.4%
RENAULT CLIO	4	692	14	231.1%	4	<b>5143</b>	4	5.9%
SKODA OCTAVIA	5	667	5	17.6%	5	<b>4576</b>	5	1.9%
DACIA LOGAN MCV	9	395	10	33.0%	6	<b>3402</b>	6	16.4%
RENAULT MEGANE	8	429	7	-4.0%	7	<b>3294</b>	11	35.2%
NISSAN QASHQAI	11	332	6	-26.1%	8	<b>3285</b>	13	47.0%
FORD ECOSPORT	10	338	21	128.4%	9	<b>2609</b>	20	61.0%
FORD FOCUS	12	280	12	13.8%	10	<b>2570</b>	9	2.6%
Rest		8816		6.8%		<b>80830</b>		-
<b>TOTAL</b>		<b>17155</b>		<b>5.5%</b>		<b>144406</b>		<b>11.7%</b>

Autoturisme - modele - 2019

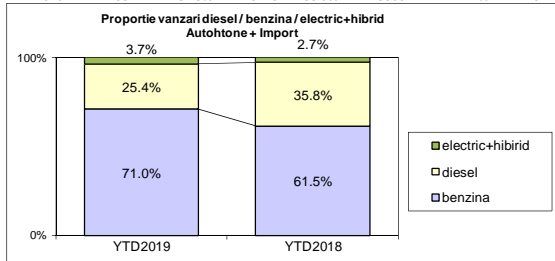


## Autohtone + Import / Domestic + Imported

	benzina	diesel	electric+hibrid	total
Oct-19	12083 70.4%	4523 26.4%	549 3.2%	17 155
Sep-19	11333 69.7%	4268 26.3%	652 4.0%	16 253



	benzina	diesel	electric+hibrid	total
YTD2019	102462 71.0%	36661 25.4%	5283 3.7%	144 406
YTD2018	79517 61.5%	46248 35.8%	3509 2.7%	129 274



## Livrari autoturisme in functie de tipul de combustibil / Passenger car deliveries by fuel type

Luna/An	2019		Pondere		2018		Variatie 19/18	
	diesel	benzina	diesel	benzina	diesel	benzina	diesel	benzina
January	2 933	5 579	33.2%	63.2%	3 327	3 644	-11.8%	53.1%
February	3 336	7 039	31.2%	65.8%	4 151	5 028	-19.6%	40.0%
March	3 436	7 897	29.5%	67.8%	5 200	7 522	-33.9%	5.0%
April	3 348	13 484	19.4%	78.0%	4 880	8 373	-31.4%	61.0%
May	3 949	13 776	21.3%	74.2%	5 487	10 301	-28.0%	33.7%
June	3 932	12 649	22.8%	73.3%	6 052	9 557	-35.0%	32.4%
July	3 993	10 525	26.5%	69.9%	5 007	8 728	-20.3%	20.6%
August	2 943	8 097	25.3%	69.5%	3 987	6 507	-26.2%	24.4%
September	4 268	11 333	26.3%	69.7%	3 745	9 304	14.0%	21.8%
October	4 523	12 083	26.4%	70.4%	4 412	10 553	2.5%	14.5%
November	-	-	-	-	5 054	10 372	-	-
December	-	-	-	-	4 430	8 075	-	-
<b>Total</b>	<b>36 661</b>	<b>102 462</b>	<b>25.4%</b>	<b>71.0%</b>	<b>46 248</b>	<b>79 517</b>	<b>-20.7%</b>	<b>28.9%</b>

Top Marci - Electrice				Top Marci - Plug-in				Top Marci - Hibride			
MARCA	2019	2018	Var. %	MARCA	2019	2018	Var. %	MARCA	2019	2018	Var. %
NISSAN	319	28	-	NISSAN	126	26	384.6%	TOYOTA	3265	2477	31.8%
RENAULT	316	71	345.1%	VOLVO	65	35	85.7%	LEXUS	203	98	107.1%
VOLKSWAGEN	203	124	63.7%	LAND ROVER	37	0	-	FORD	83	51	62.7%
BMW	155	110	40.9%	BMW	36	30	20.0%	HONDA	72	0	-
SMART *)	127	101	25.7%	PORSCHE *)	26	33	-21.2%	SUZUKI	70	24	191.7%
JAGUAR	32	0	-	MERCEDES BENZ *)	9	30	-70.0%	KIA	54	51	5.9%
AUDI	17	0	-	MNI	4	9	-55.6%	HYUNDAI	44	48	-8.3%
MERCEDES BENZ *)	3	1	200.0%	TOYOTA	1	0	-	LAND ROVER	3	1	200.0%
KIA	0	43	-100.0%	AUDI	0	9	-100.0%	MERCEDES BENZ *)	0	18	-100.0%
ALTE MARCI *)	13	9	44.4%	VOLKSWAGEN	0	82	-100.0%	TOTAL	3794	2768	37.1%
<b>TOTAL</b>	<b>1185</b>	<b>487</b>	<b>143.3%</b>	<b>TOTAL</b>	<b>304</b>	<b>254</b>	<b>19.7%</b>	<b>TOTAL</b>	<b>3794</b>	<b>2768</b>	<b>37.1%</b>

\*) Estimari APIA / APIA Estimates

## Top 10 Autoturisme in functie de tipul de alimentare - marci / Top 10 passenger car sales by fuel type and make

## Top 10 diesel - marci

MARCA	Octombrie 2019	10 luni 2019	Pondere %	Variatie an precedent %	Pondere diesel/total
DACIA	1997	13107	35.8%	-21.3%	29.3%
VOLKSWAGEN	322	4296	11.7%	-4.7%	34.3%
SKODA	506	3872	10.6%	-18.2%	33.1%
FORD	296	2854	7.8%	-7.9%	30.2%
RENAULT	111	1744	4.8%	-56.1%	14.2%
BMW	137	1405	3.8%	-4.9%	63.5%
MERCEDES BENZ *)	139	1402	3.8%	-43.6%	47.9%
PEUGEOT	257	1370	3.7%	35.0%	40.5%
HYUNDAI	152	1343	3.7%	72.2%	19.3%
AUDI	83	997	2.7%	-15.4%	63.8%
Rest	523	4271	11.6%	-32.7%	-
<b>TOTAL</b>	<b>4523</b>	<b>36661</b>	<b>100%</b>	<b>-20.7%</b>	<b>25.4%</b>

\*) Estimari APIA / APIA Estimates

## Top 10 benzina - marci

MARCA	Octombrie 2019	10 luni 2019	Pondere %	Variatie an precedent %	Pondere benzina/total
DACIA	3979	31666	30.9%	28.1%	70.7%
RENAULT	1668	10218	10.0%	64.2%	83.2%
VOLKSWAGEN	680	8039	7.8%	4.3%	64.1%
SKODA	819	7823	7.6%	21.7%	66.9%
FORD	817	6513	6.4%	39.8%	68.9%
OPEL	350	6330	6.2%	18.8%	91.9%
HYUNDAI	690	5589	5.5%	27.5%	80.1%
SUZUKI	303	3951	3.9%	20.8%	98.2%
NISSAN	329	3170	3.1%	76.0%	78.8%
FIAT	668	2622	2.6%	-3.0%	98.2%
Rest	1780	16541	16.1%	34.7%	-
<b>TOTAL</b>	<b>12083</b>	<b>102462</b>	<b>100%</b>	<b>28.9%</b>	<b>71.0%</b>

\*) Estimari APIA / APIA Estimates

## Top 10 Autoturisme in functie de tipul de alimentare - modele / Top 10 passenger car sales by fuel type and model

## Top 10 diesel - model

MODEL	Octombrie 2019	10 luni 2019	Pondere %	Variatie an precedent %	Pondere diesel/total
DACIA DUSTER	1260	7215	19.7%	-13.1%	66.6%
DACIA LOGAN	365	2997	8.2%	-33.9%	16.8%
SKODA OCTAVIA	274	2229	6.1%	-7.4%	48.7%
HYUNDAI TUCSON	130	1157	3.2%	142.1%	61.8%
VOLKSWAGEN PASSAT	58	960	2.6%	-3.1%	81.3%
DACIA DOKKER	115	908	2.5%	13.1%	48.6%
RENAULT CLIO	1	899	2.5%	-47.7%	17.5%
DACIA LOGAN MCV	112	889	2.4%	-25.8%	26.1%
VOLKSWAGEN TIGUAN	69	876	2.4%	-23.0%	43.5%
FORD KUGA	80	855	2.3%	-12.8%	50.9%
Rest	2059	17676	48.2%	-25.4%	-
<b>TOTAL</b>	<b>4523</b>	<b>36661</b>	<b>100%</b>	<b>-20.7%</b>	<b>25.4%</b>

\*) Estimari APIA / APIA Estimates

## Top 10 benzina - model

MODEL	Octombrie 2019	10 luni 2019	Pondere %	Variatie an precedent %	Pondere benzina/total
DACIA LOGAN	1647	14796	14.4%	16.5%	83.2%
DACIA SANDERO	1444	9489	9.3%	32.3%	94.2%
RENAULT CLIO	691	4244	4.1%	35.2%	82.5%
DACIA DUSTER	417	3612	3.5%	70.6%	33.4%
NISSAN QASHQAI	310	2860	2.8%	122.7%	87.1%
RENAULT MEGANE	374	2816	2.7%	114.8%	85.5%
DACIA LOGAN MCV	283	2513	2.5%	45.8%	73.9%
SKODA RAPID	32	2390	2.3%	12.6%	99.9%
SKODA OCTAVIA	393	2347	2.3%	12.7%	51.3%
FORD ECOSPORT	318	2324	2.3%	59.6%	89.1%
Rest	6174	55071	53.7%	24.0%	-
<b>TOTAL</b>	<b>12083</b>	<b>102462</b>	<b>100%</b>	<b>28.9%</b>	<b>71.0%</b>

\*) Estimari APIA / APIA Estimates

## Distributia livrarilor dupa tipul de tractiune 4x4 / Deliveries breakdown on four wheel drive

Marca	YTD 2019		YTD 2018	Variatie 2019/2018 %
	unitati	pondere din total 4x4 din total marca		
DACIA	6914	25.8%	7280	-5.0%
HYUNDAI	2582	9.6%	1202	114.8%
MERCEDES BENZ *)	2161	8.1%	2581	-16.3%
SUZUKI	1944	7.3%	2034	-4.4%
VOLKSWAGEN	1884	7.0%	2275	-17.2%
BMW	1682	6.3%	1602	5.0%
SKODA	1526	5.7%	1173	30.1%
FORD	1229	4.6%	1153	6.6%
AUDI	1060	4.0%	1036	2.3%
MAZDA	781	2.9%	565	38.2%
TOYOTA	659	2.5%	462	42.6%
LAND ROVER	615	2.3%	608	1.2%
KIA	593	2.2%	844	-29.7%
VOLVO	535	2.0%	428	25.0%
NISSAN	369	1.4%	294	25.5%
Alte marci	2275	8.5%	2500	-9.0%
<b>TOTAL</b>	<b>26809</b>	<b>100.0%</b>	<b>26037</b>	<b>3.0%</b>

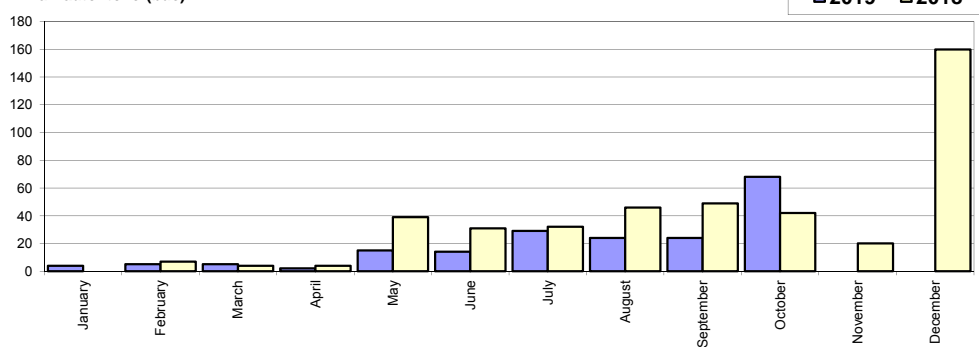
\*) Estimari APIA / APIA Estimates

## Livri comerciale usoare + minibus autohtone / Domestic LCV + minibus deliveries

Luna/An	2019	2018	Variatie
January	4	0	-
February	5	7	-28.6%
March	5	4	25.0%
April	2	4	-50.0%
May	15	39	-61.5%
June	14	31	-54.8%
July	29	32	-9.4%
August	24	46	-47.8%
September	24	49	-51.0%
October	68	42	61.9%
November	-	20	-
December	-	160	-
<b>Total</b>	<b>190</b>	<b>254</b>	<b>-25.2%</b>

434

Livri autohtone (buc)

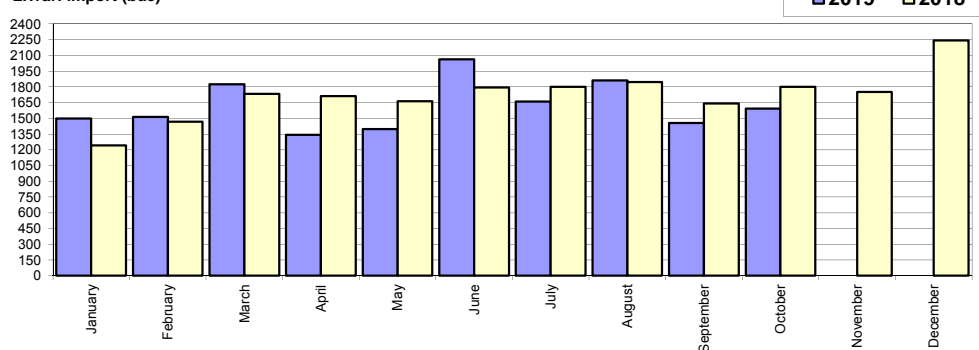


## Livri comerciale usoare + minibus import / Imported LCV + minibus deliveries

Luna/An	2019	2018	Variatie
January	1 497	1 243	20.4%
February	1 514	1 469	3.1%
March	1 826	1 734	5.3%
April	1 343	1 712	-21.6%
May	1 397	1 662	-15.9%
June	2 063	1 794	15.0%
July	1 660	1 801	-7.8%
August	1 861	1 845	0.9%
September	1 457	1 642	-11.3%
October	1 593	1 801	-11.5%
November	-	1 750	-
December	-	2 242	-
<b>Total</b>	<b>16 211</b>	<b>16 703</b>	<b>-2.9%</b>

20 695

Livri import (buc)

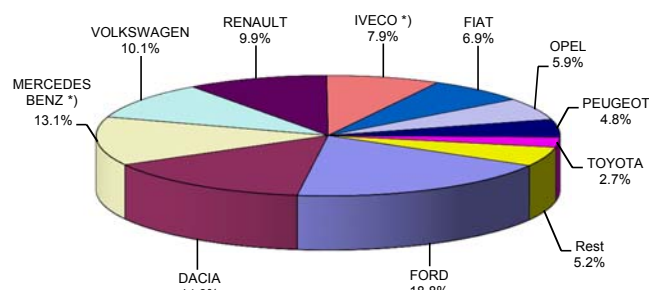


## Livri comerciale &lt;3.5t si minibus - marci / LCV + minibus sales by make

MARCA	Octombrie		Variatie Septembrie		2019		Variatie2018	
	pozitie	unitati	pozitie	procent	pozitie	unitati	pozitie	procent
FORD	1	331	3	44.5%	1	3082	1	-17.0%
DACIA	2	330	1	10.7%	2	2426	2	-11.3%
MERCEDES BENZ *)	4	176	6	50.4%	3	2143	3	14.4%
VOLKSWAGEN	3	202	5	66.9%	4	1649	6	23.1%
RENAULT	6	109	4	-26.4%	5	1617	4	-5.6%
IVECO *)	7	99	9	43.5%	6	1303	7	3.0%
FIAT	5	112	2	-52.1%	7	1132	5	-19.5%
OPEL	8	82	7	-8.9%	8	972	8	25.1%
PEUGEOT	11	46	8	-37.8%	9	784	10	15.1%
TOYOTA	10	47	10	-6.0%	10	444	11	47.0%
Rest		127		149.0%		849		-26.4%
<b>TOTAL</b>		<b>1661</b>		<b>12.2%</b>		<b>16401</b>		<b>-3.3%</b>

\*) Estimari APIA / APIA Estimates

Vanzari com &lt;3.5t si minibus - marci - 2019



## Livri comerciale &lt;3.5t si minibus - modele / LCV + minibus sales by model

MODEL	Octombrie		Variatie Septembrie		2019		Variatie2018	
	pozitie	unitati	pozitie	procent	pozitie	unitati	pozitie	procent
DACIA DOKKER VAN	1	262	1	-4.4%	1	2236	1	-9.9%
FORD TRANSIT	2	135	3	66.7%	2	1357	2	-28.9%
IVECO *) DAILY	4	99	6	45.6%	3	1299	3	4.3%
MERCEDES BENZ *) SPRINTER	5	92	11	80.4%	4	1083	6	43.1%
RENAULT MASTER	9	67	5	-2.9%	5	975	5	-1.9%
FIAT DUCATO	6	71	2	-59.2%	6	791	4	-23.8%
VOLKSWAGEN TRANSPORTER	3	121	4	55.1%	7	645	16	134.6%
PEUGEOT BOXER	16	38	7	-34.5%	8	513	9	8.7%
MERCEDES BENZ *) SPRINTER BUS	17	36	14	9.1%	9	503	8	-21.9%
VOLKSWAGEN CRAFTER	15	40	24	166.7%	10	487	14	26.5%
Rest		700		20.7%		6512		-3.6%
<b>TOTAL</b>		<b>1661</b>		<b>12.2%</b>		<b>16401</b>		<b>-3.3%</b>

\*) Estimari APIA / APIA Estimates

Vanzari com &lt;3.5t si minibus - modele - 2019

