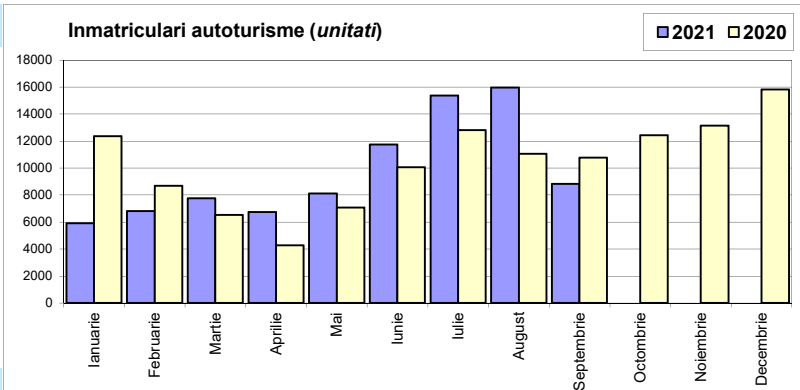


## Inmatriculari autoturisme / Passenger car registrations

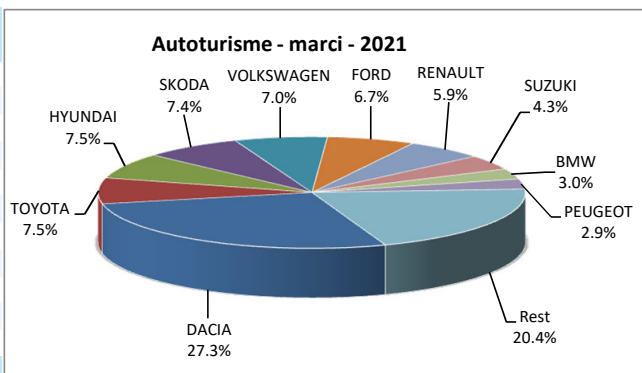
Luna/An	2021	2020	Variatie
Ianuarie	5 915	12 368	-52.2%
Februarie	6 815	8 688	-21.6%
Martie	7 754	6 532	18.7%
Aprilie	6 751	4 265	58.3%
Mai	8 113	7 067	14.8%
Iunie	11 749	10 060	16.8%
Iulie	15 362	12 815	19.9%
August	15 960	11 055	44.4%
Septembrie	8 827	10 777	-18.1%
Octombrie		12 421	-
Noiembrie		13 144	-
Decembrie		15 814	-
<b>Total</b>	<b>87 246</b>	<b>83 627</b>	<b>4.3%</b>

125 006



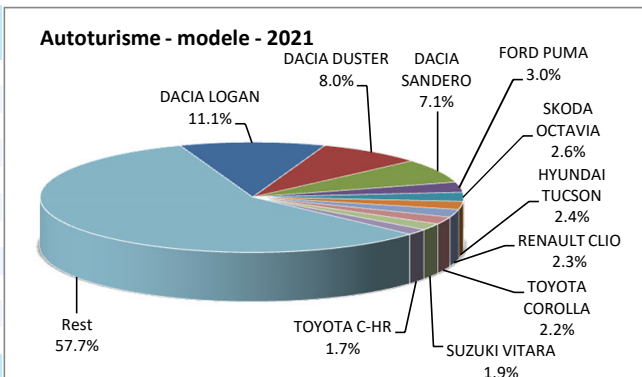
## Top inmatriculari autoturisme - marci / Passenger car top - by make

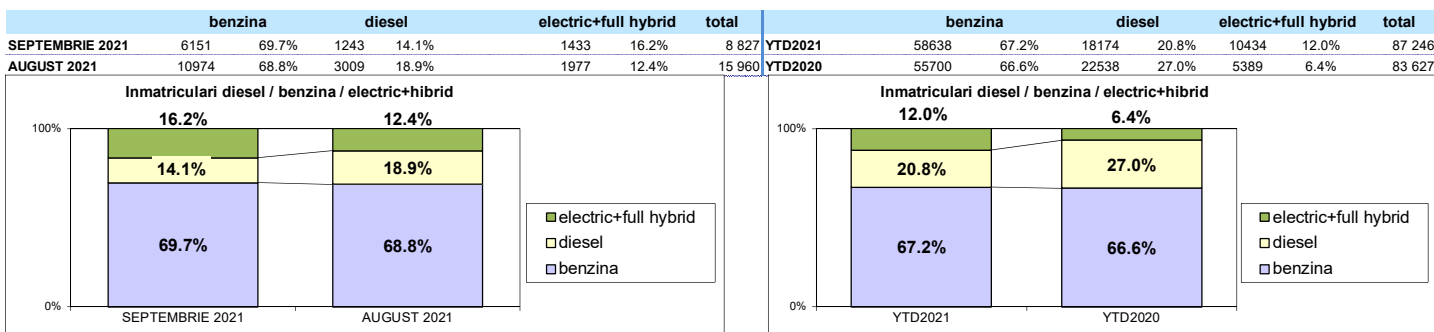
MARCA	Septembrie unitati	Var. luna sim. an anterior	2021 unitati	Var. an anterior
DACIA	2447	-28.9%	<b>23796</b>	-9.0%
TOYOTA	769	39.6%	<b>6542</b>	42.2%
HYUNDAI	894	75.3%	<b>6513</b>	27.2%
SKODA	456	-47.8%	<b>6489</b>	-1.9%
VOLKSWAGEN	582	-28.1%	<b>6139</b>	-6.5%
FORD	540	-18.1%	<b>5831</b>	32.7%
RENAULT	434	-51.0%	<b>5190</b>	-17.6%
SUZUKI	238	-32.4%	<b>3751</b>	44.5%
BMW	202	-6.0%	<b>2635</b>	25.3%
PEUGEOT	221	-2.6%	<b>2565</b>	2.5%
Rest	2044	-9.3%	<b>17795</b>	-
<b>TOTAL</b>	<b>8827</b>	<b>-18.1%</b>	<b>87246</b>	<b>4.3%</b>



## Top inmatriculari autoturisme - modele / Passenger car top - by model

MODEL	Septembrie unitati	Var. luna sim. an anterior	2021 unitati	Var. an anterior
DACIA LOGAN	1318	-29.7%	<b>9665</b>	-20.3%
DACIA DUSTER	447	-22.8%	<b>6995</b>	16.2%
DACIA SANDERO	628	-30.2%	<b>6169</b>	-4.7%
FORD PUMA	276	12.7%	<b>2613</b>	165.3%
SKODA OCTAVIA	142	-47.6%	<b>2291</b>	2.2%
HYUNDAI TUCSON	204	42.7%	<b>2064</b>	60.7%
RENAULT CLIO	246	-27.2%	<b>2027</b>	-26.2%
TOYOTA COROLLA	191	-1.5%	<b>1910</b>	65.8%
SUZUKI VITARA	112	-41.4%	<b>1684</b>	50.0%
TOYOTA C-HR	168	10.5%	<b>1488</b>	21.6%
Rest	5095	-13.5%	<b>50340</b>	-
<b>TOTAL</b>	<b>8827</b>	<b>-18.1%</b>	<b>87246</b>	<b>4.3%</b>





**Categoria Full Hybrid nu include si Mild Hybrid**

Inmatriculari autoturisme in functie de tipul de combustibil / Passenger car registrations by fuel type

Luna/An	2021				Pondere				Variatie 21/20			
	Diesel	Benzina	EV	HEV	Diesel	Benzina	EV	HEV	diesel	benzina	EV	HEV
Ianuarie	1 569	3 499	263	584	26.5%	59.2%	4.4%	9.9%	-52.6%	-58.3%	17.9%	30.1%
Februarie	1 757	4 236	262	560	25.8%	62.2%	3.8%	8.2%	-32.2%	-24.0%	101.5%	42.5%
Martie	2 101	4 826	249	578	27.1%	62.2%	3.2%	7.5%	-5.4%	20.9%	236.5%	136.9%
Aprilie	1 726	4 355	189	481	25.6%	64.5%	2.8%	7.1%	-5.9%	99.6%	173.9%	168.7%
Mai	2 085	5 207	231	590	25.7%	64.2%	2.8%	7.3%	6.6%	10.5%	143.2%	93.4%
Iunie	2 164	8 246	520	819	18.4%	70.2%	4.4%	7.0%	-5.3%	17.0%	89.1%	80.8%
Iulie	2 520	11 144	647	1 051	16.4%	72.5%	4.2%	6.8%	-22.8%	28.6%	50.8%	131.5%
August	3 009	10 974	797	1 180	18.9%	68.8%	5.0%	7.4%	8.0%	46.8%	155.4%	146.9%
Septembrie	1 243	6 151	607	826	14.1%	69.7%	6.9%	9.4%	-45.6%	-19.8%	71.0%	75.0%
Octombrie	-	-	-	-	-	-	-	-	-	-	-	-
Noiembrie	-	-	-	-	-	-	-	-	-	-	-	-
Decembrie	-	-	-	-	-	-	-	-	-	-	-	-
<b>Total</b>	<b>18 174</b>	<b>58 638</b>	<b>3 765</b>	<b>6 669</b>	<b>20.8%</b>	<b>67.2%</b>	<b>4.3%</b>	<b>7.6%</b>	<b>-45.9%</b>	<b>-29.0%</b>	<b>-3.0%</b>	<b>32.9%</b>

Categoria EV cuprinde atat autoturismele electrice 100% si pe cele Plug-in // Categoria HEV cuprinde doar autoturismele Full Hybrid

Top 10 Autoturisme in functie de tipul de alimentare - marci / Top 10 passenger car sales by fuel type and make

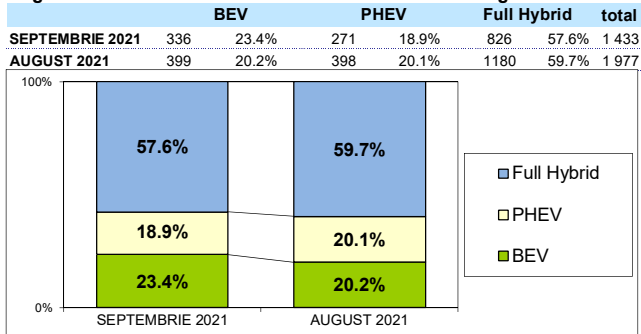
Top 10 diesel - marci

MARCA	Septembrie 2021	2021	Pondere %	Var. an anterior
DACIA	333	6075	33.4%	-56.0%
SKODA	106	2347	12.9%	-36.8%
VOLKSWAGEN	131	1522	8.4%	-57.1%
BMW	92	1513	8.3%	-7.9%
FORD	58	1123	6.2%	-43.5%
PEUGEOT	58	1090	6.0%	-45.2%
MERCEDES BENZ	73	1034	5.7%	-15.9%
AUDI	108	671	3.7%	0.3%
KIA	46	535	2.9%	83.8%
RENAULT	14	434	2.4%	-64.6%
Rest	224	1830	10.1%	-
<b>TOTAL</b>	<b>1243</b>	<b>18174</b>	<b>100.0%</b>	<b>-45.9%</b>

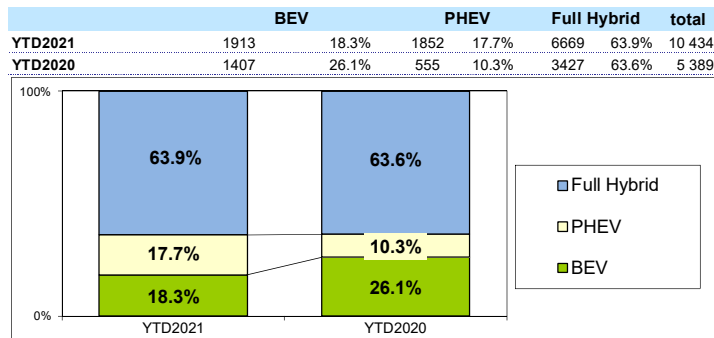
Top 10 benzina - marci

MARCA	Septembrie 2021	2021	Pondere %	Var. an anterior
DACIA	2114	17656	30.1%	-32.4%
HYUNDAI	702	5298	9.0%	-14.6%
FORD	419	4404	7.5%	-6.1%
RENAULT	375	4115	7.0%	-47.6%
SKODA	322	3983	6.8%	-35.2%
VOLKSWAGEN	328	3895	6.6%	-25.6%
SUZUKI	228	3705	6.3%	-6.1%
MAZDA	257	1903	3.2%	-6.0%
PEUGEOT	146	1353	2.3%	-5.5%
CITROEN	152	1348	2.3%	8.6%
Rest	1108	10978	18.7%	-
<b>TOTAL</b>	<b>6151</b>	<b>58638</b>	<b>100%</b>	<b>-29.0%</b>

Segmentare autoturisme electrificate / Electrified PC segmentation



**Categoria Full Hybrid nu include si Mild Hybrid**



Inmatriculari autoturisme electrificate pe marca / Electrified Passenger car registrations by make

Top Marci - Electrice

MARCA	2021	2020	Var. %
VOLKSWAGEN	609	198	207.6%
HYUNDAI	245	152	61.2%
RENAULT	189	343	-44.9%
PEUGEOT	106	55	92.7%
BMW	103	78	32.1%
SKODA	98	306	-68.0%
MERCEDES BENZ	83	26	219.2%
DACIA	65	0	-
MAZDA	60	0	-
MINI	56	6	833.3%
Altele	299	243	-
<b>TOTAL</b>	<b>1913</b>	<b>1407</b>	<b>36.0%</b>

Top Marci - Plug-in hibrid

MARCA	2021	2020	Var. %
MERCEDES BENZ	370	69	436.2%
BMW	245	92	166.3%
VOLVO	198	82	141.5%
RENAULT	195	0	-
HYUNDAI	185	34	444.1%
FORD	163	69	136.2%
VOLKSWAGEN	113	6	>900%
SKODA	61	23	165.2%
MITSUBISHI	55	61	-9.8%
AUDI	50	2	>900%
Altele	217	117	-
<b>TOTAL</b>	<b>1852</b>	<b>555</b>	<b>233.7%</b>

Top Marci - Full Hybrid

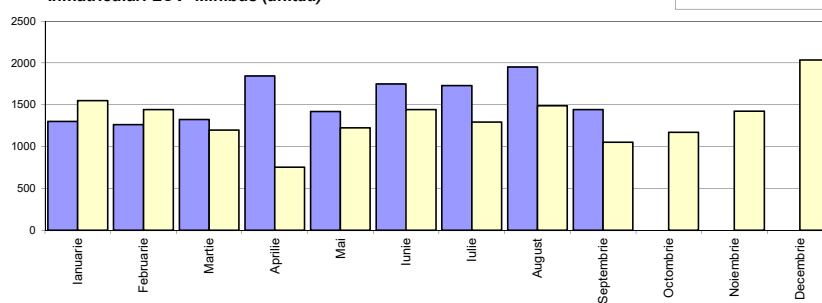
MARCA	2021	2020	Var. %
TOYOTA	5143	2949	74.4%
HYUNDAI	702	115	510.4%
RENAULT	257	0	-
HONDA	201	106	89.6%
LEXUS	141	139	1.4%
FORD	137	78	75.6%
SUZUKI	38	0	-
KIA	33	26	26.9%
SUBARU	17	14	21.4%
<b>TOTAL</b>	<b>6669</b>	<b>3427</b>	<b>94.6%</b>

## Inmatriculari comerciale usoare si minibus / LCV &amp; Minibus registrations

Luna/An	2021	2020	Variatie
Ianuarie	1 303	1 549	-15.9%
Februarie	1 265	1 442	-12.3%
Martie	1 325	1 199	10.5%
Aprilie	1 845	756	144.0%
Mai	1 420	1 227	15.7%
Iunie	1 749	1 445	21.0%
Iulie	1 730	1 293	33.8%
August	1 952	1 490	31.0%
Septembrie	1 444	1 054	37.0%
Octombrie		1 171	-
Noiembrie		1 424	-
Decembrie		2 036	-
<b>Total</b>	<b>14 033</b>	<b>11 455</b>	<b>22.5%</b>

16 086

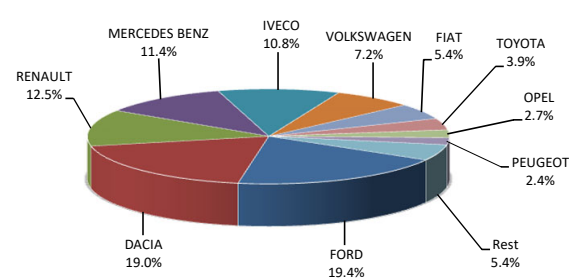
Inmatriculari LCV+Minibus (unitati)



## Inmatriculari comerciale &lt;3.5t si minibus - marci / LCV + minibus registrations by make

MARCA	Septembrie unitati	Var. luna sim. an anterior	2021 unitati	Var. an anterior
FORD	294	2.1%	2718	19.3%
DACIA	191	154.7%	2661	72.3%
RENAULT	193	107.5%	1748	44.1%
MERCEDES BENZ	168	37.7%	1594	13.5%
IVECO	173	55.9%	1520	48.9%
VOLKSWAGEN	75	-26.5%	1012	-12.0%
FIAT	93	47.6%	754	-8.6%
TOYOTA	60	81.8%	550	66.7%
OPEL	45	-59.5%	372	-53.7%
PEUGEOT	59	145.8%	341	-2.6%
Rest	93	190.6%	763	-
<b>TOTAL</b>	<b>1444</b>	<b>37.0%</b>	<b>14033</b>	<b>22.5%</b>

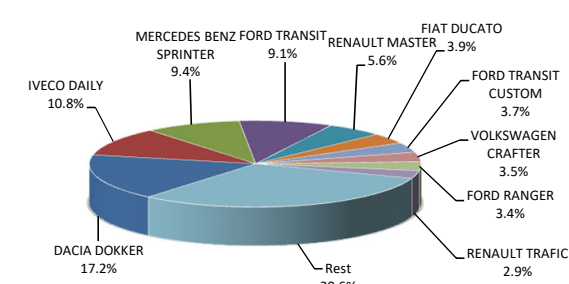
Inmatriculari LCV si minibus - marci - 2021



## Inmatriculari comerciale &lt;3.5t si minibus - modele / LCV + minibus registrations by models

MODEL	Septembrie unitati	Var. luna sim. an anterior	2021 unitati	Var. an anterior
DACIA DOKKER	188	157.5%	2409	62.7%
IVECO DAILY	169	53.6%	1511	48.4%
MERCEDES BENZ SPRINTER	137	44.2%	1313	24.8%
FORD TRANSIT	137	33.0%	1278	32.0%
RENAULT MASTER	57	-8.1%	779	-5.1%
FIAT DUCATO	78	66.0%	551	2.4%
FORD TRANSIT CUSTOM	73	49.0%	522	23.1%
VOLKSWAGEN CRAFTER	44	4.8%	497	14.3%
FORD RANGER	50	22.0%	471	18.0%
RENAULT TRAFIC	24	-4.0%	403	41.9%
Rest	487	19.7%	4299	-
<b>TOTAL</b>	<b>1444</b>	<b>37.0%</b>	<b>14033</b>	<b>22.5%</b>

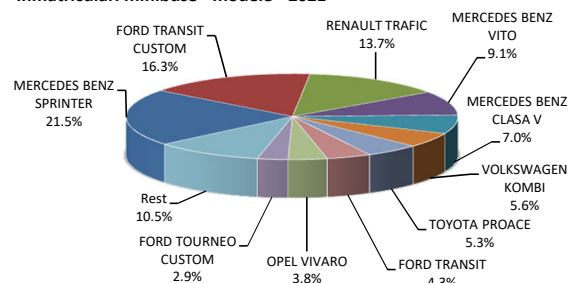
Inmatriculari LCV si minibus - modele - 2021



## Inmatriculari minibus - modele / Minibus registrations by models

MODEL	Septembrie unitati	Var. luna sim. an anterior	2021 unitati	Var. an anterior
MERCEDES BENZ SPRINTER	29	7.4%	284	-11.0%
FORD TRANSIT CUSTOM	30	11.1%	216	20.7%
RENAULT TRAFIC	12	-7.7%	181	-12.6%
MERCEDES BENZ VITO	21	61.5%	120	-5.5%
MERCEDES BENZ CLASA V	4	-42.9%	93	-3.1%
VOLKSWAGEN KOMBI	6	20.0%	74	-3.9%
TOYOTA PROACE	14	>900%	70	70.7%
FORD TRANSIT	2	-50.0%	57	54.1%
OPEL VIVARO	13	44.4%	50	-7.4%
FORD TOURNEO CUSTOM	3	0.0%	39	25.8%
Rest	12	-53.8%	139	-
<b>TOTAL</b>	<b>146</b>	<b>8.1%</b>	<b>1323</b>	<b>-1.9%</b>

Inmatriculari minibus - modele - 2021



## Inmatriculari pick-up - modele / Pick-up registrations by models

MODEL	Septembrie unitati	Var. luna sim. an anterior	2021 unitati	Var. an anterior
FORD RANGER	50	22.0%	471	18.0%
TOYOTA HILUX	30	36.4%	374	66.2%
DACIA DUSTER	0	-	186	>900%
NISSAN NAVARA	11	120.0%	138	-2.1%
MITSUBISHI L200	19	533.3%	110	-9.8%
ISUZU D-MAX	10	-	75	17.2%
SSANGYONG MUSSO GRAND	0	-	12	300.0%
VOLKSWAGEN AMAROK	1	-80.0%	8	-85.5%
FORD F150	1	-	3	-
DODGE RAM	0	-	2	100.0%
Rest	1	-50.0%	5	-
<b>TOTAL</b>	<b>123</b>	<b>57.7%</b>	<b>1384</b>	<b>28.5%</b>

Inmatriculari pick-up - modele - 2021

