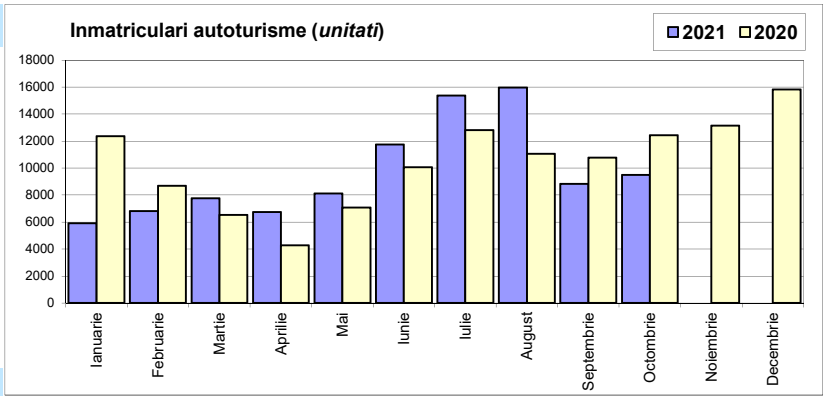


**Inmatriculari autoturisme / Passenger car registrations**

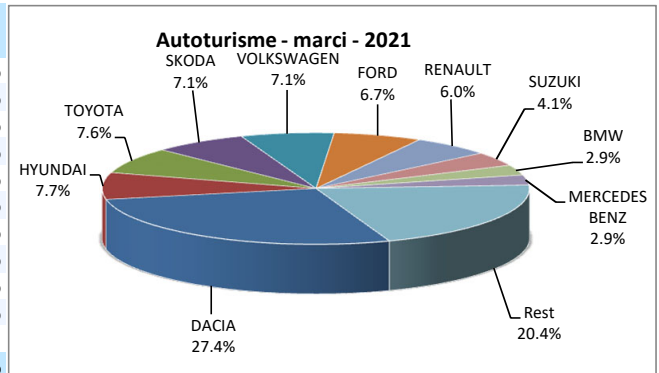
Luna/An	2021	2020	Variatie
Ianuarie	5 915	12 368	-52.2%
Februarie	6 815	8 688	-21.6%
Martie	7 754	6 532	18.7%
Aprilie	6 751	4 265	58.3%
Mai	8 113	7 067	14.8%
Iunie	11 749	10 060	16.8%
Iulie	15 362	12 815	19.9%
August	15 960	11 055	44.4%
Septembrie	8 827	10 777	-18.1%
Octombrie	9 496	12 421	-23.5%
Noiembrie	-	13 144	-
Decembrie	-	15 814	-
<b>Total</b>	<b>96 742</b>	<b>96 048</b>	<b>0.7%</b>

125 006



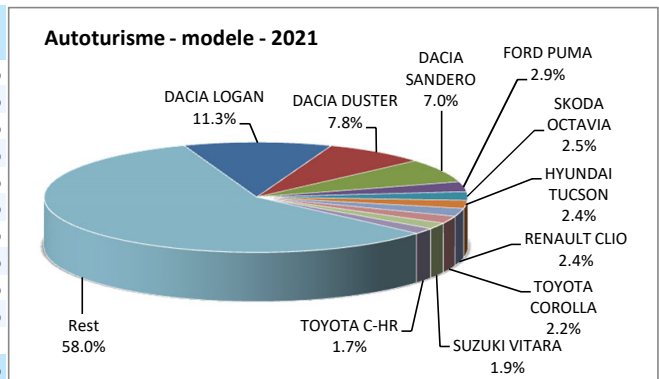
**Top inmatriculari autoturisme - marci / Passenger car top - by make**

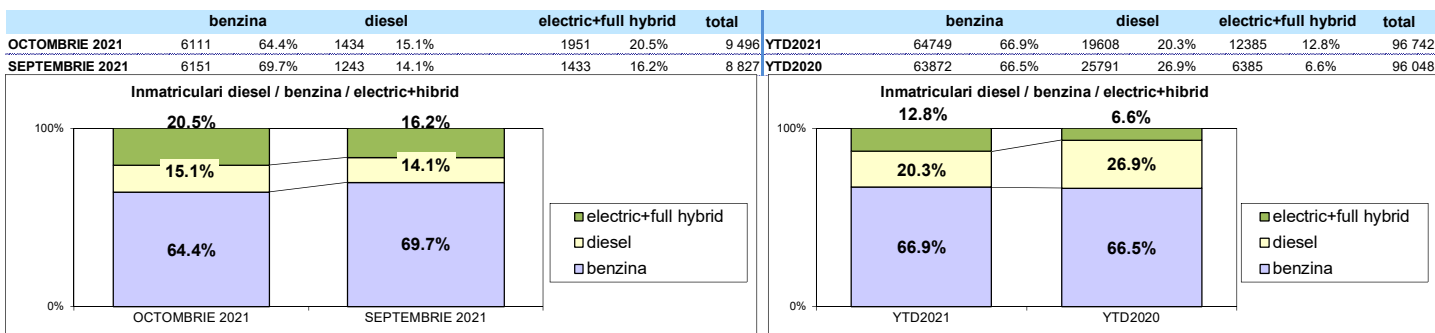
MARCA	Octombrie unitati	Var. luna sim. an anterior	2021 unitati	Var. an anterior
DACIA	2715	-32.9%	26511	-12.2%
HYUNDAI	965	55.9%	7478	30.3%
TOYOTA	799	29.5%	7341	40.7%
SKODA	418	-54.2%	6907	-8.2%
VOLKSWAGEN	683	-20.1%	6822	-8.1%
FORD	642	-7.8%	6473	27.1%
RENAULT	662	-38.0%	5852	-20.6%
SUZUKI	196	-55.9%	3947	29.9%
BMW	209	-24.5%	2844	19.5%
MERCEDES BENZ	307	34.1%	2836	14.7%
Rest	1900	-28.5%	19731	-
<b>TOTAL</b>	<b>9496</b>	<b>-23.5%</b>	<b>96742</b>	<b>0.7%</b>



**Top inmatriculari autoturisme - modele / Passenger car top - by model**

MODEL	Octombrie unitati	Var. luna sim. an anterior	2021 unitati	Var. an anterior
DACIA LOGAN	1243	-35.6%	10908	-22.4%
DACIA DUSTER	527	-49.7%	7522	6.4%
DACIA SANDERO	621	-34.2%	6790	-8.5%
FORD PUMA	211	-15.9%	2824	128.5%
SKODA OCTAVIA	134	-63.6%	2425	-7.1%
HYUNDAI TUCSON	224	29.5%	2288	57.0%
RENAULT CLIO	259	-33.1%	2286	-27.1%
TOYOTA COROLLA	189	-2.6%	2099	55.9%
SUZUKI VITARA	106	-54.5%	1790	32.0%
TOYOTA C-HR	191	13.7%	1679	20.6%
Rest	5791	-13.9%	56131	-
<b>TOTAL</b>	<b>9496</b>	<b>-23.5%</b>	<b>96742</b>	<b>0.7%</b>





**Categoria Full Hybrid nu include si Mild Hybrid**

Inmatriculari autoturisme in functie de tipul de combustibil / Passenger car registrations by fuel type

Luna/An	2021				Pondere				Variatie 21/20			
	Diesel	Benzina	EV	HEV	Diesel	Benzina	EV	HEV	diesel	benzina	EV	HEV
Ianuarie	1 569	3 499	263	584	26.5%	59.2%	4.4%	9.9%	-52.6%	-58.3%	17.9%	30.1%
Februarie	1 757	4 236	262	560	25.8%	62.2%	3.8%	8.2%	-32.2%	-24.0%	101.5%	42.5%
Martie	2 101	4 826	249	578	27.1%	62.2%	3.2%	7.5%	-5.4%	20.9%	236.5%	136.9%
Aprilie	1 726	4 355	189	481	25.6%	64.5%	2.8%	7.1%	-5.9%	99.6%	173.9%	168.7%
Mai	2 085	5 207	231	590	25.7%	64.2%	2.8%	7.3%	6.6%	10.5%	143.2%	93.4%
Iunie	2 164	8 246	520	819	18.4%	70.2%	4.4%	7.0%	-5.3%	17.0%	89.1%	80.8%
Iulie	2 520	11 144	647	1 051	16.4%	72.5%	4.2%	6.8%	-22.8%	28.6%	50.8%	131.5%
August	3 009	10 974	797	1 180	18.9%	68.8%	5.0%	7.4%	8.0%	46.8%	155.4%	146.9%
Septembrie	1 243	6 151	607	826	14.1%	69.7%	6.9%	9.4%	-45.6%	-19.8%	71.0%	75.0%
Octombrie	1 434	6 111	1 054	897	15.1%	64.4%	11.1%	9.4%	-55.9%	-25.2%	122.8%	71.5%
Noiembrie	-	-	-	-	-	-	-	-	-	-	-	-
Decembrie	-	-	-	-	-	-	-	-	-	-	-	-
<b>Total</b>	<b>19 608</b>	<b>64 749</b>	<b>4 819</b>	<b>7 566</b>	<b>20.3%</b>	<b>66.9%</b>	<b>5.0%</b>	<b>7.8%</b>	<b>-24.0%</b>	<b>1.4%</b>	<b>97.9%</b>	<b>91.5%</b>

*Categoria EV cuprinde atat autoturismele electrice 100% si pe cele Plug-in // Categoria HEV cuprinde doar autoturismele Full Hybrid*

Top 10 Autoturisme in functie de tipul de alimentare - marci / Top 10 passenger car sales by fuel type and make

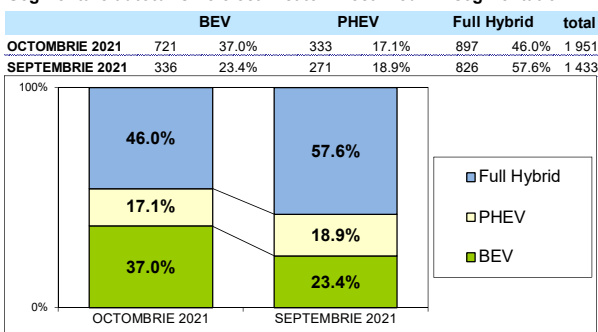
Top 10 diesel - marci

MARCA	Octombrie 2021	2021	Pondere %	Var. an anterior
DACIA	403	6478	33.0%	-36.3%
SKODA	94	2441	12.4%	-9.9%
VOLKSWAGEN	235	1757	9.0%	-38.0%
BMW	87	1600	8.2%	18.1%
FORD	100	1223	6.2%	-21.7%
PEUGEOT	94	1184	6.0%	-27.7%
MERCEDES BENZ	108	1142	5.8%	12.3%
AUDI	79	750	3.8%	43.1%
KIA	73	608	3.1%	146.2%
RENAULT	39	473	2.4%	-47.3%
Rest	122	1952	10.0%	-
<b>TOTAL</b>	<b>1434</b>	<b>19608</b>	<b>100.0%</b>	<b>-24.0%</b>

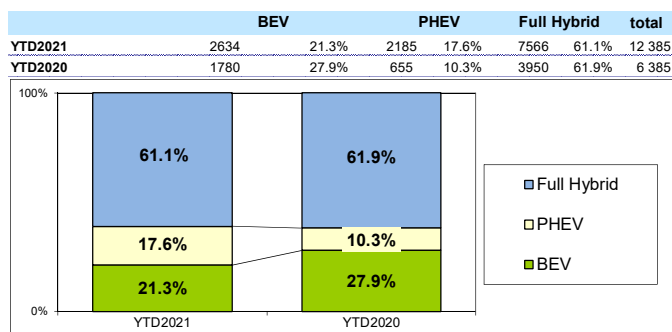
Top 10 benzina - marci

MARCA	Octombrie 2021	2021	Pondere %	Var. an anterior
DACIA	2035	19691	30.4%	-1.7%
HYUNDAI	745	6043	9.3%	16.5%
FORD	464	4868	7.5%	45.1%
RENAULT	543	4658	7.2%	-22.3%
SKODA	282	4265	6.6%	-4.3%
VOLKSWAGEN	292	4187	6.5%	-2.8%
SUZUKI	185	3890	6.0%	28.0%
MAZDA	197	2100	3.2%	24.3%
KIA	193	1540	2.4%	6.1%
PEUGEOT	147	1500	2.3%	49.6%
Rest	1028	12007	18.5%	-
<b>TOTAL</b>	<b>6111</b>	<b>64749</b>	<b>100%</b>	<b>1.4%</b>

Segmentare autoturisme electrificate / Electrified PC segmentation



**Categoria Full Hybrid nu include si Mild Hybrid**



Inmatriculari autoturisme electrificate pe marca / Electrified Passenger car registrations by make

Top Marci - Electrice

MARCA	2021	2020	Var. %
VOLKSWAGEN	749	274	173.4%
DACIA	342	0	-
HYUNDAI	307	191	60.7%
RENAULT	232	475	-51.2%
SKODA	123	331	-62.8%
PEUGEOT	118	67	76.1%
BMW	115	89	29.2%
MERCEDES BENZ	99	36	175.0%
TESLA	87	51	70.6%
MAZDA	64	6	>900%
Altele	398	260	-
<b>TOTAL</b>	<b>2634</b>	<b>1780</b>	<b>48.0%</b>

Top Marci - Plug-in hybrid

MARCA	2021	2020	Var. %
MERCEDES BENZ	441	88	401.1%
BMW	287	98	192.9%
HYUNDAI	246	43	472.1%
VOLVO	222	94	136.2%
FORD	203	80	153.8%
RENAULT	203	0	-
VOLKSWAGEN	129	9	>900%
SKODA	78	34	129.4%
MITSUBISHI	63	75	-16.0%
AUDI	60	4	>900%
Altele	253	130	-
<b>TOTAL</b>	<b>2185</b>	<b>655</b>	<b>233.6%</b>

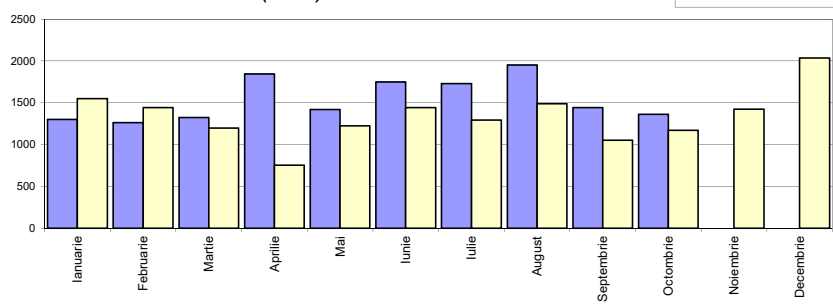
Top Marci - Full Hybrid

MARCA	2021	2020	Var. %
TOYOTA	5814	3387	71.7%
HYUNDAI	797	140	469.3%
RENAULT	286	0	-
HONDA	238	127	87.4%
FORD	169	93	81.7%
LEXUS	165	157	5.1%
SUZUKI	45	0	-
KIA	34	30	13.3%
SUBARU	18	16	12.5%
<b>TOTAL</b>	<b>7566</b>	<b>3950</b>	<b>91.5%</b>

## Inmatriculari comerciale usoare si minibus / LCV &amp; Minibus registrations

Luna/An	2021	2020	Variatie
Ianuarie	1 303	1 549	-15.9%
Februarie	1 265	1 442	-12.3%
Martie	1 325	1 199	10.5%
Aprilie	1 845	756	144.0%
Mai	1 420	1 227	15.7%
Iunie	1 749	1 445	21.0%
Iulie	1 730	1 293	33.8%
August	1 952	1 490	31.0%
Septembrie	1 444	1 054	37.0%
Octombrie	1 362	1 171	16.3%
Noiembrie		1 424	-
Decembrie		2 036	-
<b>Total</b>	<b>15 395</b>	<b>12 626</b>	<b>21.9%</b>

Inmatriculari LCV+Minibus (unitati)

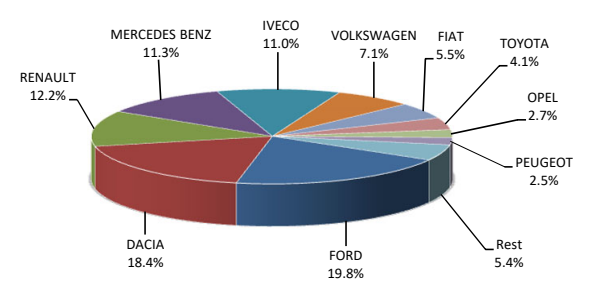


16 086

## Inmatriculari comerciale &lt;3.5t si minibus - marci / LCV + minibus registrations by make

MARCA	Octombrie unitati	Var. luna sim. an anterior	2021 unitati	Var. an anterior
FORD	337	52.5%	3055	22.2%
DACIA	173	133.8%	2834	75.2%
RENAULT	127	-3.8%	1875	39.4%
MERCEDES BENZ	142	-24.5%	1736	9.0%
IVECO	178	60.4%	1698	50.0%
VOLKSWAGEN	77	-23.0%	1089	-12.9%
FIAT	92	50.8%	846	-4.5%
TOYOTA	83	48.2%	633	64.0%
OPEL	39	-68.3%	411	-55.6%
PEUGEOT	41	-40.6%	382	-8.8%
Rest	73	102.8%	836	-
<b>TOTAL</b>	<b>1362</b>	<b>16.3%</b>	<b>15395</b>	<b>21.9%</b>

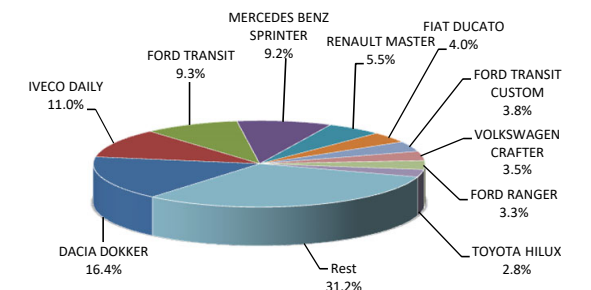
Inmatriculari LCV si minibus - marci - 2021



## Inmatriculari comerciale &lt;3.5t si minibus - modele / LCV + minibus registrations by models

MODEL	Octombrie unitati	Var. luna sim. an anterior	2021 unitati	Var. an anterior
DACIA DOKKER	122	79.4%	2531	63.4%
IVECO DAILY	177	60.9%	1688	49.6%
FORD TRANSIT	152	55.1%	1430	34.1%
MERCEDES BENZ SPRINTER	106	-35.4%	1419	16.7%
RENAULT MASTER	62	-16.2%	841	-6.0%
FIAT DUCATO	72	44.0%	623	6.0%
FORD TRANSIT CUSTOM	66	78.4%	588	27.5%
VOLKSWAGEN CRAFTER	38	2.7%	535	13.3%
FORD RANGER	44	63.0%	515	20.9%
TOYOTA HILUX	55	27.9%	429	60.1%
Rest	468	1.1%	4796	-
<b>TOTAL</b>	<b>1362</b>	<b>16.3%</b>	<b>15395</b>	<b>21.9%</b>

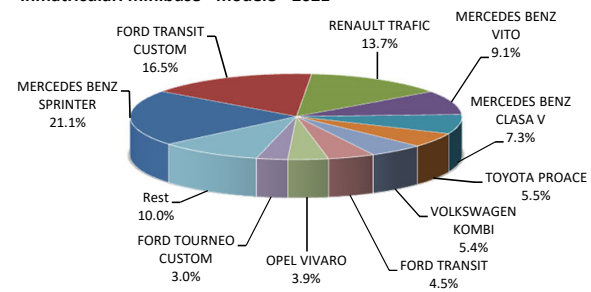
Inmatriculari LCV si minibus - modele - 2021



## Inmatriculari minibus - modele / Minibus registrations by models

MODEL	Octombrie unitati	Var. luna sim. an anterior	2021 unitati	Var. an anterior
MERCEDES BENZ SPRINTER	23	-36.1%	307	-13.5%
FORD TRANSIT CUSTOM	24	14.3%	240	20.0%
RENAULT TRAFIC	18	28.6%	199	-10.0%
MERCEDES BENZ VITO	13	18.2%	133	-3.6%
MERCEDES BENZ CLASA V	13	0.0%	106	-2.8%
TOYOTA PROACE	10	100.0%	80	73.9%
VOLKSWAGEN KOMBI	4	-69.2%	78	-13.3%
FORD TRANSIT	9	125.0%	66	61.0%
OPEL VIVARO	7	250.0%	57	1.8%
FORD TOURNEO CUSTOM	5	150.0%	44	33.3%
Rest	7	-46.2%	146	-
<b>TOTAL</b>	<b>133</b>	<b>-0.7%</b>	<b>1456</b>	<b>-1.8%</b>

Inmatriculari minibus - modele - 2021



## Inmatriculari pick-up - modele / Pick-up registrations by models

MODEL	Octombrie unitati	Var. luna sim. an anterior	2021 unitati	Var. an anterior
FORD RANGER	44	63.0%	515	20.9%
TOYOTA HILUX	55	27.9%	429	60.1%
DACIA DUSTER	0	-	186	>900%
NISSAN NAVARA	0	-100.0%	138	-2.8%
MITSUBISHI L200	12	140.0%	122	-3.9%
ISUZU D-MAX	4	300.0%	79	21.5%
SSANGYONG MUSSO GRAND	0	-	12	300.0%
VOLKSWAGEN AMAROK	0	-100.0%	8	-86.2%
FORD F150	0	-	3	-
JEEP GLADIATOR	2	-	3	-
Rest	0	-	6	-
<b>TOTAL</b>	<b>117</b>	<b>46.3%</b>	<b>1501</b>	<b>29.7%</b>

Inmatriculari pick-up - modele - 2021

